

18 March 2008

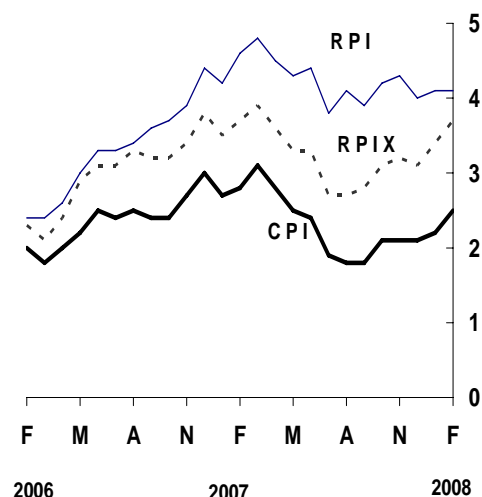
Coverage
United Kingdom
Theme
The Economy

Consumer price indices February 2008

In the year to February, the consumer prices index (CPI) rose by 2.5 per cent, up from 2.2 per cent in January.

In the year to February, the all items retail prices index (RPI) rose by 4.1 per cent, unchanged from January.

Over the same period, the all items RPI excluding mortgage interest payments index (RPIX) rose by 3.7 per cent, up from 3.4 per cent in January.



Issued by
National Statistics
1 Drummond Gate
London SW1V 2QQ

Telephone
Press Office 020 7533 5725
Public Enquiries 0845 601 3034
CPI/RPI Enquiries 01633 456900
CPI/RPI recorded
message 01633 456961
E-mail cpi@ons.gov.uk

Statistician
Philip Gooding 01633 455896
philip.gooding@ons.gov.uk

Internet
www.statistics.gov.uk

Next publication date
15 April 2008

		Consumer prices index (CPI)		All items retail prices index (RPI)		All items RPI excluding mortgage interest payments (RPIX)	
		Index (2005 =100)	Per cent change over 12 months	Index (Jan 1987 =100)	Per cent change over 12 months	Index (Jan 1987 =100)	Per cent change over 12 months
2007	Sept	104.8	1.8	208.0	3.9	200.8	2.8
	Oct	105.3	2.1	208.9	4.2	201.6	3.1
	Nov	105.6	2.1	209.7	4.3	202.4	3.2
	Dec	106.2	2.1	210.9	4.0	203.5	3.1
2008	Jan	105.5	2.2	209.8	4.1	202.7	3.4
	Feb	106.3	2.5	211.4	4.1	204.3	3.7

Main contributions to the change in the 12-month rate¹

CPI

The largest upward contribution to the change in the CPI annual rate came from housing and household services. This was due to gas and electricity bills rising by more than a year ago. Part of the effect from these items comes from a change in the methodology used to compile the index: previously gas and electricity price changes were phased in over a four month period to reflect the fact that the tariff rate did not change for customers until the day the meter was read; tariff increases are now implemented at the time the change is made. The effect is that the price rises announced over recent months are included in the February index whereas previously only a part of these would have been included.

A small upward effect came from alcoholic beverages and tobacco. The largest contribution within the division came from cigarettes where prices rose by more than a year ago.

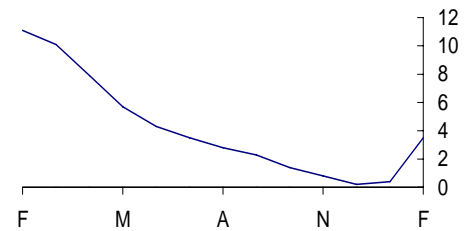
There was also a small upward effect from recreation and culture. Within this division, a large upward contribution from audio-visual equipment and accessories, principally from recording media such as pre-recorded DVDs, was partially offset by small downward contributions from games, toys and hobbies, and cultural services.

The largest downward contribution to the change in the CPI annual rate came from food and non-alcoholic beverages, mainly due to downward contributions from fruit and vegetables. Fruit prices fell compared with a rise a year ago, with the largest individual contribution coming from strawberries. Vegetable prices rose by less than a year ago. A small partially offsetting upward effect came from milk, cheese and eggs.

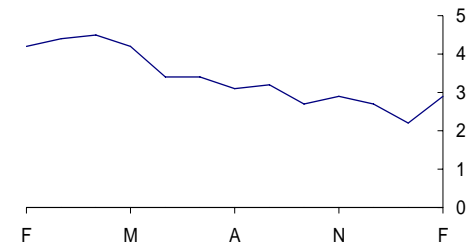
Small downward contributions came from:

- miscellaneous goods and services, where prices rose by less than a year ago with the main downward effects coming from personal care appliances and products, principally small electrical appliances and paper products
- transport where the price of passenger air and sea fares rose by less than a year ago. A partially offsetting upward effect within the division came from fuels and lubricants where the average price of petrol rose by 0.1p between January and February this year, to stand at 104.0p per litre, compared with a fall of 0.3p a year ago, and
- communication where landline telephone charges fell this year but were unchanged a year ago

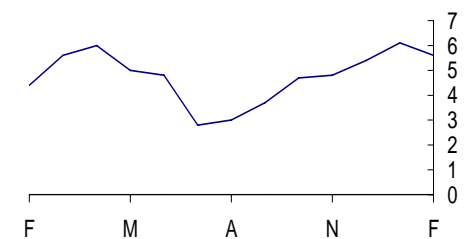
Housing and household services
CPI percentage changes over 12 months



Alcoholic beverages and tobacco
CPI percentage changes over 12 months



Food and non-alcoholic beverages
CPI percentage changes over 12 months



¹ The CPI and RPI use different classification systems. Background Note 14 shows how, for each of the two indices, the main categories contributing to changes in the 12-month rate relate to each other

RPI

The largest upward contribution to change in the RPI annual rate came from fuel and light. As in the CPI, the effect came from gas and electricity bills which rose more this year than a year ago. Again part of the effect comes from the change in the methodology used to compile the index.

There were small upward contributions from:

- leisure goods where the price of CDs and tapes rose this year but fell a year ago, the principal effect coming from pre-recorded DVDs, and
- tobacco where cigarette prices rose by more than a year ago

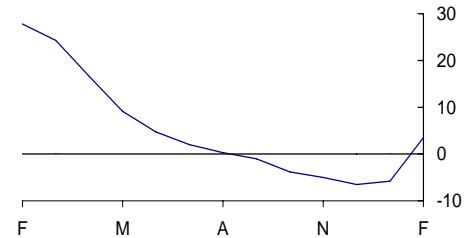
The largest downward contribution to change in the RPI annual rate came from housing. The effect came mainly from mortgage interest payments where there was a smaller increase than last year. There was also a large downward effect from house depreciation.

There was a further large downward contribution from food, particularly from fresh fruit, fresh vegetables other than potatoes and fresh fish. For each of these sections, prices fell this year but rose a year ago. Partially offsetting upward effects came from beef and cheese where prices rose compared with falls last year.

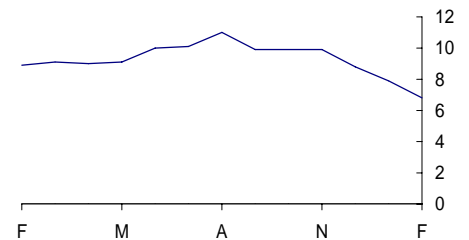
There were small downward contributions from:

- fares and other travel, and
- household services, where average prices fell by more than a year ago. Within this group, the main effects came from landline telephone charges and estate agent fees partially offset by increases from mobile phone charges

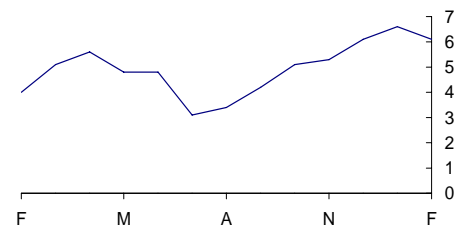
Fuel and light
RPI percentage changes over 12 months



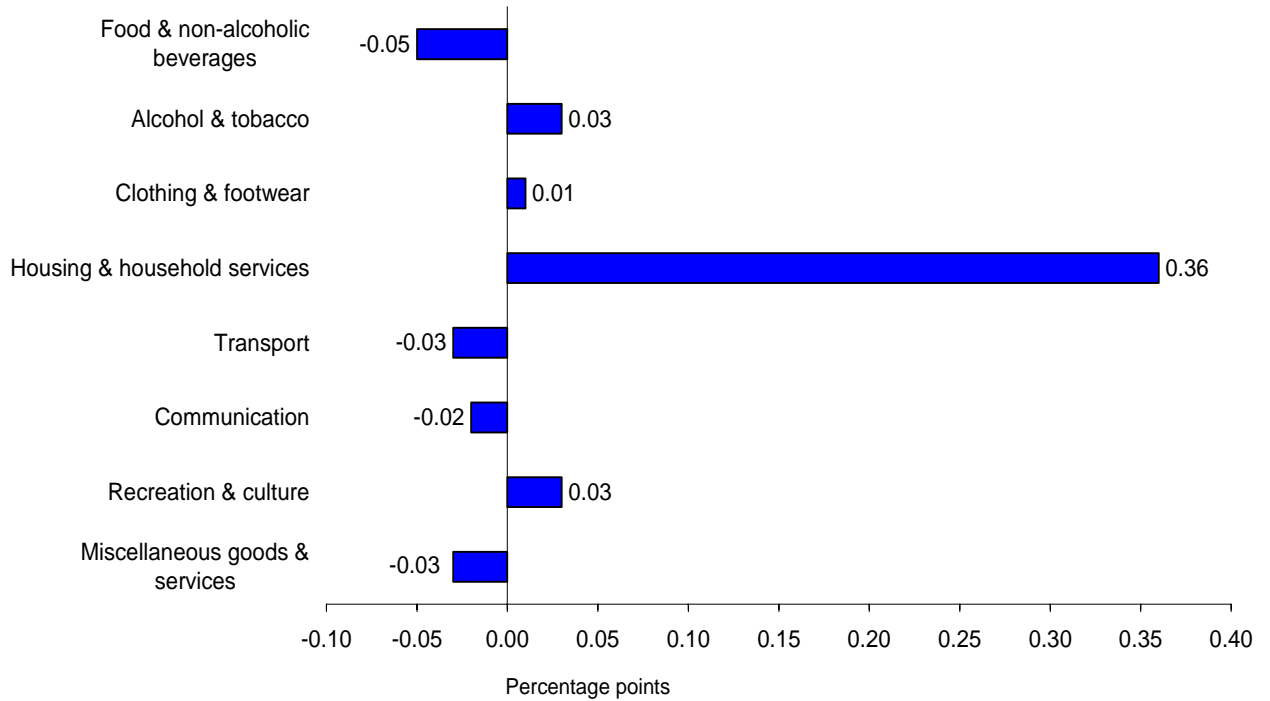
Housing
RPI percentage changes over 12 months



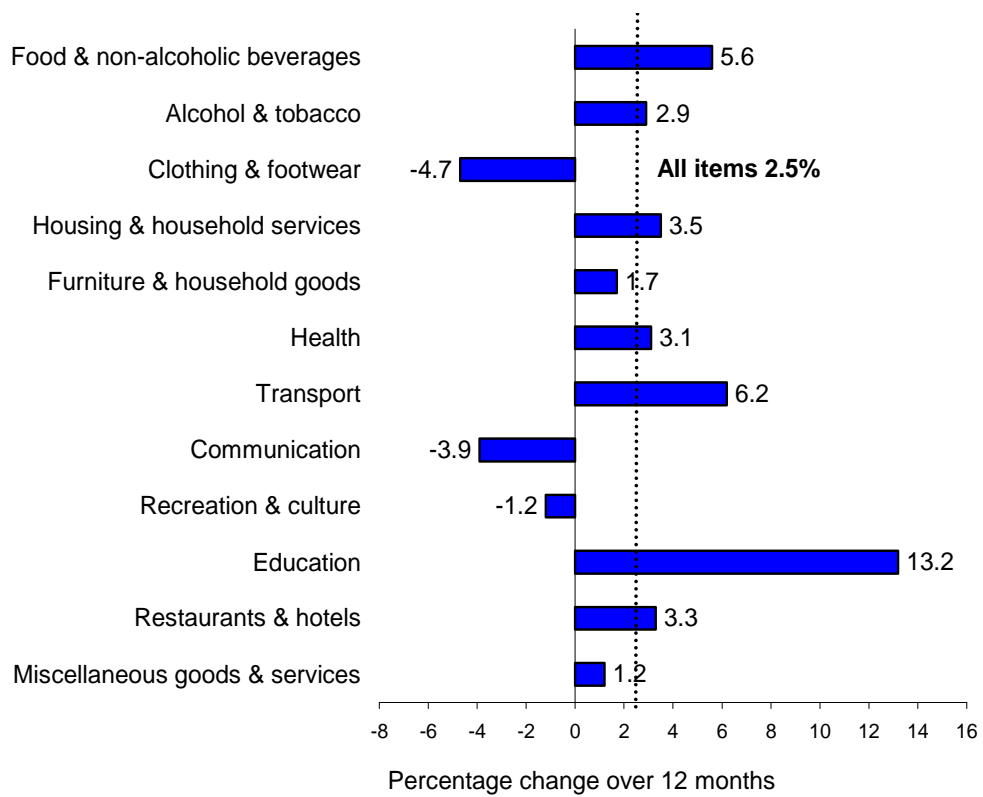
Food
RPI percentage changes over 12 months



CPI main contributions¹ to the change in the all items 12-month rate between January 2008 and February 2008 (0.3 percentage points)

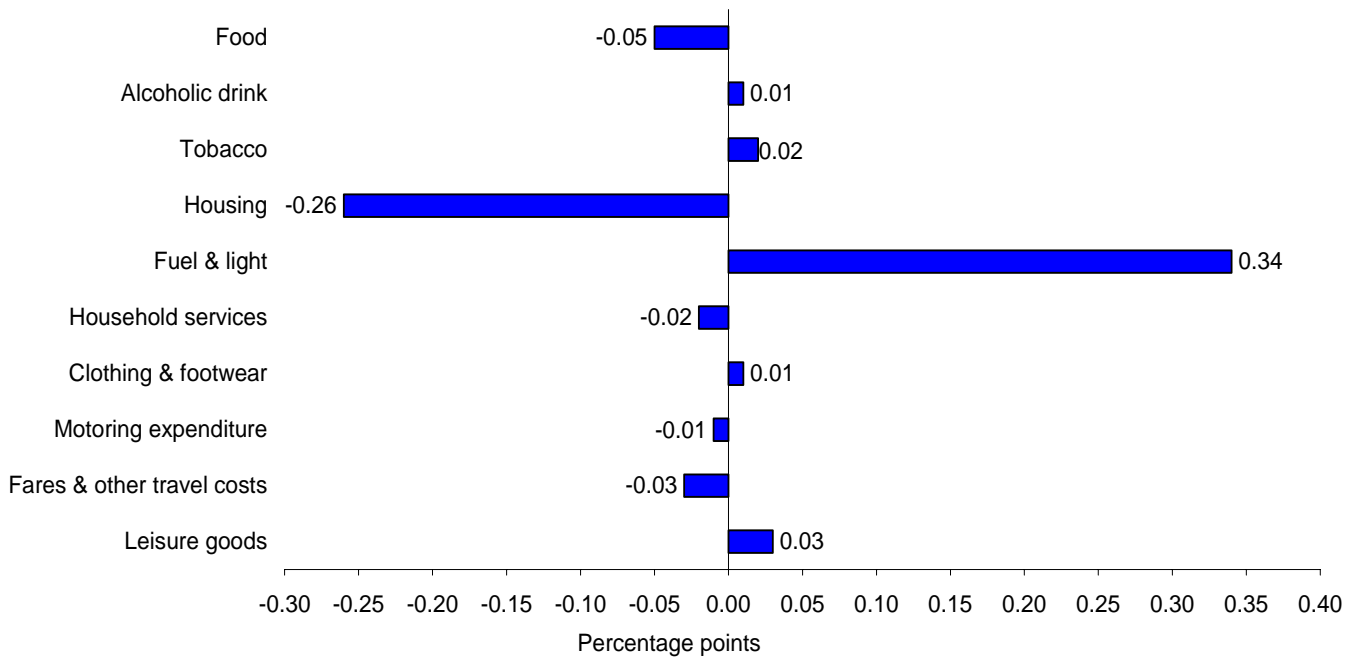


CPI comparison of the 12-month percentage changes

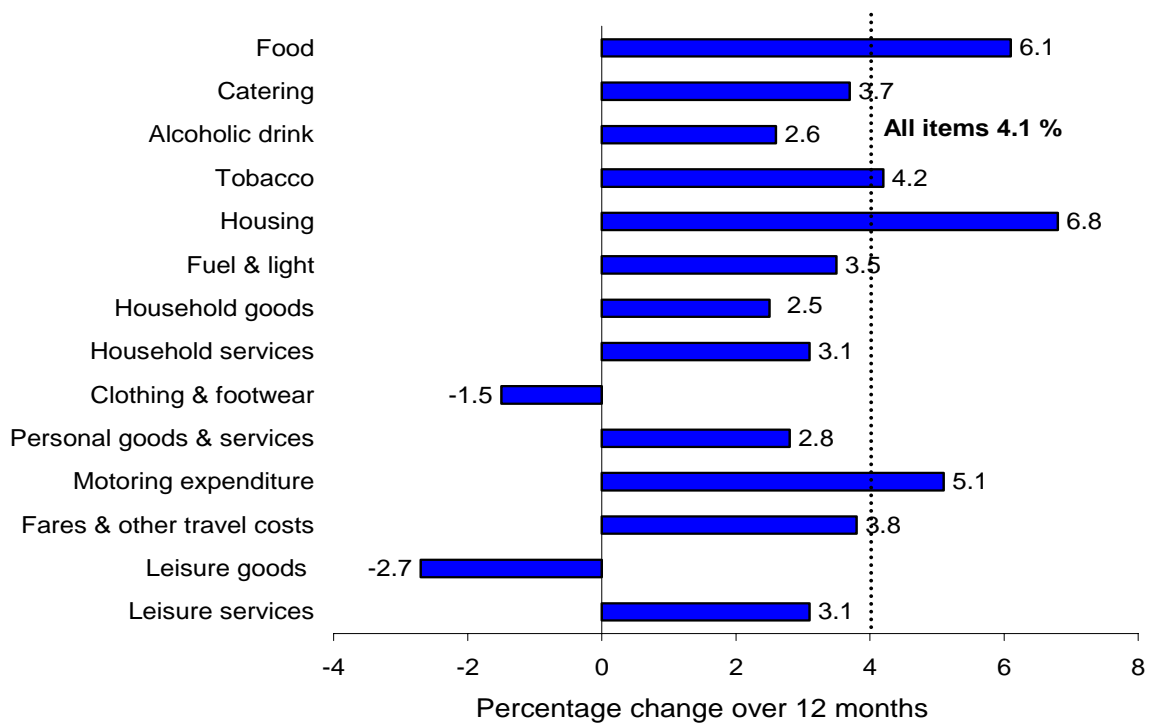


¹ Individual contributions to the change in the 12-month rate may not sum to the total due to rounding

RPI main contributions¹ to change in the all items 12-month rate between January 2008 and February 2008 (unchanged)



RPI comparison of 12-month percentage changes



¹ Individual contributions to the change in the 12-month rate may not sum to the total due to rounding.

BACKGROUND NOTES

New this month

- 1 In line with usual practice, the February 2008 indices include updates to the published RPI weights, and updates to the unpublished CPI and RPI item weights.
- 2 The basket of goods and services that are priced to compile the CPI and RPI is reviewed annually. Changes to the basket this year, effective from the February indices, were described in an article published on the National Statistics website on Monday 17 March.
- 3 Two changes have been introduced with the February index. These relate to the measurement of gas and electricity and fresh fruit and vegetables prices.

Previously gas and electricity price changes were phased in over a four month period to reflect the fact that the tariff rate did not change for a customer until the day the meter was read (or the bill was estimated). It is clear that tariff increases are now implemented at the time the change is made, regardless of when the meter is read. As a result, the phasing in of price changes has now ceased. Any residual phasing effects from tariff changes which had not fed through completely have also been introduced in full in the February index.

The item weights for fresh fruit and vegetables including potatoes have previously varied throughout the year to reflect differing spending patterns. However the higher level section weights have been fixed so that the principle of the fixed basket of goods is maintained. From the February index, the seasonal weights have been replaced by annual weights. The change reflects the fact that most types of fruit and vegetable are available in shops all year round.

Relevance

- 4 The consumer prices index (CPI) is the main United Kingdom domestic measure of consumer price inflation for macroeconomic purposes. It forms the basis for the Government's inflation target that the Bank of England's Monetary Policy Committee (MPC) is required to achieve.
- 5 Internationally, the CPI is known as the Harmonised Index of Consumer Prices (HICP). HICPs are calculated in each Member State of the European Union, according to rules specified in a series of European Regulations developed by Eurostat in conjunction with the EU Member States. HICPs are used to compare inflation rates across the European Union. Since January 1999 it has also been used by the European Central Bank (ECB) as the measure of price stability across the euro area.
- 6 The retail prices index (RPI) is the most long-standing general purpose measure of inflation in the United Kingdom and is available from June 1947. It is used for a variety of purposes by both government and external users including the indexation of various incomes and prices and the uprating of pensions, benefits and index-linked gilts.

Methodology

- 7 The CPI and the RPI are compiled using the same underlying price data, based on a large and representative selection of around 650 individual goods and services for which price movements are measured in around 150 randomly selected areas throughout the UK. Around 120,000 separate price quotations are used every month to compile the indices. The outlets in which the prices are collected are selected randomly. Expenditure weights are held constant for one year at a time.
- 8 The selection of goods and services that are priced to compile the CPI and RPI is reviewed annually. The contents of the 2008 basket are described in an article published on the National Statistics website at:
<http://www.statistics.gov.uk/cci/article.asp?ID=1951>
The expenditure weights used to compile the indices are also updated each year. Additional details of the updated CPI and RPI weights for 2007 are available from the National Statistics website in an article entitled Consumer Prices Index and Retail Prices Index: Updating Weights for 2007:
<http://www.statistics.gov.uk/cci/article.asp?id=1779>
- 9 Rates of change for the CPI are calculated from unrounded index levels, rather than on the published indices, which are rounded to one decimal place. The use of unrounded indices increases the accuracy of the calculation. The unrounded index levels are available on request. By contrast, rates of change for the RPI are calculated from the published rounded indices.

Reliability

- 10 Once the RPI indices are published they are never revised. CPI indices are revisable although past revisions have been minimal with the exception of those arising from re-referencing of the CPI to 2005=100, which took place with the publication of the January 2006 indices.

Comparability

- 11 The CPI's coverage of goods and services was extended in stages in the areas of health, education, childcare and insurance, with effect from the January 2000, 2001, and 2002 indices. In 2000, there was also a change to the population basis for the weights which was broadened from private households to include expenditure by foreign visitors and residents of institutional households. Further details can be found in a series of articles:
http://www.statistics.gov.uk/about/methodology_by_theme/cpi
- 12 The official CPI series starts in 1996 but estimates for earlier periods are available back to 1988. These estimates are broadly consistent with data from 1996 but should be treated with some caution. The following article provides more detail:
<http://www.statistics.gov.uk/cci/article.asp?ID=31&Pos=4&ColRank=1&Rank=1>
- 13 RPI data are available back to 1947 but have been re-referenced on several occasions since then, generally accompanied by changes to the coverage and/or structure of the detailed sub-components. Details of these changes are given in Appendices 1 and 2 of the CPI Technical Manual:
<http://www.statistics.gov.uk/statbase/Product.asp?vlnk=2328&More=N>

Coherence

14 The CPI and RPI both measure the average change from month to month in the prices of consumer goods and services purchased in the UK. However, they differ in both coverage and methodology. A detailed description of these differences is given in an article entitled "The New Inflation Target: the Statistical Perspective":

www.statistics.gov.uk/StatBase/Product.asp?vlnk=10913. The differences are summarised below:

- In the CPI, the geometric mean is used to combine the individual prices into elementary indices at the most basic level whereas the RPI uses arithmetic means
- The CPI excludes a number of RPI series mainly relating to housing costs (for example, council tax), and in particular to owner occupiers' housing costs (including mortgage interest payments, house depreciation and buildings insurance). In addition, the CPI excludes the annual road fund licence and, from 2006, TV licences which are classified as taxes in the UK National Accounts, and Trades Union subscriptions which by convention are not part of household expenditure
- The CPI includes series for university accommodation fees, foreign students' university tuition fees, and unit trust and stockbrokers' charges, none of which are included in the RPI
- The CPI is categorised according to the international classification system, COICOP (Classification Of Individual CONsumption by Purpose). The way in which this maps to the RPI groupings is shown in the following table:

COICOP Divisions	RPI Groups
01 Food & non-alcoholic beverages	Food
02 Alcohol & tobacco	Alcoholic drink (off sales) Tobacco
03 Clothing & footwear	Clothing & footwear
04 Housing & household services	Housing (exc. Mortgage interest payments, depreciation, council tax & building insurance) Fuel & light
05 Furniture & household goods	Household goods Domestic services
06 Health	Personal goods & services (health-related items)
07 Transport	Motoring expenditure Fares & other travel costs
08 Communication	Household services (exc. domestic services & fees and subscriptions)
09 Recreation & culture	Leisure goods Leisure services
10 Education	Fees & subscriptions (education-

	related items)
11 Restaurants & hotels	Catering Alcoholic drink (on sales)
12 Miscellaneous goods & services	Personal goods & services (non health-related items) Fees & subscriptions (non education-related items)

- The index for the purchase of new cars in the CPI is quality adjusted and based on actual published prices for new cars. New car prices in the RPI are imputed from movements in second hand car prices
 - The CPI weights are based on expenditure by all private households, foreign visitors to the UK and residents of institutional households. In the RPI, weights are based on expenditure by private households only, excluding the highest income households and pensioner households mainly dependent on state benefits
 - In the construction of the CPI weights, amounts paid out in insurance claims are distributed among the COICOP headings according to the nature of the claims' expenditure, with the residual (the service charge) being allocated to the relevant insurance heading. For the RPI weights, total expenditure (that is, gross of claims paid out) is assigned to the relevant insurance heading
- 15 A breakdown of the difference between the CPI and RPI annual rates of inflation is shown in Table 10 of the CPI First Release.

Accessibility

- 16 This release includes the February 2008 data, collected on 12 February. Future publication dates are 15 April, 13 May, 17 June, 15 July, 12 August and 16 September. The European Commission (Eurostat) released figures for the harmonised index of consumer prices (HICP) for the month of February 2008 for EU member states excluding the UK, together with an EU average, on 14 March 2008. Further information on HICP for the European Union, Eurozone and other EU Member States is available from Eurostat's HICP web page: http://epp.eurostat.ec.europa.eu/pls/portal/url/page/PGP_DS_HICP

Further information

- 17 A more detailed quality report for this First Release is available at: <http://www.statistics.gov.uk/CCI/article.asp?ID=1585>
- 18 A full description of how the CPI and RPI are compiled is given in the Consumer Price Indices Technical Manual 2007 edition: <http://www.statistics.gov.uk/statbase/Product.asp?vlnk=2328>

General

- 19 Details of the policy governing the release of new data are available from the press office. Also available is a list of the names of those given pre-publication access to contents of this release.

- 20 Complete runs of series in this release are available to download free of charge at: <http://www.statistics.gov.uk/timeseries> . Alternatively, for low-cost tailored data call Online Services on 020 7533 5675 or email: tailored@statistics.gov.uk
- 21 **National Statistics** are produced to high professional standards set out in the National Statistics Code of Practice. They undergo regular quality assurance reviews to ensure that they meet customer needs. They are produced free from any political interference. © Crown Copyright 2008

1 CPI, RPI and other selected indices: the latest three years

	Consumer prices index (CPI) ¹		Consumer prices index excluding indirect taxes (CPIY) ³		Consumer prices index at constant tax rates (CPI-CT)		All items retail prices index (RPI)		All items RPI excluding			
	Percentage change over 12 months		Percentage change over 12 months		Percentage change over 12 months		Percentage change over 12 months		mortgage interest payments (RPIX)		mortgage interest payments and indirect taxes (RPIY) ²	
	Index (2005=100)	Index (2005=100)	Index (2005=100)	Index (2005=100)	Index (2005=100)	Index (2005=100)	Index (Jan 13, 1987=100)	Index (Jan 13, 1987=100)	Index (Jan 13, 1987=100)	Index (Jan 13, 1987=100)	Index (Jan 13, 1987=100)	Index (Jan 13, 1987=100)
	D7BT	D7G7	EL2Q	EL2S	EAC7	EAD6	CHAW	CZBH	CHMK	CDKQ	CBZW	CBZX
2005 Feb	98.8	1.7	98.8	1.7	98.9	1.6	189.6	3.2	185.9	2.1	177.4	2.0
Mar	99.3	1.9	99.3	2.0	99.3	1.8	190.5	3.2	186.8	2.4	178.3	2.3
Apr	99.7	1.9	99.6	2.0	99.6	1.9	191.6	3.2	187.8	2.3	179.0	2.3
May	100.0	1.9	100.0	2.0	100.0	1.8	192.0	2.9	188.2	2.1	179.4	2.2
Jun	100.0	2.0	100.0	2.2	100.0	1.9	192.2	2.9	188.3	2.2	179.5	2.2
Jul	100.1	2.3	100.1	2.5	100.1	2.3	192.2	2.9	188.3	2.4	179.5	2.5
Aug	100.4	2.4	100.5	2.6	100.4	2.3	192.6	2.8	188.6	2.3	179.8	2.3
Sep	100.6	2.5	100.6	2.6	100.6	2.4	193.1	2.7	189.3	2.5	180.5	2.5
Oct	100.7	2.3	100.8	2.5	100.7	2.3	193.3	2.5	189.5	2.4	180.7	2.3
Nov	100.7	2.1	100.8	2.3	100.7	2.1	193.6	2.4	189.7	2.3	180.9	2.3
Dec	101.0	1.9	101.1	2.1	101.0	1.8	194.1	2.2	190.2	2.0	181.5	2.0
2006 Jan	100.5	1.9	100.6	2.1	100.5	1.9	193.4	2.4	189.4	2.3	180.7	2.3
Feb	100.9	2.0	100.9	2.1	100.8	2.0	194.2	2.4	190.1	2.3	181.4	2.3
Mar	101.1	1.8	101.1	1.9	101.1	1.7	195.0	2.4	190.8	2.1	182.2	2.2
Apr	101.7	2.0	101.7	2.1	101.6	2.0	196.5	2.6	192.3	2.4	183.2	2.3
May	102.2	2.2	102.3	2.3	102.1	2.2	197.7	3.0	193.6	2.9	184.5	2.8
Jun	102.5	2.5	102.6	2.6	102.4	2.4	198.5	3.3	194.2	3.1	185.2	3.2
Jul	102.5	2.4	102.6	2.4	102.4	2.3	198.5	3.3	194.2	3.1	185.2	3.2
Aug	102.9	2.5	103.0	2.6	102.8	2.4	199.2	3.4	194.9	3.3	186.0	3.4
Sep	103.0	2.4	103.2	2.6	102.9	2.3	200.1	3.6	195.3	3.2	186.4	3.3
Oct	103.2	2.4	103.5	2.7	103.1	2.3	200.4	3.7	195.5	3.2	186.7	3.3
Nov	103.4	2.7	103.8	3.0	103.4	2.6	201.1	3.9	196.2	3.4	187.5	3.6
Dec	104.0	3.0	104.3	3.2	103.9	2.9	202.7	4.4	197.4	3.8	188.6	3.9
2007 Jan	103.2	2.7	103.5	2.9	103.1	2.6	201.6	4.2	196.1	3.5	187.3	3.7
Feb	103.7	2.8	103.9	2.9	103.5	2.6	203.1	4.6	197.1	3.7	188.4	3.9
Mar	104.2	3.1	104.3	3.1	103.9	2.9	204.4	4.8	198.3	3.9	189.5	4.0
Apr	104.5	2.8	104.6	2.9	104.2	2.6	205.4	4.5	199.3	3.6	190.0	3.7
May	104.8	2.5	105.0	2.6	104.5	2.3	206.2	4.3	200.0	3.3	190.7	3.4
Jun	105.0	2.4	105.2	2.5	104.7	2.2	207.3	4.4	200.7	3.3	191.4	3.3
Jul	104.4	1.9	104.6	2.0	104.1	1.7	206.1	3.8	199.4	2.7	190.1	2.6
Aug	104.7	1.8	105.0	1.9	104.5	1.6	207.3	4.1	200.1	2.7	190.9	2.6
Sep	104.8	1.8	105.0	1.7	104.5	1.6	208.0	3.9	200.8	2.8	191.6	2.8
Oct	105.3	2.1	105.5	1.9	104.9	1.8	208.9	4.2	201.6	3.1	192.3	3.0
Nov	105.6	2.1	105.8	1.9	105.2	1.8	209.7	4.3	202.4	3.2	193.2	3.0
Dec	106.2	2.1	106.4	2.0	105.8	1.9	210.9	4.0	203.5	3.1	194.4	3.1
2008 Jan	105.5	2.2	105.7	2.1	105.1	2.0	209.8	4.1	202.7	3.4	193.5	3.3
Feb	106.3	2.5	106.5	2.5	105.9	2.3	211.4	4.1	204.3	3.7	195.2	3.6

1 Inflation rates prior to 1997 and index levels prior to 1996 are estimated. Further details are given in *Economic Trends No. 541 December 1998*. These details are also available on the National Statistics website: www.statistics.gov.uk/cci/article.asp?ID=31

2 The taxes excluded are council tax, VAT, duties, vehicle excise duty, insurance tax and air passenger duty.

3 The taxes excluded are VAT, duties, insurance premium tax, air passenger duty, stamp duty on share transactions.

Source: National Statistics

2 CPI: Detailed figures for 12 February 2008

	Percentage change over				Percentage change over		
	Index (2005 =100)	1 mth	12 mths		Index (2005 =100)	1 mth	12 mths
CPI (overall index)	106.3	0.7	2.5				
01 Food and non-alcoholic beverages	111.3	0.5	5.6	06.2 Out-patient services	110.4	0.1	3.2
02 Alcoholic beverages and tobacco	108.1	1.2	2.9	06.2.1/3 Medical services & paramedical services	107.9	0.3	3.0
03 Clothing and footwear	87.6	0.1	-4.7	06.2.2 Dental services	113.2	-	3.5
04 Housing, water, electricity, gas and other fuels	119.1	3.3	3.5	06.3 Hospital services	116.5	0.2	5.9
05 Furniture, household equipment and maintenance	101.3	1.4	1.7	07.1 Purchase of vehicles	98.8	0.2	-1.3
06 Health	108.2	0.1	3.1	07.1.1A New cars	103.2	0.5	1.4
07 Transport	109.1	0.5	6.2	07.1.1B Second-hand cars	91.9	-0.3	-5.0
08 Communication	94.3	-1.6	-3.9	07.1.2/3 Motorcycles and bicycles	98.1	0.4	-2.0
09 Recreation and culture	97.2	0.2	-1.2	07.2 Operation of personal transport equipment	116.7	0.1	12.3
10 Education	133.2	-	13.2	07.2.1 Spare parts and accessories	104.7	-0.4	2.1
11 Restaurants and hotels	108.7	0.3	3.3	07.2.2 Fuels and lubricants	120.0	0.2	20.4
12 Miscellaneous goods and services	107.1	0.3	1.2	07.2.3 Maintenance and repairs	115.2	0.3	5.0
All goods	104.0	1.2	1.9	07.2.4 Other services	111.0	-0.6	3.5
All services	109.0	0.2	3.1	07.3 Transport services	108.8	1.7	4.0
01.1 Food	111.5	0.3	6.0	07.3.1 Passenger transport by railway	114.1	0.5	4.4
01.1.1 Bread and cereals	112.0	0.8	7.9	07.3.2 Passenger transport by road	110.6	0.3	4.3
01.1.2 Meat	106.4	1.0	2.1	07.3.3 Passenger transport by air	90.5	5.6	1.6
01.1.3 Fish	118.8	-0.8	2.0	07.3.4 Passenger transport by sea and inland waterway	114.2	0.9	1.2
01.1.4 Milk, cheese and eggs	120.1	1.3	17.6	08.1 Postal services	121.5	-	6.3
01.1.5 Oils and fats	124.9	-0.3	15.9	08.2/3 Telephone and telefax equipment and services	93.1	-1.6	-4.4
01.1.6 Fruit	101.3	-2.8	0.2	09.1 Audio-visual equipment and related products	72.8	-	-14.0
01.1.7 Vegetables including potatoes and tubers	114.9	0.7	4.4	09.1.1 Reception and reproduction of sound and pictures	68.6	-0.6	-16.4
01.1.8 Sugar, jam, syrups, chocolate and confectionery	111.4	-0.2	5.5	09.1.2 Photographic, cinematographic and optical equipment	48.2	-1.5	-25.5
01.1.9 Food products (nec)	102.6	0.6	2.3	09.1.3 Data processing equipment	60.0	-1.0	-25.6
01.2 Non-alcoholic beverages	109.7	1.8	2.6	09.1.4 Recording media	93.4	1.4	-3.0
01.2.1 Coffee, tea and cocoa	111.6	4.7	2.5	09.1.5 Repair of audio-visual equipment & related products	109.8	0.1	3.2
01.2.2 Mineral waters, soft drinks and juices	109.1	1.0	2.6	09.2 Oth. major durables for recreation & culture	102.0	0.1	1.5
02.1 Alcoholic beverages	101.9	1.1	1.0	09.2.1/2 Major durables for in/outdoor recreation	102.0	0.1	1.5
02.1.1 Spirits	102.7	1.4	2.7	09.3 Other recreational items, gardens and pets	96.7	-0.8	-0.6
02.1.2 Wine	102.4	0.3	0.4	09.3.1 Games, toys and hobbies	91.1	-2.4	-2.8
02.1.3 Beer	99.3	2.5	-	09.3.2 Equipment for sport and open-air recreation	96.4	1.9	-0.8
02.2 Tobacco	112.7	1.3	4.2	09.3.3 Gardens, plants and flowers	104.6	2.2	2.0
03.1 Clothing	87.1	-0.1	-4.9	09.3.4/5 Pets, related products and services	109.8	0.3	4.2
03.1.2 Garments	86.3	-	-5.1	09.4 Recreational and cultural services	110.1	-	3.5
03.1.3 Other clothing and clothing accessories	95.9	-1.2	-3.0	09.4.1 Recreational and sporting services	113.1	0.1	5.2
03.1.4 Cleaning, repair and hire of clothing	107.1	-2.4	0.5	09.4.2 Cultural services	108.7	-	2.7
03.2 Footwear including repairs	90.8	1.4	-3.2	09.5 Books, newspapers and stationery	110.4	3.0	4.9
04.1 Actual rentals for housing	108.1	-	3.3	09.5.1 Books	116.5	9.7	10.4
04.3 Regular maintenance and repair of the dwelling	109.8	0.4	4.6	09.5.2 Newspapers and periodicals	113.6	-	4.4
04.3.1 Materials for maintenance and repair	108.0	0.6	5.0	09.5.3/4 Misc. printed matter, stationery, drawing materials	99.6	0.4	0.1
04.3.2 Services for maintenance and repair	112.4	0.1	4.2	09.6 Package holidays	101.3	0.4	1.3
04.4 Water supply and misc. services for the dwelling	115.3	-	6.5	10.0 Education	133.2	-	13.2
04.4.1 Water supply	115.7	-	6.2	11.1 Catering services	108.7	0.4	3.5
04.4.3 Sewerage collection	114.9	-	6.9	11.1.1 Restaurants & cafes	108.5	0.4	3.5
04.5 Electricity, gas and other fuels	144.7	10.5	2.9	11.1.2 Canteens	110.2	0.6	3.8
04.5.1 Electricity	142.7	10.6	5.2	11.2 Accommodation services	108.5	-0.4	2.1
04.5.2 Gas	150.7	12.6	-2.0	12.1 Personal care	105.5	0.6	1.4
04.5.3 Liquid fuels	143.6	0.2	44.4	12.1.1 Hairdressing and personal grooming establishments	109.4	0.2	3.4
04.5.4 Solid fuels	124.4	0.5	8.9	12.1.2/3 Appliances and products for personal care	104.1	0.7	0.7
05.1 Furniture, furnishings and carpets	101.6	1.9	2.3	12.3 Personal effects (nec)	107.3	1.3	2.8
05.1.1 Furniture and furnishings	100.9	1.6	2.0	12.3.1 Jewellery, clocks and watches	110.7	1.5	3.7
05.1.2 Carpets and other floor coverings	103.8	3.2	3.4	12.3.2 Other personal effects	101.1	1.0	0.5
05.2 Household textiles	92.7	3.1	-1.1	12.4 Social protection	114.6	0.1	4.9
05.3 Household appliances, fitting and repairs	96.3	-0.4	2.1	12.5 Insurance	108.7	0.1	3.7
05.3.1/2 Major appliances and small electric goods	95.1	-0.4	1.8	12.5.2 House contents insurance	108.8	1.9	4.7
05.3.3 Repair of household appliances	106.9	0.1	4.2	12.5.3 Health insurance	118.9	-	6.2
05.4 Glassware, tableware and household utensils	100.6	1.3	1.9	12.5.4 Transport insurance	104.5	-0.7	1.9
05.5 Tools and equipment for house and garden	103.1	0.4	0.7	12.6 Financial services (nec)	101.5	-0.1	-3.2
05.6 Goods and services for routine maintenance	109.4	0.5	2.5	12.6.2 Other financial services (nec)	101.5	-0.1	-3.2
05.6.1 Non-durable household goods	106.1	1.1	1.0	12.7 Other services (nec)	114.4	0.1	4.7
05.6.2 Domestic services and household services	112.3	-0.1	3.8				
06.1 Medical products, appliances and equipment	101.0	-0.1	0.7				
06.1.1 Pharmaceutical products	101.8	0.1	0.3				
06.1.2/3 Other medical and therapeutic equipment	100.6	-0.2	1.1				

Key: - zero or negligible .. not available (nec) not elsewhere covered

Source: National Statistics

3 CPI: Detailed figures by divisions, groups and classes

	Weights	Index (2005=100)						Percentage change over 12 months					
		2008	2007 Sep	2007 Oct	2007 Nov	2007 Dec	2008 Jan	2008 Feb	2007 Sep	2007 Oct	2007 Nov	2007 Dec	2008 Jan
CPI (overall index)	1 000	104.8	105.3	105.6	106.2	105.5	106.3	1.8	2.1	2.1	2.1	2.2	2.5
01 Food and non-alcoholic beverages	109	107.4	109.1	110.1	111.1	110.8	111.3	3.7	4.7	4.8	5.4	6.1	5.6
02 Alcoholic beverages and tobacco	42	107.1	106.8	106.4	105.7	106.9	108.1	3.2	2.7	2.9	2.7	2.2	2.9
03 Clothing and footwear	63	92.5	92.5	92.9	92.2	87.5	87.6	-4.0	-4.3	-4.4	-3.9	-4.9	-4.7
04 Housing, water, electricity, gas and other fuels	115	114.0	114.3	114.6	114.7	115.4	119.1	2.3	1.4	0.8	0.2	0.4	3.5
05 Furniture, household equipment and maintenance	67	102.1	100.8	101.6	104.2	100.0	101.3	1.5	1.8	1.7	0.9	1.7	1.7
06 Health	22	107.1	107.5	107.3	107.6	108.1	108.2	3.4	3.2	3.1	3.3	3.1	3.1
07 Transport	152	105.7	106.6	107.0	108.7	108.6	109.1	2.7	5.1	5.8	5.8	6.4	6.2
08 Communication	23	96.6	96.2	96.3	96.2	95.8	94.3	-3.0	-4.2	-4.0	-3.8	-3.2	-3.9
09 Recreation and culture	152	97.6	97.7	97.6	98.0	97.0	97.2	-1.0	-0.9	-1.1	-1.3	-1.4	-1.2
10 Education	19	122.9	133.2	133.2	133.2	133.2	133.2	13.9	13.2	13.2	13.2	13.2	13.2
11 Restaurants and hotels	137	107.6	107.9	108.0	108.3	108.3	108.7	3.7	3.5	3.4	3.4	3.3	3.3
12 Miscellaneous goods and services	99	105.8	106.4	106.6	106.8	106.8	107.1	1.0	1.3	1.6	1.9	1.5	1.2
All goods	547	102.5	102.8	103.5	104.1	102.8	104.0	0.4	1.0	1.1	1.1	1.3	1.9
All services	453	107.7	108.4	108.2	108.9	108.8	109.0	3.4	3.4	3.2	3.3	3.3	3.1
01.1 Food	95	107.2	109.2	110.4	111.5	111.2	111.5	3.8	5.1	5.1	5.9	6.6	6.0
01.1.1 Bread and cereals	16	106.1	107.2	109.6	111.8	111.2	112.0	3.6	4.6	6.1	7.5	7.8	7.9
01.1.2 Meat	21	102.0	104.8	105.0	105.9	105.4	106.4	-0.7	1.3	1.3	1.5	1.9	2.1
01.1.3 Fish	5	117.2	119.6	119.7	118.0	119.8	118.8	5.2	5.2	6.0	2.7	5.3	2.0
01.1.4 Milk, cheese and eggs	14	112.9	114.4	117.4	118.9	118.6	120.1	10.0	11.3	13.9	15.0	15.4	17.6
01.1.5 Oils and fats	2	118.1	119.7	123.9	124.7	125.3	124.9	10.4	11.2	14.3	15.1	15.6	15.9
01.1.6 Fruit	9	102.3	108.5	109.3	107.6	104.2	101.3	-0.3	4.0	1.3	0.4	3.8	0.2
01.1.7 Vegetables including potatoes and tubers	15	110.4	111.0	111.6	113.7	114.1	114.9	7.8	7.6	4.2	6.8	6.4	4.4
01.1.8 Sugar, jam, syrups, chocolate and confectionery	11	107.9	108.1	109.2	110.8	111.6	111.4	3.0	3.4	4.4	6.0	6.3	5.5
01.1.9 Food products (nec)	2	101.1	101.1	101.5	101.7	102.0	102.6	1.9	0.6	1.8	1.7	2.7	2.3
01.2 Non-alcoholic beverages	14	108.9	108.7	108.2	108.2	107.8	109.7	2.9	2.3	2.4	1.9	2.7	2.6
01.2.1 Coffee, tea and cocoa	3	110.0	108.5	109.4	107.8	106.6	111.6	0.1	-1.4	0.9	-2.1	0.1	2.5
01.2.2 Mineral waters, soft drinks and juices	11	108.4	108.6	107.7	108.2	108.0	109.1	3.7	3.4	2.8	3.1	3.5	2.6
02.1 Alcoholic beverages	18	102.1	101.3	100.5	99.2	100.8	101.9	1.1	-0.1	0.4	0.2	0.6	1.0
02.1.1 Spirits	5	103.2	101.3	99.5	97.9	101.3	102.7	2.9	0.2	1.2	1.1	2.6	2.7
02.1.2 Wine	9	102.1	102.5	101.8	100.8	102.1	102.4	0.2	0.7	0.5	0.9	0.6	0.4
02.1.3 Beer	4	100.4	98.1	98.3	97.0	96.9	99.3	1.0	-2.2	-0.8	-2.5	-2.1	0.0
02.2 Tobacco	24	110.8	110.8	110.7	110.6	111.3	112.7	4.7	4.7	4.6	4.4	3.4	4.2
03.1 Clothing	55	92.2	92.1	92.7	92.0	87.2	87.1	-4.3	-4.7	-4.8	-4.3	-5.0	-4.9
03.1.2 Garments	51	91.5	91.4	92.0	91.3	86.3	86.3	-4.6	-5.0	-5.1	-4.6	-5.3	-5.1
03.1.3 Other clothing and clothing accessories	3	99.2	99.3	100.2	100.3	97.0	95.9	-1.8	-2.1	-2.2	-2.0	-2.8	-3.0
03.1.4 Cleaning, repair and hire of clothing	1	109.0	109.1	109.5	108.5	109.7	107.1	3.4	3.2	3.4	2.3	3.1	0.5
03.2 Footwear including repairs	8	94.5	94.8	94.6	93.6	89.6	90.8	-2.1	-1.8	-2.1	-1.1	-3.8	-3.2
04.1 Actual rentals for housing	51	107.0	107.5	107.6	107.6	108.1	108.1	3.0	3.3	3.3	3.1	3.3	3.3
04.3 Regular maintenance and repair of the dwelling	18	106.9	107.2	107.5	108.1	109.4	109.8	4.3	4.7	4.6	4.4	4.8	4.6
04.3.1 Materials for maintenance and repair	10	104.9	105.0	105.2	106.0	107.3	108.0	4.3	4.7	4.6	4.3	5.2	5.0
04.3.2 Services for maintenance and repair	8	109.8	110.5	110.8	111.1	112.4	112.4	4.4	4.6	4.7	4.7	4.3	4.2
04.4 Water supply and misc. services for the dwelling	11	115.3	115.3	115.3	115.3	115.3	115.3	6.5	6.5	6.5	6.5	6.5	6.5
04.4.1 Water supply	5	115.7	115.7	115.7	115.7	115.7	115.7	6.2	6.2	6.2	6.2	6.2	6.2
04.4.3 Sewerage collection	6	114.9	114.9	114.9	114.9	114.9	114.9	6.9	6.9	6.9	6.9	6.9	6.9
04.5 Electricity, gas and other fuels	35	129.2	129.2	129.9	130.0	130.9	144.7	-1.0	-4.0	-5.6	-7.0	-6.6	2.9
04.5.1 Electricity	17	128.6	128.5	128.5	128.5	129.0	142.7	1.2	-1.5	-3.3	-4.5	-4.6	5.2
04.5.2 Gas	15	133.6	133.1	133.2	133.2	133.9	150.7	-3.7	-8.5	-11.3	-12.9	-12.7	-2.0
04.5.3 Liquid fuels	2	116.7	121.0	137.3	138.1	143.4	143.6	2.5	15.8	37.6	32.1	47.5	44.4
04.5.4 Solid fuels	1	114.4	117.7	119.9	122.4	123.8	124.4	7.0	4.7	5.5	7.6	8.7	8.9
05.1 Furniture, furnishings and carpets	28	103.7	101.4	102.5	108.0	99.7	101.6	2.1	2.1	1.8	-0.2	2.0	2.3
05.1.1 Furniture and furnishings	22	104.1	101.3	103.4	108.9	99.3	100.9	2.1	2.5	2.4	-0.8	1.6	2.0
05.1.2 Carpets and other floor coverings	6	102.2	101.7	99.1	104.7	100.6	103.8	2.0	0.7	-0.8	1.8	3.2	3.4
05.2 Household textiles	8	93.7	91.6	92.7	93.4	90.0	92.7	-1.5	-2.4	-3.1	-2.5	-1.6	-1.1
05.3 Household appliances, fitting and repairs	9	97.4	96.8	98.7	99.1	96.7	96.3	-2.2	1.8	3.8	4.3	3.5	2.1
05.3.1/2 Major appliances and small electric goods	8	96.7	96.0	98.0	98.5	95.5	95.1	-2.7	1.8	4.0	4.6	3.4	1.8
05.3.3 Repair of household appliances	1	103.6	103.7	104.0	104.1	106.8	106.9	2.3	2.3	2.3	2.3	4.3	4.2
05.4 Glassware, tableware and household utensils	7	99.9	100.5	100.5	101.3	99.3	100.6	1.1	1.7	0.7	1.4	2.1	1.9
05.5 Tools and equipment for house and garden	5	101.9	101.7	101.0	101.7	102.6	103.1	0.4	-0.2	-0.7	-0.2	0.6	0.7
05.6 Goods and services for routine maintenance	10	108.1	108.0	108.4	108.5	108.9	109.4	3.5	2.6	2.9	2.8	2.2	2.5
05.6.1 Non-durable household goods	5	105.2	104.6	105.1	105.3	105.0	106.1	1.6	0.6	0.6	0.7	0.4	1.0
05.6.2 Domestic services and household services	5	110.6	110.9	111.1	111.2	112.4	112.3	5.1	4.4	4.9	4.5	3.8	3.8
06.1 Medical products, appliances and equipment	10	100.8	101.0	100.6	101.1	101.1	101.0	1.0	1.0	0.9	1.2	0.9	0.7
06.1.1 Pharmaceutical products	5	101.6	102.0	101.1	101.8	101.7	101.8	0.5	0.9	0.4	0.5	0.3	0.3
06.1.2/3 Other medical and therapeutic equipment	5	100.3	100.4	100.3	100.7	100.8	100.6	1.5	1.2	1.4	2.0	1.5	1.1

Key: - zero or negligible .. not available (nec) not elsewhere covered

Source: National Statistics

3 CPI: Detailed figures by divisions, groups and classes

continued

	Weights	Index (2005=100)						Percentage change over 12 months					
		2008	2007 Sep	2007 Oct	2007 Nov	2007 Dec	2008 Jan	2008 Feb	2007 Sep	2007 Oct	2007 Nov	2007 Dec	2008 Jan
06.2 Out-patient services	4	109.4	109.6	109.5	109.7	110.2	110.4	3.8	3.7	3.3	3.4	3.1	3.2
06.2.1/3 Medical services & paramedical services	2	106.6	107.0	106.7	107.1	107.7	107.9	2.7	2.7	2.2	2.8	2.8	3.0
06.2.2 Dental services	2	112.6	112.5	112.8	112.6	113.1	113.2	5.2	5.0	4.8	4.3	3.6	3.5
06.3 Hospital services	8	114.2	115.0	115.0	115.1	116.3	116.5	5.9	5.5	5.4	5.5	5.7	5.9
07.1 Purchase of vehicles	48	98.9	98.9	99.0	98.6	98.6	98.8	-0.5	-0.5	-0.4	-0.8	-1.1	-1.3
07.1.1A New cars	26	102.6	102.8	102.9	102.8	102.7	103.2	1.5	1.6	1.4	1.4	1.2	1.4
07.1.1B Second-hand cars	19	92.9	92.6	92.9	92.0	92.2	91.9	-3.6	-3.7	-3.0	-3.6	-4.3	-5.0
07.1.2/3 Motorcycles and bicycles	3	98.6	98.5	98.1	97.9	97.7	98.1	-0.8	-0.8	-0.9	-1.9	-0.9	-2.0
07.2 Operation of personal transport equipment	72	109.9	111.6	113.9	115.1	116.6	116.7	3.9	8.1	10.3	10.1	11.7	12.3
07.2.1 Spare parts and accessories	5	104.1	103.7	103.8	103.7	105.1	104.7	0.8	0.5	0.4	0.4	1.8	2.1
07.2.2 Fuels and lubricants	38	108.8	111.8	116.1	118.3	119.8	120.0	3.3	12.1	17.0	16.5	19.3	20.4
07.2.3 Maintenance and repairs	23	112.3	112.7	112.9	113.2	114.9	115.2	5.0	4.6	3.9	3.9	4.9	5.0
07.2.4 Other services	6	110.1	110.7	111.0	111.0	111.6	111.0	5.2	5.7	5.7	5.4	3.9	3.5
07.3 Transport services	32	107.4	108.2	104.2	110.7	107.0	108.8	4.9	7.0	5.1	5.9	5.9	4.0
07.3.1 Passenger transport by railway	8	110.0	109.6	109.6	109.6	113.5	114.1	6.1	5.8	4.8	5.3	5.2	4.4
07.3.2 Passenger transport by road	14	108.4	108.2	108.4	108.8	110.3	110.6	5.8	5.0	4.7	4.8	4.2	4.3
07.3.3 Passenger transport by air	8	92.8	96.9	84.0	106.4	85.7	90.5	0.5	7.0	0.8	2.6	5.1	1.6
07.3.4 Passenger transport by sea and inland waterway	2	121.5	118.9	111.6	113.2	113.2	114.2	-2.0	10.3	13.3	9.3	15.1	1.2
08.1 Postal services	1	121.5	121.5	121.5	121.5	121.5	121.5	6.3	6.3	6.3	6.3	6.3	6.3
08.2/3 Telephone and telefax equipment and services	22	95.6	95.1	95.2	95.1	94.7	93.1	-3.4	-4.6	-4.5	-4.2	-3.7	-4.4
09.1 Audio-visual equipment and related products	27	76.8	75.8	75.4	75.7	72.8	72.8	-12.3	-12.5	-13.5	-13.9	-15.5	-14.0
09.1.1 Reception and reproduction of sound and pictures	6	73.5	72.6	72.5	72.2	69.0	68.6	-13.3	-13.7	-14.2	-14.4	-17.0	-16.4
09.1.2 Photographic, cinematographic and optical equipment	4	53.7	54.2	50.9	48.9	49.0	48.2	-28.2	-27.4	-30.4	-31.8	-26.0	-25.5
09.1.3 Data processing equipment	5	64.7	64.1	62.9	62.7	60.6	60.0	-24.7	-21.7	-23.9	-24.6	-26.2	-25.6
09.1.4 Recording media	11	96.1	93.9	95.3	97.7	92.2	93.4	1.5	-0.8	-1.0	-1.7	-6.0	-3.0
09.1.5 Repair of audio-visual equipment & related products	1	108.5	108.8	108.8	109.1	109.7	109.8	3.7	3.8	3.8	4.0	3.2	3.2
09.2 Other major durables for recreation & culture	9	100.8	101.1	101.7	101.7	101.9	102.0	-0.1	0.1	0.9	0.9	1.4	1.5
09.2.1/2 Major durables for in/outdoor recreation	9	100.8	101.1	101.7	101.7	101.9	102.0	-0.1	0.1	0.9	0.9	1.4	1.5
09.3 Other recreational items, gardens and pets	38	97.3	97.5	97.6	98.2	97.5	96.7	0.3	0.2	0.6	0.7	0.1	-0.6
09.3.1 Games, toys and hobbies	22	93.6	93.7	93.3	94.0	93.4	91.1	-0.4	-0.8	-0.6	-0.5	-1.6	-2.8
09.3.2 Equipment for sport and open-air recreation	4	98.6	98.5	99.1	98.3	94.6	96.4	-0.1	0.0	0.9	0.3	-3.4	-0.8
09.3.3 Gardens, plants and flowers	5	100.1	100.3	100.4	101.7	102.3	104.6	1.2	2.0	0.7	1.2	2.1	2.0
09.3.4/5 Pets, related products and services	7	106.4	106.7	108.5	109.2	109.4	109.8	2.1	2.2	3.9	4.4	5.6	4.2
09.4 Recreational and cultural services	32	110.0	110.7	110.7	110.8	110.0	110.1	3.9	3.8	4.0	3.6	4.0	3.5
09.4.1 Recreational and sporting services	11	112.6	113.3	113.3	113.3	113.0	113.1	5.0	5.7	5.6	5.6	5.2	5.2
09.4.2 Cultural services	21	108.8	109.5	109.6	109.7	108.7	108.7	3.3	3.0	3.2	2.7	3.4	2.7
09.5 Books, newspapers and stationery	17	106.8	107.0	106.4	106.8	107.2	110.4	2.1	2.8	1.7	1.3	4.8	4.9
09.5.1 Books	5	109.7	109.1	106.2	106.3	106.2	116.5	5.7	6.3	2.3	0.5	10.1	10.4
09.5.2 Newspapers and periodicals	7	110.6	111.5	111.9	112.8	113.6	113.6	2.0	3.1	3.0	3.7	4.6	4.4
09.5.3/4 Misc. printed matter, stationery, drawing materials	5	98.0	98.3	98.7	98.9	99.2	99.6	-2.1	-1.8	-1.5	-1.7	-0.3	0.1
09.6 Package holidays	29	100.4	100.7	100.8	101.1	101.0	101.3	1.3	1.4	1.1	1.4	0.9	1.3
10.0 Education	19	122.9	133.2	133.2	133.2	133.2	133.2	13.9	13.2	13.2	13.2	13.2	13.2
11.1 Catering services	118	107.4	107.7	107.9	108.2	108.2	108.7	3.7	3.6	3.4	3.4	3.3	3.5
11.1.1 Restaurants & cafes	106	107.2	107.5	107.7	108.1	108.1	108.5	3.5	3.4	3.3	3.4	3.3	3.5
11.1.2 Canteens	12	108.8	109.0	109.2	109.1	109.6	110.2	5.7	5.4	4.1	4.0	3.7	3.8
11.2 Accommodation services	19	109.0	109.4	109.1	108.9	109.0	108.5	3.3	3.0	3.4	3.3	3.0	2.1
12.1 Personal care	30	103.9	105.4	105.5	105.4	104.9	105.5	1.2	2.5	2.8	3.1	2.5	1.4
12.1.1 Hairdressing and personal grooming establishments	8	108.1	108.4	108.9	109.1	109.2	109.4	3.8	3.7	3.9	3.7	3.4	3.4
12.1.2/3 Appliances and products for personal care	22	102.5	104.3	104.3	104.0	103.4	104.1	0.3	2.1	2.4	2.9	2.2	0.7
12.3 Personal effects (nec)	10	106.2	106.0	106.7	106.7	105.9	107.3	1.7	1.6	2.3	2.4	2.3	2.8
12.3.1 Jewellery, clocks and watches	7	108.8	108.9	109.6	109.6	109.1	110.7	2.0	2.0	2.6	3.0	3.1	3.7
12.3.2 Other personal effects	3	102.0	100.9	101.8	101.7	100.0	101.1	1.2	0.5	1.6	1.1	0.4	0.5
12.4 Social protection	12	112.6	113.0	113.5	113.7	114.5	114.6	5.4	5.4	5.4	5.3	4.9	4.9
12.5 Insurance	8	106.1	106.5	106.8	107.5	108.6	108.7	3.6	3.9	3.2	4.4	3.9	3.7
12.5.2 House contents insurance	2	103.0	102.1	103.7	104.9	106.8	108.8	0.5	-1.2	0.8	2.4	3.5	4.7
12.5.3 Health insurance	2	116.3	117.5	117.5	117.5	118.9	118.9	6.9	6.8	6.8	6.8	6.2	6.2
12.5.4 Transport insurance	4	103.5	104.2	104.1	104.7	105.3	104.5	3.5	5.0	2.7	4.2	3.0	1.9
12.6 Financial services (nec)	28	102.1	102.0	101.8	102.4	101.7	101.5	-3.0	-3.5	-3.0	-2.5	-3.2	-3.2
12.6.2 Other financial services (nec)	28	102.1	102.0	101.8	102.4	101.7	101.5	-3.0	-3.5	-3.0	-2.5	-3.2	-3.2
12.7 Other services (nec)	11	110.4	112.0	112.4	112.6	114.3	114.4	3.0	3.7	3.8	3.7	4.7	4.7

Key: - zero or negligible .. not available (nec) not elsewhere covered

Source: National Statistics

4 CPI: Detailed figures by division¹

	Food and non-alcoholic beverages	Alcoholic beverages and tobacco	Clothing and footwear	Housing, water, electricity, gas & other fuels	Furniture, household equipment & routine maintenance	Health ²	Transport	Communication	Recreation and culture	Education ²	Restaurants and hotels	Miscellaneous goods and services ²	CPI (overall index)
COICOP Division	01	02	03	04	05	06	07	08	09	10	11	12	
Weights													
2008	CHZR 109	CHZS 42	CHZT 63	CHZU 115	CHZV 67	CHZW 22	CHZX 152	CHZY 23	CHZZ 152	CJUU 19	CJUV 137	CJUW 99	CHZQ 1 000
Monthly indices (2005=100)													
	D7BU	D7BV	D7BW	D7BX	D7BY	D7BZ	D7C2	D7C3	D7C4	D7C5	D7C6	D7C7	D7BT
2006 Feb	101.0	100.8	95.9	103.6	98.5	101.1	101.4	101.0	99.4	103.3	101.9	102.1	100.9
Mar	100.4	101.1	96.5	104.5	100.3	101.0	101.4	100.9	98.9	103.3	102.2	102.4	101.1
Apr	100.2	102.3	96.5	107.3	98.5	102.2	102.9	100.9	99.1	103.3	102.5	103.3	101.7
May	101.7	102.5	97.2	108.8	99.3	102.6	103.5	99.7	98.9	103.3	103.0	103.4	102.2
Jun	102.4	103.6	96.7	109.7	100.2	102.5	103.5	100.0	98.7	103.3	103.1	103.9	102.5
Jul	102.6	103.4	92.2	110.5	98.1	103.0	105.5	99.8	98.4	103.3	103.5	104.0	102.5
Aug	103.0	103.8	94.4	110.9	99.1	103.4	105.8	99.2	98.4	103.3	103.6	104.5	102.9
Sep	103.6	103.7	96.4	111.5	100.6	103.6	102.9	99.6	98.6	107.9	103.8	104.7	103.0
Oct	104.2	103.9	96.6	112.7	99.0	104.2	101.5	100.4	98.6	117.8	104.2	105.0	103.2
Nov	105.1	103.4	97.2	113.7	100.0	104.1	101.1	100.3	98.7	117.8	104.5	105.0	103.4
Dec	105.4	103.0	96.0	114.5	103.3	104.2	102.8	99.9	99.2	117.8	104.7	104.9	104.0
2007 Jan	104.4	104.5	92.0	114.9	98.3	104.8	102.1	99.0	98.3	117.8	104.9	105.1	103.2
Feb	105.4	105.1	91.9	115.1	99.6	104.9	102.8	98.1	98.4	117.8	105.2	105.8	103.7
Mar	106.0	105.6	92.8	115.0	102.9	104.8	103.1	98.1	98.2	117.8	105.7	106.2	104.2
Apr	106.2	107.0	93.7	115.7	100.7	105.5	104.5	97.2	98.3	117.8	106.3	105.8	104.5
May	106.7	106.8	93.7	115.0	101.8	105.8	106.1	96.6	98.0	117.8	106.6	105.7	104.8
Jun	107.3	107.1	93.6	114.5	104.0	106.1	106.8	96.1	97.6	117.8	106.9	105.8	105.0
Jul	105.5	106.9	89.8	114.3	99.7	106.6	108.0	94.8	97.0	117.8	107.2	106.1	104.4
Aug	106.1	107.0	91.1	114.0	100.3	106.8	108.6	97.2	97.5	117.8	107.4	105.6	104.7
Sep	107.4	107.1	92.5	114.0	102.1	107.1	105.7	96.6	97.6	122.9	107.6	105.8	104.8
Oct	109.1	106.8	92.5	114.3	100.8	107.5	106.6	96.2	97.7	133.2	107.9	106.4	105.3
Nov	110.1	106.4	92.9	114.6	101.6	107.3	107.0	96.3	97.6	133.2	108.0	106.6	105.6
Dec	111.1	105.7	92.2	114.7	104.2	107.6	108.7	96.2	98.0	133.2	108.3	106.8	106.2
2008 Jan	110.8	106.9	87.5	115.4	100.0	108.1	108.6	95.8	97.0	133.2	108.3	106.8	105.5
Feb	111.3	108.1	87.6	119.1	101.3	108.2	109.1	94.3	97.2	133.2	108.7	107.1	106.3
Percentage change on a year earlier													
	D7G8	D7G9	D7GA	D7GB	D7GC	D7GD	D7GE	D7GF	D7GG	D7GH	D7GI	D7GJ	D7G7
2006 Feb	1.1	1.6	-4.7	6.4	-0.5	2.3	4.2	0.4	-0.8	4.7	3.5	3.6	2.0
Mar	-0.4	2.5	-4.7	7.0	-0.4	2.1	3.5	0.5	-1.4	4.7	3.6	3.7	1.8
Apr	0.3	2.5	-4.4	7.7	-0.8	2.7	4.4	0.3	-1.6	4.7	3.0	4.0	2.0
May	1.1	2.2	-3.7	9.0	-0.8	2.9	4.0	-0.4	-1.6	4.7	3.2	4.1	2.2
Jun	1.8	3.3	-3.9	9.8	-0.1	2.7	3.9	-0.3	-1.6	4.7	3.2	4.4	2.5
Jul	3.2	2.8	-4.5	10.0	-1.3	2.4	3.3	0.3	-1.4	4.7	3.2	3.6	2.4
Aug	3.4	3.3	-3.9	10.5	-0.5	2.6	2.4	-0.7	-0.9	4.7	3.0	3.9	2.5
Sep	4.0	3.4	-3.5	10.7	0.3	2.8	0.6	-0.2	-1.0	7.1	2.9	3.9	2.4
Oct	4.7	3.2	-3.3	10.8	-0.4	3.1	-0.5	0.9	-1.1	14.0	3.0	3.8	2.4
Nov	5.0	2.7	-3.2	11.1	-0.5	3.1	0.8	0.7	-0.7	14.0	3.2	3.5	2.7
Dec	4.6	2.7	-4.1	11.4	0.6	3.9	2.1	0.5	-0.3	14.0	3.2	3.3	3.0
2007 Jan	3.9	3.5	-4.1	11.2	0.5	3.8	0.9	-1.8	-0.3	14.0	3.3	3.1	2.7
Feb	4.4	4.2	-4.2	11.1	1.2	3.7	1.4	-2.8	-1.0	14.0	3.3	3.6	2.8
Mar	5.6	4.4	-3.9	10.1	2.7	3.7	1.6	-2.8	-0.7	14.0	3.4	3.7	3.1
Apr	6.0	4.5	-2.8	7.9	2.2	3.2	1.5	-3.7	-0.8	14.0	3.8	2.4	2.8
May	5.0	4.2	-3.6	5.7	2.5	3.1	2.5	-3.2	-0.8	14.0	3.5	2.2	2.5
Jun	4.8	3.4	-3.2	4.3	3.8	3.4	3.2	-3.9	-1.1	14.0	3.7	1.8	2.4
Jul	2.8	3.4	-2.6	3.5	1.6	3.4	2.4	-5.0	-1.4	14.0	3.6	2.0	1.9
Aug	3.0	3.1	-3.5	2.8	1.2	3.3	2.6	-2.0	-0.9	14.0	3.6	1.1	1.8
Sep	3.7	3.2	-4.0	2.3	1.5	3.4	2.7	-3.0	-1.0	13.9	3.7	1.0	1.8
Oct	4.7	2.7	-4.3	1.4	1.8	3.2	5.1	-4.2	-0.9	13.2	3.5	1.3	2.1
Nov	4.8	2.9	-4.4	0.8	1.7	3.1	5.8	-4.0	-1.1	13.2	3.4	1.6	2.1
Dec	5.4	2.7	-3.9	0.2	0.9	3.3	5.8	-3.8	-1.3	13.2	3.4	1.9	2.1
2008 Jan	6.1	2.2	-4.9	0.4	1.7	3.1	6.4	-3.2	-1.4	13.2	3.3	1.5	2.2
Feb	5.6	2.9	-4.7	3.5	1.7	3.1	6.2	-3.9	-1.2	13.2	3.3	1.2	2.5

Key: - zero or negligible

¹ Inflation rates prior to 1997 and index levels prior to 1996 are estimated. Further details are given in *Economic Trends No. 541 December 1998*. These details are also available on the National Statistics website: www.statistics.gov.uk/cpi/article.asp?ID=31

² The coverage of these categories was extended in January 2000; further extensions to coverage came into effect in January 2001 for health and miscellaneous goods and services; the coverage of miscellaneous goods and services was further extended with effect from January 2002 (details are given in a series of Economic Trends articles available on the National Statistics website: www.statistics.gov.uk/cpi)

Source: National Statistics

5 CPI: Detailed goods and services breakdown¹

	Weights		Index (2005=100)						Percentage change over 12 months						Percentage change over 1 month
	2008	2007	2007		2007		2008		2007	2007	2007	2007	2008	2008	2008
			Sep	Oct	Nov	Dec	Jan	Feb							
CPI (overall index)	1 000	104.8	105.3	105.6	106.2	105.5	106.3	1.8	2.1	2.1	2.1	2.2	2.5	0.7	
All goods	547	102.5	102.8	103.5	104.1	102.8	104.0	0.4	1.0	1.1	1.1	1.3	1.9	1.2	
Food, alcoholic beverages & tobacco	151	107.3	108.4	109.0	109.5	109.6	110.4	3.6	4.1	4.2	4.6	5.0	4.8	0.7	
Processed food & non-alcoholic beverages	59	108.8	109.5	111.1	112.4	112.2	113.2	4.9	5.4	6.7	7.6	8.0	8.3	0.9	
Non-processed food	50	105.8	108.6	109.0	109.5	109.0	109.0	2.3	4.0	2.6	3.0	3.9	2.5	-	
Seasonal food	29	108.8	111.6	112.2	112.4	111.9	111.1	4.7	6.1	3.6	4.1	5.5	2.8	-0.7	
Meat	21	102.0	104.8	105.0	105.9	105.4	106.4	-0.7	1.3	1.3	1.5	1.9	2.1	1.0	
Alcoholic beverages & tobacco	42	107.1	106.8	106.4	105.7	106.9	108.1	3.2	2.7	2.9	2.7	2.2	2.9	1.2	
Industrial goods	396	100.8	100.9	101.5	102.1	100.4	101.8	-0.7	-0.2	0.0	-0.2	-0.1	0.9	1.3	
Energy	73	119.0	120.7	123.5	124.8	126.0	132.5	1.5	3.9	5.3	4.4	5.8	11.4	5.1	
Electricity, gas & miscellaneous energy	33	130.6	130.4	130.5	130.6	131.2	145.9	-0.8	-4.6	-6.8	-8.1	-8.1	1.9	11.2	
Liquid fuels, vehicle fuels & lubricants	40	109.0	112.1	116.7	118.9	120.5	120.7	3.2	12.2	17.6	17.0	20.1	21.1	0.2	
Non-energy industrial goods	323	97.4	97.2	97.5	98.0	95.7	96.2	-1.2	-1.1	-1.2	-1.3	-1.4	-1.4	0.5	
Clothing & footwear goods	62	92.2	92.2	92.7	92.0	87.2	87.3	-4.2	-4.4	-4.5	-4.0	-5.0	-4.8	0.1	
Housing goods	76	102.6	101.4	102.2	104.6	100.9	102.2	1.9	2.3	2.1	1.3	2.3	2.3	1.3	
Household goods	61	101.2	99.8	100.7	103.5	98.8	100.2	1.1	1.5	1.3	0.4	1.5	1.5	1.5	
Water supply; materials for maintenance & repair	15	108.3	108.3	108.5	109.0	109.9	110.4	4.9	5.2	5.2	4.9	5.5	5.4	0.4	
Medical products, appliances & equipment	10	100.8	101.0	100.6	101.1	101.1	101.0	1.0	1.0	0.9	1.2	0.9	0.7	-0.1	
Vehicles, spare parts & accessories	53	99.4	99.4	99.5	99.1	99.3	99.4	-0.4	-0.4	-0.3	-0.6	-0.8	-1.0	0.1	
Recreational goods	90	92.6	92.4	92.3	92.7	91.5	91.7	-3.5	-3.4	-3.7	-3.9	-4.0	-3.7	0.2	
Audio-visual goods	26	75.7	74.7	74.3	74.6	71.6	71.6	-12.9	-13.1	-14.1	-14.6	-16.2	-14.6	-	
Other recreational goods	64	100.3	100.5	100.5	101.0	100.7	101.0	0.8	0.9	0.9	0.9	1.5	1.1	0.3	
Miscellaneous goods	32	103.7	104.9	105.2	105.0	104.3	105.2	0.8	2.0	2.4	2.7	2.3	1.3	0.9	
All services	453	107.7	108.4	108.2	108.9	108.8	109.0	3.4	3.4	3.2	3.3	3.3	3.1	0.2	
Housing services	73	108.0	108.4	108.6	108.7	109.3	109.4	3.5	3.7	3.7	3.6	3.7	3.7	-	
Actual rentals for housing	51	107.0	107.5	107.6	107.6	108.1	108.1	3.0	3.3	3.3	3.1	3.3	3.3	-	
Primary housing services	16	110.7	111.0	111.3	111.6	112.5	112.8	4.8	4.6	5.0	5.2	5.1	5.2	0.3	
Other housing services	6	109.6	109.8	110.1	110.1	111.6	111.5	4.7	4.1	4.5	4.2	3.9	3.9	-0.1	
Travel & transport services	65	109.2	109.7	107.9	111.3	110.1	111.0	4.9	5.9	4.6	5.0	5.1	4.2	0.8	
Services for personal transport equipment	29	111.9	112.3	112.5	112.8	114.2	114.3	5.0	4.8	4.3	4.2	4.7	4.7	0.1	
Transport services	32	107.4	108.2	104.2	110.7	107.0	108.8	4.9	7.0	5.1	5.9	5.9	4.0	1.7	
Transport insurance	4	103.5	104.2	104.1	104.7	105.3	104.5	3.5	5.0	2.7	4.2	3.0	1.9	-0.7	
Communication	23	96.6	96.2	96.3	96.2	95.8	94.3	-3.0	-4.2	-4.0	-3.8	-3.2	-3.9	-1.6	
Recreational & personal services	208	107.0	107.4	107.5	107.7	107.6	107.9	3.4	3.3	3.2	3.2	3.0	3.1	0.3	
Package holidays & accommodation	48	103.8	104.1	104.0	104.1	104.1	104.2	2.1	2.0	2.0	2.1	1.7	1.6	0.1	
Other recreational & personal services	160	107.9	108.3	108.5	108.8	108.7	109.0	3.8	3.7	3.5	3.5	3.4	3.5	0.3	
Catering services	118	107.4	107.7	107.9	108.2	108.2	108.7	3.7	3.6	3.4	3.4	3.3	3.5	0.4	
Non-catering recreational & personal services	42	109.5	110.2	110.3	110.4	109.9	109.9	3.8	3.8	3.9	3.6	3.8	3.4	-	
Miscellaneous & other services	84	110.9	113.3	113.3	113.6	113.8	113.8	4.0	3.8	4.0	4.1	4.0	4.0	-	
Miscellaneous services	53	106.7	107.2	107.2	107.6	107.8	107.8	0.5	0.4	0.7	0.9	0.6	0.6	-	
Medical services	12	112.6	113.2	113.2	113.3	114.3	114.4	5.1	4.9	4.7	4.7	4.8	4.9	0.2	
Education	19	122.9	133.2	133.2	133.2	133.2	133.2	13.9	13.2	13.2	13.2	13.2	13.2	-	
Special aggregates															
Durables	115	95.6	94.9	95.2	96.2	93.9	94.3	-2.6	-2.1	-2.2	-3.0	-2.7	-2.6	0.5	
Semi-durables	132	95.3	94.9	95.2	95.2	92.0	92.4	-1.6	-2.1	-2.3	-2.1	-2.7	-2.4	0.5	
Non-durables	76	104.1	104.9	105.1	105.4	105.6	106.1	1.6	2.3	2.4	2.7	2.9	2.3	0.5	
Seasonal food	29	108.8	111.6	112.2	112.4	111.9	111.1	4.7	6.1	3.6	4.1	5.5	2.8	-0.7	
Non-seasonal food	66	106.6	108.1	109.7	111.1	110.9	111.7	3.4	4.6	5.8	6.7	7.1	7.4	0.7	
Energy, food, alcoholic beverages & tobacco	224	110.8	112.0	113.3	114.0	114.5	116.9	2.8	4.0	4.6	4.5	5.2	6.9	2.1	
Energy & unprocessed food	123	113.3	115.4	117.2	118.2	118.6	122.3	1.8	3.9	4.2	3.8	5.0	7.8	3.1	
Energy & seasonal food	102	116.0	118.0	120.1	121.1	121.8	126.0	2.3	4.5	4.8	4.3	5.7	9.0	3.5	
Tobacco	24	110.8	110.8	110.7	110.6	111.3	112.7	4.7	4.7	4.6	4.4	3.4	4.2	1.3	
Housing, water, electricity, gas & other fuels	115	114.0	114.3	114.6	114.7	115.4	119.1	2.3	1.4	0.8	0.2	0.4	3.5	3.3	
Education, health & social protection ²	53	113.3	116.9	116.9	117.1	117.5	117.5	7.2	7.0	7.0	7.0	6.9	6.9	-	
All items excluding															
Energy	927	103.9	104.3	104.4	105.0	104.1	104.5	1.8	2.0	1.8	1.9	1.9	1.8	0.4	
Energy, food, alcoholic beverages & tobacco	776	103.2	103.5	103.6	104.1	103.1	103.4	1.5	1.5	1.4	1.4	1.3	1.2	0.3	
Energy & unprocessed food	877	103.8	104.1	104.2	104.7	103.9	104.3	1.8	1.8	1.8	1.8	1.8	1.8	0.4	
Seasonal food	971	104.7	105.2	105.4	106.0	105.3	106.1	1.7	2.0	2.1	2.0	2.1	2.5	0.8	
Energy & seasonal food	898	103.7	104.1	104.2	104.7	103.9	104.3	1.7	1.8	1.8	1.8	1.8	1.8	0.4	
Tobacco	976	104.7	105.2	105.5	106.1	105.4	106.1	1.7	2.0	2.0	2.0	2.2	2.4	0.7	
Alcoholic beverages & tobacco	958	104.7	105.3	105.6	106.2	105.4	106.2	1.7	2.1	2.1	2.1	2.2	2.5	0.7	
Liquid fuels, vehicle fuels & lubricants	960	104.6	105.1	105.2	105.7	104.9	105.7	1.7	1.7	1.5	1.5	1.5	1.8	0.7	
Housing, water, electricity, gas & other fuels	885	103.7	104.3	104.5	105.2	104.3	104.7	1.7	2.2	2.3	2.3	2.4	2.3	0.4	
Education, health & social protection	947	104.4	104.7	105.0	105.6	104.9	105.6	1.5	1.8	1.8	1.8	1.9	2.2	0.8	

Key: - zero or negligible

² The coverage of this special aggregate has changed extensively since January 2000, when Social protection was first included and extensions to the Education and Health divisions also took effect. Health was further extended with effect from January 2001. Details are given in a series of Economic Trends articles available on the National Statistics website: www.statistics.gov.uk/cpi

¹ For further information on the composition of the indices shown, see 'The Consumer Prices Index: Goods and Services Indices and Special Aggregates', which can be downloaded from: www.statistics.gov.uk/cpi/article.asp?id=1060

6 CPI goods and services: the latest three years

Percentage change over 12 months

	Goods components					Services components					
	Food & non-alcoholic beverages	Alcoholic beverages & tobacco	Energy ¹	Non-energy industrial goods ²	All goods	Housing services ³	Travel & transport services ³	Recreational & personal services ³	Communication	Miscellaneous & other services ³	All services
Weights											
2008	CHZR 109	CHZS 42	A9F3 73	A9ER 323	ICVH 547	A9FG 73	A9FJ 65	A9FL 208	CHZY 23	A9FQ 84	ICVI 453
Monthly											
2005 Feb	D7G8 0.8	D7G9 2.9	DKL5 9.6	DKK3 -2.6	D7NM -0.2	DKN2 3.5	DKN5 5.8	DKN7 3.3	D7GF -2.7	DKO4 5.6	D7NN 3.8
Mar	1.7	2.2	10.1	-2.2	0.2	3.6	6.8	3.2	-2.9	5.5	3.9
Apr	1.0	2.0	11.5	-2.2	0.1	4.3	4.9	3.4	-3.2	6.5	4.0
May	1.4	2.3	8.3	-2.2	-0.1	4.3	6.3	3.4	-3.6	6.6	4.2
Jun	2.2	2.3	8.7	-2.1	0.2	4.2	6.0	3.1	-2.9	6.8	4.1
Jul	1.7	2.2	11.2	-1.9	0.5	4.4	6.9	3.2	-2.5	7.7	4.5
Aug	2.2	1.8	12.4	-2.1	0.6	4.4	7.5	3.1	-2.1	7.7	4.6
Sep	2.0	1.4	15.4	-2.2	0.7	4.4	6.3	3.2	-1.2	7.5	4.5
Oct	1.5	1.9	13.9	-2.1	0.6	4.0	7.2	3.3	-1.6	6.6	4.4
Nov	1.7	2.5	11.1	-2.0	0.4	3.9	5.8	3.1	-1.2	6.6	4.1
Dec	1.7	2.5	10.2	-2.1	0.3	4.0	3.4	3.1	-1.0	6.6	3.8
2006 Jan	1.2	2.3	12.8	-2.3	0.3	3.9	6.1	2.9	0.5	5.6	3.9
Feb	1.1	1.6	12.5	-1.7	0.6	3.9	4.8	2.9	0.4	5.6	3.7
Mar	-0.4	2.5	12.2	-1.9	0.2	3.9	4.4	2.9	0.5	5.7	3.7
Apr	0.3	2.5	14.4	-2.2	0.5	3.3	6.5	2.7	0.3	5.7	3.8
May	1.1	2.2	19.3	-1.9	1.3	3.3	2.8	2.9	-0.4	5.6	3.3
Jun	1.8	3.3	19.8	-1.7	1.7	3.4	3.2	2.9	-0.3	5.6	3.4
Jul	3.2	2.8	19.4	-2.0	1.8	3.4	2.4	2.9	0.3	4.9	3.2
Aug	3.4	3.3	17.9	-1.3	2.2	3.4	1.6	2.8	-0.7	4.7	2.9
Sep	4.0	3.4	11.6	-1.0	1.8	3.3	3.0	2.8	-0.2	5.3	3.2
Oct	4.7	3.2	9.8	-1.3	1.5	3.4	2.5	3.0	0.9	6.7	3.6
Nov	5.0	2.7	11.7	-1.1	1.8	3.5	3.7	3.1	0.7	6.4	3.7
Dec	4.6	2.7	14.9	-0.8	2.3	3.5	4.1	3.1	0.5	6.4	3.8
2007 Jan	3.9	3.5	12.8	-0.9	2.0	3.8	3.1	3.2	-1.8	6.1	3.6
Feb	4.4	4.2	11.8	-1.0	2.0	3.7	5.0	3.2	-2.8	6.1	3.8
Mar	5.6	4.4	11.6	-0.5	2.5	3.7	4.2	3.3	-2.8	6.1	3.7
Apr	6.0	4.5	7.9	-0.3	2.3	3.8	3.8	3.3	-3.7	4.5	3.3
May	5.0	4.2	4.4	-0.4	1.6	3.8	6.4	3.1	-3.2	4.4	3.6
Jun	4.8	3.4	3.3	-0.4	1.4	3.7	6.8	3.3	-3.9	4.4	3.7
Jul	2.8	3.4	0.9	-0.8	0.5	3.6	6.3	3.2	-5.0	4.4	3.5
Aug	3.0	3.1	-0.5	-1.1	0.1	3.5	7.6	3.4	-2.0	3.9	3.8
Sep	3.7	3.2	1.5	-1.2	0.4	3.5	4.9	3.4	-3.0	4.0	3.4
Oct	4.7	2.7	3.9	-1.1	1.0	3.7	5.9	3.3	-4.2	3.8	3.4
Nov	4.8	2.9	5.3	-1.2	1.1	3.7	4.6	3.2	-4.0	4.0	3.2
Dec	5.4	2.7	4.4	-1.3	1.1	3.6	5.0	3.2	-3.8	4.1	3.3
2008 Jan	6.1	2.2	5.8	-1.4	1.3	3.7	5.1	3.0	-3.2	4.0	3.3
Feb	5.6	2.9	11.4	-1.4	1.9	3.7	4.2	3.1	-3.9	4.0	3.1

Key: - zero or negligible

3 For further information on all of these services components, see 'The Consumer Prices Index: Goods and Services Indices and Special Aggregates', which can be downloaded from: www.statistics.gov.uk/cci/article.asp?id=1060

1 Comprises 'Electricity, gas and other fuels' (group 04.5) and 'Fuels and lubricants' (class 07.2.2).

2 Comprises all other goods elements of the CPI. For further information, see 'The Consumer Prices Index: Goods and Services Indices and Special Aggregates', which can be downloaded from: www.statistics.gov.uk/cci/article.asp?id=1060

Source: National Statistics

7 HICP¹ - International comparisons: EU countries

Percentage change over 12 months

	Austria	Belgium	Bulgaria	Cyprus	Czech Republic	Denmark	Estonia	Finland	France	Germany	Greece	Hungary	Ireland	Italy	Latvia
	D7SK	D7SL	GHY8	D7RO	D7RP	D7SM	D7RQ	D7SN	D7SO	D7SP	D7SQ	D7RR	D7SS	D7ST	D7RS
2005	2.1	2.5	6.0	2.0	1.6	1.7	4.1	0.8	1.9	1.9	3.5	3.5	2.2	2.2	6.9
2006	1.7	2.3	7.4	2.2	2.1	1.9	4.4	1.3	1.9	1.8	3.3	4.0	2.7	2.2	6.6
2007	2.2	1.8	7.6	2.2	3.0	1.7	6.7	1.6	1.6	2.3	3.0	7.9	2.9	2.0	10.1
2006 Feb	1.5	2.8	9.4	2.3	2.4	2.1	4.5	1.3	2.0	2.1	3.1	2.3	2.7	2.2	7.0
Mar	1.3	2.2	9.1	2.6	2.4	1.8	4.0	1.2	1.7	1.9	3.3	2.4	2.8	2.2	6.6
Apr	2.1	2.6	8.5	2.5	2.3	1.8	4.3	1.5	2.0	2.3	3.5	2.4	2.7	2.3	6.1
May	2.1	2.8	9.0	2.5	2.8	2.1	4.6	1.7	2.4	2.1	3.3	2.9	3.0	2.3	7.1
Jun	1.9	2.5	8.4	2.6	2.3	2.1	4.4	1.5	2.2	2.0	3.4	2.9	2.9	2.4	6.3
Jul	2.0	2.4	7.8	2.8	2.4	2.0	4.5	1.4	2.2	2.1	3.9	3.2	2.9	2.3	6.9
Aug	2.1	2.3	7.0	2.7	2.6	1.9	5.0	1.3	2.1	1.8	3.4	4.7	3.2	2.3	6.8
Sep	1.3	1.9	5.4	2.2	2.2	1.5	3.8	0.8	1.5	1.0	3.1	5.9	2.2	2.4	5.9
Oct	1.3	1.7	5.2	1.7	0.8	1.4	3.8	0.9	1.2	1.1	3.1	6.3	2.2	1.9	5.6
Nov	1.6	2.0	5.9	1.3	1.0	1.8	4.7	1.3	1.6	1.5	3.2	6.4	2.4	2.0	6.3
Dec	1.6	2.1	6.1	1.5	1.5	1.7	5.1	1.2	1.7	1.4	3.2	6.6	3.0	2.1	6.8
2007 Jan	1.7	1.7	6.8	1.4	1.4	1.8	5.0	1.3	1.4	1.8	3.0	8.4	2.9	1.9	7.1
Feb	1.7	1.8	4.6	1.2	1.7	1.9	4.6	1.2	1.2	1.9	3.0	9.0	2.6	2.1	7.2
Mar	1.9	1.8	4.4	1.4	2.1	1.9	5.6	1.6	1.2	2.0	2.8	9.0	2.9	2.1	8.5
Apr	1.8	1.8	4.4	1.6	2.7	1.7	5.6	1.5	1.3	2.0	2.6	8.7	2.9	1.8	8.8
May	1.9	1.3	4.5	1.9	2.4	1.7	5.9	1.3	1.2	2.0	2.6	8.4	2.7	1.9	7.8
Jun	1.9	1.3	5.3	1.7	2.6	1.3	6.0	1.4	1.3	2.0	2.6	8.5	2.8	1.9	8.9
Jul	2.0	1.3	6.8	2.3	2.5	1.1	6.5	1.6	1.2	2.0	2.7	8.3	2.7	1.7	9.5
Aug	1.7	1.2	9.3	2.2	2.6	0.9	6.1	1.3	1.3	2.0	2.7	7.1	2.3	1.7	10.2
Sep	2.1	1.4	11.0	2.3	2.8	1.2	7.5	1.7	1.6	2.7	2.9	6.4	2.9	1.7	11.5
Oct	2.9	2.2	10.6	2.7	4.0	1.8	8.7	1.8	2.1	2.7	3.0	6.9	3.0	2.3	13.2
Nov	3.2	2.9	11.4	3.2	5.1	2.5	9.3	2.2	2.6	3.3	3.9	7.2	3.5	2.6	13.7
Dec	3.5	3.1	11.6	3.7	5.5	2.4	9.7	1.9	2.8	3.1	3.9	7.4	3.2	2.8	14.0
2008 Jan	3.1	3.5	11.7	4.1	7.9	3.0	11.3	3.5	3.2	2.9	3.9	7.4	3.1	3.1	15.6
Feb	3.1*	3.6	12.2	4.7	7.6	3.3	11.5	3.3	3.2	2.9	4.5	6.7	3.5	3.1	16.5

	Lithuania	Luxembourg	Malta	Netherlands	Poland	Portugal	Romania	Slovakia	Slovenia	Spain	Sweden	United Kingdom ¹	EICP ² EU 25 average ³	EICP ² EU 27 average ³	Monetary Union Area average ⁴
	D7RT	D7SU	D7RU	D7SV	D7RV	D7SX	GHY7	D7RW	D7RX	D7SY	D7SZ	D7G7	D7RY	GJ2E	D7SR
2005	2.7	3.8	2.5	1.5	2.2	2.1	9.1	2.8	2.5	3.4	0.8	2.1	2.2	..	2.2
2006	3.8	3.0	2.6	1.7	1.3	3.0	6.6	4.3	2.5	3.6	1.5	2.3	2.2	..	2.2
2007	5.8	2.7	0.7	1.6	2.6	2.4	4.9	1.9	3.8	2.8	1.7	2.3	..	2.3	..
2006 Feb	3.4	3.9	2.3	1.4	0.9	3.0	8.6	4.3	2.3	4.1	1.1	2.0	2.2	..	2.3
Mar	3.1	3.7	2.9	1.4	0.9	3.8	8.5	4.3	2.0	3.9	1.5	1.8	2.1	..	2.2
Apr	3.4	3.5	3.5	1.8	1.2	3.7	7.0	4.4	2.8	3.9	1.8	2.0	2.3	..	2.5
May	3.6	3.6	3.5	1.8	1.5	3.7	7.3	4.8	3.4	4.1	1.9	2.2	2.4	..	2.5
Jun	3.7	3.9	3.3	1.8	1.5	3.5	7.2	4.5	3.0	4.0	1.9	2.5	2.4	..	2.5
Jul	4.4	3.4	3.6	1.7	1.4	3.0	6.2	5.0	1.9	4.0	1.8	2.4	2.4	..	2.4
Aug	4.3	3.1	3.0	1.9	1.7	2.7	6.1	5.0	3.1	3.8	1.6	2.5	2.3	..	2.3
Sep	3.3	2.0	3.1	1.5	1.4	3.0	5.5	4.5	2.5	2.9	1.2	2.4	1.9	..	1.7
Oct	3.7	0.6	1.7	1.3	1.1	2.6	4.8	3.1	1.5	2.6	1.2	2.4	1.8	..	1.6
Nov	4.4	1.8	0.9	1.6	1.3	2.4	4.7	3.7	2.4	2.7	1.5	2.7	2.1	..	1.9
Dec	4.5	2.3	0.8	1.7	1.4	2.5	4.9	3.7	3.0	2.7	1.4	3.0	2.1	..	1.9
2007 Jan	4.0	2.3	1.2	1.2	1.6	2.6	4.1	2.2	2.8	2.4	1.6	2.7	..	2.1	1.8
Feb	4.4	1.8	0.8	1.4	1.9	2.3	3.9	2.0	2.3	2.5	1.7	2.8	..	2.2†	1.8
Mar	4.8	2.4	0.5	1.9	2.4	2.4	3.7	2.1	2.6	2.5	1.6	3.1	..	2.3	1.9
Apr	4.9	2.5	-1.1	1.9	2.2	2.8	3.8	2.0	2.9	2.5	1.6	2.8	..	2.2	1.9
May	5.0	2.3	-1.0	2.0	2.3	2.4	3.9	1.5	3.1	2.4	1.2	2.5	..	2.1	1.9
Jun	5.0	2.3	-0.6	1.8	2.6	2.4	3.9	1.5	3.8	2.5	1.3	2.4	..	2.2	1.9
Jul	5.1	2.0	-0.2	1.4	2.5	2.3	4.1	1.2	4.0	2.3	1.4	1.9	..	2.0	1.8
Aug	5.6	1.9	0.6	1.1	2.1	1.9	5.0	1.2	3.4	2.2	1.2	1.8	..	1.9	1.7
Sep	7.1	2.5	0.9	1.3	2.7	2.0	6.1	1.7	3.6	2.7	1.6	1.8	..	2.3	2.1
Oct	7.6	3.6	1.6	1.6	3.1	2.5	6.9	2.4	5.1	3.6	1.9	2.1	..	2.7	2.6
Nov	7.9	4.0	2.9	1.8	3.7	2.8	6.8	2.3	5.7	4.1	2.4	2.1	..	3.1	3.1
Dec	8.2	4.3	3.1	1.6	4.2	2.7	6.7	2.5	5.7	4.3	2.5	2.1	..	3.2	3.1
2008 Jan	10.0	4.2	3.8	1.8	4.4	2.9	7.3	3.2	6.4	4.4	3.0	2.2	..	3.4	3.2
Feb	10.9	4.2	4.0	2.0	4.6	2.9	8.0	3.4	6.4	4.4	2.9	2.5	..	3.4 ⁵	3.6

Key: - zero or negligible .. Not available * Provisional

† Date of earliest revision † Estimated

1 Published as the CPI in the UK.

2 The EICP (European Index of Consumer Prices) is the official EU aggregate. It covers 15 member states until April 2004, 25 member states from May 2004, and 27 members from Jan 2007, the new member states being integrated using a chain index formula.

The EU 25 annual average for 2004 is calculated from the EU 15 average from January to April and the EU 25 average from May to December.

3 The coverage of the European Union was extended to include Cyprus, Czech Republic, Estonia, Hungary, Latvia, Lithuania, Malta, Poland, Slovakia and Slovenia from 1 May 2004 and Bulgaria and Romania from 1 Jan 2007.

4 The coverage of the Monetary Union Area index was extended to include Greece with effect from Jan 2001.

5 The EU 27 average includes a Eurostat estimate for the United Kingdom rather than the actual United Kingdom data published within this release.

Sources: National Statistics; Eurostat

	Weights	Index (January 1987=100)						Percentage change over 12 months						Percentage change over 1 month	
		2008	2007		2007		2008		2007		2007		2008		2008 Feb
			2007 Sep	2007 Oct	2007 Nov	2007 Dec	2008 Jan	2008 Feb	2007 Sep	2007 Oct	2007 Nov	2007 Dec	2008 Jan	2008 Feb	
ALL ITEMS	1 000	208.0	208.9	209.7	210.9	209.8	211.4	3.9	4.2	4.3	4.0	4.1	4.1	0.8	
Food and catering	158	185.2	187.3	188.8	190.2	190.2	191.0	4.0	4.6	4.8	5.3	5.7	5.4	0.4	
Alcohol and tobacco	86	258.2	257.7	257.3	256.9	258.0	260.2	3.6	3.2	3.1	3.0	2.7	3.1	0.9	
Housing and household expenditure	417	251.3	251.9	253.0	254.8	252.6	255.5	6.5	6.2	6.0	5.0	5.0	5.1	1.1	
Personal expenditure	83	133.7	134.1	134.3	134.0	130.7	132.0	0.5	0.5	0.4	0.8	0.5	0.5	1.0	
Travel and leisure	256	183.7	184.7	185.4	186.8	186.7	187.2	1.4	2.8	3.1	3.2	3.3	3.2	0.3	
Consumer durables ¹	104	93.7	92.8	93.2	94.8	89.8	91.2	-1.2	-1.0	-1.4	-2.0	-1.4	-1.0	1.6	
Seasonal food	20	153.2	158.0	159.0	160.5	159.9	157.0	5.9	8.0	4.8	6.4	7.8	4.3	-1.8	
Food excluding seasonal	91	167.0	168.7	170.6	172.1	172.2	173.8	3.9	4.4	5.4	6.0	6.4	6.6	0.9	
All items excluding seasonal food	980	209.4	210.2	211.0	212.2	211.1	212.8	3.9	4.2	4.2	4.0	4.0	4.1	0.8	
All items excluding food	889	215.5	216.2	216.9	218.0	215.6	218.5	3.9	4.2	4.2	3.8	3.8	3.8	0.8	
All goods	474	157.7	158.1	159.3	160.4	158.8	160.0	1.5	2.4	2.8	2.8	3.3	3.3	0.8	
All services	372	258.4	259.9	259.9	261.2	261.9	264.6	3.6	3.2	2.7	2.8	2.8	3.6	1.0	
Other indices															
All items excluding:															
mortgage interest payments (RPIX)	940	200.8	201.6	202.4	203.5	202.7	204.3	2.8	3.1	3.2	3.1	3.4	3.7	0.8	
housing	746	183.5	184.3	185.1	186.3	185.2	187.0	2.2	2.6	2.6	2.5	2.9	3.3	1.0	
mortgage interest payments and indirect taxes (RPIY) ²		191.6	192.3	193.2	194.4	193.5	195.2	2.8	3.0	3.0	3.1	3.3	3.6	0.9	
mortgage interest payments and council tax	901	197.7	198.5	199.3	200.5	199.7	201.3	2.8	3.1	3.1	3.1	3.4	3.7	0.8	
mortgage interest payments and depreciation ³	885	193.8	194.6	195.4	196.6	195.7	197.3	2.4	2.8	2.8	2.8	3.1	3.5	0.8	
Food	111	165.0	167.4	169.1	170.6	170.5	171.3	4.2	5.1	5.3	6.1	6.6	6.1	0.5	
Bread	5	180.3	181.7	189.1	195.9	194.5	196.9	8.1	8.9	11.6	14.9	14.3	15.1	1.2	
Cereals	4	149.1	149.0	152.7	153.2	153.2	154.8	2.9	3.7	5.5	5.1	6.9	6.5	1.0	
Biscuits and cakes	6	172.2	179.4	180.6	183.6	183.4	186.1	1.9	6.2	6.0	7.1	7.0	8.3	1.5	
Beef	4	139.8	139.6	140.1	140.1	141.2	145.9	-1.3	-2.6	-1.6	-1.1	-1.5	3.0	3.3	
Lamb	2	186.0	183.3	183.1	186.7	187.3	187.3	-1.9	-3.0	-2.8	-1.9	-1.1	-0.7	-	
of which home-killed lamb	1	189.9	185.8	182.6	188.0	187.0	186.9	-1.0	-2.0	-4.5	-3.3	-3.3	-0.9	-0.1	
imported lamb	1	178.4	177.0	179.7	181.4	183.5	183.8	-2.8	-4.0	-1.0	-0.6	1.1	-0.5	0.2	
Pork	1	160.6	160.2	159.3	162.4	164.2	164.1	3.2	0.3	2.0	3.6	3.1	4.2	-0.1	
Bacon	2	176.7	190.0	188.9	191.2	190.7	190.9	-4.3	1.5	-0.5	0.6	0.5	0.5	0.1	
Poultry	4	110.4	116.9	118.9	119.4	117.6	119.2	3.4	6.7	9.6	8.7	9.9	6.0	1.4	
Other meat	7	148.6	150.4	150.6	152.0	151.3	151.5	0.4	1.7	1.5	1.5	2.0	1.7	0.1	
Fish	4	174.8	178.4	179.0	176.6	180.9	179.0	4.3	5.5	6.0	3.9	6.3	3.1	-1.1	
of which fresh fish	2	188.9	194.6	193.2	190.4	196.3	187.6	4.6	6.3	6.1	5.4	9.8	0.8	-4.4	
processed fish	2	161.4	163.2	165.6	163.6	166.4	170.2	4.0	4.7	6.0	2.5	2.7	5.3	2.3	
Butter	1	199.8	203.5	230.4	235.2	236.8	236.9	15.2	17.2	32.6	35.1	36.2	36.3	-	
Oils and fats	1	154.5	156.2	154.1	153.7	154.1	153.4	7.8	7.9	5.7	5.5	5.5	6.2	-0.5	
Cheese	3	182.0	185.2	191.5	196.1	193.6	201.1	3.5	5.4	8.8	11.2	9.7	15.6	3.9	
Eggs	1	197.0	214.0	231.3	233.0	232.8	234.2	17.2	26.2	35.7	30.2	30.3	30.8	0.6	
Milk, fresh	5	217.8	219.2	220.7	220.0	220.3	219.8	15.7	16.0	16.9	16.4	16.6	16.7	-0.2	
Milk products	4	156.0	156.5	161.5	164.7	165.2	166.5	5.5	6.4	9.3	12.0	13.9	14.7	0.8	
Tea	1	160.4	161.6	160.1	156.1	155.4	164.2	-1.2	-0.6	-0.8	-3.3	-1.2	2.2	5.7	
Coffee and other hot drinks	1	126.1	122.6	125.3	125.4	124.0	126.0	0.9	-2.1	1.4	-0.4	1.3	1.0	1.6	
Soft drinks	12	200.3	200.7	199.5	199.9	200.2	202.7	3.5	3.5	3.0	3.1	3.7	3.0	1.2	
Sugar and preserves	1	163.6	164.5	166.8	166.5	167.9	168.4	3.3	3.8	4.3	3.7	4.1	3.3	0.3	
Sweets and chocolates	10	201.6	201.3	203.3	206.2	207.2	207.0	4.0	4.1	5.3	6.7	6.7	5.8	-0.1	
Potatoes	5	162.5	162.5	166.5	167.4	168.7	172.9	7.1	5.0	3.4	3.3	6.1	4.1	2.5	
of which unprocessed potatoes	2	153.9	154.0	155.7	163.0	167.7	167.1	8.8	6.7	3.3	7.2	11.3	7.0	-0.4	
potato products	3	161.0	161.0	166.4	162.8	161.6	168.8	6.6	4.5	3.8	1.2	2.7	2.1	4.5	
Vegetables other than potatoes	9	151.0	152.5	152.7	156.3	157.5	156.5	10.8	9.9	6.0	9.8	7.7	5.4	-0.6	
of which fresh vegetables	7	137.1	137.6	136.9	140.2	141.1	139.8	12.0	10.9	5.5	9.9	7.0	4.0	-0.9	
processed vegetables	2	189.8	195.9	200.6	204.9	207.2	208.3	6.7	7.0	7.9	9.8	10.2	10.3	0.5	
Fruit	8	149.7	158.9	160.6	158.6	153.3	148.9	-0.3	4.5	1.5	1.0	4.0	0.7	-2.9	
of which fresh fruit	7	146.7	157.5	159.3	157.3	151.4	146.8	-0.5	5.8	1.7	1.3	5.1	1.7	-3.0	
processed fruit	1	153.0	150.7	151.6	149.6	148.9	145.8	1.2	-3.1	0.6	-1.1	-2.7	-4.9	-2.1	
Other foods	10	153.8	154.7	154.5	156.4	156.7	155.9	2.1	1.4	1.8	3.2	3.9	2.7	-0.5	
Catering	47	255.1	256.3	257.2	258.1	258.6	259.3	3.4	3.4	3.5	3.6	3.6	3.7	0.3	
Restaurant meals	26	248.8	250.4	250.8	251.3	251.3	252.1	3.3	3.4	3.3	3.2	2.9	3.2	0.3	
Canteen meals	4	318.2	318.0	319.0	318.4	319.8	321.4	5.5	5.1	4.6	4.5	4.1	4.3	0.5	
Take-aways and snacks	17	244.5	245.4	247.0	248.5	249.3	249.9	3.2	3.2	3.7	3.9	4.2	4.2	0.2	
Alcoholic drink	59	220.8	220.2	219.8	219.3	220.1	221.6	3.1	2.6	2.5	2.3	2.3	2.6	0.7	
Beer	31	242.0	241.1	241.1	241.3	240.6	242.9	3.7	3.0	2.8	2.6	2.5	3.1	1.0	
on sales	26	263.4	263.2	263.1	263.9	263.0	264.9	4.2	3.8	3.5	3.5	3.2	3.5	0.7	
off sales	5	149.6	146.2	146.8	145.1	145.1	148.2	1.0	-1.9	-1.1	-2.2	-1.6	0.2	2.1	
Wines and spirits	28	193.5	193.2	192.5	191.5	193.4	194.2	2.4	2.0	2.2	2.1	2.2	2.1	0.4	
on sales	15	245.2	245.2	245.2	245.4	245.6	246.2	3.4	3.2	2.9	2.8	2.7	2.7	0.2	
off sales	13	159.6	158.9	157.5	155.5	159.0	159.9	1.1	0.6	1.1	1.2	1.5	1.3	0.6	

Key: - zero or negligible

Index date for February: 12 February 2008

1 Consumer durables: Furniture, furnishings, electrical appliances and other household equipment, men's, women's and children's outerwear, footwear, audio-visual equipment, CDs and tapes, toys, photographic and sports goods.

2 The taxes excluded are council tax, VAT, duties, vehicle excise duty, insurance tax and air passenger duty. There are no weights available for RPIY.

3 This series has been constructed using the index for all items excluding mortgage interest payments prior to February 1995.

continued

	Weights	Index (January 1987=100)						Percentage change over 12 months						Percentage change over 1 month	
		2008	2007		2007		2008		2007		2007		2008		2008 Feb
			Sep	Oct	Nov	Dec	Jan	Feb	Sep	Oct	Nov	Dec	Jan	Feb	
Tobacco	27	364.2	364.3	364.1	363.6	366.1	370.6	4.7	4.7	4.6	4.5	3.4	4.2	1.2	
Cigarettes	24	372.4	372.5	372.3	371.7	374.3	378.9	4.8	4.8	4.7	4.5	3.5	4.3	1.2	
Other tobacco	3	288.6	288.8	288.9	288.6	289.9	293.8	4.3	4.3	4.4	4.2	2.8	3.6	1.3	
Housing	254	338.4	339.6	340.6	341.5	340.6	341.2	9.9	9.9	9.9	8.8	7.9	6.8	0.2	
Rent	59	289.9	291.2	291.7	291.6	293.1	293.1	3.3	3.7	3.7	3.6	3.8	3.7	-	
Mortgage interest payments	60	409.5	411.3	413.9	416.5	406.5	408.9	24.9	24.5	24.4	19.8	15.6	11.8	0.6	
Depreciation (Jan 1995 = 100)	55	302.9	304.3	305.5	305.5	306.3	305.3	9.7	9.3	9.3	8.7	8.3	6.9	-0.3	
Council tax and rates	39	292.0	292.0	292.0	292.0	292.0	292.0	4.0	4.0	4.0	4.0	4.0	4.0	-	
Water and other charges	12	377.2	377.2	377.2	377.2	377.2	377.2	6.5	6.5	6.5	6.5	6.5	6.5	-	
Repairs and maintenance charges	12	331.1	333.5	334.6	335.4	339.5	339.7	5.0	5.2	5.4	5.2	4.8	4.6	0.1	
Do-it-yourself materials	9	167.3	167.3	167.1	168.4	170.8	171.9	3.9	4.1	3.7	3.7	4.9	4.8	0.6	
Dwelling insurance and ground rent	8	292.4	291.7	292.1	301.7	309.5	314.7	4.2	4.5	4.3	7.9	9.9	11.2	1.7	
Fuel and light	33	206.1	206.3	208.1	208.3	209.7	231.4	-1.0	-3.8	-5.0	-6.5	-5.8	3.5	10.3	
Coal and solid fuels	1	200.8	206.5	210.5	214.7	217.3	218.3	7.0	4.7	5.5	7.6	8.8	9.0	0.5	
Electricity	16	195.9	195.8	195.8	195.8	196.6	217.4	1.1	-1.5	-3.4	-4.5	-4.6	5.2	10.6	
Gas	13	211.8	211.0	211.1	211.2	211.7	239.4	-3.9	-8.7	-11.6	-13.2	-13.2	-2.2	13.1	
Oil and other fuels	3	276.3	285.3	319.1	320.4	335.4	336.1	3.4	14.4	33.0	28.5	42.6	40.0	0.2	
Household goods	66	151.7	149.6	151.0	156.0	148.1	150.8	1.9	2.4	2.1	0.9	2.6	2.5	1.8	
Furniture	23	177.0	171.1	175.7	187.0	168.0	171.9	4.5	4.3	4.3	-0.4	3.4	4.2	2.3	
Furnishings	12	163.8	161.9	159.0	168.0	159.7	166.9	3.5	2.4	0.4	3.4	3.7	4.2	4.5	
Electrical appliances	7	73.6	73.1	73.4	72.7	70.6	69.8	-6.8	-2.1	-1.1	-0.8	-0.8	-3.9	-1.1	
Other household equipment	4	145.2	145.8	145.2	146.7	144.4	148.6	2.6	3.9	1.9	3.5	3.9	4.2	2.9	
Household consumables	13	161.1	161.4	162.0	162.2	162.2	162.8	0.6	0.8	0.7	0.6	0.4	0.2	0.4	
Pet care	7	175.4	175.8	178.9	179.9	179.9	180.7	2.5	2.6	4.4	4.7	5.6	4.6	0.4	
Household services	64	198.0	201.3	201.8	202.0	202.8	202.0	3.4	2.4	2.9	2.9	3.3	3.1	-0.4	
Postage	1	212.7	212.7	212.7	212.7	212.7	212.7	6.2	6.2	6.2	6.2	6.2	6.2	-	
Telephones, telemessages, etc	21	85.5	85.1	85.2	85.3	84.9	84.0	-2.6	-4.0	-3.6	-3.3	-3.2	-3.2	-1.1	
Domestic services	13	305.9	307.9	309.3	309.7	311.9	311.9	4.2	4.4	4.6	4.4	3.9	3.9	-	
Fees and subscriptions	29	298.9	310.4	311.1	311.4	314.3	314.1	7.6	6.4	7.0	7.0	8.0	7.5	-0.1	
Clothing and footwear	42	94.5	94.5	94.7	94.0	89.8	91.0	-1.0	-1.5	-1.7	-1.1	-1.6	-1.5	1.3	
Men's outerwear	8	96.1	96.4	96.9	96.8	92.1	93.4	-1.7	-1.1	-1.3	-0.7	-0.4	-0.6	1.4	
Women's outerwear	15	67.9	67.3	67.6	66.3	62.3	63.2	-2.7	-4.7	-4.2	-3.9	-4.4	-4.4	1.4	
Childrens' outerwear	5	89.9	91.5	91.7	92.2	88.6	88.9	1.0	2.0	1.3	1.5	1.4	1.9	0.3	
Other clothing	6	150.9	150.1	150.7	150.6	148.0	148.0	0.3	0.3	-0.3	-0.2	-0.1	-0.8	-	
Footwear	8	110.7	111.1	110.8	109.9	105.9	108.5	0.4	0.7	0.4	1.5	-0.8	0.2	2.5	
Personal goods and services	41	216.1	217.3	217.4	218.1	217.8	219.1	2.5	2.9	2.9	2.9	2.8	2.8	0.6	
Personal articles	11	140.7	140.2	140.8	141.7	140.4	141.8	2.6	2.4	2.8	2.6	2.9	2.8	1.0	
Chemists goods	15	192.4	194.2	193.4	193.9	193.4	194.9	0.9	1.5	1.2	1.6	1.3	1.4	0.8	
Personal services	15	373.2	376.8	377.8	378.0	380.6	381.1	4.4	4.9	4.9	4.8	4.6	4.6	0.1	
Motoring expenditure	133	188.6	190.0	192.5	193.3	194.9	194.5	1.1	3.5	4.7	4.7	5.1	5.1	-0.2	
Purchase of motor vehicles	49	101.8	101.4	101.8	100.8	101.1	100.8	-3.5	-3.6	-3.0	-3.5	-4.2	-4.7	-0.3	
Maintenance of motor vehicles	19	311.8	312.4	313.3	314.3	319.6	320.4	5.2	4.8	4.3	4.3	5.2	5.4	0.3	
Petrol and oil	43	276.7	284.2	295.1	301.4	304.8	304.5	3.0	11.7	16.5	16.4	19.0	20.3	-0.1	
Vehicle tax and insurance	22	298.5	299.6	299.4	300.7	302.4	301.0	5.4	6.1	4.4	5.4	4.6	3.8	-0.5	
Fares and other travel costs	20	242.7	244.3	237.0	249.9	242.0	245.3	6.0	7.1	4.8	6.6	5.4	3.8	1.4	
Rail fares	5	264.8	263.3	263.3	263.2	272.0	273.5	6.8	6.3	4.9	5.5	5.7	4.4	0.6	
Bus and coach fares	4	277.0	274.5	275.3	277.0	282.7	284.0	7.7	5.9	5.3	5.6	4.7	4.8	0.5	
Other travel costs	11	210.7	214.5	203.0	222.5	205.7	209.9	4.7	7.6	4.5	6.9	5.5	3.1	2.0	
Leisure goods	38	89.1	88.9	88.6	89.1	87.9	89.1	-3.0	-2.5	-3.3	-3.4	-3.4	-2.7	1.4	
Audio-visual equipment	8	14.2	14.1	13.9	13.9	13.3	13.2	-17.4	-16.1	-17.8	-17.8	-20.4	-20.0	-0.8	
CDs and tapes	4	100.7	98.4	100.4	102.9	98.1	100.7	3.5	1.0	1.2	1.1	-3.2	0.8	2.7	
Toys, photographic and sports goods	10	87.1	87.3	86.7	86.8	86.0	85.4	-2.9	-2.6	-2.7	-2.9	-3.3	-3.2	-0.7	
Books and newspapers	10	262.5	263.1	261.5	262.9	264.2	274.7	3.9	4.4	3.3	3.3	6.9	6.9	4.0	
Gardening products	6	144.9	145.1	145.1	146.4	147.0	150.0	0.9	1.7	0.6	0.8	1.4	1.1	2.0	
Leisure services	65	278.1	279.4	279.7	280.3	280.1	280.8	3.3	3.3	3.3	3.3	3.1	3.1	0.2	
Television licences and rentals	11	167.7	169.7	169.7	169.0	169.0	169.0	1.8	2.2	2.2	2.1	1.7	1.7	-	
Entertainment and other recreation	16	379.8	379.5	379.6	380.7	381.1	381.8	5.9	5.0	5.4	5.1	6.0	5.1	0.2	
Foreign holidays (Jan 1993 = 100)	31	173.5	174.5	174.8	175.3	175.2	175.9	2.6	2.9	2.6	2.9	2.2	2.6	0.4	
UK holidays (Jan 1994 = 100)	7	171.8	171.9	172.0	172.0	172.2	172.2	3.8	3.4	3.4	3.1	2.8	2.8	-	

Key: - zero or negligible

Source: National Statistics

9 RPI goods and services¹: the latest three years

Percentage change over 12 months

	Goods components					Services components				All services
	Food	Alcohol & tobacco	Petrol & oil ²	Other goods ³	All goods	Rent	Utilities ⁴	"Shop" services ⁵	"Non-shop" services ⁶	
Weights										
	CZGZ	CBVW	DOHB	DOHC	DOHD	CZXD	DOHE	DOHF	DOHG	DOHH
2008	111	86	46	231	474	59	68	133	112	372
Monthly										
	CCYY	CZBK	DOGQ	DOGI	DOGD	CZCQ	DOGF	DOGG	DOGH	DOGE
2005 Feb	0.8	3.0	6.4	-2.9	-0.4	3.1	5.9	4.3	2.3	3.8
Mar	1.4	2.4	8.1	-2.2	0.2	3.1	5.4	4.3	2.6	3.8
Apr	0.8	2.6	11.4	-2.5	0.1	3.6	5.8	4.3	2.7	4.0
May	1.3	2.7	5.5	-2.5	-0.1	3.6	5.7	4.3	3.0	4.1
Jun	2.0	2.7	6.6	-2.3	0.2	3.5	5.8	4.3	2.7	4.0
Jul	1.4	2.7	11.3	-1.7	0.7	3.8	5.8	4.3	2.7	4.0
Aug	1.7	2.5	13.7	-2.0	0.8	3.8	5.9	4.1	2.0	3.7
Sep	1.5	2.5	18.4	-1.9	1.1	3.8	6.5	4.4	2.0	3.9
Oct	1.0	2.7	14.0	-1.7	0.9	3.2	7.4	4.5	2.1	4.1
Nov	1.3	2.9	8.6	-1.4	0.7	3.2	7.7	4.6	1.8	4.1
Dec	1.1	2.9	8.0	-1.3	0.7	3.2	7.3	4.6	0.6	3.7
2006 Jan	0.8	2.8	13.6	-1.4	1.0	3.0	7.2	4.3	1.3	3.8
Feb	0.8	2.5	12.9	-1.1	1.1	3.0	7.4	4.2	1.2	3.8
Mar	-0.5	3.0	10.1	-1.2	0.6	3.0	8.6	4.1	1.7	4.1
Apr	0.2	2.7	9.6	-1.3	0.7	2.8	9.9	4.2	2.3	4.6
May	0.9	2.7	13.8	-0.8	1.4	2.8	11.7	4.1	1.5	4.6
Jun	1.5	3.2	12.4	-0.5	1.6	2.9	12.9	4.1	1.8	5.0
Jul	2.7	3.0	10.7	-0.9	1.5	3.0	13.8	4.1	1.5	5.0
Aug	2.9	3.4	7.6	-0.2	1.8	3.0	13.9	4.0	1.7	5.1
Sep	3.5	3.4	-3.4	0.4	1.2	2.9	14.2	4.0	2.3	5.3
Oct	4.2	3.3	-7.6	-	0.8	2.9	15.1	4.2	3.3	5.8
Nov	4.5	3.2	-4.6	0.1	1.2	3.0	15.0	4.1	3.9	6.0
Dec	4.1	3.2	0.6	0.4	1.8	3.0	15.0	4.1	4.0	6.1
2007 Jan	3.7	3.6	-2.6	-0.3	1.1	3.3	14.2	4.2	4.6	6.1
Feb	4.0	4.0	-4.3	-	1.2	3.2	13.7	4.3	5.4	6.3
Mar	5.1	4.1	-1.7	0.5	2.0	3.2	12.2	4.4	4.8	5.9
Apr	5.6	4.5	-1.7	0.6	2.1	3.1	8.5	4.1	4.2	4.9
May	4.8	4.1	-2.0	0.6	1.9	3.2	5.3	4.1	5.1	4.6
Jun	4.8	3.7	0.3	0.8	2.2	3.3	3.0	4.2	5.0	4.1
Jul	3.1	3.7	-1.8	-0.2	1.2	3.3	1.3	3.9	5.1	3.7
Aug	3.4	3.5	-2.4	-0.5	0.9	3.2	1.3	4.2	5.8	4.0
Sep	4.2	3.6	2.9	-0.6	1.5	3.3	0.3	4.1	5.0	3.6
Oct	5.1	3.2	11.7	-0.5	2.4	3.7	-2.0	4.1	5.1	3.2
Nov	5.3	3.1	17.4	-0.6	2.8	3.7	-3.1	4.2	4.5	2.7
Dec	6.1	3.0	17.0	-0.9	2.8	3.6	-3.7	4.1	5.3	2.8
2008 Jan	6.6	2.7	20.2	-0.6	3.3	3.8	-3.6	4.2	5.0	2.8
Feb	6.1	3.1	21.4	-0.6	3.3	3.7	0.9	4.2	4.7	3.6

Key: - zero or negligible

1 All components of the RPI are included in the above breakdown with the exception of mortgage interest payments, council tax and depreciation.

2 Including fuel oil.

3 The 'other goods' category comprises DIY materials, coal & solid fuels, household goods, clothing & footwear, personal articles, chemists goods, purchase of motor vehicles and leisure goods.

4 The 'utilities' category comprises water, electricity, gas, postage, telephone charges and rail fares.

5 The 'shop services' category comprises catering, repairs & maintenance charges, domestic services, personal services, maintenance of motor vehicles, TV licence & rentals and entertainment & recreation charges.

6 The 'non-shop services' category comprises dwelling insurance & ground rent, fees and subscriptions, vehicle tax and insurance, bus & coach fares, other travel costs, foreign holidays and UK holidays.

Source: National Statistics

10 A breakdown of the differences between CPI and RPI

		Difference between annual rates CPI - RPI		Breakdown of differences (unrounded figures) ¹					
		rounded figures	unrounded figures	housing components excluded from CPI			other differences in coverage of goods and services	formula effect ²	other differences including weights ³
		D7G2	D7G3	D7G4	D7G5	D7FU	D7FV	D7FW	D7FX
2003	Feb	-1.6	-1.60	-1.41	-0.20	-1.21	0.24	-0.43	-
	Mar	-1.6	-1.59	-1.28	-0.11	-1.17	0.18	-0.43	-0.07
	Apr	-1.7	-1.67	-1.44	-0.11	-1.32	0.12	-0.44	0.08
	May	-1.7	-1.73	-1.39	-0.12	-1.26	0.05	-0.44	0.05
	Jun	-1.8	-1.82	-1.32	-0.12	-1.20	-0.06	-0.46	0.01
	Jul	-1.8	-1.73	-1.24	-0.12	-1.13	-0.24	-0.43	0.19
	Aug	-1.5	-1.56	-1.08	0.01	-1.09	-0.31	-0.41	0.24
	Sep	-1.4	-1.35	-1.06	0.01	-1.07	0.01	-0.44	0.14
	Oct	-1.2	-1.29	-0.99	0.01	-0.99	0.04	-0.44	0.10
	Nov	-1.2	-1.17	-0.99	-0.02	-0.97	0.19	-0.43	0.07
	Dec	-1.5	-1.51	-1.11	-0.20	-0.91	-0.22	-0.42	0.23
	2004	Jan	-1.2	-1.19	-1.07	-0.21	-0.86	0.02	-0.42
Feb		-1.2	-1.23	-1.10	-0.21	-0.89	0.05	-0.43	0.26
Mar		-1.5	-1.47	-1.47	-0.48	-0.99	0.07	-0.41	0.34
Apr		-1.4	-1.36	-1.32	-0.50	-0.82	0.08	-0.43	0.30
May		-1.3	-1.30	-1.36	-0.50	-0.86	0.13	-0.44	0.38
Jun		-1.4	-1.46	-1.59	-0.69	-0.90	0.14	-0.43	0.42
Jul		-1.6	-1.66	-1.82	-0.88	-0.94	0.15	-0.42	0.43
Aug		-1.9	-1.89	-1.96	-1.03	-0.93	0.18	-0.47	0.36
Sep		-2.0	-1.97	-2.13	-1.18	-0.95	0.20	-0.45	0.42
Oct		-2.1	-2.07	-2.17	-1.19	-0.99	0.22	-0.46	0.34
Nov		-1.9	-1.98	-2.11	-1.19	-0.92	0.24	-0.47	0.36
Dec		-1.8	-1.84	-1.91	-1.00	-0.91	0.24	-0.49	0.32
2005	Jan	-1.6	-1.55	-1.94	-1.03	-0.92	0.23	-0.48	0.65
	Feb	-1.5	-1.50	-1.92	-1.03	-0.89	0.23	-0.51	0.69
	Mar	-1.3	-1.32	-1.64	-0.86	-0.79	0.22	-0.53	0.62
	Apr	-1.3	-1.22	-1.54	-0.86	-0.68	0.25	-0.52	0.59
	May	-1.0	-1.07	-1.43	-0.85	-0.58	0.27	-0.50	0.60
	Jun	-0.9	-0.87	-1.18	-0.67	-0.51	0.29	-0.52	0.54
	Jul	-0.6	-0.57	-0.89	-0.48	-0.40	0.31	-0.53	0.55
	Aug	-0.4	-0.37	-0.84	-0.48	-0.36	0.33	-0.49	0.64
	Sep	-0.2	-0.20	-0.43	-0.17	-0.27	0.30	-0.52	0.45
	Oct	-0.2	-0.17	-0.37	-0.17	-0.20	0.30	-0.52	0.42
	Nov	-0.3	-0.29	-0.36	-0.16	-0.21	0.27	-0.52	0.32
	Dec	-0.3	-0.30	-0.35	-0.16	-0.19	0.28	-0.51	0.29
2006	Jan	-0.5	-0.45	-0.29	-0.15	-0.14	0.30	-0.48	0.02
	Feb	-0.4	-0.39	-0.32	-0.15	-0.17	0.30	-0.51	0.14
	Mar	-0.6	-0.51	-0.36	-0.16	-0.20	0.32	-0.55	0.08
	Apr	-0.6	-0.52	-0.33	-0.14	-0.19	0.32	-0.51	-0.01
	May	-0.8	-0.72	-0.32	-0.11	-0.20	0.32	-0.54	-0.19
	Jun	-0.8	-0.75	-0.26	-0.09	-0.17	0.31	-0.52	-0.27
	Jul	-0.9	-0.86	-0.25	-0.09	-0.16	0.28	-0.54	-0.35
	Aug	-0.9	-0.95	-0.25	-0.08	-0.17	0.24	-0.54	-0.39
	Sep	-1.2	-1.22	-0.71	-0.48	-0.23	0.22	-0.56	-0.17
	Oct	-1.3	-1.23	-0.74	-0.49	-0.25	0.24	-0.55	-0.17
	Nov	-1.2	-1.20	-0.73	-0.48	-0.24	0.24	-0.55	-0.16
	Dec	-1.4	-1.46	-0.91	-0.68	-0.24	0.23	-0.56	-0.22
2007	Jan	-1.5	-1.53	-1.01	-0.72	-0.29	0.23	-0.59	-0.16
	Feb	-1.8	-1.78	-1.21	-0.91	-0.30	0.19	-0.55	-0.21
	Mar	-1.7	-1.75	-1.21	-0.90	-0.31	0.26	-0.57	-0.24
	Apr	-1.7	-1.77	-1.21	-0.91	-0.30	0.21	-0.60	-0.17
	May	-1.8	-1.79	-1.28	-0.94	-0.33	0.19	-0.59	-0.11
	Jun	-2.0	-2.04	-1.49	-1.13	-0.36	0.21	-0.64	-0.12
	Jul	-1.9	-2.00	-1.65	-1.17	-0.47	0.23	-0.54	-0.05
	Aug	-2.3	-2.29	-1.87	-1.38	-0.49	0.24	-0.57	-0.10
	Sep	-2.1	-2.21	-1.62	-1.15	-0.46	0.28	-0.60	-0.27
	Oct	-2.1	-2.15	-1.54	-1.12	-0.41	0.28	-0.60	-0.30
	Nov	-2.2	-2.20	-1.52	-1.12	-0.40	0.29	-0.59	-0.38
	Dec	-1.9	-1.95	-1.30	-0.91	-0.39	0.31	-0.55	-0.41
2008	Jan	-1.9	-1.87	-1.07	-0.67	-0.39	0.36	-0.59	-0.58
	Feb	-1.6	-1.61	-0.73	-0.47	-0.27	0.36	-0.59	-0.65

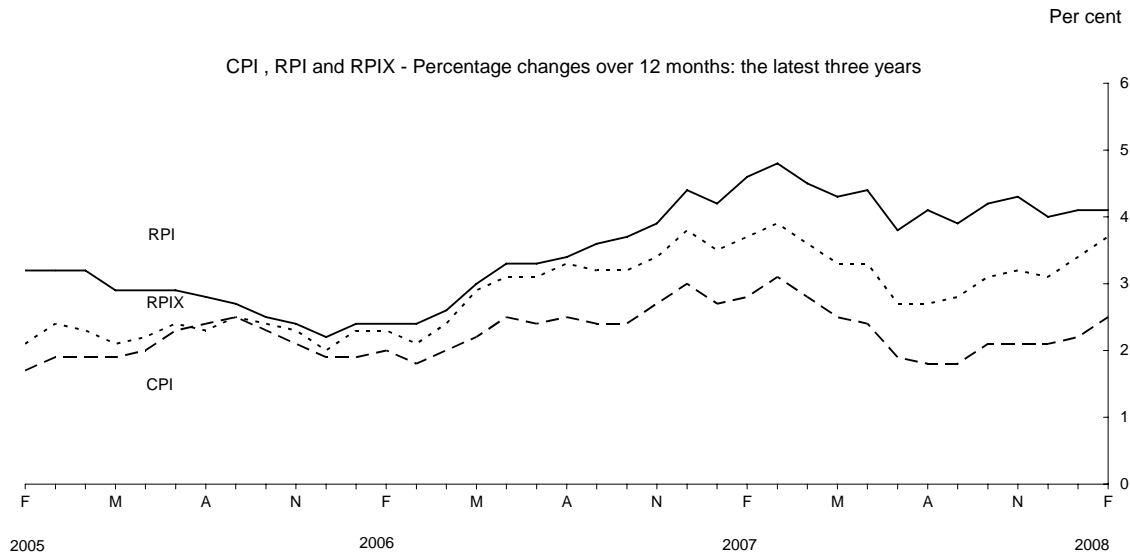
1 The differences due to housing, coverage and formula effect are all calculated independently and are not additive.

Source: National Statistics

2 Difference due to use of different formulae to aggregate prices at the most basic level.

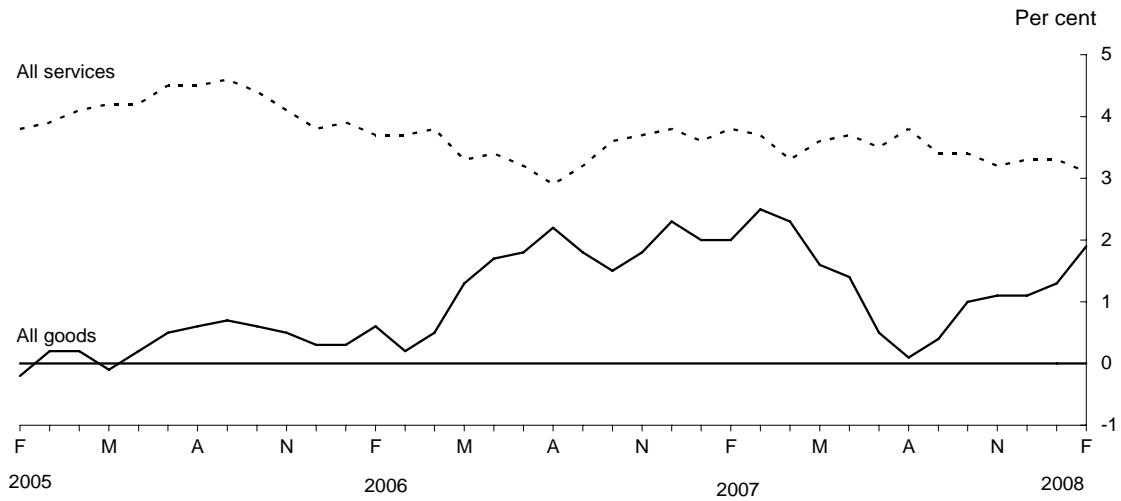
3 This difference is derived as a residual.

**Chart for Table 1 – February 2008
CPI RPI and Other Related Indices**



**Chart for Table 6 – February 2008
CPI Goods and Services**

CPI goods and services - Percentage changes over 12 months: the latest three years



**Chart for Table 9 – February 2008
RPI Goods and Services**

RPI goods and services - Percentage changes over 12 months: the latest three years

