

21 March 2006

Coverage
United Kingdom
Theme
The Economy

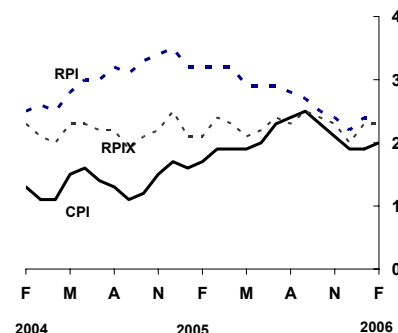
Consumer price indices February 2006

In the year to February, the consumer prices index (CPI) rose by 2.0 per cent, up from 1.9 per cent in January.

In the year to February, the all items retail prices index (RPI) rose by 2.4 per cent, unchanged from January.

Over the same period, the all items RPI excluding mortgage interest payments index (RPIX) rose by 2.3 per cent, unchanged from January.

CPI, RPI and RPIX 12-month percentage changes



Issued by
National Statistics
1 Drummond Gate
London SW1V 2QQ

Telephone
Press Office 020 7533 5725
Public Enquiries 0845 601 3034
CPI/RPI Enquiries 020 7533 5874
CPI/RPI recorded
message 020 7533 5866
E-mail cpi@ons.gov.uk

Statistician
Damon Wingfield 020 7533 5840
damon.wingfield@ons.gov.uk

Internet
www.statistics.gov.uk

Next publication date
20 April 2006

	Consumer prices index (CPI)		All items retail prices index (RPI)		All items RPI excluding mortgage interest payments (RPIX)	
	Index (2005 =100)	Per cent change over 12 months	Index (Jan 1987 =100)	Per cent change over 12 months	Index (Jan 1987 =100)	Per cent change over 12 months
2005 Sep	100.6	2.5	193.1	2.7	189.3	2.5
Oct	100.7	2.3	193.3	2.5	189.5	2.4
Nov	100.7	2.1	193.6	2.4	189.7	2.3
Dec	101.0	1.9	194.1	2.2	190.2	2.0
2006 Jan	100.5	1.9	193.4	2.4	189.4	2.3
Feb	100.9	2.0	194.2	2.4	190.1	2.3

Main contributions to the change in the 12-month rate¹

CPI

The only large upward effect on the CPI annual rate came from recreation and culture, due to large upward contributions from:

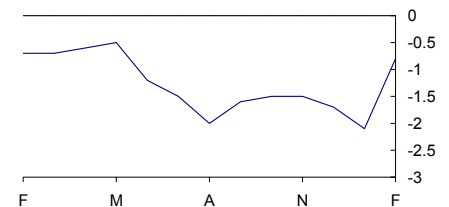
- Other recreational items, where prices for computer games increased in February in contrast to sales a year ago; and
- Newspapers, books and stationery, with price recoveries for hardback books in a number of outlets in February, following special offers a month earlier. A small upward effect also came from printer paper with prices falling by less than a year ago when there were half price sales at some outlets.

A small upward effect came from furniture, household equipment and routine maintenance, due to carpets and other floor coverings with prices for some carpets increasing in February compared with little change a year ago.

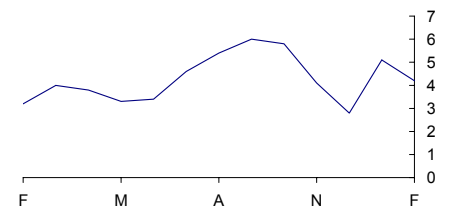
The only large downward effect on the CPI annual rate came from transport, mainly due to transport services. Air fares fell in February for the second month in succession. Reduced fares this year, particularly on domestic routes, were in contrast to price rises a year ago for both domestic and international travel. A small downward effect also came from fuels and lubricants. The average recorded price for a litre of petrol rose by 0.4p in February, to stand at 89.2p. This increase was less than in February 2005 when average prices rose by 0.6p per litre to 79.8p. Partially offsetting small upward contributions came from rail fares and sea fares.

A small downward effect came from alcoholic beverages and tobacco, with prices overall falling in February compared with rises a year ago.

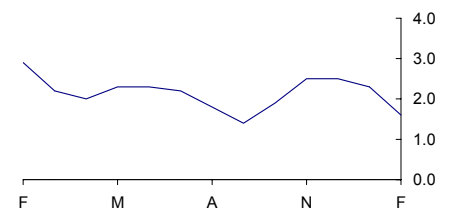
Recreation and Culture
CPI percentage changes over 12 months



Transport
CPI percentage changes over 12 months



Alcohol and tobacco
CPI percentage changes over 12 months



¹ The CPI and RPI use different classification systems. Background Note 18 shows how, for each of the two indices, the main categories contributing to changes in the 12-month rate relate to each other

RPI

The largest upward effect on the RPI annual rate came from leisure goods with a large upward contribution from toys, photographic and sports goods as prices for computer games rose in February in contrast to sales a year ago. Within leisure goods there were also small upward contributions from:

- Books and newspapers where, following sales last month on hardback books, prices in a number of outlets recovered this month; and
- Audio visual equipment, particularly for personal computers as prices increased in February compared with falls a year ago.

Another large upward effect on the change in the annual rate came from household goods, due to small upward contributions from:

- Household consumables, largely due to printer paper prices falling by less than a year ago; and
- Furnishings, with prices for most items, especially carpets, rising by more than a year ago.

A small upward contribution came from housing costs excluded from the CPI largely due to the house depreciation component. The smoothed ODPM house price index, used to calculate this component, rose in February by more than a year ago.

The largest downward contribution to the change in the all items RPI rate came from motoring costs with downward pressures from:

- Purchase of motor vehicles, with prices for second hand cars falling in February in contrast to rises a year ago; and
- Petrol and oil, where petrol prices rose by less than a year ago.

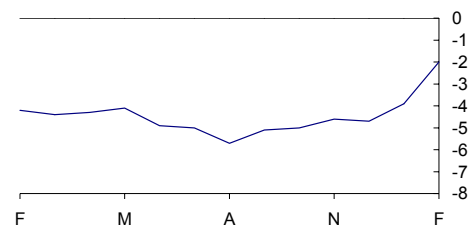
A small downward contribution also came from other travel costs, largely due to air fares.

Further small downward effects came from:

- Tobacco, where prices showed little change in February but rose a year ago; and
- Household services, largely due to fees and subscriptions, with premiums for house contents insurance falling by more than a year ago.

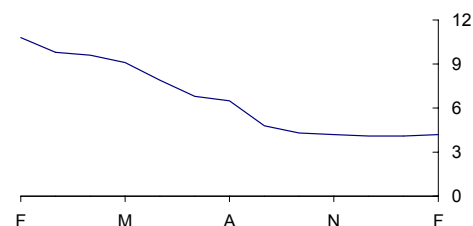
Leisure Goods

RPI percentage changes over 12 months



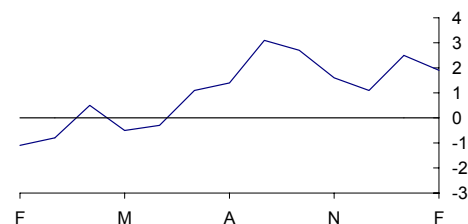
Housing

RPI percentage changes over 12 months

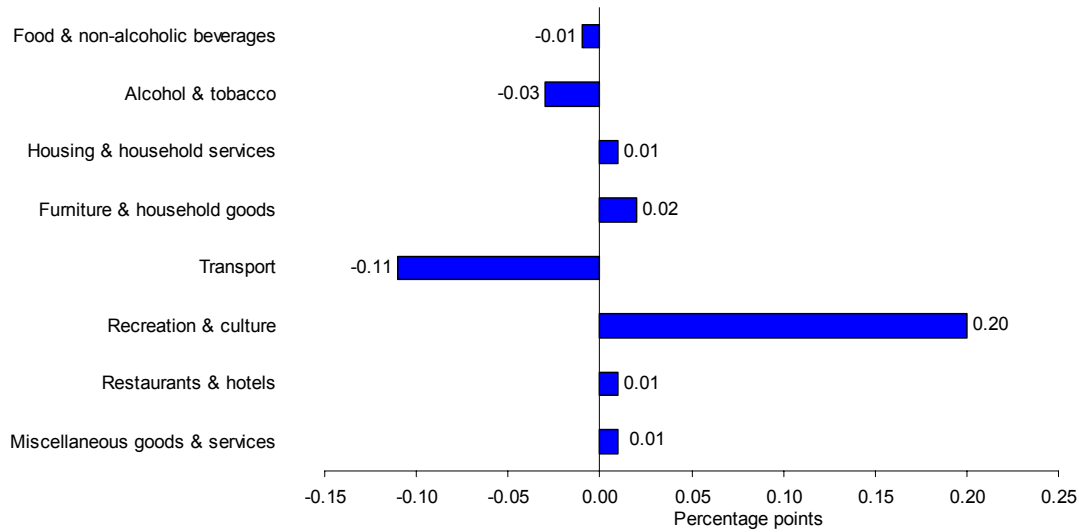


Motoring expenditure

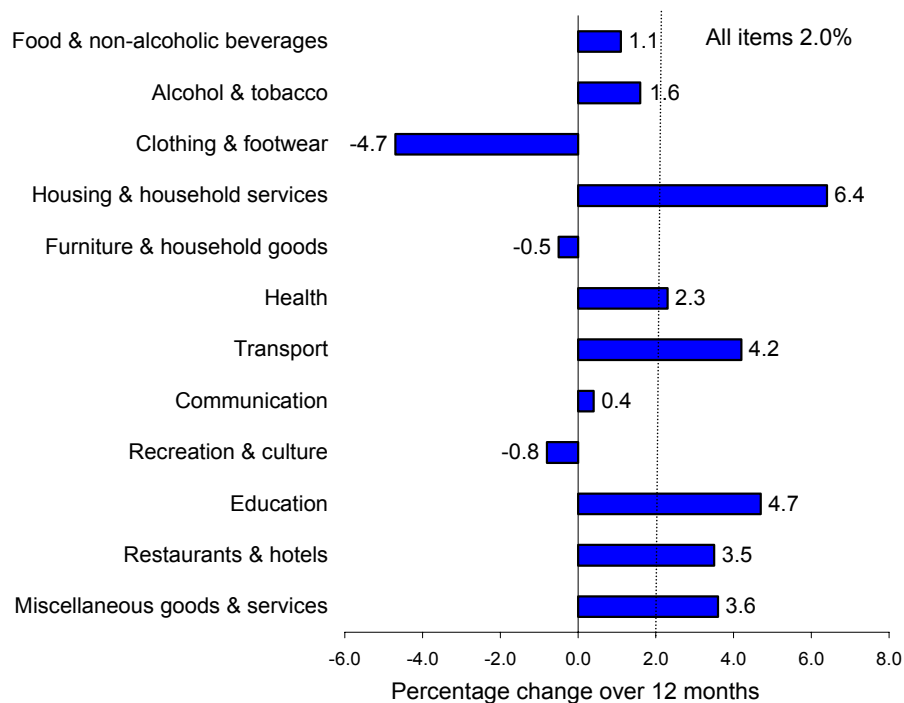
RPI percentage changes over 12 months



CPI main contributions¹ to the change in the all items 12-month rate between January 2006 and February 2006 (0.1 percentage points).

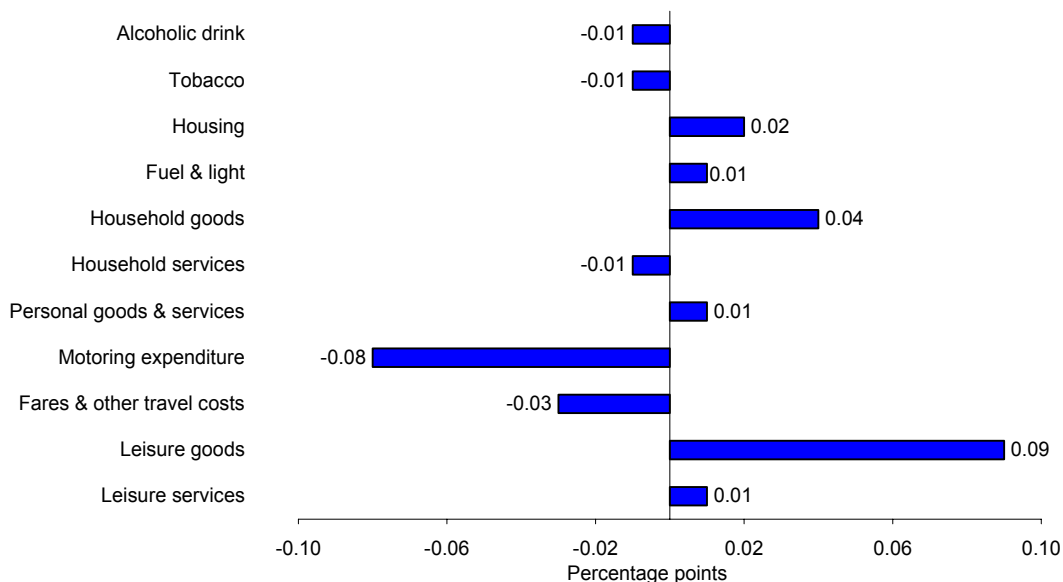


CPI comparison of the 12-month percentage changes

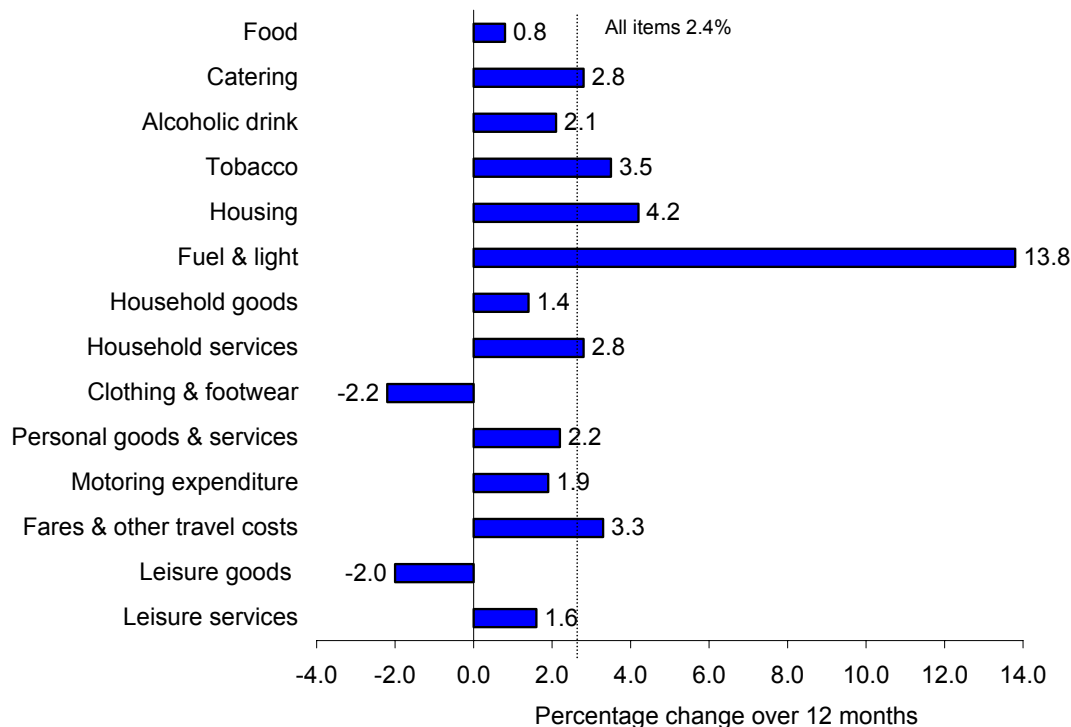


¹ Individual contributions to the change in the 12-month rate may not sum to the total due to rounding.

RPI main contributions¹ to the change in the all items 12-month rate between January 2006 and February 2006 (Unchanged).



RPI comparison of 12-month percentage changes



¹ Individual contributions to the change in the 12-month rate may not sum to the total due to rounding.

BACKGROUND NOTES

UK consumer price indices

1. The consumer prices index (CPI) is the main United Kingdom domestic measure of inflation for macroeconomic purposes. The uses of the retail prices index (RPI) include indexation of pensions, state benefits and index-linked gilts. Both measure the average change from month to month in the prices of consumer goods and services purchased in the UK, although there are differences in coverage and methodology. A detailed description of these differences is given in the paper entitled "*The New Inflation Target: the Statistical Perspective*". This paper is available on the National Statistics website:
www.statistics.gov.uk/StatBase/Product.asp?vlnk=10913 The differences are also summarised below in note 18. Prior to 10 December 2003, the CPI was published in the UK as the harmonised index of consumer prices (HICP).
2. Both the CPI and the RPI are compiled each month using the same underlying price data, based on a large and representative selection of around 650 individual goods and services for which price movements are measured in around 150 areas throughout the UK. Around 120,000 separate price quotations are used every month to compile the indices.
3. Detailed figures for the CPI and RPI can be found in *Focus on Consumer Price Indices* on the National Statistics website, together with this First Release and additional briefing notes on the latest published figures. Further information is available from the contact numbers on the front page of this release.
4. The CPI and RPI can be thought of as measuring the monthly cost of a very large shopping basket comprising all the different kinds of goods and services bought by consumers in the UK. As the prices of individual items in the basket vary over time, the total cost of the basket will change. The selection of goods and services that are priced to compile the CPI and RPI are reviewed annually. Changes to the basket this year, effective from the February indices, are described in an article published on the National Statistics website at:
<http://www.statistics.gov.uk/cci/article.asp?ID=1455>

The expenditure weights used to compile the indices are also updated each year. In line with usual practice, CPI class weights (table 3) were updated with effect from the January 2006 index, and the RPI section weights (table 8) are updated with effect from the February 2006 index.
5. A full description of the methodology used to construct the CPI and RPI is given in the *Consumer Price Indices Technical Manual 2005 edition*, which is available from the National Statistics website:
www.statistics.gov.uk/statbase/Product.asp?vlnk=2328
6. An article reviewing and summarising movements in CPI and RPI during 2005 and contributions to the change in the annual rates over the year is available to download from the National Statistics website at
<http://www.statistics.gov.uk/cci/article.asp?ID=1456>

Rebasing

7. All published Consumer Prices Index (CPI) levels, including back series, were rebased to 2005=100 with effect from 14 February 2006. The rebased series replace the previous series, based on 1996=100, as the official CPI series. All series based on 1996=100 have been discontinued but are available from Time Series Data on the National Statistics website.
8. ONS has taken the opportunity of the CPI re-basing exercise to standardise procedures for the calculation of rates of change from index numbers. Rates of change for the CPI are now calculated from unrounded index levels, rather than on the published indices, which are rounded to one decimal point. The use of unrounded indices increases the accuracy of the calculation. This change came into effect with re-basing and has been applied retrospectively. The unrounded index levels are available on request.
9. A spreadsheet available at http://www.statistics.gov.uk/downloads/theme_economy/rebasing_2005.xls shows how the new series identifiers for the rebased index levels, and the one-month and 12-month rates of change, correspond with the previous set of identifiers based on 1996=100. The change of reference period does not apply to the Retail Prices Index, which remains unchanged. The revised procedure for calculating inflation rates does not apply to the RPI which continues to be calculated from rounded indices.

Revisions

10. Once the RPI indices are published they are never revised. CPI indices are revisable and following the introduction last month of unrounded indices for calculating CPI rates of change, further quality checks have identified some rounding errors. These affect in particular the all goods, all services and all cars 1-month and 12-month rates which have been revised in some months by +/-0.1 percentage points. Revisions of up to +/-0.1 index points have also been made to the annual and quarterly average indices for all components. In addition, the recreational and cultural services index for January 2006 has been revised down from 101.6 to 101.5.

Introduction of new Indices CPIY and CPI-CT

11. As announced last month, two new indices based on the CPI are published for the first time in Table 1 of this month's First Release. These indices provide different ways of examining the impact of indirect taxes on the CPI. CPI excluding indirect taxes (CPIY) follows a similar methodology to RPIY. CPI at constant taxes (CPI-CT) holds taxes constant at the rate prevailing in the base period; when compared against the CPI one-month or 12-month rate of change it shows directly the impact of changes in indirect tax rates. Three CPI-CT component sub-indices are also published on the National Statistics website. An article providing more information about these new series is available to download from the National Statistics website at:

<http://www.statistics.gov.uk/cci/article.asp?ID=1454>.

The consumer prices index (Tables 1 to 6)

12. The Chancellor of the Exchequer, in his Pre-Budget Report statement on 10 December 2003, said that with immediate effect the inflation target for the United Kingdom will be defined in terms of the CPI measure of inflation. The

inflation target is specified as a 2 per cent increase for the 12-month rate of change in the CPI. Further details are available at: www.hm-treasury.gov.uk

13. Tables 5 and 6 provide a more detailed analysis of the goods and services components of the CPI, as well as special aggregate indices and related measures of the all items CPI excluding various components. An article providing more information about these series is available to download from the National Statistics website:

<http://www.statistics.gov.uk/cci/article.asp?ID=1060>

The harmonised index of consumer prices (Table 7)

14. HICPs are calculated in each Member State of the European Union, according to rules specified in a series of European Regulations developed by the EU statistical office in conjunction with the EU Member States. In the UK, the HICP is known as the CPI, but the two remain one and the same index.
15. HICPs are used to compare inflation rates across the European Union. Since January 1999 it has also been used by the European Central Bank (ECB) as the measure of price stability across the euro area. Further details are available from the National Statistics website, www.statistics.gov.uk/hicp, and in an ECB Press Notice of 13 October 1998, *A stability-oriented monetary policy strategy for the European System of Central Banks*, available at: www.ecb.int/press/html/index.en.html

The retail prices index (Tables 1, 8 and 9)

16. The RPI is the most familiar general purpose measure of inflation in the United Kingdom and is continuously available from June 1947. Further details are available from the National Statistics website: www.statistics.gov.uk/rpi.
17. The RPI is used for a variety of purposes including the indexation of various incomes and prices. The Chancellor of the Exchequer, in his Pre-Budget Report statement on 10 December 2003, confirmed that uprating of pensions, benefits and index-linked gilts will continue to be calculated with reference to the RPI or its derivatives.

Differences between the CPI and the RPI (Table 10)

18. While the methodology of the CPI is similar to the RPI, it differs in the following ways:
 - In the CPI, the geometric mean is used to combine the individual prices at the most basic level whereas the RPI uses arithmetic means.
 - The CPI excludes a number of RPI series mainly relating to housing costs (for example, council tax), and in particular to owner occupiers' housing costs (including mortgage interest payments, house depreciation, and buildings insurance). In addition, the CPI excludes the annual road fund license and TV licenses which are classified as taxes in the UK national accounts, and Trades Union subscriptions which by convention are not part of Household expenditure.
 - The CPI includes series for university accommodation fees, foreign students' university tuition fees, and unit trust and stockbrokers charges, none of which are included in the RPI.

- Coverage of the CPI is based on the international classification system, COICOP (classification of individual consumption by purpose). The way in which this maps to the RPI groupings is shown in the table on the following page :

COICOP Divisions	RPI Groups
01 Food & non-alcoholic beverages	Food
02 Alcohol & tobacco	Alcoholic drink (off sales) Tobacco
03 Clothing & footwear	Clothing & footwear
04 Housing & household services	Housing (exc. MIPs, depreciation, council tax & building insurance) Fuel & light
05 Furniture & household goods	Household goods Domestic services
06 Health	Personal goods & services (health-related items)
07 Transport	Motoring expenditure Fares & other travel costs
08 Communication	Household services (exc. domestic services & fees and subscriptions)
09 Recreation & culture	Leisure goods Leisure services
10 Education	Fees & subscriptions (education-related items)
11 Restaurants & hotels	Catering Alcoholic drink (on sales)
12 Miscellaneous goods & services	Personal goods & services (non health-related items) Fees & subscriptions (non education-related items)

- The index for the purchase of new cars in the CPI is quality adjusted and based on actual published prices for new cars, whereas in the RPI new car prices are imputed from movements in second hand car prices.
- The CPI weights are based on expenditure by all private households, foreign visitors to the UK and residents of institutional households. In the RPI, weights are based on expenditure by private households only, excluding the highest income households and pensioner households mainly dependent on state benefits.
- In the construction of the CPI weights, amounts paid out in insurance claims are distributed among the COICOP headings according to the nature of the claims' expenditure, with the residual (the service charge) being allocated to the relevant insurance heading. For the RPI weights, total expenditure (that is, gross of claims paid out) is assigned to the relevant insurance heading.

19. A breakdown of the difference between the CPI and RPI annual rates of inflation is shown in Table 10.

20. The coverage of the CPI was extended in stages with effect from the January 2000, 2001, and 2002 indices, and CPI methodology has also evolved since its launch. Details of these extensions can be found in a series of Economic Trends articles available from the National Statistics website:
www.statistics.gov.uk/cpi

Publication dates

21. Future publication dates are 20 April, 16 May, 13 June, 18 July, 15 August and 12 September. The European Commission released HICP figures for the month of February 2006 for EU Member States excluding the UK, together with an EU average, on 16 March. March figures will be released on 20 April.

General

22. Details of the policy governing the release of new data are available from the press office. Also available is a list of the names of those given pre-publication access to contents of this release.
23. Complete runs of series in this release are available to download free of charge at: www.statistics.gov.uk/timeseries Alternatively, for low-cost tailored data call Online Services on 020 7533 5675 or email: tailored@statistics.gov.uk
24. **National Statistics** are produced to high professional standards set out in the National Statistics Code of Practice. They undergo regular quality assurance reviews to ensure that they meet customer needs. They are produced free from any political interference. © Crown Copyright 2006

1 CPI, RPI and other selected indices: the latest three years

	Consumer prices index (CPI) ¹		Consumer prices index excluding indirect taxes (CPIY) ³		Consumer prices index at constant tax rates (CPI-CT)		All items retail prices index (RPI)		All items RPI excluding			
	Percentage change over 12 months		Percentage change over 12 months		Percentage change over 12 months		Percentage change over 12 months		mortgage interest payments (RPIX)		mortgage interest payments and indirect taxes (RPIY) ²	
	Index (2005=100)	Index (2005=100)	Index (2005=100)	Index (2005=100)	Index (2005=100)	Index (2005=100)	Index (Jan 13, 1987=100)	Index (Jan 13, 1987=100)	Index (Jan 13, 1987=100)	Index (Jan 13, 1987=100)	Index (Jan 13, 1987=100)	Index (Jan 13, 1987=100)
	D7BT	D7G7	EL2Q	EL2S	EAC7	EAD6	CHAW	CZBH	CHMK	CDKQ	CBZW	CBZX
2003 Feb	96.0	1.6	95.9	..	96.3	..	179.3	3.2	177.9	3.0	170.6	3.1
Mar	96.3	1.5	96.2	..	96.6	..	179.9	3.1	178.7	3.0	171.4	3.2
Apr	96.7	1.4	96.5	..	96.9	..	181.2	3.1	180.0	3.0	171.8	2.9
May	96.7	1.3	96.6	..	96.9	..	181.5	3.0	180.2	2.9	171.9	2.7
Jun	96.5	1.1	96.4	..	96.7	..	181.3	2.9	180.0	2.8	171.7	2.7
Jul	96.5	1.3	96.3	..	96.7	..	181.3	3.1	179.9	2.9	171.6	2.8
Aug	96.8	1.4	96.7	..	97.0	..	181.6	2.9	180.4	2.9	172.2	2.7
Sep	97.1	1.4	97.0	..	97.3	..	182.5	2.8	181.3	2.8	173.2	2.7
Oct	97.2	1.4	97.1	..	97.4	..	182.6	2.6	181.3	2.7	173.1	2.4
Nov	97.2	1.3	97.1	..	97.3	..	182.7	2.5	181.4	2.5	173.1	2.1
Dec	97.5	1.3	97.4	1.1	97.6	1.1	183.5	2.8	181.8	2.6	173.5	2.2
2004 Jan	97.0	1.4	96.9	1.5	97.2	1.3	183.1	2.6	181.4	2.4	173.2	2.0
Feb	97.2	1.3	97.2	1.3	97.4	1.1	183.8	2.5	182.0	2.3	173.9	1.9
Mar	97.4	1.1	97.3	1.1	97.5	1.0	184.6	2.6	182.5	2.1	174.3	1.7
Apr	97.8	1.1	97.6	1.1	97.8	1.0	185.7	2.5	183.6	2.0	174.9	1.8
May	98.1	1.5	98.0	1.4	98.2	1.3	186.5	2.8	184.3	2.3	175.6	2.2
Jun	98.1	1.6	97.9	1.5	98.1	1.4	186.8	3.0	184.2	2.3	175.6	2.3
Jul	97.8	1.4	97.7	1.4	97.9	1.2	186.8	3.0	183.8	2.2	175.1	2.0
Aug	98.1	1.3	97.9	1.3	98.1	1.1	187.4	3.2	184.3	2.2	175.7	2.0
Sep	98.2	1.1	98.0	1.0	98.2	0.9	188.1	3.1	184.7	1.9	176.1	1.7
Oct	98.4	1.2	98.3	1.2	98.5	1.1	188.6	3.3	185.1	2.1	176.6	2.0
Nov	98.6	1.5	98.5	1.4	98.7	1.4	189.0	3.4	185.4	2.2	176.9	2.2
Dec	99.1	1.7	99.1	1.7	99.2	1.6	189.9	3.5	186.4	2.5	177.9	2.5
2005 Jan	98.6	1.6	98.5	1.7	98.6	1.5	188.9	3.2	185.2	2.1	176.7	2.0
Feb	98.8	1.7	98.8	1.7	98.9	1.6	189.6	3.2	185.9	2.1	177.4	2.0
Mar	99.3	1.9	99.3	2.0	99.3	1.8	190.5	3.2	186.8	2.4	178.3	2.3
Apr	99.7	1.9	99.6	2.0	99.6	1.9	191.6	3.2	187.8	2.3	179.0	2.3
May	100.0	1.9	100.0	2.0	100.0	1.8	192.0	2.9	188.2	2.1	179.4	2.2
Jun	100.0	2.0	100.0	2.2	100.0	1.9	192.2	2.9	188.3	2.2	179.5	2.2
Jul	100.1	2.3	100.1	2.5	100.1	2.3	192.2	2.9	188.3	2.4	179.5	2.5
Aug	100.4	2.4	100.5	2.6	100.4	2.3	192.6	2.8	188.6	2.3	179.8	2.3
Sep	100.6	2.5	100.6	2.6	100.6	2.4	193.1	2.7	189.3	2.5	180.5	2.5
Oct	100.7	2.3	100.8	2.5	100.7	2.3	193.3	2.5	189.5	2.4	180.7	2.3
Nov	100.7	2.1	100.8	2.3	100.7	2.1	193.6	2.4	189.7	2.3	180.9	2.3
Dec	101.0	1.9	101.1	2.1	101.0	1.8	194.1	2.2	190.2	2.0	181.5	2.0
2006 Jan	100.5	1.9	100.6	2.1	100.5	1.9	193.4	2.4	189.4	2.3	180.7	2.3
Feb	100.9	2.0	100.9	2.1	100.8	2.0	194.2	2.4	190.1	2.3	181.4	2.3

1 Inflation rates prior to 1997 and index levels prior to 1996 are estimated. Further details are given in *Economic Trends No. 541 December 1998*. These details are also available on the National Statistics website: www.statistics.gov.uk/cci/article.asp?ID=31

2 The taxes excluded are council tax, VAT, duties, vehicle excise duty, insurance tax and air passenger duty.

3 The taxes excluded are VAT, duties, insurance premium tax, air passenger duty, stamp duty on share transactions.

Source: National Statistics

2 CPI: Detailed figures for 14 February 2006

	Percentage change over				Percentage change over		
	Index (2005 =100)	1 mth	12 mths		Index (2005 =100)	1 mth	12 mths
CPI (overall index)	100.9	0.3	2.0				
01 Food and non-alcoholic beverages	101.0	0.6	1.1	06.2 Out-patient services	102.8	0.3	4.5
02 Alcoholic beverages and tobacco	100.8	-0.2	1.6	06.2.1/3 Medical services & paramedical services	103.1	0.6	4.0
03 Clothing and footwear	95.9	-0.1	-4.7	06.2.2 Dental services	102.4	-0.1	4.9
04 Housing, water, electricity, gas and other fuels	103.6	0.3	6.4	06.3 Hospital services	102.8	0.1	5.7
05 Furniture, household equipment and maintenance	98.5	0.7	-0.5	07.1 Purchase of vehicles	99.7	-	-1.0
06 Health	101.1	0.2	2.3	07.1.1A New cars	100.4	0.2	0.8
07 Transport	101.4	0.2	4.2	07.1.1B Second-hand cars	98.2	-0.4	-4.5
08 Communication	101.0	0.1	0.4	07.1.2/3 Motorcycles and bicycles	98.8	0.2	-0.6
09 Recreation and culture	99.4	0.8	-0.8	07.2 Operation of personal transport equipment	103.6	0.3	8.3
10 Education	103.3	-	4.7	07.2.1 Spare parts and accessories	101.8	0.3	2.2
11 Restaurants and hotels	101.9	0.4	3.5	07.2.2 Fuels and lubricants	103.2	0.6	11.6
12 Miscellaneous goods and services	102.1	0.1	3.6	07.2.3 Maintenance and repairs	104.3	-	6.3
All goods	100.0	0.5	0.6	07.2.4 Other services	103.5	-0.1	6.2
All services	101.8	0.1	3.7	07.3 Transport services	99.6	0.1	4.5
01.1 Food	100.9	0.6	0.9	07.3.1 Passenger transport by railway	103.6	0.8	4.3
01.1.1 Bread and cereals	101.3	0.4	1.1	07.3.2 Passenger transport by road	104.2	-0.1	6.4
01.1.2 Meat	100.7	0.3	0.7	07.3.3 Passenger transport by air	85.3	-1.9	-3.8
01.1.3 Fish	103.3	0.7	5.7	07.3.4 Passenger transport by sea and inland waterway	96.8	5.5	3.9
01.1.4 Milk, cheese and eggs	102.1	0.6	4.7	08.1 Postal services	101.0	-	4.1
01.1.5 Oils and fats	98.0	0.5	-5.1	08.2/3 Telephone and telefax equipment and services	100.9	0.1	-
01.1.6 Fruit	97.6	-0.1	0.7	09.1 Audio-visual equipment and related products	93.3	-1.6	-10.7
01.1.7 Vegetables including potatoes and tubers	100.5	1.7	-4.6	09.1.1 Reception and reproduction of sound and pictures	91.8	0.5	-14.0
01.1.8 Sugar, jam, syrups, chocolate and confectionery	102.0	0.4	3.7	09.1.2 Photographic, cinematographic and optical equipment	83.2	-1.2	-23.6
01.1.9 Food products (nec)	98.9	-0.1	-1.9	09.1.3 Data processing equipment	93.7	0.9	-14.2
01.2 Non-alcoholic beverages	102.0	0.8	2.2	09.1.4 Recording media	97.2	-4.5	-2.4
01.2.1 Coffee, tea and cocoa	101.9	1.2	4.0	09.1.5 Repair of audio-visual equipment & related products	102.1	0.1	4.5
01.2.2 Mineral waters, soft drinks and juices	102.1	0.7	1.6	09.2 Oth. major durables for recreation & culture	98.8	0.1	-1.0
02.1 Alcoholic beverages	99.6	-0.4	-0.7	09.2.1/2 Major durables for in/outdoor recreation	98.8	0.1	-1.0
02.1.1 Spirits	100.2	0.3	-0.6	09.3 Other recreational items, gardens and pets	100.4	2.9	0.3
02.1.2 Wine	99.8	-0.6	0.1	09.3.1 Games, toys and hobbies	100.2	4.5	0.3
02.1.3 Beer	98.1	-0.9	-2.9	09.3.2 Equipment for sport and open-air recreation	96.8	0.3	-4.1
02.2 Tobacco	101.8	-0.1	3.5	09.3.3 Gardens, plants and flowers	101.5	1.0	-0.9
03.1 Clothing	95.9	-0.2	-4.5	09.3.4/5 Pets, related products and services	101.8	0.2	3.3
03.1.2 Garments	95.6	-0.1	-4.8	09.4 Recreational and cultural services	101.6	-	4.1
03.1.3 Other clothing and clothing accessories	98.2	-1.1	-0.4	09.4.1 Recreational and sporting services	102.8	-	4.8
03.1.4 Cleaning, repair and hire of clothing	102.4	0.4	3.7	09.4.2 Cultural services	101.1	-	3.8
03.2 Footwear including repairs	95.9	0.3	-5.7	09.5 Books, newspapers and stationery	102.8	2.4	3.4
04.1 Actual rentals for housing	101.4	0.1	3.3	09.5.1 Books	104.1	7.9	2.3
04.3 Regular maintenance and repair of the dwelling	100.8	-0.1	1.4	09.5.2 Newspapers and periodicals	103.8	-	5.6
04.3.1 Materials for maintenance and repair	99.2	-0.3	-1.1	09.5.3/4 Misc. printed matter, stationery, drawing materials	99.9	0.1	1.2
04.3.2 Services for maintenance and repair	103.2	0.1	5.2	09.6 Package holidays	98.8	0.2	-1.7
04.4 Water supply and misc. services for the dwelling	102.6	-	11.4	10.0 Education	103.3	-	4.7
04.4.1 Water supply	103.1	-	13.6	11.1 Catering services	101.6	0.2	3.1
04.4.3 Sewerage collection	102.2	-	9.2	11.1.1 Restaurants & cafes	101.6	0.3	3.1
04.5 Electricity, gas and other fuels	109.4	0.9	13.3	11.1.2 Canteens	101.5	-0.3	3.0
04.5.1 Electricity	107.9	1.2	10.7	11.2 Accommodation services	103.6	1.0	6.2
04.5.2 Gas	110.8	0.5	14.5	12.1 Personal care	101.2	0.3	0.9
04.5.3 Liquid fuels	114.0	2.0	42.1	12.1.1 Hairdressing and personal grooming establishments	102.1	0.1	3.8
04.5.4 Solid fuels	105.5	0.1	7.0	12.1.2/3 Appliances and products for personal care	100.8	0.4	-0.2
05.1 Furniture, furnishings and carpets	98.1	0.4	1.3	12.3 Personal effects (nec)	100.4	1.8	0.7
05.1.1 Furniture and furnishings	97.5	0.2	1.1	12.3.1 Jewellery, clocks and watches	101.7	2.2	1.7
05.1.2 Carpets and other floor coverings	100.5	1.4	2.3	12.3.2 Other personal effects	98.4	1.2	-0.6
05.2 Household textiles	96.5	2.9	-4.5	12.4 Social protection	103.3	0.1	5.5
05.3 Household appliances, fitting and repairs	97.1	-0.5	-4.1	12.5 Insurance	98.4	-1.7	-1.1
05.3.1/2 Major appliances and small electric goods	96.5	-0.5	-4.9	12.5.2 House contents insurance	96.8	-3.1	-2.2
05.3.3 Repair of household appliances	101.4	-	1.9	12.5.3 Health insurance	103.1	-	5.2
05.4 Glassware, tableware and household utensils	97.6	0.5	-3.3	12.5.4 Transport insurance	97.3	-1.9	-2.8
05.5 Tools and equipment for house and garden	100.6	0.4	-0.2	12.6 Financial services (nec)	102.9	-0.1	6.1
05.6 Goods and services for routine maintenance	102.7	0.9	4.2	12.6.2 Other financial services (nec)	102.9	-0.1	6.1
05.6.1 Non-durable household goods	102.3	1.5	3.7	12.7 Other services (nec)	104.1	0.2	6.4
05.6.2 Domestic services and household services	103.0	0.3	4.7				
06.1 Medical products, appliances and equipment	99.4	0.2	-0.6				
06.1.1 Pharmaceutical products	99.8	0.3	-0.2				
06.1.2/3 Other medical and therapeutic equipment	99.1	0.1	-0.9				

Key: - zero or negligible .. not available (nec) not elsewhere covered

Source: National Statistics

3 CPI: Detailed figures by divisions, groups and classes

	Weights	Index (2005=100)						Percentage change over 12 months					
		2006	2005 Sep	2005 Oct	2005 Nov	2005 Dec	2006 Jan	2006 Feb	2005 Sep	2005 Oct	2005 Nov	2005 Dec	2006 Jan
CPI (overall index)	1 000	100.6	100.7	100.7	101.0	100.5	100.9	2.5	2.3	2.1	1.9	1.9	2.0
01 Food and non-alcoholic beverages	102	99.7	99.5	100.1	100.7	100.4	101.0	2.0	1.5	1.7	1.7	1.2	1.1
02 Alcoholic beverages and tobacco	44	100.3	100.7	100.7	100.2	101.0	100.8	1.4	1.9	2.5	2.5	2.3	1.6
03 Clothing and footwear	65	99.9	99.9	100.5	100.1	96.0	95.9	-5.3	-5.3	-5.1	-4.2	-4.7	-4.7
04 Housing, water, electricity, gas and other fuels	108	100.7	101.7	102.3	102.8	103.3	103.6	6.5	6.5	6.5	6.4	6.3	6.4
05 Furniture, household equipment and maintenance	73	100.2	99.4	100.5	102.8	97.8	98.5	-0.2	-0.2	0.1	0.0	-0.8	-0.5
06 Health	24	100.7	101.0	101.0	100.3	101.0	101.1	3.1	3.0	2.9	2.4	2.3	2.3
07 Transport	155	102.2	102.0	100.4	100.7	101.2	101.4	6.0	5.8	4.1	2.8	5.1	4.2
08 Communication	25	99.8	99.5	99.6	99.4	100.9	101.0	-1.2	-1.6	-1.2	-1.0	0.5	0.4
09 Recreation and culture	147	99.6	99.7	99.5	99.5	98.6	99.4	-1.6	-1.5	-1.5	-1.7	-2.1	-0.8
10 Education	17	100.8	103.3	103.3	103.3	103.3	103.3	4.7	4.7	4.7	4.7	4.7	4.7
11 Restaurants and hotels	134	100.8	101.2	101.2	101.4	101.5	101.9	3.7	3.7	3.5	3.5	3.4	3.5
12 Miscellaneous goods and services	106	100.8	101.2	101.4	101.5	102.0	102.1	5.1	4.2	4.3	4.2	3.5	3.6
All goods	554	100.3	100.3	100.5	100.6	99.5	100.0	0.7	0.6	0.4 [†]	0.3	0.3	0.6
All services	446	100.9	101.2	101.0	101.5	101.7	101.8	4.5 [†]	4.4	4.1	3.8	3.9	3.7
01.1 Food	90	99.6	99.4	100.1	100.7	100.3	100.9	2.1	1.7	1.8	1.7	1.1	0.9
01.1.1 Bread and cereals	15	100.2	100.1	100.6	101.0	100.9	101.3	2.5	2.2	2.8	2.3	2.1	1.1
01.1.2 Meat	21	100.1	99.5	101.0	100.6	100.3	100.7	1.3	1.1	2.0	0.8	0.9	0.7
01.1.3 Fish	4	100.3	101.4	101.5	102.4	102.6	103.3	2.1	2.9	3.5	3.5	3.8	5.7
01.1.4 Milk, cheese and eggs	13	100.8	101.3	101.4	101.6	101.6	102.1	3.7	4.1	3.8	4.1	4.1	4.7
01.1.5 Oils and fats	2	98.9	98.8	98.2	98.5	97.5	98.0	-4.7	-4.2	-4.9	-5.1	-5.9	-5.1
01.1.6 Fruit	8	98.7	99.8	102.3	102.2	97.7	97.6	3.5	2.9	0.2	1.9	0.3	0.7
01.1.7 Vegetables including potatoes and tubers	14	96.7	94.3	94.6	98.4	98.8	100.5	1.9	-1.5	-1.2	-0.2	-3.1	-4.6
01.1.8 Sugar, jam, syrups, chocolate and confectionery	11	100.5	101.1	101.2	101.0	101.5	102.0	2.3	2.9	3.0	2.8	3.1	3.7
01.1.9 Food products (nec)	2	99.3	99.3	99.2	98.9	99.1	98.9	-1.2	-1.7	-0.9	-2.2	-1.9	-1.9
01.2 Non-alcoholic beverages	12	100.0	99.9	99.9	101.0	101.2	102.0	0.7	0.4	1.1	2.0	1.9	2.2
01.2.1 Coffee, tea and cocoa	3	101.6	100.5	101.5	101.3	100.7	101.9	3.1	1.4	3.0	2.5	2.2	4.0
01.2.2 Mineral waters, soft drinks and juices	9	99.6	99.7	99.5	100.9	101.3	102.1	0.0	0.0	0.5	1.8	1.8	1.6
02.1 Alcoholic beverages	18	100.4	100.2	99.4	98.3	100.0	99.6	-1.1	-1.0	-0.5	-0.4	0.1	-0.7
02.1.1 Spirits	5	100.4	100.4	98.3	96.6	100.0	100.2	-1.4	-1.3	-0.1	-0.1	0.4	-0.6
02.1.2 Wine	9	100.5	100.5	100.2	99.1	100.4	99.8	0.6	0.4	0.5	0.5	0.8	0.1
02.1.3 Beer	4	100.3	99.5	98.9	98.1	98.9	98.1	-3.8	-3.5	-2.6	-2.4	-1.8	-2.9
02.2 Tobacco	26	100.2	101.1	101.7	101.7	101.8	101.8	3.2	4.1	4.8	4.7	4.0	3.5
03.1 Clothing	56	99.8	99.9	100.6	100.4	96.0	95.9	-5.4	-5.3	-5.1	-4.0	-4.5	-4.5
03.1.2 Garments	52	99.8	99.9	100.5	100.4	95.7	95.6	-5.9	-5.7	-5.5	-4.3	-4.9	-4.8
03.1.3 Other clothing and clothing accessories	3	101.0	100.2	101.2	101.2	99.3	98.2	1.1	-1.0	-1.3	-1.4	0.4	-0.4
03.1.4 Cleaning, repair and hire of clothing	1	100.7	101.0	101.4	101.7	102.0	102.4	5.1	5.0	4.9	3.9	3.7	3.7
03.2 Footwear including repairs	9	100.1	99.6	99.6	98.0	95.6	95.9	-4.4	-5.3	-5.4	-5.4	-5.7	-5.7
04.1 Actual rentals for housing	47	100.9	100.9	101.0	101.1	101.2	101.4	3.9	3.4	3.3	3.3	3.2	3.3
04.3 Regular maintenance and repair of the dwelling	19	99.5	100.1	100.0	100.2	101.0	100.8	1.4	1.1	0.8	1.0	1.5	1.4
04.3.1 Materials for maintenance and repair	11	98.6	99.1	98.7	99.0	99.5	99.2	-1.2	-1.5	-1.9	-1.5	-1.1	-1.1
04.3.2 Services for maintenance and repair	8	100.9	101.5	101.8	101.9	103.0	103.2	5.3	5.0	5.1	4.8	5.4	5.2
04.4 Water supply and misc. services for the dwelling	10	102.6	102.6	102.6	102.6	102.6	102.6	11.4	11.4	11.4	11.4	11.4	11.4
04.4.1 Water supply	5	103.1	103.1	103.1	103.1	103.1	103.1	13.6	13.6	13.6	13.6	13.6	13.6
04.4.3 Sewerage collection	5	102.2	102.2	102.2	102.2	102.2	102.2	9.2	9.2	9.2	9.2	9.2	9.2
04.5 Electricity, gas and other fuels	32	100.6	103.6	105.8	107.4	108.4	109.4	12.9	14.2	14.3	13.7	13.0	13.3
04.5.1 Electricity	15	100.3	102.5	104.7	105.7	106.7	107.9	10.2	11.5	11.8	10.8	10.2	10.7
04.5.2 Gas	14	99.8	103.4	107.2	109.4	110.3	110.8	14.1	16.6	17.1	15.6	14.4	14.5
04.5.3 Liquid fuels	2	114.2	118.7	105.8	109.7	111.8	114.0	41.5	29.8	24.4	38.9	39.7	42.1
04.5.4 Solid fuels	1	99.8	104.0	105.0	105.3	105.4	105.5	8.6	9.0	8.6	8.0	7.6	7.0
05.1 Furniture, furnishings and carpets	32	99.9	99.1	101.0	106.3	97.7	98.1	0.9	1.0	2.3	1.6	0.9	1.3
05.1.1 Furniture and furnishings	25	100.0	98.6	100.9	107.3	97.3	97.5	1.0	0.9	2.4	2.4	1.0	1.1
05.1.2 Carpets and other floor coverings	7	99.7	100.7	101.4	103.0	99.2	100.5	0.7	1.5	2.2	-1.1	0.7	2.3
05.2 Household textiles	8	100.8	97.8	99.8	100.0	93.8	96.5	-4.7	-5.2	-6.3	-5.0	-5.6	-4.5
05.3 Household appliances, fitting and repairs	9	100.8	100.0	99.8	99.7	97.5	97.1	-1.5	-1.8	-2.0	-1.0	-1.8	-4.1
05.3.1/2 Major appliances and small electric goods	8	100.9	99.8	99.7	99.5	97.0	96.5	-2.1	-2.4	-2.7	-1.5	-2.3	-4.9
05.3.3 Repair of household appliances	1	100.3	100.7	100.5	100.6	101.4	101.4	2.9	3.2	2.9	2.8	2.2	1.9
05.4 Glassware, tableware and household utensils	7	99.9	99.7	100.8	100.9	97.1	97.6	-3.2	-2.6	-3.0	-2.9	-3.8	-3.3
05.5 Tools and equipment for house and garden	6	99.7	99.3	99.2	99.7	100.3	100.6	-2.4	-2.6	-2.5	-1.9	-0.7	-0.2
05.6 Goods and services for routine maintenance	11	100.9	101.1	100.8	101.8	101.8	102.7	3.2	3.2	3.0	3.8	3.2	4.2
05.6.1 Non-durable household goods	5	100.9	101.0	100.1	101.6	100.8	102.3	2.1	2.1	2.0	3.1	2.0	3.7
05.6.2 Domestic services and household services	6	100.9	101.1	101.4	102.0	102.7	103.0	4.2	4.2	4.0	4.4	4.3	4.7
06.1 Medical products, appliances and equipment	11	100.0	100.4	100.2	98.7	99.2	99.4	-0.1	0.3	0.1	-0.7	-0.7	-0.6
06.1.1 Pharmaceutical products	5	99.8	100.5	100.0	98.2	99.5	99.8	-1.0	-0.2	-0.5	-0.8	-0.9	-0.2
06.1.2/3 Other medical and therapeutic equipment	6	100.2	100.2	100.3	99.1	99.0	99.1	0.4	0.4	0.5	-0.7	-0.4	-0.9

Key: - zero or negligible .. not available (nec) not elsewhere covered

[†] This series has been revised. See background not 10 for details.

Source: National Statistics

3 CPI: Detailed figures by divisions, groups and classes

continued

	Weights	Index (2005=100)						Percentage change over 12 months					
		2006	2005 Sep	2005 Oct	2005 Nov	2005 Dec	2006 Jan	2006 Feb	2005 Sep	2005 Oct	2005 Nov	2005 Dec	2006 Jan
06.2 Out-patient services	4	100.9	101.2	101.4	101.8	102.5	102.8	5.8	4.2	4.3	4.4	4.4	4.5
06.2.1/3 Medical services & paramedical services	2	100.6	100.8	101.1	101.5	102.4	103.1	7.3	3.8	3.9	3.8	3.8	4.0
06.2.2 Dental services	2	101.2	101.5	101.7	102.0	102.5	102.4	4.3	4.6	4.7	4.9	5.0	4.9
06.3 Hospital services	9	101.7	101.9	102.0	102.0	102.8	102.8	6.3	6.2	6.2	6.1	5.7	5.7
07.1 Purchase of vehicles	52	99.6	99.6	99.3	99.2	99.7	99.7	-0.9	-0.4	-0.6	-0.6	-0.6	-1.0
07.1.1A New cars	31	100.4	100.5	100.1	100.1	100.2	100.4	1.5	1.6	1.0	1.0	0.9	0.8
07.1.1B Second-hand cars	18	98.1	98.0	97.8	97.2	98.6	98.2	-4.9	-3.7	-3.3	-3.4	-3.4	-4.5
07.1.2/3 Motorcycles and bicycles	3	99.6	99.4	99.4	99.3	98.6	98.8	-3.6	-3.7	-3.3	-2.9	-2.2	-0.6
07.2 Operation of personal transport equipment	71	104.8	104.4	103.0	101.7	103.2	103.6	10.9	9.3	7.0	6.2	8.6	8.3
07.2.1 Spare parts and accessories	6	100.7	100.7	101.1	101.0	101.4	101.8	2.2	2.0	2.2	2.2	1.8	2.2
07.2.2 Fuels and lubricants	35	109.4	107.9	104.1	100.7	102.6	103.2	17.5	13.4	7.9	6.6	12.5	11.6
07.2.3 Maintenance and repairs	24	101.0	101.5	102.2	102.6	104.3	104.3	6.4	6.6	6.8	6.5	6.4	6.3
07.2.4 Other services	6	102.1	102.5	102.7	103.2	103.6	103.5	5.9	6.0	6.0	6.2	6.4	6.2
07.3 Transport services	32	101.2	100.8	96.8	101.3	99.5	99.6	7.3	9.1	6.1	1.2	7.2	4.5
07.3.1 Passenger transport by railway	8	100.0	100.4	100.7	100.5	102.8	103.6	3.3	4.3	3.8	3.5	3.4	4.3
07.3.2 Passenger transport by road	15	101.0	101.7	101.6	102.0	104.3	104.2	6.1	6.7	5.9	6.2	6.4	6.4
07.3.3 Passenger transport by air	7	102.2	100.6	87.9	103.1	87.0	85.3	8.7	13.9	7.5	-12.1	8.2	-3.8
07.3.4 Passenger transport by sea and inland waterway	2	102.9	97.5	92.3	91.5	91.8	96.8	-8.5	-7.6	-12.0	-14.0	0.0	3.9
08.1 Postal services	1	101.0	101.0	101.0	101.0	101.0	101.0	4.3	4.1	4.1	4.1	4.1	4.1
08.2/3 Telephone and telefax equipment and services	24	99.7	99.4	99.5	99.3	100.8	100.9	-1.7	-2.1	-1.7	-1.4	0.1	0.0
09.1 Audio-visual equipment and related products	27	96.5	96.3	94.6	95.2	94.8	93.3	-13.4	-12.5	-13.6	-12.3	-10.6	-10.7
09.1.1 Reception and reproduction of sound and pictures	6	96.6	93.2	92.8	92.5	91.3	91.8	-14.1	-16.7	-16.6	-16.3	-15.0	-14.0
09.1.2 Photographic, cinematographic and optical equipment	5	94.5	92.7	85.6	86.4	84.2	83.2	-21.2	-21.8	-26.9	-24.2	-23.2	-23.6
09.1.3 Data processing equipment	5	94.9	95.9	94.9	95.6	93.0	93.7	-21.9	-18.6	-17.8	-16.0	-17.0	-14.2
09.1.4 Recording media	10	97.5	99.3	98.4	99.5	101.8	97.2	-6.3	-3.9	-5.3	-4.1	0.1	-2.4
09.1.5 Repair of audio-visual equipment & related products	1	101.3	101.7	101.8	101.7	102.0	102.1	5.9	5.6	5.1	4.6	4.4	4.5
09.2 Other major durables for recreation & culture	9	100.1	100.2	100.4	100.4	98.7	98.8	1.0	1.0	0.6	0.6	-1.1	-1.0
09.2.1/2 Major durables for in/outdoor recreation	9	100.1	100.2	100.4	100.4	98.7	98.8	1.0	1.0	0.6	0.6	-1.1	-1.0
09.3 Other recreational items, gardens and pets	39	99.8	100.1	99.9	99.4	97.6	100.4	-1.0	-1.6	-1.1	-2.6	-3.7	0.3
09.3.1 Games, toys and hobbies	23	100.1	100.3	100.0	98.5	95.8	100.2	-1.0	-2.2	-1.1	-4.2	-6.6	0.3
09.3.2 Equipment for sport and open-air recreation	4	99.0	99.6	98.0	98.7	96.5	96.8	-7.4	-6.4	-7.3	-6.9	-4.2	-4.1
09.3.3 Gardens, plants and flowers	5	98.3	99.1	99.5	100.2	100.6	101.5	-1.4	-1.9	-1.6	-1.2	-0.5	-0.9
09.3.4/5 Pets, related products and services	7	100.8	100.8	101.1	101.3	101.6	101.8	3.3	3.4	3.3	3.4	3.2	3.3
09.4 Recreational and cultural services	28	101.3	101.4	101.9	102.5	101.5 [†]	101.6	3.5	4.4	4.9	5.3	4.3	4.1
09.4.1 Recreational and sporting services	8	102.3	102.3	102.5	102.7	102.8	102.8	4.9	4.8	5.0	4.9	4.7	4.8
09.4.2 Cultural services	20	100.9	101.1	101.6	102.4	101.1	101.1	3.0	4.3	4.9	5.4	4.1	3.8
09.5 Books, newspapers and stationery	17	100.3	100.5	101.0	100.8	100.4	102.8	0.9	1.0	1.6	0.7	0.9	3.4
09.5.1 Books	5	101.4	100.8	100.4	98.7	96.4	104.1	1.3	0.5	-0.3	-2.9	-2.3	2.3
09.5.2 Newspapers and periodicals	7	100.3	100.8	102.7	103.1	103.8	103.8	1.1	1.8	4.0	4.3	5.4	5.6
09.5.3/4 Misc. printed matter, stationery, drawing materials	5	99.5	100.0	99.6	99.7	99.7	99.9	0.5	0.4	0.3	-0.4	-1.4	1.2
09.6 Package holidays	27	99.4	99.3	98.9	98.8	98.6	98.8	0.0	-0.7	-1.3	-1.4	-1.9	-1.7
10.0 Education	17	100.8	103.3	103.3	103.3	103.3	103.3	4.7	4.7	4.7	4.7	4.7	4.7
11.1 Catering services	116	100.7	101.0	101.1	101.3	101.4	101.6	3.3	3.3	3.2	3.2	3.1	3.1
11.1.1 Restaurants & cafes	103	100.6	101.0	101.1	101.3	101.3	101.6	3.3	3.3	3.2	3.2	3.1	3.1
11.1.2 Canteens	13	100.9	101.0	101.4	101.5	101.8	101.5	3.7	3.3	3.0	3.4	3.4	3.0
11.2 Accommodation services	18	102.1	102.5	101.8	102.3	102.6	103.6	6.7	6.3	5.3	5.4	5.5	6.2
12.1 Personal care	32	99.5	100.0	100.0	100.1	100.9	101.2	0.5	0.2	0.3	0.2	0.9	0.9
12.1.1 Hairdressing and personal grooming establishments	8	100.8	101.1	101.2	101.6	102.0	102.1	4.5	4.5	4.1	4.4	4.1	3.8
12.1.2/3 Appliances and products for personal care	24	99.0	99.6	99.5	99.4	100.4	100.8	-1.0	-1.5	-1.1	-1.4	-0.3	-0.2
12.3 Personal effects (nec)	11	101.0	100.4	100.7	100.8	98.6	100.4	0.0	-0.2	-0.2	-0.2	-0.3	0.7
12.3.1 Jewellery, clocks and watches	7	100.8	100.6	100.6	100.5	99.5	101.7	-0.2	-0.2	-0.4	-0.3	0.3	1.7
12.3.2 Other personal effects	4	101.7	100.0	101.0	101.5	97.2	98.4	0.6	-0.3	0.1	0.0	-0.9	-0.6
12.4 Social protection	12	101.4	101.9	102.1	102.3	103.3	103.3	6.1	6.2	6.0	5.7	5.5	5.5
12.5 Insurance	9	99.8	100.1	100.8	100.2	100.2	98.4	-0.5	0.0	0.6	0.0	-0.8	-1.1
12.5.2 House contents insurance	2	100.9	100.5	100.7	100.9	99.8	96.8	-0.9	-1.3	-1.8	-0.7	0.3	-2.2
12.5.3 Health insurance	2	101.2	101.6	101.6	101.6	103.1	103.1	4.9	5.1	5.1	5.1	5.2	5.2
12.5.4 Transport insurance	5	99.0	99.4	100.5	99.5	99.3	97.3	-2.8	-1.8	-0.7	-1.9	-3.3	-2.8
12.6 Financial services (nec)	29	101.6	102.4	102.4	102.4	103.0	102.9	10.9	8.2	8.2	8.1	6.2	6.1
12.6.2 Other financial services (nec)	29	101.6	102.4	102.4	102.4	103.0	102.9	10.9	8.2	8.2	8.1	6.2	6.1
12.7 Other services (nec)	13	101.3	101.7	102.2	102.7	103.9	104.1	7.9	7.1	7.3	7.4	6.3	6.4

Key: - zero or negligible .. not available (nec) not elsewhere covered

[†] This series has been revised. See background note 10 for details.

Source: National Statistics

4 CPI: Detailed figures by division¹

	Food and non-alcoholic beverages	Alcoholic beverages and tobacco	Clothing and footwear	Housing, water, electricity, gas & other fuels	Furniture, household equipment & routine maintenance	Health ²	Transport	Communication	Recreation and culture	Education ²	Restaurants and hotels	Miscellaneous goods and services ²	CPI (overall index)
COICOP Division	01	02	03	04	05	06	07	08	09	10	11	12	
Weights													
2006	CHZR 102	CHZS 44	CHZT 65	CHZU 108	CHZV 73	CHZW 24	CHZX 155	CHZY 25	CHZZ 147	CJUU 17	CJUV 134	CJUW 106	CHZQ 1 000
Monthly indices (2005=100)													
	D7BU	D7BV	D7BW	D7BX	D7BY	D7BZ	D7C2	D7C3	D7C4	D7C5	D7C6	D7C7	D7BT
2004 Feb	99.1	96.4	106.7	92.0	100.2	96.2	94.2	103.4	100.9	94.0	95.5	95.3	97.2
Mar	99.1	96.6	106.7	92.3	100.7	96.4	94.2	103.4	101.0	94.0	96.0	95.4	97.4
Apr	98.9	97.8	106.6	93.6	100.3	96.9	95.0	103.9	101.3	94.0	96.3	95.2	97.8
May	99.2	98.0	106.8	93.8	101.1	97.0	96.3	103.8	101.0	94.0	96.6	95.3	98.1
Jun	98.4	98.0	105.7	94.0	101.0	97.2	96.4	103.3	101.5	94.0	96.8	95.2	98.1
Jul	97.8	98.4	101.4	94.2	98.9	97.3	97.6	102.1	101.3	94.0	96.9	95.4	97.8
Aug	97.5	98.7	102.7	94.4	99.4	97.3	98.0	102.1	101.3	94.0	97.1	95.7	98.1
Sep	97.8	98.9	105.4	94.6	100.5	97.7	96.5	101.0	101.2	96.2	97.2	95.9	98.2
Oct	98.0	98.8	105.4	95.5	99.6	98.1	96.4	101.2	101.2	98.7	97.5	97.1	98.4
Nov	98.4	98.2	105.9	96.0	100.4	98.2	96.4	100.8	101.0	98.7	97.8	97.3	98.6
Dec	99.0	97.8	104.5	96.6	102.7	98.0	98.0	100.5	101.2	98.7	98.0	97.4	99.1
2005 Jan	99.2	98.8	100.7	97.2	98.6	98.7	96.4	100.3	100.7	98.7	98.2	98.5	98.6
Feb	99.9	99.2	100.5	97.4	99.0	98.8	97.3	100.5	100.2	98.7	98.4	98.6	98.8
Mar	100.8	98.7	101.3	97.7	100.7	98.9	98.0	100.4	100.2	98.7	98.7	98.8	99.3
Apr	99.9	99.8	100.9	99.6	99.3	99.5	98.5	100.5	100.7	98.7	99.5	99.3	99.7
May	100.6	100.2	101.0	99.8	100.1	99.7	99.5	100.1	100.4	98.7	99.8	99.4	100.0
Jun	100.6	100.3	100.6	100.0	100.4	99.8	99.6	100.3	100.3	98.7	99.9	99.6	100.0
Jul	99.4	100.6	96.5	100.4	99.4	100.6	102.1	99.5	99.8	98.7	100.3	100.4	100.1
Aug	99.6	100.5	98.2	100.4	99.6	100.8	103.3	99.9	99.3	98.7	100.6	100.6	100.4
Sep	99.7	100.3	99.9	100.7	100.2	100.7	102.2	99.8	99.6	100.8	100.8	100.8	100.6
Oct	99.5	100.7	99.9	101.7	99.4	101.0	102.0	99.5	99.7	103.3	101.2	101.2	100.7
Nov	100.1	100.7	100.5	102.3	100.5	101.0	100.4	99.6	99.5	103.3	101.2	101.4	100.7
Dec	100.7	100.2	100.1	102.8	102.8	100.3	100.7	99.4	99.5	103.3	101.4	101.5	101.0
2006 Jan	100.4	101.0	96.0	103.3	97.8	101.0	101.2	100.9	98.6	103.3	101.5	102.0	100.5
Feb	101.0	100.8	95.9	103.6	98.5	101.1	101.4	101.0	99.4	103.3	101.9	102.1	100.9
Percentage change on a year earlier													
	D7G8	D7G9	D7GA	D7GB	D7GC	D7GD	D7GE	D7GF	D7GG	D7GH	D7GI	D7GJ	D7G7
2004 Feb	2.2	1.7	-3.9	2.3	0.3	2.1	3.1	0.2	-2.8	4.7	2.9	4.3	1.3
Mar	1.9	1.9	-4.6	2.6	-0.7	2.1	2.1	0.2	-2.6	4.7	3.0	4.2	1.1
Apr	1.3	2.0	-4.6	3.4	0.3	2.2	1.4	0.8	-2.2	4.7	3.1	3.9	1.1
May	1.0	2.0	-4.5	3.7	-0.1	2.0	3.7	0.6	-2.0	4.7	3.0	3.9	1.5
Jun	0.8	1.9	-4.7	3.7	0.3	2.0	3.8	0.9	-1.2	4.7	2.9	3.6	1.6
Jul	0.1	2.1	-4.9	3.6	-0.7	1.2	3.9	-1.1	-0.8	4.7	2.8	3.3	1.4
Aug	-0.2	1.9	-5.7	3.7	-0.4	1.1	3.9	-1.1	-0.9	4.7	2.9	3.1	1.3
Sep	-0.7	2.2	-5.8	3.8	-0.5	1.4	3.3	-2.6	-1.0	4.5	2.7	3.1	1.1
Oct	-0.6	2.0	-5.3	4.4	-0.4	1.5	3.4	-2.1	-1.0	5.0	2.8	3.1	1.2
Nov	-0.5	2.2	-5.3	4.9	-0.4	1.5	4.1	-1.9	-0.9	5.0	2.9	3.3	1.5
Dec	-0.1	2.1	-5.4	5.4	0.7	1.9	4.0	-2.2	-0.6	5.0	2.9	3.2	1.7
2005 Jan	0.4	2.5	-5.9	5.8	-0.5	2.4	2.7	-2.3	-0.4	5.0	2.9	3.6	1.6
Feb	0.8	2.9	-5.8	5.9	-1.2	2.7	3.2	-2.7	-0.7	5.0	3.1	3.4	1.7
Mar	1.7	2.2	-5.1	5.8	-	2.6	4.0	-2.9	-0.7	5.0	2.8	3.6	1.9
Apr	1.0	2.0	-5.3	6.5	-1.0	2.7	3.8	-3.2	-0.6	5.0	3.3	4.3	1.9
May	1.4	2.3	-5.5	6.4	-1.0	2.8	3.3	-3.6	-0.5	5.0	3.3	4.3	1.9
Jun	2.2	2.3	-4.8	6.4	-0.6	2.7	3.4	-2.9	-1.2	5.0	3.2	4.6	2.0
Jul	1.7	2.2	-4.8	6.7	0.6	3.4	4.6	-2.5	-1.5	5.0	3.4	5.2	2.3
Aug	2.2	1.8	-4.4	6.3	0.2	3.7	5.4	-2.1	-2.0	5.0	3.5	5.1	2.4
Sep	2.0	1.4	-5.3	6.5	-0.2	3.1	6.0	-1.2	-1.6	4.7	3.7	5.1	2.5
Oct	1.5	1.9	-5.3	6.5	-0.2	3.0	5.8	-1.6	-1.5	4.7	3.7	4.2	2.3
Nov	1.7	2.5	-5.1	6.5	0.1	2.9	4.1	-1.2	-1.5	4.7	3.5	4.3	2.1
Dec	1.7	2.5	-4.2	6.4	-	2.4	2.8	-1.0	-1.7	4.7	3.5	4.2	1.9
2006 Jan	1.2	2.3	-4.7	6.3	-0.8	2.3	5.1	0.5	-2.1	4.7	3.4	3.5	1.9
Feb	1.1	1.6	-4.7	6.4	-0.5	2.3	4.2	0.4	-0.8	4.7	3.5	3.6	2.0

Key: - zero or negligible

¹ Inflation rates prior to 1997 and index levels prior to 1996 are estimated. Further details are given in *Economic Trends No. 541 December 1998*. These details are also available on the National Statistics website: www.statistics.gov.uk/cpi/article.asp?ID=31

² The coverage of these categories was extended in January 2000; further extensions to coverage came into effect in January 2001 for health and miscellaneous goods and services; the coverage of miscellaneous goods and services was further extended with effect from January 2002 (details are given in a series of Economic Trends articles available on the National Statistics website: www.statistics.gov.uk/cpi)

Source: National Statistics

5 CPI: Detailed goods and services breakdown¹

	Weights	Index (2005=100)						Percentage change over 12 months						Percentage change over 1 month	
		2006	2005	2005	2005	2005	2006	2006	2005	2005	2005	2005	2006	2006	2006
			Sep	Oct	Nov	Dec	Jan	Feb	Sep	Oct	Nov	Dec	Jan	Feb	Feb
CPI (overall index)	1 000	100.6	100.7	100.7	101.0	100.5	100.9	2.5	2.3	2.1	1.9	1.9	2.0	0.3	
All goods	554	100.3	100.3	100.5	100.6	99.5	100.0	0.7	0.6	0.4 [†]	0.3	0.3	0.6	0.5	
Food, alcoholic beverages & tobacco	146	99.9	99.8	100.3	100.6	100.6	101.0	1.8	1.6	2.0	1.9	1.5	1.3	0.4	
Processed food & non-alcoholic beverages	55	100.3	100.5	100.6	101.0	101.1	101.6	2.0	2.0	2.3	2.3	2.3	2.4	0.5	
Non-processed food	47	98.9	98.3	99.5	100.4	99.7	100.4	2.0	0.9	1.0	1.0	-0.1	-0.4	0.7	
Seasonal food	26	97.9	97.2	98.1	100.2	99.1	100.1	2.5	0.7	0.2	1.1	-0.9	-1.3	1.0	
Meat	21	100.1	99.5	101.0	100.6	100.3	100.7	1.3	1.1	2.0	0.8	0.9	0.7	0.3	
Alcoholic beverages & tobacco	44	100.3	100.7	100.7	100.2	101.0	100.8	1.4	1.9	2.5	2.5	2.3	1.6	-0.2	
Industrial goods	408	100.5	100.5	100.5	100.6	99.2	99.7	0.3	0.2	-0.2	-0.3	-0.1	0.4	0.6	
Energy	67	105.1	105.8	105.0	104.0	105.5	106.3	15.4	13.9	11.1	10.2	12.8	12.5	0.7	
Electricity, gas & miscellaneous energy	30	100.0	103.0	105.8	107.3	108.3	109.1	11.8	13.6	14.0	12.8	12.0	12.2	0.8	
Liquid fuels, vehicle fuels & lubricants	37	109.6	108.4	104.2	101.1	102.9	103.6	18.3	13.9	8.4	7.8	13.4	12.7	0.7	
Non-energy industrial goods	341	99.7	99.6	99.7	100.0	98.0	98.5	-2.2	-2.1	-2.0	-2.1	-2.3	-1.7	0.5	
Clothing & footwear goods	64	99.8	99.9	100.4	100.0	95.9	95.8	-5.4	-5.4	-5.3	-4.3	-4.8	-4.8	-0.1	
Housing goods	82	100.2	99.5	100.3	102.3	97.9	98.5	0.3	0.3	0.4	0.4	-0.4	-0.2	0.5	
Household goods	66	100.2	99.3	100.4	102.9	97.3	98.0	-0.7	-0.6	-0.4	-0.4	-1.3	-1.0	0.7	
Water supply; materials for maintenance & repair	16	100.0	100.4	100.1	100.3	100.6	100.5	3.2	2.9	2.6	2.9	3.2	3.2	-0.2	
Medical products, appliances & equipment	11	100.0	100.4	100.2	98.7	99.2	99.4	-0.1	0.3	0.1	-0.7	-0.7	-0.6	0.2	
Vehicles, spare parts & accessories	58	99.7	99.7	99.5	99.4	99.8	99.9	-0.6	-0.2	-0.3	-0.3	-0.3	-0.6	-	
Recreational goods	91	99.0	99.1	98.7	98.6	97.5	98.7	-4.1	-4.1	-4.1	-4.5	-4.5	-2.5	1.2	
Audio-visual goods	26	96.3	96.0	94.3	94.9	94.5	92.9	-14.1	-13.2	-14.4	-13.0	-11.2	-11.4	-1.7	
Other recreational goods	65	100.0	100.2	100.3	99.9	98.5	100.9	-0.2	-0.5	-0.1	-1.2	-2.1	1.0	2.4	
Miscellaneous goods	35	99.7	99.9	99.9	99.9	99.9	100.7	-0.6	-1.0	-0.8	-1.0	-0.2	0.2	0.9	
All services	446	100.9	101.2	101.0	101.5	101.7	101.8	4.5 [†]	4.4	4.1	3.8	3.9	3.7	0.1	
Housing services	69	101.0	101.1	101.2	101.3	101.6	101.7	4.4	4.0	3.9	4.0	3.9	3.9	0.1	
Actual rentals for housing	47	100.9	100.9	101.0	101.1	101.2	101.4	3.9	3.4	3.3	3.3	3.2	3.3	0.1	
Primary housing services	15	101.4	101.7	101.9	101.9	102.4	102.0	6.2	6.1	6.1	6.0	6.3	5.8	-0.3	
Other housing services	7	100.8	101.1	101.3	101.7	102.5	102.8	4.0	4.0	3.8	4.1	4.0	4.2	0.3	
Travel & transport services	67	101.1	101.1	99.5	101.8	101.6	101.5	6.3	7.2	5.8	3.4	6.1	4.8	-0.1	
Services for personal transport equipment	30	101.2	101.7	102.3	102.7	104.2	104.2	6.3	6.5	6.6	6.5	6.4	6.3	-	
Transport services	32	101.2	100.8	96.8	101.3	99.5	99.6	7.3	9.1	6.1	1.2	7.2	4.5	0.1	
Transport insurance	5	99.0	99.4	100.5	99.5	99.3	97.3	-2.8	-1.8	-0.7	-1.9	-3.3	-2.8	-1.9	
Communication	25	99.8	99.5	99.6	99.4	100.9	101.0	-1.2	-1.6	-1.2	-1.0	0.5	0.4	0.1	
Recreational & personal services	199	100.7	101.0	101.0	101.3	101.2	101.4	3.2	3.3	3.1	3.1	2.9	2.9	0.3	
Package holidays & accommodation	45	100.5	100.5	100.1	100.2	100.1	100.7	2.5	2.0	1.3	1.2	0.9	1.3	0.5	
Other recreational & personal services	154	100.8	101.1	101.3	101.6	101.5	101.7	3.4	3.6	3.6	3.7	3.4	3.4	0.2	
Catering services	116	100.7	101.0	101.1	101.3	101.4	101.6	3.3	3.3	3.2	3.2	3.1	3.1	0.2	
Non-catering recreational & personal services	38	101.2	101.4	101.7	102.3	101.7	101.7	3.8	4.5	4.8	5.1	4.3	4.1	-	
Miscellaneous & other services	86	101.3	102.2	102.4	102.5	103.2	103.2	7.5	6.6	6.6	6.6	5.6	5.6	-	
Miscellaneous services	56	101.4	102.0	102.3	102.5	103.3	103.3	8.6	7.3	7.3	7.3	6.0	6.0	-	
Medical services	13	101.5	101.7	101.8	101.9	102.7	102.8	6.1	5.6	5.6	5.5	5.3	5.3	0.1	
Education	17	100.8	103.3	103.3	103.3	103.3	103.3	4.7	4.7	4.7	4.7	4.7	4.7	-	
Special aggregates															
Durables	124	99.4	99.0	99.0	100.1	97.6	97.8	-2.4	-2.1	-2.1	-2.3	-2.8	-2.8	0.2	
Semi-durables	137	99.9	99.8	100.1	99.8	96.8	97.7	-3.9	-3.8	-3.9	-3.7	-4.0	-2.7	0.9	
Non-durables	80	99.7	100.2	100.2	100.2	100.7	101.0	0.8	0.8	1.0	0.9	1.2	1.6	0.3	
Seasonal food	26	97.9	97.2	98.1	100.2	99.1	100.1	2.5	0.7	0.2	1.1	-0.9	-1.3	1.0	
Non-seasonal food	64	100.3	100.2	100.9	100.9	100.8	101.2	1.9	2.0	2.4	1.9	1.9	1.8	0.4	
Energy, food, alcoholic beverages & tobacco	213	101.3	101.5	101.6	101.5	102.0	102.5	5.4	4.9	4.4	4.2	4.6	4.3	0.5	
Energy & unprocessed food	114	102.3	102.4	102.5	102.4	102.9	103.7	9.1	7.8	6.4	5.9	6.8	6.5	0.7	
Energy & seasonal food	93	102.9	103.1	102.9	102.9	103.6	104.4	11.3	9.8	7.7	7.4	8.4	8.1	0.8	
Tobacco	26	100.2	101.1	101.7	101.7	101.8	101.8	3.2	4.1	4.8	4.7	4.0	3.5	-0.1	
Housing, water, electricity, gas & other fuels	108	100.7	101.7	102.3	102.8	103.3	103.6	6.5	6.5	6.5	6.4	6.3	6.4	0.3	
Education, health & social protection ²	53	100.9	102.0	102.0	101.7	102.3	102.3	4.3	4.3	4.2	3.9	3.8	3.8	0.1	
All items excluding															
Energy	933	100.3	100.4	100.5	100.8	100.2	100.5	1.7	1.7	1.6	1.4	1.3	1.4	0.3	
Energy, food, alcoholic beverages & tobacco	787	100.4	100.5	100.5	100.9	100.1	100.4	1.7	1.7	1.5	1.3	1.3	1.4	0.3	
Energy & unprocessed food	886	100.4	100.5	100.5	100.9	100.2	100.5	1.7	1.7	1.6	1.5	1.4	1.5	0.3	
Seasonal food	974	100.6	100.8	100.8	101.1	100.6	100.9	2.5	2.4	2.2	1.9	2.0	2.1	0.3	
Energy & seasonal food	907	100.4	100.5	100.5	100.9	100.2	100.5	1.7	1.7	1.6	1.4	1.4	1.5	0.3	
Tobacco	974	100.6	100.7	100.7	101.0	100.5	100.8	2.4	2.3	2.1	1.8	1.9	2.0	0.3	
Alcoholic beverages & tobacco	956	100.6	100.7	100.7	101.1	100.5	100.9	2.5	2.4	2.1	1.9	1.9	2.1	0.4	
Liquid fuels, vehicle fuels & lubricants	963	100.3	100.5	100.6	101.0	100.4	100.7	2.0	2.0	1.9	1.7	1.6	1.7	0.3	
Housing, water, electricity, gas & other fuels	892	100.6	100.6	100.5	100.8	100.2	100.5	2.0	1.9	1.6	1.4	1.4	1.5	0.3	
Education, health & social protection	947	100.6	100.7	100.7	101.0	100.4	100.8	2.4	2.2	2.0	1.8	1.8	1.9	0.4	

Key: - zero or negligible

[†] This series has been revised. See background note 10 for details.

² The coverage of this special aggregate has changed extensively since January 2000, when Social protection was first included and extensions to the Education and Health divisions also took effect. Health was further extended with effect from January 2001. Details are given in a series of Economic Trends articles available on the National Statistics website: www.statistics.gov.uk/cpi

¹ For further information on the composition of the indices shown, see 'The Consumer Prices Index: Goods and Services Indices and Special Aggregates', which can be downloaded from: www.statistics.gov.uk/cci/article.asp?id=1060

6 CPI goods and services: the latest three years

Percentage change over 12 months

	Goods components					Services components					All services
	Food & non-alcoholic beverages	Alcoholic beverages & tobacco	Energy ¹	Non-energy industrial goods ²	All goods	Housing services ³	Travel & transport services ³	Recreational & personal services ³	Communication	Miscellaneous & other services ³	
Weights											
2006	CHZR 102	CHZS 44	A9F3 67	A9ER 341	ICVH 554	A9FG 69	A9FJ 67	A9FL 199	CHZY 25	A9FQ 86	ICVI 446
Monthly											
2003 Feb	D7G8 -0.5	D7G9 1.5	DKL5 4.9	DKK3 -2.3	D7NM -0.8	DKN2 2.9	DKN5 6.2	DKN7 4.9	D7GF 0.2	DKO4 4.5	D7NN 4.4
Mar	-0.3	1.5	6.1	-2.4	-0.8	2.9	5.7	4.7	0.9	4.3	4.3
Apr	0.3	2.6	2.5	-2.2	-0.8	2.4	8.7	4.0	0.7	3.3	4.1 [†]
May	1.2	1.9	0.9	-2.2	-0.8 [†]	2.3	6.8	3.7	1.0	3.3	3.7
Jun	1.4	2.2	1.0	-2.2	-0.8	2.2	5.4	3.3	-	3.6	3.3
Jul	1.5	1.6	1.6	-1.9	-0.6	2.5	5.0	3.2	1.0	4.7	3.5
Aug	1.6	2.5	2.3	-1.5	-0.1	2.5	4.5	2.7	0.7	4.6	3.1
Sep	2.2	1.8	2.0	-1.8	-0.3	2.5	6.5	2.5	1.1	4.8	3.4
Oct	2.2	2.1	1.9	-1.7	-0.2	2.6	6.4	2.3	0.4	4.2	3.2
Nov	2.6	1.7	2.4	-1.9	-0.3	2.5	7.0	2.1	-0.4	4.3	3.2
Dec	2.9	1.8	2.8	-1.8	-0.1	2.5	5.1	2.0	-0.3	4.2	2.8
2004 Jan	2.6	1.7	2.2	-1.6	-0.1	2.6	5.8	1.7	-0.3	6.0	3.1
Feb	2.2	1.7	1.7	-1.9	-0.4	2.7	5.8	1.7	0.2	6.0	3.2
Mar	1.9	1.9	0.9	-2.1	-0.6	2.7	4.8	1.8	0.2	6.1	3.1
Apr	1.3	2.0	2.8	-1.9	-0.5	3.0	2.4	2.2	0.8	5.9	3.0
May	1.0	2.0	7.5	-2.0	-0.1	3.0	4.4	2.3	0.6	5.8	3.3
Jun	0.8	1.9	7.9	-1.7	0.1	3.1	4.6	2.3	0.9	5.5	3.3
Jul	0.1	2.1	7.1	-1.9	-0.3	3.2	5.3	2.5	-1.1	5.0	3.4
Aug	-0.2	1.9	7.1	-2.3	-0.6	3.2	5.7	2.7	-1.1	5.0	3.5
Sep	-0.7	2.2	7.1	-2.5	-0.8	3.2	4.8	2.6	-2.6	5.0	3.2
Oct	-0.6	2.0	9.3	-2.4	-0.6	3.4	4.2	2.8	-2.1	4.9	3.2
Nov	-0.5	2.2	10.9	-2.4	-0.3	3.5	5.7	2.9	-1.9	5.0	3.5
Dec	-0.1	2.1	10.6	-2.0	-0.1	3.5	6.3	3.0	-2.2	5.0	3.7
2005 Jan	0.4	2.5	9.0	-2.2	-0.2	3.5	5.3	3.2	-2.3	5.5	3.7
Feb	0.8	2.9	9.6	-2.6	-0.2	3.5	5.8	3.3	-2.7	5.6	3.8
Mar	1.7	2.2	10.1	-2.2	0.2	3.6	6.8	3.2	-2.9	5.5	3.9
Apr	1.0	2.0	11.5	-2.2	0.1	4.3	4.9	3.4	-3.2	6.5	4.0
May	1.4	2.3	8.3	-2.2	-0.1	4.3	6.3	3.4	-3.6	6.6	4.2
Jun	2.2	2.3	8.7	-2.1	0.2	4.2	6.0	3.1	-2.9	6.8	4.1
Jul	1.7	2.2	11.2	-1.9	0.5	4.4	6.9	3.2	-2.5	7.7	4.5
Aug	2.2	1.8	12.4	-2.1	0.6	4.4	7.5	3.1	-2.1	7.7	4.6
Sep	2.0	1.4	15.4	-2.2	0.7	4.4	6.3	3.2	-1.2	7.5	4.5
Oct	1.5	1.9	13.9	-2.1	0.6	4.0	7.2	3.3	-1.6	6.6	4.4
Nov	1.7	2.5	11.1	-2.0	0.4	3.9	5.8	3.1	-1.2	6.6	4.1
Dec	1.7	2.5	10.2	-2.1	0.3	4.0	3.4	3.1	-1.0	6.6	3.8
2006 Jan	1.2	2.3	12.8	-2.3	0.3	3.9	6.1	2.9	0.5	5.6	3.9
Feb	1.1	1.6	12.5	-1.7	0.6	3.9	4.8	2.9	0.4	5.6	3.7

Key: - zero or negligible

1 Comprises 'Electricity, gas and other fuels' (group 04.5) and 'Fuels and lubricants' (class 07.2.2).

2 Comprises all other goods elements of the CPI. For further information, see 'The Consumer Prices Index: Goods and Services Indices and Special Aggregates', which can be downloaded from: www.statistics.gov.uk/cci/article.asp?id=1060

3 For further information on all of these services components, see 'The Consumer Prices Index: Goods and Services Indices and Special Aggregates', which can be downloaded from: www.statistics.gov.uk/cci/article.asp?id=1060

[†] This series has been revised. See background note 10 for details.

Source: National Statistics

7 HICP¹ - International comparisons: EU countries

Percentage change over 12 months

	Austria	Belgium	Cyprus	Czech Republic	Denmark	Estonia	Finland	France	Germany	Greece	Hungary	Irish Republic	Italy	Latvia
	D7SK	D7SL	D7RO	D7RP	D7SM	D7RQ	D7SN	D7SO	D7SP	D7SQ	D7RR	D7SS	D7ST	D7RS
2003	1.3	1.5	4.0	-0.1	2.0	1.4	1.3	2.2	1.0	3.5	4.7	4.0	2.8	2.9
2004	2.0	1.9	1.9	2.6	0.9	3.0	0.1	2.3	1.8	3.0	6.8	2.3	2.3	6.2
2005	2.1	2.5	2.0	1.6	1.7	4.1	0.8	1.9	1.9	3.5	3.5	2.2	2.2	6.9
2004 Feb	1.5	1.2	1.4	2.0	0.6	0.6	0.4	1.9	0.8	2.6	7.0	2.2	2.5	4.3
Mar	1.5	1.0	0.1	2.2	0.4	0.7	-0.4	1.9	1.1	2.9	6.6	1.9	2.3	4.7
Apr	1.5	1.7	0.1	2.0	0.5	1.5	-0.4	2.4	1.7	3.1	7.0	1.7	2.3	5.0
May	2.1	2.4	1.2	2.6	1.1	3.7	-0.1	2.8	2.1	3.1	7.8	2.1	2.3	6.1
Jun	2.3	2.0	2.4	2.7	0.8	4.4	-0.1	2.7	2.0	3.0	7.5	2.5	2.4	6.1
Jul	2.1	2.1	2.9	3.0	1.1	4.0	0.2	2.6	2.1	3.1	7.2	2.5	2.3	6.7
Aug	2.2	2.0	2.8	3.1	0.8	3.9	0.3	2.5	2.1	2.8	7.2	2.5	2.4	7.8
Sep	1.8	1.8	1.8	2.8	0.9	3.8	0.2	2.2	2.0	2.9	6.7	2.4	2.2	7.7
Oct	2.4	2.7	2.0	3.1	1.5	4.0	0.6	2.3	2.3	3.3	6.4	2.5	2.1	7.2
Nov	2.3	2.3	2.6	2.6	1.0	4.4	0.2	2.2	2.0	3.2	5.8	2.7	2.1	7.2
Dec	2.5	1.9	3.9	2.5	0.9	4.8	0.1	2.3	2.3	3.1	5.5	2.4	2.4	7.4
2005 Jan	2.4	2.0	2.8	1.5	0.8	4.2	-0.2	1.6	1.6	4.2	4.0	2.1	2.0	6.7
Feb	2.3	2.3	2.4	1.4	1.0	4.6	-	1.9	1.9	3.2	3.4	2.1	2.0	7.0
Mar	2.4	2.8	2.4	1.1	1.3	4.8	0.9	2.1	1.6	2.9	3.3	1.9	2.2	6.6
Apr	2.3	2.4	2.7	1.4	1.7	4.7	1.2	2.0	1.4	3.3	3.8	2.2	2.1	7.1
May	2.0	2.3	2.1	0.9	1.2	2.9	0.6	1.7	1.6	3.2	3.5	2.1	2.3	6.5
Jun	2.0	2.7	1.5	1.3	1.7	3.2	1.0	1.8	1.8	3.2	3.7	1.9	2.1	6.6
Jul	2.1	2.7	1.3	1.4	1.8	3.9	0.9	1.8	1.8	3.9	3.6	2.2	2.1	6.3
Aug	1.9	2.9	1.5	1.4	2.4	4.2	1.0	2.0	1.9	3.6	3.5	2.1	2.1	6.3
Sep	2.6	3.0	2.1	2.0	2.3	4.9	1.1	2.4	2.5	3.8	3.6	2.7	2.2	7.4
Oct	2.0	2.2	2.2	2.4	1.9	4.5	0.8	2.0	2.3	3.7	3.1	2.6	2.6	7.7
Nov	1.7	2.3	2.0	2.2	1.8	4.0	1.0	1.8	2.2	3.4	3.3	2.2	2.4	7.6
Dec	1.6	2.8	1.4	1.9	2.2	3.6	1.1	1.8	2.1	3.5	3.3	1.9	2.1	7.1
2006 Jan	1.5	2.8	2.0	2.4	2.0	4.7	0.6	2.3	2.1	3.0	2.5	2.5	2.2	7.6
Feb	1.5*	2.8	2.3	2.4	2.1	4.5	0.6	2.0	2.1	3.1	2.3	2.7	2.2	7.0

	Lithuania	Luxembourg	Malta	Netherlands	Poland	Portugal	Slovakia	Slovenia	Spain	Sweden	United Kingdom ¹	EICP ² EU 25 average ³	Monetary Union Area average ⁴
	D7RT	D7SU	D7RU	D7SV	D7RV	D7SX	D7RW	D7RX	D7SY	D7SZ	D7G7	D7RY	D7SR
2003	-1.1	2.5	1.9	2.2	0.7	3.3	8.4	5.7	3.1	2.3	1.4	2.0	2.1
2004	1.2	3.2	2.7	1.4	3.6	2.5	7.5	3.7	3.1	1.0	1.3	2.0	2.1
2005	2.7	3.8	2.5	1.5	2.2	2.1	2.8	2.5	3.4	0.8	2.1	2.2	2.2
2004 Feb	-1.2	2.5	2.5	1.3	1.8	2.1	8.4	3.6	2.2	0.1	1.3	1.5	1.6
Mar	-0.9	2.0	2.1	1.2	1.8	2.2	8.0	3.5	2.2	0.4	1.1	1.5	1.7
Apr	-0.7	2.7	3.6	1.5	2.3	2.4	7.9	3.6	2.7	1.0	1.1	1.8	2.0
May	1.1	3.4	3.1	1.7	3.5	2.5	8.2	3.9	3.4	1.5	1.5	2.3	2.5
Jun	1.1	3.8	3.2	1.5	4.2	3.7	8.2	3.9	3.5	1.2	1.6	2.3	2.4
Jul	1.7	3.8	3.1	1.2	4.7	2.9	8.4	3.7	3.3	1.2	1.4	2.2	2.3
Aug	2.2	3.6	2.5	1.2	4.8	2.4	7.1	3.7	3.3	1.1	1.3	2.1	2.3
Sep	3.1	3.1	3.2	1.2	4.6	2.1	6.6	3.4	3.2	1.1	1.1	2.0	2.1
Oct	3.1	4.1	2.7	1.5	4.6	2.4	6.6	3.4	3.6	1.5	1.2	2.2	2.4
Nov	2.9	4.0	1.9	1.5	4.5	2.6	6.3	3.8	3.5	1.1	1.5	2.1	2.2
Dec	2.8	3.5	1.9	1.2	4.4	2.6	5.8	3.3	3.3	0.9	1.7	2.2	2.4
2005 Jan	2.8	2.9	1.9	1.2	3.8	2.0	3.2	2.3	3.1	0.5	1.6	2.0*	1.9*
Feb	3.2	3.2	2.5	1.5	3.6	2.1	2.7	2.8	3.3	1.2	1.7	2.1*	2.1*
Mar	3.2	3.5	2.6	1.5	3.4	2.3	2.4	3.3	3.4	0.5	1.9	2.1*	2.1*
Apr	3.2	3.7	2.0	1.3	3.1	2.0	2.7	2.7	3.5	0.4	1.9	2.1*	2.1*
May	1.9	3.7	2.4	1.0	2.1	1.8	2.4	2.1	3.0	0.2	1.9	2.0*	2.0*
Jun	2.0	3.2	2.1	1.5	1.4	0.6	2.6	1.7	3.2	0.8	2.0	2.0*	2.1*
Jul	1.9	4.0	1.7	1.5	1.5	1.9	2.1	2.0	3.3	0.7	2.3	2.1*	2.2*
Aug	2.3	4.3	2.5	1.6	1.8	2.5	2.1	1.8	3.3	1.1	2.4	2.2*	2.2*
Sep	2.5	4.7	2.0	1.7	1.9	2.7	2.3	3.2	3.8	1.1	2.5	2.5*	2.6*
Oct	3.0	5.0	3.0	1.5	1.6	2.6	3.5	3.2	3.5	0.9	2.3	2.4*	2.5*
Nov	2.9	3.6	4.3	1.6	1.1	2.5	3.6	2.1	3.4	1.2	2.1	2.3*	2.3*
Dec	3.0	3.4	3.4	2.0	0.8	2.5	3.9	2.4	3.7	1.3	1.9	2.1*	2.2*
2006 Jan	3.5	4.1	2.4	1.8	0.9	2.6	4.1	2.6	4.2	1.1	1.9	2.2*	2.4*
Feb	3.4	3.9	2.3	1.4*	0.9	2.9	4.3	2.3	4.1	1.1	2.0	2.2*	2.3*

Key: - zero or negligible .. Not available * Provisional

† Date of earliest revision † Estimated

1 Published as the CPI in the UK.

2 The EICP (European Index of Consumer Prices) is the official EU aggregate. It covers 15 member states until April 2004 and 25 member states from May 2004, the new member states being integrated using a chain index formula.

The EU 25 annual average for 2004 is calculated from the EU 15 average from January to April and the EU 25 average from May to December.

3 The coverage of the European Union was extended to include Cyprus, Czech Republic, Estonia, Hungary, Latvia, Lithuania, Malta, Poland, Slovakia and Slovenia with effect from 1 May 2004.

4 The coverage of the Monetary Union Area index was extended to include Greece with effect from Jan 2001.

Sources: National Statistics; Eurostat

	Weights	Index (January 1987=100)						Percentage change over 12 months						Percentage change over 1 month	
		2006	2005		2005		2006	2006	2005		2005		2006	2006	2006
			2005	2005	2005	2005			2005	2005	2005	2005			
ALL ITEMS	1 000	193.1	193.3	193.6	194.1	193.4	194.2	2.7	2.5	2.4	2.2	2.4	2.4	0.4	
Food and catering	155	172.7	172.7	173.4	174.1	174.1	174.9	2.0	1.6	1.8	1.7	1.5	1.5	0.5	
Alcohol and tobacco	96	241.1	241.8	241.9	241.6	242.5	242.8	2.5	2.7	2.9	2.9	2.8	2.5	0.1	
Housing and household expenditure	392	220.7	221.4	222.5	224.5	223.0	224.0	4.4	4.2	4.3	4.1	4.1	4.2	0.4	
Personal expenditure	90	131.6	131.8	132.2	131.9	129.1	130.0	-0.3	-0.3	-0.3	0.1	-0.2	-0.2	0.7	
Travel and leisure	267	181.0	180.8	179.6	179.0	179.4	179.9	1.6	1.6	1.0	0.2	1.3	1.3	0.3	
Consumer durables ¹	117	95.1	94.7	95.4	97.0	92.4	93.5	-2.7	-2.6	-2.3	-2.1	-2.2	-1.6	1.2	
Seasonal food	17	135.8	135.1	137.0	140.0	137.9	139.5	2.7	0.2	0.2	0.4	-2.3	-2.9	1.2	
Food excluding seasonal	88	156.4	156.2	156.8	157.0	157.2	158.1	1.3	1.2	1.5	1.3	1.4	1.6	0.6	
All items excluding seasonal food	983	194.5	194.8	195.0	195.5	194.8	195.6	2.6	2.6	2.5	2.2	2.5	2.5	0.4	
All items excluding food	895	200.0	200.4	200.5	201.0	200.3	201.0	2.8	2.7	2.6	2.3	2.6	2.6	0.3	
All goods	503	153.4	153.1	153.1	153.4	152.1	153.0	1.1	0.9	0.7	0.7	1.0	1.1	0.6	
All services	364	236.9	238.0	238.6	239.6	240.0	240.2	3.9	4.1	4.1	3.7	3.8	3.8	0.1	
Other indices															
All items excluding:															
mortgage interest payments (RPIX)	950	189.3	189.5	189.7	190.2	189.4	190.1	2.5	2.4	2.3	2.0	2.3	2.3	0.4	
housing	778	174.6	174.7	174.9	175.5	174.5	175.2	2.0	2.0	1.9	1.7	1.9	1.9	0.4	
mortgage interest payments and indirect taxes (RPIY) ²		180.5	180.7	180.9	181.5	180.7	181.4	2.5	2.3	2.3	2.0	2.3	2.3	0.4	
mortgage interest payments and council tax	911	186.6	186.8	187.0	187.5	186.7	187.4	2.4	2.3	2.2	2.0	2.2	2.2	0.4	
mortgage interest payments and depreciation ³	906	183.7	183.8	184.0	184.5	183.7	184.4	2.4	2.2	2.2	2.0	2.2	2.2	0.4	
Food	105	153.1	152.9	153.7	154.4	154.2	155.2	1.5	1.0	1.3	1.1	0.8	0.8	0.6	
Bread	4	158.3	159.0	159.8	159.3	159.7	162.9	2.5	3.0	3.8	3.6	4.8	6.1	2.0	
Cereals	3	144.3	143.7	144.8	146.2	145.5	144.5	3.7	2.6	3.9	3.9	2.9	-0.3	-0.7	
Biscuits and cakes	6	166.7	165.0	164.9	165.7	165.1	166.7	1.5	0.4	0.9	0.7	0.0	0.7	1.0	
Beef	4	133.1	131.2	133.0	131.6	133.3	134.2	-1.3	-1.7	0.4	-0.3	0.3	1.1	0.7	
Lamb	2	186.4	184.8	186.9	185.0	180.8	182.6	-1.5	-1.3	0.1	-1.6	-4.8	-2.9	1.0	
of which home-killed lamb	1	183.5	179.7	181.9	186.6	181.5	183.9	-4.1	-4.1	-1.8	1.5	-3.6	-0.5	1.3	
imported lamb	1	185.4	186.1	188.1	179.6	176.3	177.5	1.0	1.6	2.1	-4.5	-6.2	-5.3	0.7	
Pork	1	156.3	154.5	155.8	157.5	158.5	159.0	-1.5	-2.0	-0.8	-0.7	0.4	0.7	0.3	
Bacon	2	175.1	175.7	176.5	175.6	177.3	175.2	1.5	2.2	2.7	1.4	2.3	2.3	-1.2	
Poultry	4	112.8	111.8	115.0	112.6	109.1	110.3	-2.3	-3.0	-2.0	-4.4	-3.1	-3.2	1.1	
Other meat	7	145.0	143.1	146.2	146.0	145.7	146.4	3.2	1.9	2.8	1.8	1.3	1.0	0.5	
Fish	4	153.7	155.2	155.7	158.3	158.8	159.1	0.2	0.7	1.4	2.3	3.1	3.4	0.2	
of which fresh fish	2	163.2	165.0	166.0	164.8	164.7	167.6	1.1	2.3	3.6	1.5	2.4	4.2	1.8	
processed fish	2	144.7	145.9	145.9	152.0	153.0	150.8	0.1	-0.6	-0.8	3.8	3.8	2.6	-1.4	
Butter	1	172.1	171.6	171.0	171.5	171.6	171.0	-0.6	-0.7	-1.2	-0.6	-0.6	-1.6	-0.3	
Oils and fats	1	131.7	131.6	130.7	131.1	130.1	130.6	-6.2	-5.6	-5.9	-6.6	-7.2	-6.2	0.4	
Cheese	3	175.1	173.8	175.5	176.4	176.8	175.1	3.4	2.8	3.1	3.5	3.3	3.0	-1.0	
Eggs	1	161.8	162.4	162.9	162.5	160.7	157.8	2.3	2.4	2.0	1.8	0.8	-1.0	-1.8	
Milk, fresh	5	184.2	186.1	185.7	185.6	186.8	191.1	5.9	6.9	6.4	6.4	7.1	9.4	2.3	
Milk products	4	143.8	144.4	144.4	144.7	143.6	144.2	0.8	1.0	0.7	1.2	1.1	1.2	0.4	
Tea	1	144.9	145.4	144.8	145.1	145.5	149.9	-1.5	-1.8	-1.4	-1.0	0.0	3.5	3.0	
Coffee and other hot drinks	1	118.7	116.5	118.7	118.3	116.9	117.0	5.9	3.6	5.7	4.9	3.5	4.4	0.1	
Soft drinks	10	185.7	186.0	185.7	187.6	188.5	190.1	0.4	0.6	1.0	2.0	1.9	1.9	0.8	
Sugar and preserves	1	154.5	154.8	154.8	155.8	155.9	156.3	2.2	3.3	2.5	3.2	3.0	1.7	0.3	
Sweets and chocolates	10	184.8	185.6	186.2	185.9	186.5	187.4	3.0	3.4	3.7	3.6	3.7	4.4	0.5	
Potatoes	4	143.6	146.1	146.8	148.8	149.7	152.1	-4.7	-3.4	-2.6	-1.5	-1.9	-1.2	1.6	
of which unprocessed potatoes	1	125.9	130.8	134.4	137.6	136.0	137.3	-9.4	-7.0	-3.3	-3.4	-4.6	-4.6	1.0	
potato products	3	147.6	148.1	146.8	147.8	150.4	153.2	-1.5	-0.9	-2.1	-0.3	-0.1	0.8	1.9	
Vegetables other than potatoes	8	129.4	125.5	125.6	131.6	132.8	135.3	6.2	0.1	0.7	0.5	-3.6	-6.0	1.9	
of which fresh vegetables	6	116.4	111.8	111.6	118.5	119.8	122.9	6.5	-1.5	-1.0	-0.9	-5.9	-8.1	2.6	
processed vegetables	2	167.9	167.7	169.2	170.4	170.7	170.6	4.5	4.6	5.8	4.9	4.5	1.7	-0.1	
Fruit	7	144.0	145.5	149.2	148.8	142.7	142.7	3.7	3.2	0.7	2.1	0.6	1.0	-	
of which fresh fruit	6	140.1	141.9	146.1	145.7	139.1	139.0	4.2	3.4	0.6	2.1	0.9	1.3	-0.1	
processed fruit	1	153.2	152.8	152.3	152.6	150.6	150.9	1.3	1.3	1.5	1.9	-0.7	-1.0	0.2	
Other foods	11	149.7	149.9	149.5	149.3	150.0	149.7	-1.2	-1.4	-1.6	-2.5	-2.0	-2.2	-0.2	
Catering	50	240.6	241.5	241.9	242.4	242.7	243.0	3.2	3.2	3.0	3.0	2.9	2.8	0.1	
Restaurant meals	27	236.0	236.8	237.3	237.7	238.0	238.0	3.6	3.4	3.2	3.2	3.1	2.9	-	
Canteen meals	4	294.5	294.5	295.6	295.8	296.9	296.4	3.9	3.6	3.4	3.5	3.5	3.1	-0.2	
Take-aways and snacks	19	229.6	230.8	230.9	231.6	231.8	232.5	2.5	2.9	2.6	2.6	2.4	2.6	0.3	
Alcoholic drink	67	209.0	209.1	208.7	208.3	209.3	209.7	2.1	2.1	2.2	2.2	2.2	2.1	0.2	
Beer	36	227.1	227.1	227.0	227.1	227.4	228.0	2.6	2.6	2.6	2.6	2.6	2.6	0.3	
on sales	31	244.8	245.2	245.4	245.7	245.8	246.8	3.7	3.7	3.6	3.5	3.5	3.6	0.4	
off sales	5	148.8	147.5	146.4	145.6	146.8	145.8	-3.4	-3.4	-2.9	-2.5	-1.9	-2.5	-0.7	
Wines and spirits	31	185.0	185.3	184.6	183.6	185.4	185.5	1.5	1.5	1.8	1.5	1.8	1.4	0.1	
on sales	17	229.9	230.4	230.6	231.0	230.9	231.9	2.7	2.8	2.8	2.7	2.8	2.9	0.4	
off sales	14	156.2	156.4	154.8	152.7	156.0	155.6	-0.1	0.0	0.5	0.4	0.6	-0.3	-0.3	

Key: - zero or negligible

Index date for FEBRUARY: 14 February 2006

1 Consumer durables: Furniture, furnishings, electrical appliances and other household equipment, men's, women's and children's outerwear, footwear, audio-visual equipment, CDs and tapes, toys, photographic and sports goods.

2 The taxes excluded are council tax, VAT, duties, vehicle excise duty, insurance tax and air passenger duty. There are no weights available for RPIY.

3 This series has been constructed using the index for all items excluding mortgage interest payments prior to February 1995.

continued

	Weights	Index (January 1987=100)						Percentage change over 12 months						Percentage change over 1 month
		2006						2005 Sep	2005 Oct	2005 Nov	2005 Dec	2006 Jan	2006 Feb	2006 Feb
			2005 Sep	2005 Oct	2005 Nov	2005 Dec	2006 Jan							
Tobacco	29	329.4	332.2	334.4	334.5	334.7	334.6	3.2	4.0	4.7	4.8	4.0	3.5	-
Cigarettes	26	336.7	339.4	341.8	341.8	342.1	341.9	3.3	4.0	4.8	4.8	4.0	3.5	-0.1
Other tobacco	3	261.9	264.9	266.5	266.6	266.6	266.9	2.7	3.9	4.6	4.6	3.9	3.2	0.1
Housing	222	289.5	290.3	290.9	291.5	292.4	293.2	4.8	4.3	4.2	4.1	4.1	4.2	0.3
Rent	45	272.7	272.8	273.0	273.2	273.6	273.8	3.8	3.2	3.2	3.2	3.0	3.0	0.1
Mortgage interest payments	50	290.2	292.0	294.0	296.1	298.2	300.1	6.0	5.8	5.5	5.4	5.4	5.3	0.6
Depreciation (Jan 1995 = 100)	44	260.4	261.1	261.5	261.4	261.3	262.5	4.9	3.9	3.7	3.0	2.9	3.4	0.5
Council tax and rates	39	268.1	268.1	268.1	268.1	268.1	268.1	4.0	4.0	4.0	4.0	4.0	4.0	-
Water and other charges	12	335.7	335.7	335.7	335.7	335.7	335.7	11.3	11.3	11.3	11.3	11.3	11.3	-
Repairs and maintenance charges	12	300.9	303.0	303.9	304.1	307.9	308.3	6.0	5.8	5.8	5.5	5.7	5.6	0.1
Do-it-yourself materials	13	156.3	156.8	156.5	156.9	157.9	158.0	0.4	0.2	0.0	0.3	1.0	1.1	0.1
Dwelling insurance and ground rent	7	272.7	272.4	273.0	273.6	275.8	280.3	1.8	1.3	1.1	1.1	2.9	4.6	1.6
Fuel and light	33	161.2	166.0	169.1	171.7	173.3	174.9	13.5	14.6	14.6	14.2	13.4	13.8	0.9
Coal and solid fuels	1	175.4	182.9	184.4	184.9	185.0	185.2	8.5	9.0	8.5	7.9	7.6	7.0	0.1
Electricity	15	152.8	156.2	159.4	161.1	162.6	164.5	10.2	11.5	11.7	10.8	10.2	10.7	1.2
Gas	14	157.5	163.3	169.5	173.0	174.3	175.1	14.5	17.1	17.5	16.0	14.6	14.7	0.5
Oil and other fuels	3	262.3	272.1	247.5	254.9	261.6	266.2	32.9	25.0	20.3	31.1	33.2	35.1	1.8
Household goods	71	145.4	144.3	145.9	150.9	142.9	144.7	1.0	0.8	1.3	1.2	0.8	1.4	1.3
Furniture	26	162.5	159.9	164.4	178.2	158.5	159.7	2.7	2.6	4.3	4.4	2.9	3.0	0.8
Furnishings	11	157.9	157.1	159.2	161.3	153.8	158.0	1.0	1.0	1.4	-1.1	0.5	2.1	2.7
Electrical appliances	8	78.6	77.5	76.8	76.4	75.9	77.6	-5.1	-6.6	-7.4	-6.5	-4.5	-6.1	2.2
Other household equipment	5	140.9	140.6	141.4	142.1	138.0	139.7	-0.8	-0.3	-0.8	-0.3	-1.2	0.1	1.2
Household consumables	14	156.7	156.9	156.5	157.9	157.6	158.6	1.2	0.7	0.9	1.3	0.6	2.3	0.6
Pet care	7	165.5	165.5	166.1	166.7	166.8	167.3	3.1	3.2	3.2	3.5	3.1	3.2	0.3
Household services	66	185.3	186.2	186.4	186.7	187.8	187.5	2.8	2.5	2.6	2.8	3.0	2.8	-0.2
Postage	1	177.0	177.0	177.0	177.0	177.0	177.0	4.4	4.2	4.2	4.2	4.2	4.2	-
Telephones, telemessages, etc	24	88.5	88.4	88.5	88.6	89.7	89.7	-1.4	-1.6	-1.1	-0.8	0.7	0.4	-
Domestic services	12	279.0	279.3	280.2	281.1	283.6	284.2	5.3	5.0	4.9	4.8	4.4	4.6	0.2
Fees and subscriptions	29	262.8	266.1	266.1	266.6	266.4	265.0	5.3	4.9	4.9	5.2	4.5	4.0	-0.5
Clothing and footwear	49	96.2	96.2	96.7	96.3	92.6	93.3	-2.3	-2.4	-2.2	-1.3	-2.1	-2.2	0.8
Men's outerwear	10	98.1	97.9	98.1	98.4	93.8	95.4	-1.7	-2.4	-2.5	-1.8	-0.6	-0.2	1.7
Women's outerwear	17	71.2	71.2	71.7	71.4	67.8	68.4	-2.7	-2.2	-1.9	-0.6	-2.2	-1.9	0.9
Children's outerwear	6	87.0	88.8	90.2	90.3	86.9	85.8	-5.6	-4.0	-2.7	-0.4	-2.6	-4.7	-1.3
Other clothing	7	150.3	149.6	149.7	149.5	146.7	147.2	0.6	-0.5	-1.1	-0.7	-1.4	-1.5	0.3
Footwear	9	111.4	110.8	110.8	109.1	106.8	108.1	-1.9	-3.1	-3.2	-3.4	-3.3	-3.3	1.2
Personal goods and services	41	204.5	204.9	205.3	205.2	204.8	206.1	2.2	2.1	2.1	1.8	1.8	2.2	0.6
Personal articles	12	132.8	132.2	133.0	133.1	129.9	132.3	1.1	0.6	0.8	0.2	0.3	0.7	1.8
Chemists goods	16	187.4	188.6	188.6	188.0	189.1	189.4	0.7	1.0	1.0	0.6	1.0	1.5	0.2
Personal services	13	342.4	343.1	343.5	344.3	347.0	347.4	4.8	4.8	4.6	4.7	4.4	4.3	0.1
Motoring expenditure	140	187.7	187.1	185.5	183.2	185.5	185.1	3.1	2.7	1.6	1.1	2.5	1.9	-0.2
Purchase of motor vehicles	56	107.3	107.2	107.0	106.4	107.7	107.4	-4.5	-3.4	-3.0	-3.0	-3.1	-4.0	-0.3
Maintenance of motor vehicles	20	280.0	281.3	283.2	284.3	288.2	288.6	5.9	6.2	6.4	6.3	6.2	6.1	0.1
Petrol and oil	40	279.0	275.2	265.5	256.9	261.5	263.1	17.5	13.3	7.9	6.7	12.5	11.6	0.6
Vehicle tax and insurance	24	277.4	278.7	281.1	278.9	279.3	275.3	-1.9	-1.1	-0.2	-1.2	-1.6	-1.1	-1.4
Fares and other travel costs	19	228.4	228.5	222.8	229.9	225.3	225.4	4.8	6.6	5.1	-0.4	5.0	3.3	-
Rail fares ¹	5	239.1	240.1	241.4	240.7	245.1	248.0	2.9	4.2	3.6	3.3	1.3	2.5	1.2
Bus and coach fares	4	258.7	260.0	258.6	259.5	267.8	267.3	7.4	7.8	6.0	6.2	6.9	6.7	-0.2
Other travel costs	10	203.4	202.8	193.5	204.9	193.4	192.6	5.3	7.8	5.7	-3.1	6.2	2.4	-0.4
Leisure goods	41	93.3	93.3	93.1	93.2	92.6	94.2	-5.1	-5.0	-4.6	-4.7	-3.9	-2.0	1.7
Audio-visual equipment	9	19.1	18.8	18.7	18.7	18.4	18.6	-16.6	-16.8	-16.1	-15.4	-14.8	-13.1	1.1
CDs and tapes	4	98.1	99.9	99.3	100.4	102.9	99.2	-4.6	-2.3	-3.6	-2.4	2.1	-0.5	-3.6
Toys, photographic and sports goods	12	93.8	93.7	92.8	92.3	90.3	93.0	-2.7	-3.5	-3.3	-4.6	-5.7	-1.8	3.0
Books and newspapers	10	236.4	236.7	239.5	238.7	238.2	247.0	1.5	1.7	2.8	2.1	3.1	5.8	3.7
Gardening products	6	142.4	142.6	142.7	144.2	144.9	146.4	-2.7	-3.4	-2.4	-1.9	-0.3	-0.3	1.0
Leisure services	67	262.6	262.7	262.7	263.4	261.9	262.7	2.4	2.2	2.1	2.2	1.5	1.6	0.3
Television licences and rentals	12	159.7	162.0	162.1	162.1	161.7	161.7	-0.8	2.5	2.5	2.5	3.0	3.0	-
Entertainment and other recreation	17	341.7	340.4	342.5	346.3	342.1	343.1	7.6	6.4	7.1	7.9	6.2	5.8	0.3
Foreign holidays (Jan 1993 = 100)	30	168.4	167.9	167.3	167.1	166.3	166.7	-0.2	-1.0	-1.6	-1.8	-2.5	-2.3	0.2
UK holidays (Jan 1994 = 100)	8	158.7	159.0	158.9	159.4	159.5	161.3	6.4	6.2	5.9	5.8	5.6	6.5	1.1

Key: - zero or negligible

Source: National Statistics

1 As announced in the March First Release (www.statistics.gov.uk/pdfdir/cpi0405.pdf), an error exists in the Rail Fares Component of the RPI for January and February 2005.

9 RPI goods and services¹: the latest three years

Percentage change over 12 months

	Goods components					Services components				All services
	Food	Alcohol & tobacco	Petrol & oil ²	Other goods ³	All goods	Rent	Utilities ⁴	"Shop" services ⁵	"Non-shop" services ⁶	
Weights										
2006	CZGZ 105	CBVW 96	DOHB 43	DOHC 259	DOHD 503	CZXD 45	DOHE 71	DOHF 136	DOHG 112	DOHH 364
Monthly										
2003 Feb	CCYY -0.5	CZBK 2.4	DOGQ 9.1	DOGI -1.7	DOGD 0.1	CZCQ 1.8	DOGF 0.7	DOGG 5.1	DOGH 7.3	DOGE 4.5
Mar	-0.3	2.5	11.5	-1.8	0.3	1.9	1.0	4.9	7.3	4.5
Apr	0.3	2.9	4.5	-1.7	0.1	1.2	1.4	4.2	7.4	4.2
May	1.4	2.7	0.9	-1.6	0.1	1.1	1.7	4.0	6.9	4.1
Jun	1.6	2.7	0.9	-1.4	0.2	1.1	1.5	4.2	6.5	4.0
Jul	1.9	2.4	1.9	-1.4	0.3	1.5	2.0	4.3	6.6	4.2
Aug	1.8	2.7	3.1	-1.0	0.6	1.4	2.0	4.0	6.1	4.0
Sep	2.4	2.5	2.1	-1.0	0.5	1.5	2.2	4.0	4.7	3.6
Oct	2.4	2.6	1.8	-1.0	0.6	1.6	2.0	4.3	3.7	3.4
Nov	2.6	2.4	2.7	-1.1	0.6	1.5	1.8	4.3	2.9	3.0
Dec	2.9	2.4	3.1	-1.1	0.7	1.5	1.9	4.1	3.8	3.3
2004 Jan	2.6	2.3	1.3	-0.6	0.8	1.7	2.3	3.8	2.7	2.9
Feb	2.2	2.3	-0.4	-0.8	0.5	1.8	3.0	3.8	2.7	3.0
Mar	1.9	2.5	-2.8	-1.3	-0.1	1.9	3.6	3.8	2.3	3.1
Apr	1.3	2.6	-	-1.3	0.1	2.0	4.4	4.1	1.5	3.1
May	0.8	2.4	8.9	-1.5	0.5	2.1	4.3	4.2	1.6	3.1
Jun	0.5	2.4	9.5	-1.5	0.5	2.2	4.5	4.0	1.9	3.2
Jul	-0.1	2.5	8.1	-1.9	0.1	2.2	3.7	4.2	2.5	3.3
Aug	-0.2	2.4	8.1	-2.1	-0.1	2.3	3.6	4.3	2.9	3.4
Sep	-0.7	2.4	8.0	-2.5	-0.4	2.2	3.1	4.1	2.5	3.2
Oct	-0.5	2.4	11.1	-2.4	-0.2	2.6	3.6	4.0	2.6	3.3
Nov	-0.4	2.4	11.9	-2.6	-0.1	2.8	4.8	4.0	3.1	3.7
Dec	-0.1	2.4	9.1	-2.0	0.1	2.8	5.8	4.1	3.7	4.1
2005 Jan	0.3	2.7	5.2	-2.8	-0.5	3.0	6.4	4.2	2.7	4.0
Feb	0.8	3.0	6.4	-2.9	-0.4	3.1	5.9	4.3	2.3	3.8
Mar	1.4	2.4	8.1	-2.2	0.2	3.1	5.4	4.3	2.6	3.8
Apr	0.8	2.6	11.4	-2.5	0.1	3.6	5.8	4.3	2.7	4.0
May	1.3	2.7	5.5	-2.5	-0.1	3.6	5.7	4.3	3.0	4.1
Jun	2.0	2.7	6.6	-2.3	0.2	3.5	5.8	4.3	2.7	4.0
Jul	1.4	2.7	11.3	-1.7	0.7	3.8	5.8	4.3	2.7	4.0
Aug	1.7	2.5	13.7	-2.0	0.8	3.8	5.9	4.1	2.0	3.7
Sep	1.5	2.5	18.4	-1.9	1.1	3.8	6.5	4.4	2.0	3.9
Oct	1.0	2.7	14.0	-1.7	0.9	3.2	7.4	4.5	2.1	4.1
Nov	1.3	2.9	8.6	-1.4	0.7	3.2	7.7	4.6	1.8	4.1
Dec	1.1	2.9	8.0	-1.3	0.7	3.2	7.3	4.6	0.6	3.7
2006 Jan	0.8	2.8	13.6	-1.4	1.0	3.0	7.2	4.3	1.3	3.8
Feb	0.8	2.5	12.9	-1.1	1.1	3.0	7.4	4.2	1.2	3.8

Key: - zero or negligible

1 All components of the RPI are included in the above breakdown with the exception of mortgage interest payments, council tax and depreciation.

2 Including fuel oil.

3 The 'other goods' category comprises DIY materials, coal & solid fuels, household goods, clothing & footwear, personal articles, chemists goods, purchase of motor vehicles and leisure goods.

4 The 'utilities' category comprises water, electricity, gas, postage, telephone charges and rail fares.

5 The 'shop services' category comprises catering, repairs & maintenance charges, domestic services, personal services, maintenance of motor vehicles, TV licence & rentals and entertainment & recreation charges.

6 The 'non-shop services' category comprises dwelling insurance & ground rent, fees and subscriptions, vehicle tax and insurance, bus & coach fares, other travel costs, foreign holidays and UK holidays.

Source: National Statistics

10 A breakdown of the differences between CPI and RPI

		Difference between annual rates CPI - RPI		Breakdown of differences (unrounded figures) ¹					
		rounded figures	unrounded figures	housing components excluded from CPI			other differences in coverage of goods and services	formula effect ²	other differences including weights ³
		D7G2	D7G3	D7G4	D7G5	D7FU	D7FV	D7FW	D7FX
2001	Feb	-1.9	-1.85	-1.29	-0.74	-0.55	-0.15	-0.56	0.15
	Mar	-1.4	-1.36	-0.89	-0.34	-0.55	-0.11	-0.57	0.22
	Apr	-0.6	-0.60	-0.34	0.18	-0.53	0.03	-0.52	0.23
	May	-0.4	-0.43	-0.12	0.35	-0.47	0.04	-0.52	0.16
	Jun	-0.2	-0.21	0.12	0.53	-0.41	0.02	-0.50	0.15
	Jul	-0.2	-0.21	0.03	0.53	-0.51	0.18	-0.51	0.09
	Aug	-0.3	-0.24	0.03	0.56	-0.52	0.20	-0.49	0.02
	Sep	-0.4	-0.38	0.07	0.61	-0.55	-	-0.45	-
	Oct	-0.4	-0.36	0.22	0.76	-0.54	-0.04	-0.48	-0.05
	Nov	-0.1	-0.11	0.33	0.89	-0.56	-0.08	-0.44	0.09
	Dec	0.4	0.33	0.67	1.17	-0.50	0.02	-0.48	0.11
2002	Jan	0.3	0.32	0.75	1.22	-0.47	-0.04	-0.50	0.10
	Feb	0.5	0.44	0.79	1.20	-0.41	0.02	-0.42	0.05
	Mar	0.2	0.23	0.55	0.95	-0.40	0.09	-0.42	0.01
	Apr	-0.1	-0.12	0.32	0.84	-0.52	-0.02	-0.42	0.01
	May	-0.3	-0.30	0.04	0.66	-0.62	0.01	-0.42	0.07
	Jun	-0.4	-0.40	-0.27	0.46	-0.74	0.13	-0.42	0.15
	Jul	-0.4	-0.38	-0.28	0.48	-0.76	0.17	-0.41	0.15
	Aug	-0.4	-0.41	-0.33	0.47	-0.80	0.20	-0.43	0.15
	Sep	-0.7	-0.70	-0.47	0.38	-0.85	0.12	-0.43	0.07
	Oct	-0.7	-0.71	-0.72	0.25	-0.97	0.15	-0.41	0.27
	Nov	-1.1	-1.10	-0.94	0.13	-1.06	0.10	-0.43	0.17
	Dec	-1.2	-1.27	-1.33	-0.18	-1.15	0.40	-0.47	0.12
2003	Jan	-1.6	-1.61	-1.41	-0.19	-1.22	0.24	-0.42	-0.01
	Feb	-1.6	-1.60	-1.41	-0.20	-1.21	0.24	-0.43	-
	Mar	-1.6	-1.59	-1.28	-0.11	-1.17	0.18	-0.43	-0.07
	Apr	-1.7	-1.67	-1.44	-0.11	-1.32	0.12	-0.44	0.08
	May	-1.7	-1.73	-1.39	-0.12	-1.26	0.05	-0.44	0.05
	Jun	-1.8	-1.82	-1.32	-0.12	-1.20	-0.06	-0.46	0.01
	Jul	-1.8	-1.73	-1.24	-0.12	-1.13	-0.24	-0.43	0.19
	Aug	-1.5	-1.56	-1.08	0.01	-1.09	-0.31	-0.41	0.24
	Sep	-1.4	-1.35	-1.06	0.01	-1.07	0.01	-0.44	0.14
	Oct	-1.2	-1.29	-0.99	0.01	-0.99	0.04	-0.44	0.10
	Nov	-1.2	-1.17	-0.99	-0.02	-0.97	0.19	-0.43	0.07
	Dec	-1.5	-1.51	-1.11	-0.20	-0.91	-0.22	-0.42	0.23
2004	Jan	-1.2	-1.19	-1.07	-0.21	-0.86	0.02	-0.42	0.28
	Feb	-1.2	-1.23	-1.10	-0.21	-0.89	0.05	-0.43	0.26
	Mar	-1.5	-1.47	-1.47	-0.48	-0.99	0.07	-0.41	0.34
	Apr	-1.4	-1.36	-1.32	-0.50	-0.82	0.08	-0.43	0.30
	May	-1.3	-1.30	-1.36	-0.50	-0.86	0.13	-0.44	0.38
	Jun	-1.4	-1.46	-1.59	-0.69	-0.90	0.14	-0.43	0.42
	Jul	-1.6	-1.66	-1.82	-0.88	-0.94	0.15	-0.42	0.43
	Aug	-1.9	-1.89	-1.96	-1.03	-0.93	0.18	-0.47	0.36
	Sep	-2.0	-1.97	-2.13	-1.18	-0.95	0.20	-0.45	0.42
	Oct	-2.1	-2.07	-2.17	-1.19	-0.99	0.22	-0.46	0.34
	Nov	-1.9	-1.98	-2.11	-1.19	-0.92	0.24	-0.47	0.36
	Dec	-1.8	-1.84	-1.91	-1.00	-0.91	0.24	-0.49	0.32
2005	Jan	-1.6	-1.55	-1.94	-1.03	-0.92	0.23	-0.48	0.65
	Feb	-1.5	-1.50	-1.92	-1.03	-0.89	0.23	-0.51	0.69
	Mar	-1.3	-1.32	-1.64	-0.86	-0.79	0.22	-0.53	0.62
	Apr	-1.3	-1.22	-1.54	-0.86	-0.68	0.25	-0.52	0.59
	May	-1.0	-1.07	-1.43	-0.85	-0.58	0.27	-0.50	0.60
	Jun	-0.9	-0.87	-1.18	-0.67	-0.51	0.29	-0.52	0.54
	Jul	-0.6	-0.57	-0.89	-0.48	-0.40	0.31	-0.53	0.55
	Aug	-0.4	-0.37	-0.84	-0.48	-0.36	0.33	-0.49	0.64
	Sep	-0.2	-0.20	-0.43	-0.17	-0.27	0.30	-0.52	0.45
	Oct	-0.2	-0.17	-0.37	-0.17	-0.20	0.30	-0.52	0.42
	Nov	-0.3	-0.29	-0.36	-0.16	-0.21	0.27	-0.52	0.32
	Dec	-0.3	-0.30	-0.35	-0.16	-0.19	0.28	-0.51	0.29
2006	Jan	-0.5	-0.45	-0.29	-0.15	-0.14	0.30	-0.48	0.02
	Feb	-0.4	-0.39	-0.32	-0.15	-0.17	0.30	-0.51	0.14

1 The differences due to housing, coverage and formula effect are all calculated independently and are not additive.

Source: National Statistics

2 Difference due to use of different formulae to aggregate prices at the most basic level.

3 This difference is derived as a residual.

Chart for Table 1 – February 2006
CPI, RPI and other selected indices

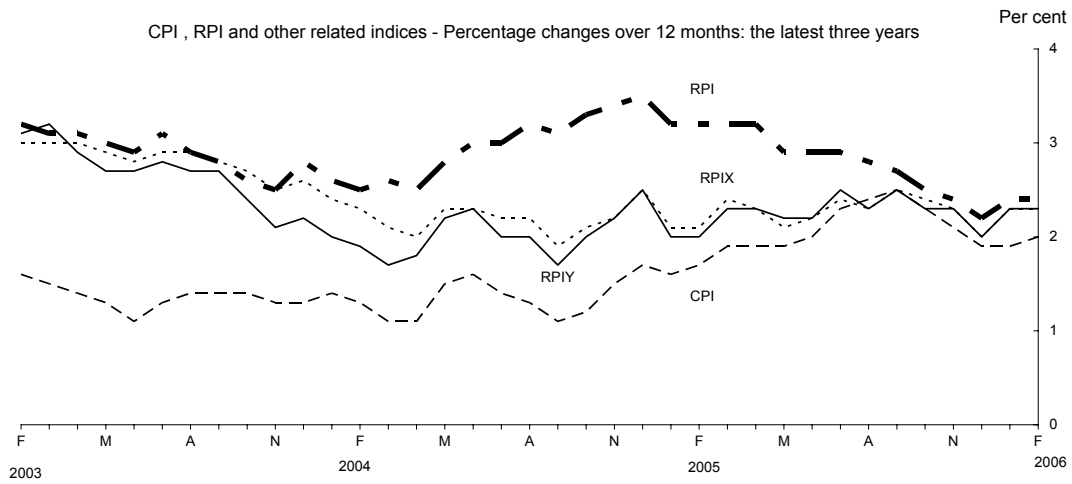


Chart for Table 6 – February 2006
CPI Goods and Services

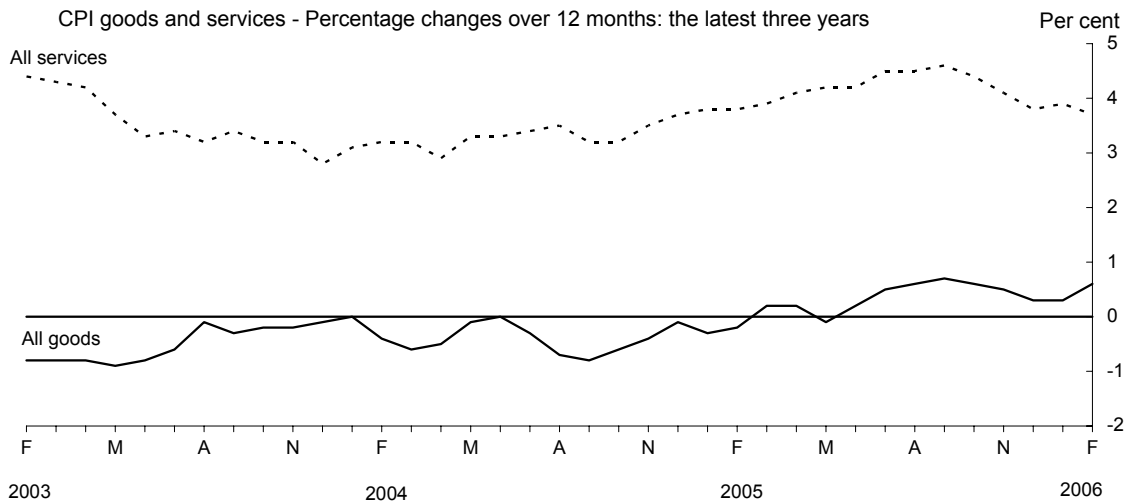


Chart for Table 9 – February 2006
RPI Goods and Services

