

12 February 2008

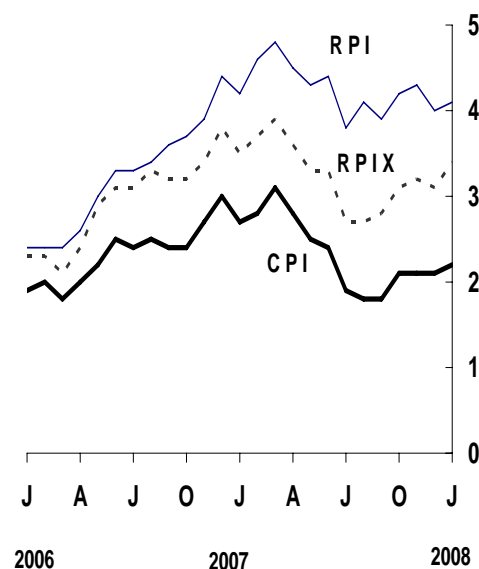
**Coverage**  
United Kingdom  
**Theme**  
The Economy

## Consumer price indices January 2008

In the year to January, the consumer prices index (CPI) rose by 2.2 per cent, up from 2.1 per cent in December.

In the year to January, the all items retail prices index (RPI) rose by 4.1 per cent, up from 4.0 per cent in December.

Over the same period, the all items RPI excluding mortgage interest payments index (RPIX) rose by 3.4 per cent, up from 3.1 per cent in December.



Issued by  
National Statistics  
1 Drummond Gate  
London SW1V 2QQ

Telephone  
Press Office 020 7533 5725  
Public Enquiries 0845 601 3034  
CPI/RPI Enquiries 01633 456900  
CPI/RPI recorded  
message 01633 456961  
E-mail cpi@ons.gov.uk

Statistician  
Rob Pike 01633 455375  
rob.pike@ons.gov.uk

Internet  
www.statistics.gov.uk

Next publication date  
18 March 2008

	Consumer prices index (CPI)		All items retail prices index (RPI)		All items RPI excluding mortgage interest payments (RPIX)	
	Index (2005 =100)	Per cent change over 12 months	Index (Jan 1987 =100)	Per cent change over 12 months	Index (Jan 1987 =100)	Per cent change over 12 months
2007 Aug	104.7	1.8	207.3	4.1	200.1	2.7
Sept	104.8	1.8	208.0	3.9	200.8	2.8
Oct	105.3	2.1	208.9	4.2	201.6	3.1
Nov	105.6	2.1	209.7	4.3	202.4	3.2
Dec	106.2	2.1	210.9	4.0	203.5	3.1
2008 Jan	105.5	2.2	209.8	4.1	202.7	3.4

**Main contributions to the change in the 12-month rate<sup>1</sup>**

**CPI**

The largest upward contribution to the change in the CPI annual rate came from transport costs. This was due to operation of personal transport equipment, where prices for fuels and lubricants rose this year but fell a year ago. The average price of petrol rose by 1.3 pence between December and January this year, to stand at 103.9 pence per litre, compared with a fall of 0.8 pence a year ago. There was an additional small upward effect from maintenance and repairs and a small downward effect from the purchase of vehicles.

There was also a large upward contribution from food and non-alcoholic beverages. The largest effect was from fruit, such as grapes and grapefruit, where prices fell less this year than last year.

There was a further large upward contribution from furniture and furnishings where price discounting had less effect than in the previous year, across a range of furniture. Also price reductions on kitchen units in January were less than the previous year (some sales had started in December).

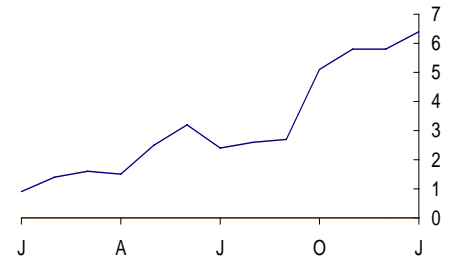
There was a small upward contribution from housing and household services, due to heating oil, where the price rose this year but fell a year ago.

There was a large downward contribution from clothing and footwear. Overall the prices of garments fell by more than last year. Also there was a small downward effect from footwear, with prices falling more than last year.

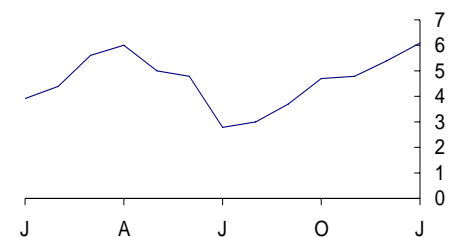
Small downward contributions came from:

- miscellaneous goods and services, where there was a small downward effect from personal care such as hair dryers and other small electrical goods, and from banking services, particularly banking charges and mortgage arrangement fees
- restaurants and hotels, where overall prices rose by less than the previous year
- tobacco, where prices rose by less than the previous January, and
- recreation and culture, where there was a large downward effect from audio-visual equipment and accessories which include flat screen televisions and pre-recorded DVDs and CDs. These were partly offset by an upward effect from digital cameras and camcorders. There were small downward effects from other recreational items, particularly computer games and sports equipment, and from package holidays. There was a large offsetting upward effect from books

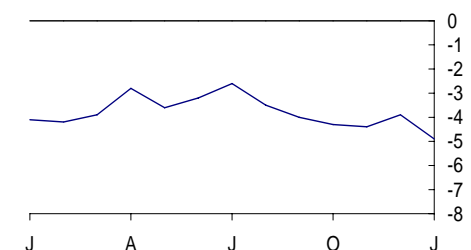
**Transport**  
CPI percentage changes over 12 months



**Food and non-alcoholic beverages**  
CPI percentage changes over 12 months



**Clothing and footwear**  
CPI percentage changes over 12 months



<sup>1</sup> The CPI and RPI use different classification systems. Background Note 14 shows how, for each of the two indices, the main categories contributing to changes in the 12-month rate relate to each other

**RPI**

The largest upward contribution to change in the RPI annual rate came from household goods, where furniture price reductions in January were not as great as in the previous year.

There was also a large upward contribution from motoring expenses which was mainly due to petrol and oil prices which rose this year but fell last year. There was also a small upward effect from maintenance of motor vehicles where, overall, prices rose by more than last year. There was a large, partially offsetting, downward effect from the purchase of motor vehicles, with prices rising by less than last year. There was a small downward effect from car insurance which increased by less than last year.

There was a further large upward contribution from food, particularly fresh fruit, where prices fell by less than last year. There was a small partially offsetting downward effect from vegetables other than potatoes, where prices increased by less than last year.

There were small upward contributions from:

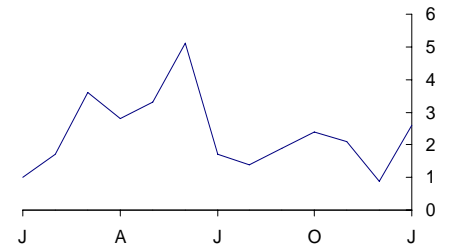
- fuel and light, due to heating oil, and
- household services, where fees and subscriptions rose this year but were broadly unchanged last year

The largest downward contribution to change in the RPI annual rate came from housing. There was a large downward effect from mortgage interest payments as lenders passed on December's quarter point decrease in the Bank rate.

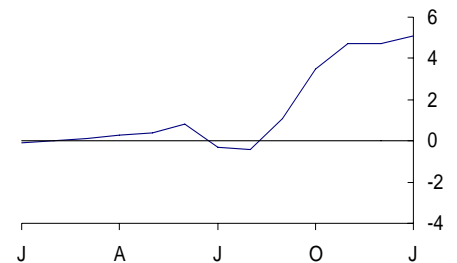
There were small downward contributions from:

- fares and other travel where the effect came from air fares, and
- tobacco, where cigarette prices rose by less than last year

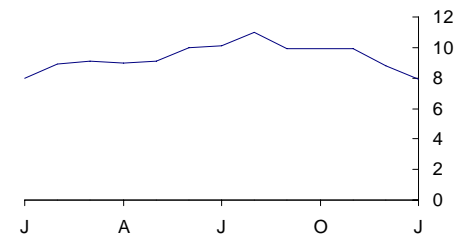
**Household goods**  
RPI percentage changes over 12 months



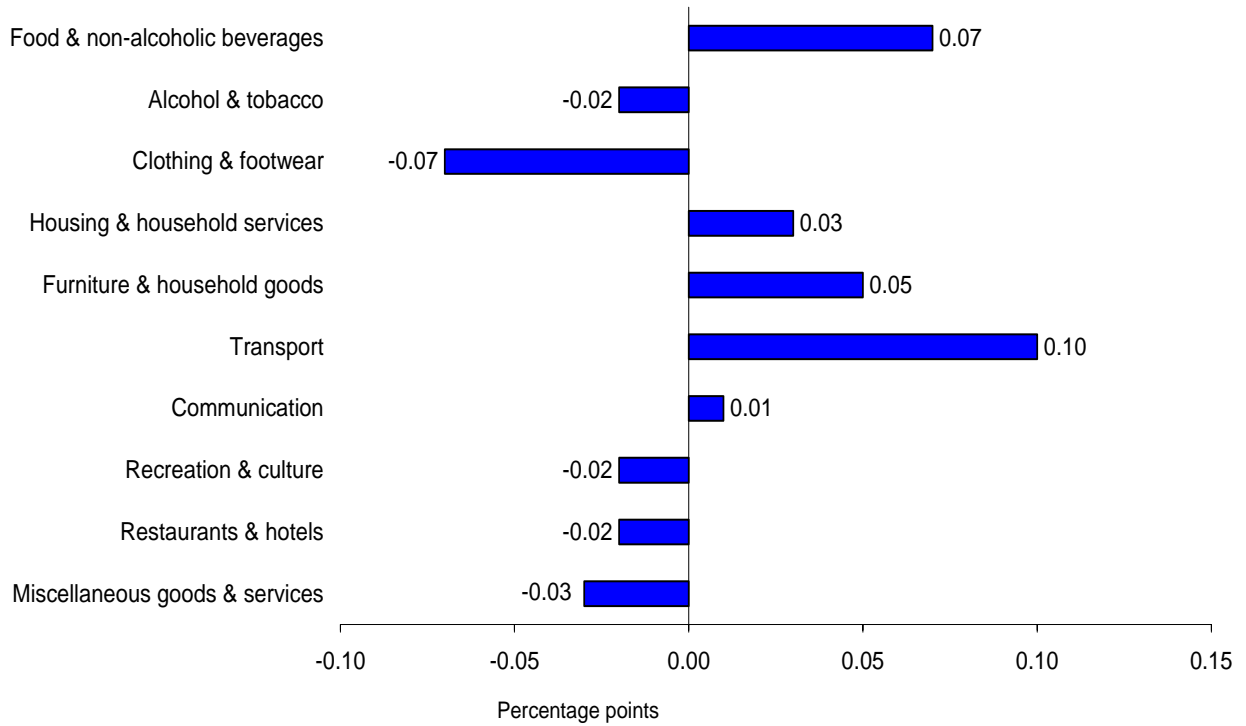
**Motoring expenditure**  
RPI percentage changes over 12 months



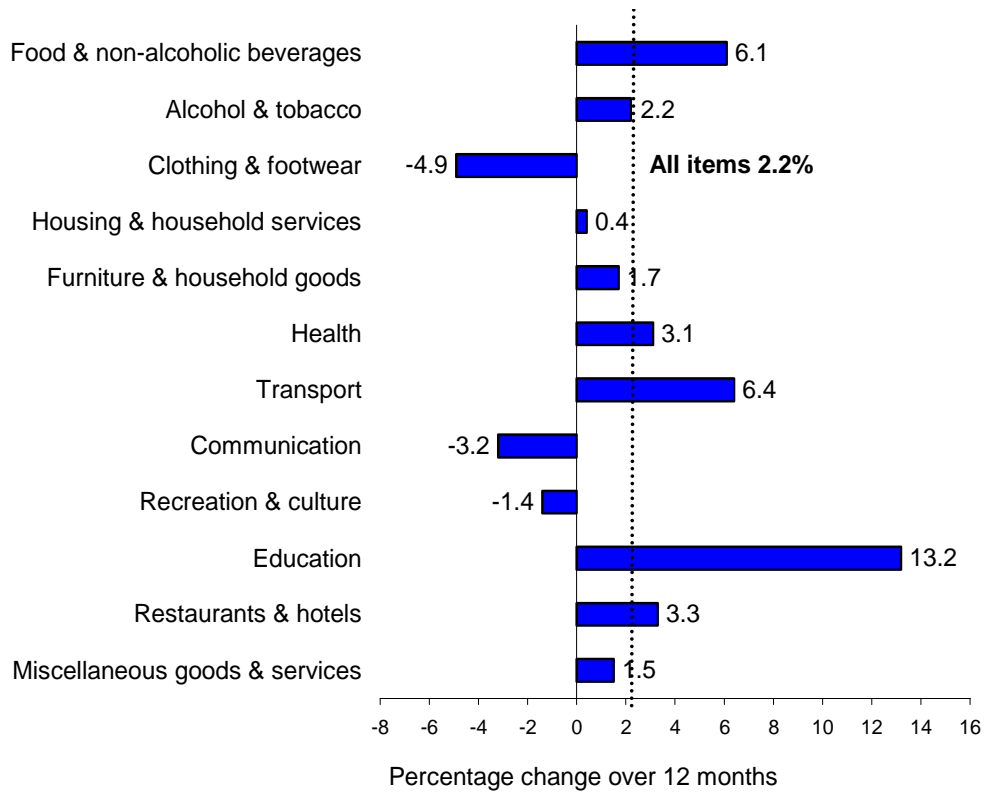
**Housing**  
RPI percentage changes over 12 months



**CPI main contributions<sup>1</sup> to the change in the all items 12-month rate between December 2007 and January 2008 (0.1 percentage points)**

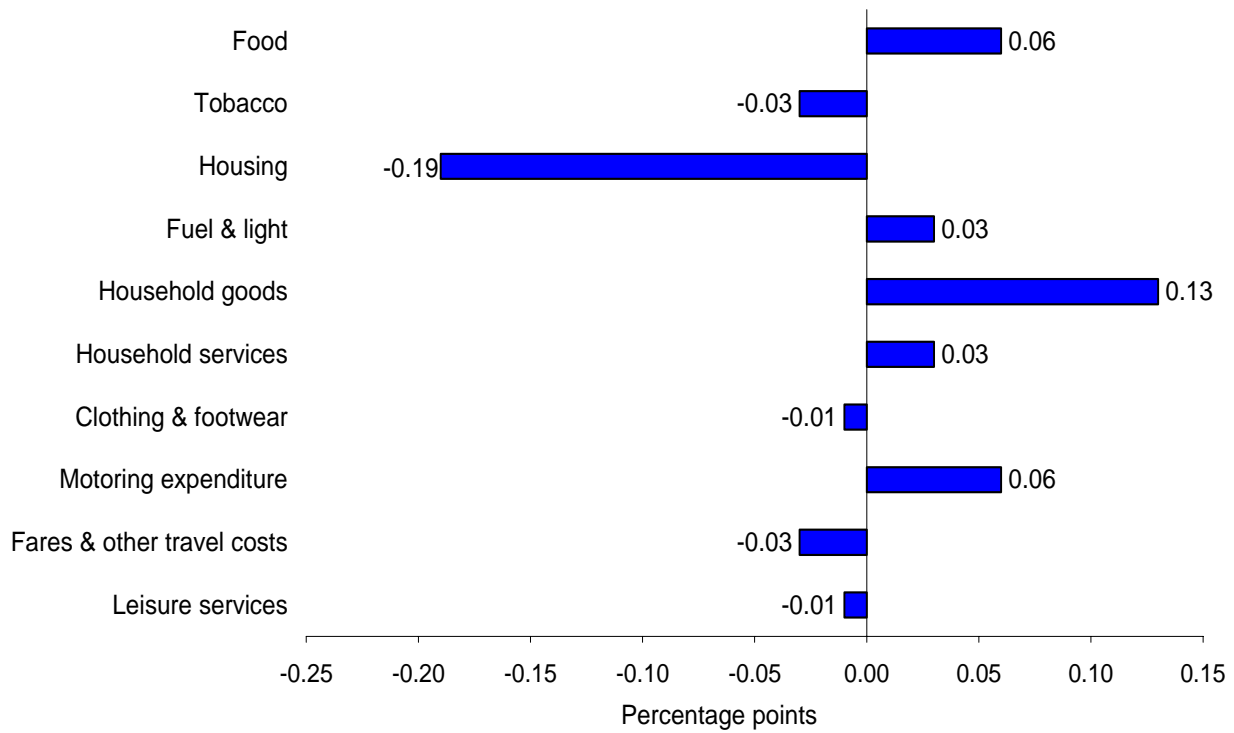


**CPI comparison of the 12-month percentage changes**

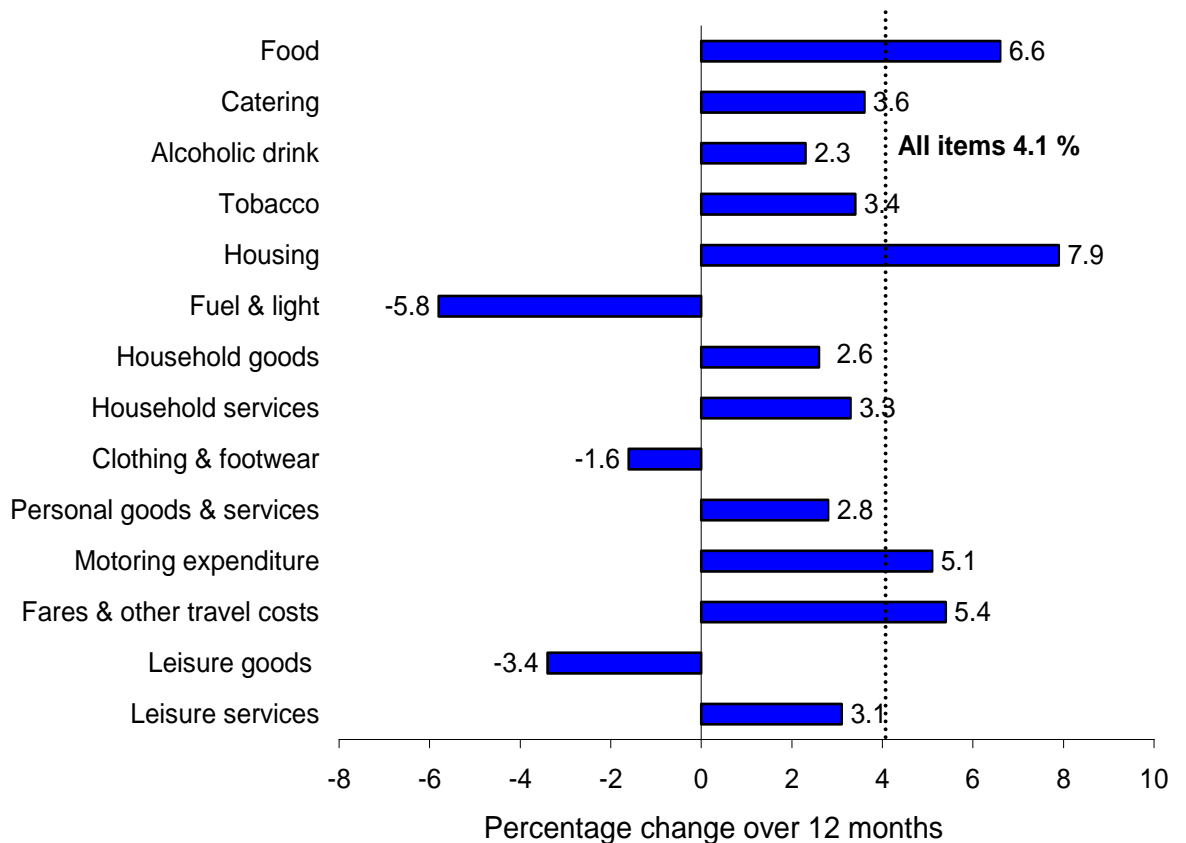


<sup>1</sup> Individual contributions to the change in the 12-month rate may not sum to the total due to rounding

**RPI main contributions<sup>1</sup> to the change in the all items 12-month rate between December 2007 and January 2008 (0.1 percentage points)**



**RPI comparison of 12-month percentage changes**



<sup>1</sup> Individual contributions to the change in the 12-month rate may not sum to the total due to rounding.

## BACKGROUND NOTES

### New this month

- 1 In line with usual practice, the January 2008 index includes updates to the published CPI weights. These can be found in table 3.

### New next month

- 2 In line with usual practice, the February 2008 index will include updates to the published RPI weights, and updates to the unpublished CPI and RPI item weights. The selection of goods and services that are priced to compile the CPI and RPI are reviewed annually. Changes to the basket this year, effective from the February indices, will be described in an article to be published on the National Statistics website on Monday 17 March.
- 3 Two changes will also be introduced with the February index. These relate to the measurement of gas and electricity and fresh fruit and vegetable prices.

Previously gas and electricity price changes were phased in over a four month period to reflect the fact that the tariff rate did not change for a customer until the day the meter was read (or the bill was estimated). It is clear that tariff increases are now implemented at the time the change is made, regardless of when the meter is read. As a result, the phasing in of price changes will cease with the publication in March. Any residual phasing effects from tariff changes which will not have fed through completely by February will also be introduced in full in the February index.

The item weights for fresh fruit and vegetables including potatoes have previously varied throughout the year to reflect differing spending patterns. However the higher level section weights have been fixed so that the principle of the fixed basket of goods is maintained. From the February index, the seasonal weights will be replaced by annual weights. The change reflects the fact that most types of fruit and vegetable are available in shops all year round.

### Relevance

- 4 The consumer prices index (CPI) is the main United Kingdom domestic measure of consumer price inflation for macroeconomic purposes. It forms the basis for the Government's inflation target that the Bank of England's Monetary Policy Committee (MPC) is required to achieve.
- 5 Internationally, the CPI is known as the Harmonised Index of Consumer Prices (HICP). HICPs are calculated in each Member State of the European Union, according to rules specified in a series of European Regulations developed by Eurostat in conjunction with the EU Member States. HICPs are used to compare inflation rates across the European Union. Since January 1999 it has also been used by the European Central Bank (ECB) as the measure of price stability across the euro area.
- 6 The retail prices index (RPI) is the most long-standing general purpose measure of inflation in the United Kingdom and is available from June 1947. It is used for a variety of purposes by both government and external users including the indexation of various incomes and prices and the uprating of pensions, benefits and index-linked gilts.

### Methodology

- 7 The CPI and the RPI are compiled using the same underlying price data, based on a large and representative selection of around 650 individual goods and services for which price movements are measured in around 150 randomly selected areas throughout the UK. Around 120,000 separate price quotations are used every month to compile the indices. The outlets in which the prices are collected are selected randomly. Expenditure weights are held constant for one year at a time.
- 8 The selection of goods and services that are priced to compile the CPI and RPI is reviewed annually. The contents of the 2007 basket are described in an article published on the National Statistics website at:  
<http://www.statistics.gov.uk/cci/article.asp?ID=1746>  
The expenditure weights used to compile the indices are also updated each year. Additional details of the updated CPI and RPI weights for 2007 are available from the National Statistics website in an article entitled Consumer Prices Index and Retail Prices Index: Updating Weights for 2007  
<http://www.statistics.gov.uk/cci/article.asp?id=1779>
- 9 Rates of change for the CPI are calculated from unrounded index levels, rather than on the published indices, which are rounded to one decimal place. The use of unrounded indices increases the accuracy of the calculation. The unrounded index levels are available on request. By contrast, rates of change for the RPI are calculated from the published rounded indices.

### Reliability

- 10 Once the RPI indices are published they are never revised. CPI indices are revisable although past revisions have been minimal with the exception of those arising from re-referencing of the CPI to 2005=100, which took place with the publication of the January 2006 indices.

### Comparability

- 11 The CPI's coverage of goods and services was extended in stages in the areas of health, education, childcare and insurance, with effect from the January 2000, 2001, and 2002 indices. In 2000, there was also a change to the population basis for the weights which was broadened from private households to include expenditure by foreign visitors and residents of institutional households. Further details can be found in a series of articles:  
[http://www.statistics.gov.uk/about/methodology\\_by\\_theme/cpi](http://www.statistics.gov.uk/about/methodology_by_theme/cpi)
- 12 The official CPI series starts in 1996 but estimates for earlier periods are available back to 1988. These estimates are broadly consistent with data from 1996 but should be treated with some caution. The following article provides more detail:  
<http://www.statistics.gov.uk/cci/article.asp?ID=31&Pos=4&ColRank=1&Rank=1>
- 13 RPI data are available back to 1947 but have been re-referenced on several occasions since then, generally accompanied by changes to the coverage and/or structure of the detailed sub-components. Details of these changes are given in Appendices 1 and 2 of the CPI Technical Manual:  
<http://www.statistics.gov.uk/statbase/Product.asp?vlnk=2328&More=N>

## Coherence

14 The CPI and RPI both measure the average change from month to month in the prices of consumer goods and services purchased in the UK. However, they differ in both coverage and methodology. A detailed description of these differences is given in an article entitled "The New Inflation Target: the Statistical Perspective":

[www.statistics.gov.uk/StatBase/Product.asp?vlnk=10913](http://www.statistics.gov.uk/StatBase/Product.asp?vlnk=10913). The differences are summarised below:

- In the CPI, the geometric mean is used to combine the individual prices into elementary indices at the most basic level whereas the RPI uses arithmetic means
- The CPI excludes a number of RPI series mainly relating to housing costs (for example, council tax), and in particular to owner occupiers' housing costs (including mortgage interest payments, house depreciation and buildings insurance). In addition, the CPI excludes the annual road fund licence and, from 2006, TV licences which are classified as taxes in the UK National Accounts, and Trades Union subscriptions which by convention are not part of household expenditure
- The CPI includes series for university accommodation fees, foreign students' university tuition fees, and unit trust and stockbrokers' charges, none of which are included in the RPI
- The CPI is categorised according to the international classification system, COICOP (Classification Of Individual CONsumption by Purpose). The way in which this maps to the RPI groupings is shown in the following table:

COICOP Divisions	RPI Groups
01 Food & non-alcoholic beverages	Food
02 Alcohol & tobacco	Alcoholic drink (off sales) Tobacco
03 Clothing & footwear	Clothing & footwear
04 Housing & household services	Housing (exc. Mortgage interest payments, depreciation, council tax & building insurance) Fuel & light
05 Furniture & household goods	Household goods Domestic services
06 Health	Personal goods & services (health-related items)
07 Transport	Motoring expenditure Fares & other travel costs
08 Communication	Household services (exc. domestic services & fees and subscriptions)
09 Recreation & culture	Leisure goods Leisure services

10 Education	Fees & subscriptions (education-related items)
11 Restaurants & hotels	Catering Alcoholic drink (on sales)
12 Miscellaneous goods & services	Personal goods & services (non health-related items) Fees & subscriptions (non education-related items)

- The index for the purchase of new cars in the CPI is quality adjusted and based on actual published prices for new cars. New car prices in the RPI are imputed from movements in second hand car prices
- The CPI weights are based on expenditure by all private households, foreign visitors to the UK and residents of institutional households. In the RPI, weights are based on expenditure by private households only, excluding the highest income households and pensioner households mainly dependent on state benefits
- In the construction of the CPI weights, amounts paid out in insurance claims are distributed among the COICOP headings according to the nature of the claims' expenditure, with the residual (the service charge) being allocated to the relevant insurance heading. For the RPI weights, total expenditure (that is, gross of claims paid out) is assigned to the relevant insurance heading

15 A breakdown of the difference between the CPI and RPI annual rates of inflation is shown in Table 10 of the CPI First Release.

### Accessibility

16 This release includes the January 2008 data, collected on 15 January. Future publication dates are 18 March, 15 April, 13 May, 17 June, 15 July and 12 August. The European Commission (Eurostat) will release figures for the harmonised index of consumer prices (HICP) for the month of January 2008 for EU member states excluding the UK, together with an EU average, on 29 February 2008. Further information on HICP for the European Union, Eurozone and other EU Member States is available from Eurostat's HICP web page: [http://epp.eurostat.ec.europa.eu/pls/portal/url/page/PGP\\_DS\\_HICP](http://epp.eurostat.ec.europa.eu/pls/portal/url/page/PGP_DS_HICP)

### Further information

17 A more detailed quality report for this First Release is available at: <http://www.statistics.gov.uk/CCI/article.asp?ID=1585>

18 A full description of how the CPI and RPI are compiled is given in the Consumer Price Indices Technical Manual 2007 edition: <http://www.statistics.gov.uk/statbase/Product.asp?vlnk=2328>

### General

19 Details of the policy governing the release of new data are available from the press office. Also available is a list of the names of those given pre-publication access to contents of this release.

- 20 In line with Consumer Price Indices Pre-Release arrangements, an advance estimate of the CPI was provided to the Governor of the Bank of England 3½ working days ahead of publication. The Governor shared this information with the MPC and officials present at the MPC policy meeting, on Thursday 7 February.
- 21 Complete runs of series in this release are available to download free of charge at: <http://www.statistics.gov.uk/timeseries> . Alternatively, for low-cost tailored data call Online Services on 020 7533 5675 or email: [tailored@statistics.gov.uk](mailto:tailored@statistics.gov.uk)
- 22 **National Statistics** are produced to high professional standards set out in the National Statistics Code of Practice. They undergo regular quality assurance reviews to ensure that they meet customer needs. They are produced free from any political interference. © Crown Copyright 2008

# 1 CPI, RPI and other selected indices: the latest three years

	Consumer prices index (CPI) <sup>1</sup>		Consumer prices index excluding indirect taxes (CPIY) <sup>3</sup>		Consumer prices index at constant tax rates (CPI-CT)		All items retail prices index (RPI)		All items RPI excluding mortgage interest payments and indirect taxes (RPIY) <sup>2</sup>			
	Percentage change over 12 months		Percentage change over 12 months		Percentage change over 12 months		Percentage change over 12 months		mortgage interest payments (RPIX)		mortgage interest payments and indirect taxes (RPIY) <sup>2</sup>	
	Index (2005=100)	Index (2005=100)	Index (2005=100)	Index (2005=100)	Index (2005=100)	Index (2005=100)	Index (Jan 13, 1987=100)	Index (Jan 13, 1987=100)	Index (Jan 13, 1987=100)	Index (Jan 13, 1987=100)	Index (Jan 13, 1987=100)	Index (Jan 13, 1987=100)
	D7BT	D7G7	EL2Q	EL2S	EAC7	EAD6	CHAW	CZBH	CHMK	CDKQ	CBZW	CBZX
2005 Jan	98.6	1.6	98.5	1.7	98.6	1.5	188.9	3.2	185.2	2.1	176.7	2.0
Feb	98.8	1.7	98.8	1.7	98.9	1.6	189.6	3.2	185.9	2.1	177.4	2.0
Mar	99.3	1.9	99.3	2.0	99.3	1.8	190.5	3.2	186.8	2.4	178.3	2.3
Apr	99.7	1.9	99.6	2.0	99.6	1.9	191.6	3.2	187.8	2.3	179.0	2.3
May	100.0	1.9	100.0	2.0	100.0	1.8	192.0	2.9	188.2	2.1	179.4	2.2
Jun	100.0	2.0	100.0	2.2	100.0	1.9	192.2	2.9	188.3	2.2	179.5	2.2
Jul	100.1	2.3	100.1	2.5	100.1	2.3	192.2	2.9	188.3	2.4	179.5	2.5
Aug	100.4	2.4	100.5	2.6	100.4	2.3	192.6	2.8	188.6	2.3	179.8	2.3
Sep	100.6	2.5	100.6	2.6	100.6	2.4	193.1	2.7	189.3	2.5	180.5	2.5
Oct	100.7	2.3	100.8	2.5	100.7	2.3	193.3	2.5	189.5	2.4	180.7	2.3
Nov	100.7	2.1	100.8	2.3	100.7	2.1	193.6	2.4	189.7	2.3	180.9	2.3
Dec	101.0	1.9	101.1	2.1	101.0	1.8	194.1	2.2	190.2	2.0	181.5	2.0
2006 Jan	100.5	1.9	100.6	2.1	100.5	1.9	193.4	2.4	189.4	2.3	180.7	2.3
Feb	100.9	2.0	100.9	2.1	100.8	2.0	194.2	2.4	190.1	2.3	181.4	2.3
Mar	101.1	1.8	101.1	1.9	101.1	1.7	195.0	2.4	190.8	2.1	182.2	2.2
Apr	101.7	2.0	101.7	2.1	101.6	2.0	196.5	2.6	192.3	2.4	183.2	2.3
May	102.2	2.2	102.3	2.3	102.1	2.2	197.7	3.0	193.6	2.9	184.5	2.8
Jun	102.5	2.5	102.6	2.6	102.4	2.4	198.5	3.3	194.2	3.1	185.2	3.2
Jul	102.5	2.4	102.6	2.4	102.4	2.3	198.5	3.3	194.2	3.1	185.2	3.2
Aug	102.9	2.5	103.0	2.6	102.8	2.4	199.2	3.4	194.9	3.3	186.0	3.4
Sep	103.0	2.4	103.2	2.6	102.9	2.3	200.1	3.6	195.3	3.2	186.4	3.3
Oct	103.2	2.4	103.5	2.7	103.1	2.3	200.4	3.7	195.5	3.2	186.7	3.3
Nov	103.4	2.7	103.8	3.0	103.4	2.6	201.1	3.9	196.2	3.4	187.5	3.6
Dec	104.0	3.0	104.3	3.2	103.9	2.9	202.7	4.4	197.4	3.8	188.6	3.9
2007 Jan	103.2	2.7	103.5	2.9	103.1	2.6	201.6	4.2	196.1	3.5	187.3	3.7
Feb	103.7	2.8	103.9	2.9	103.5	2.6	203.1	4.6	197.1	3.7	188.4	3.9
Mar	104.2	3.1	104.3	3.1	103.9	2.9	204.4	4.8	198.3	3.9	189.5	4.0
Apr	104.5	2.8	104.6	2.9	104.2	2.6	205.4	4.5	199.3	3.6	190.0	3.7
May	104.8	2.5	105.0	2.6	104.5	2.3	206.2	4.3	200.0	3.3	190.7	3.4
Jun	105.0	2.4	105.2	2.5	104.7	2.2	207.3	4.4	200.7	3.3	191.4	3.3
Jul	104.4	1.9	104.6	2.0	104.1	1.7	206.1	3.8	199.4	2.7	190.1	2.6
Aug	104.7	1.8	105.0	1.9	104.5	1.6	207.3	4.1	200.1	2.7	190.9	2.6
Sep	104.8	1.8	105.0	1.7	104.5	1.6	208.0	3.9	200.8	2.8	191.6	2.8
Oct	105.3	2.1	105.5	1.9	104.9	1.8	208.9	4.2	201.6	3.1	192.3	3.0
Nov	105.6	2.1	105.8	1.9	105.2	1.8	209.7	4.3	202.4	3.2	193.2	3.0
Dec	106.2	2.1	106.4	2.0	105.8	1.9	210.9	4.0	203.5	3.1	194.4	3.1
2008 Jan	105.5	2.2	105.7	2.1	105.1	2.0	209.8	4.1	202.7	3.4	193.5	3.3

1 Inflation rates prior to 1997 and index levels prior to 1996 are estimated. Further details are given in *Economic Trends No. 541 December 1998*. These details are also available on the National Statistics website: [www.statistics.gov.uk/cci/article.asp?ID=31](http://www.statistics.gov.uk/cci/article.asp?ID=31)

2 The taxes excluded are council tax, VAT, duties, vehicle excise duty, insurance tax and air passenger duty.

3 The taxes excluded are VAT, duties, insurance premium tax, air passenger duty, stamp duty on share transactions.

Source: National Statistics

## 2 CPI: Detailed figures for 15 January 2008

	Percentage change over				Percentage change over		
	Index (2005=100)	1 mth	12 mths		Index (2005=100)	1 mth	12 mths
<b>CPI (overall index)</b>	105.5	-0.7	2.2				
01 Food and non-alcoholic beverages	110.8	-0.3	6.1	<b>06.2 Out-patient services</b>	110.2	0.5	3.1
02 Alcoholic beverages and tobacco	106.9	1.1	2.2	06.2.1/3 Medical services & paramedical services	107.7	0.5	2.8
03 Clothing and footwear	87.5	-5.1	-4.9	06.2.2 Dental services	113.1	0.5	3.6
04 Housing, water, electricity, gas and other fuels	115.4	0.6	0.4	<b>06.3 Hospital services</b>	116.3	1.0	5.7
05 Furniture, household equipment and maintenance	100.0	-4.1	1.7	<b>07.1 Purchase of vehicles</b>	98.6	-	-1.1
06 Health	108.1	0.5	3.1	07.1.1A New cars	102.7	-0.1	1.2
07 Transport	108.6	-0.1	6.4	07.1.1B Second-hand cars	92.2	0.3	-4.3
08 Communication	95.8	-0.4	-3.2	07.1.2/3 Motorcycles and bicycles	97.7	-0.2	-0.9
09 Recreation and culture	97.0	-1.0	-1.4	<b>07.2 Operation of personal transport equipment</b>	116.6	1.3	11.7
10 Education	133.2	-	13.2	07.2.1 Spare parts and accessories	105.1	1.4	1.8
11 Restaurants and hotels	108.3	-	3.3	07.2.2 Fuels and lubricants	119.8	1.3	19.3
12 Miscellaneous goods and services	106.8	-0.1	1.5	07.2.3 Maintenance and repairs	114.9	1.5	4.9
<b>All goods</b>	102.8	-1.2	1.3	07.2.4 Other services	111.6	0.5	3.9
<b>All services</b>	108.8	-0.1	3.3	<b>07.3 Transport services</b>	107.0	-3.3	5.9
<b>01.1 Food</b>	111.2	-0.3	6.6	07.3.1 Passenger transport by railway	113.5	3.6	5.2
01.1.1 Bread and cereals	111.2	-0.5	7.8	07.3.2 Passenger transport by road	110.3	1.4	4.2
01.1.2 Meat	105.4	-0.4	1.9	07.3.3 Passenger transport by air	85.7	-19.4	5.1
01.1.3 Fish	119.8	1.5	5.3	07.3.4 Passenger transport by sea and inland waterway	113.2	-	15.1
01.1.4 Milk, cheese and eggs	118.6	-0.3	15.4	<b>08.1 Postal services</b>	121.5	-	6.3
01.1.5 Oils and fats	125.3	0.5	15.6	<b>08.2/3 Telephone and telefax equipment and services</b>	94.7	-0.4	-3.7
01.1.6 Fruit	104.2	-3.2	3.8	<b>09.1 Audio-visual equipment and related products</b>	72.8	-3.8	-15.5
01.1.7 Vegetables including potatoes and tubers	114.1	0.4	6.4	09.1.1 Reception and reproduction of sound and pictures	69.0	-4.4	-17.0
01.1.8 Sugar, jam, syrups, chocolate and confectionery	111.6	0.7	6.3	09.1.2 Photographic, cinematographic and optical equipment	49.0	0.1	-26.0
01.1.9 Food products (nec)	102.0	0.3	2.7	09.1.3 Data processing equipment	60.6	-3.3	-26.2
<b>01.2 Non-alcoholic beverages</b>	107.8	-0.4	2.7	09.1.4 Recording media	92.2	-5.6	-6.0
01.2.1 Coffee, tea and cocoa	106.6	-1.2	0.1	09.1.5 Repair of audio-visual equipment & related products	109.7	0.5	3.2
01.2.2 Mineral waters, soft drinks and juices	108.0	-0.2	3.5	<b>09.2 Oth. major durables for recreation &amp; culture</b>	101.9	0.1	1.4
<b>02.1 Alcoholic beverages</b>	100.8	1.6	0.6	09.2.1/2 Major durables for in/outdoor recreation	101.9	0.1	1.4
02.1.1 Spirits	101.3	3.5	2.6	<b>09.3 Other recreational items, gardens and pets</b>	97.5	-0.7	0.1
02.1.2 Wine	102.1	1.4	0.6	09.3.1 Games, toys and hobbies	93.4	-0.7	-1.6
02.1.3 Beer	96.9	-0.1	-2.1	09.3.2 Equipment for sport and open-air recreation	94.6	-3.7	-3.4
<b>02.2 Tobacco</b>	111.3	0.7	3.4	09.3.3 Gardens, plants and flowers	102.3	0.6	2.1
<b>03.1 Clothing</b>	87.2	-5.2	-5.0	09.3.4/5 Pets, related products and services	109.4	0.2	5.6
03.1.2 Garments	86.3	-5.5	-5.3	<b>09.4 Recreational and cultural services</b>	110.0	-0.7	4.0
03.1.3 Other clothing and clothing accessories	97.0	-3.3	-2.8	09.4.1 Recreational and sporting services	113.0	-0.3	5.2
03.1.4 Cleaning, repair and hire of clothing	109.7	1.1	3.1	09.4.2 Cultural services	108.7	-0.9	3.4
<b>03.2 Footwear including repairs</b>	89.6	-4.3	-3.8	<b>09.5 Books, newspapers and stationery</b>	107.2	0.4	4.8
<b>04.1 Actual rentals for housing</b>	108.1	0.5	3.3	09.5.1 Books	106.2	-0.1	10.1
<b>04.3 Regular maintenance and repair of the dwelling</b>	109.4	1.2	4.8	09.5.2 Newspapers and periodicals	113.6	0.7	4.6
04.3.1 Materials for maintenance and repair	107.3	1.2	5.2	09.5.3/4 Misc. printed matter, stationery, drawing materials	99.2	0.4	-0.3
04.3.2 Services for maintenance and repair	112.4	1.2	4.3	<b>09.6 Package holidays</b>	101.0	-0.1	0.9
<b>04.4 Water supply and misc. services for the dwelling</b>	115.3	-	6.5	<b>10.0 Education</b>	133.2	-	13.2
04.4.1 Water supply	115.7	-	6.2	<b>11.1 Catering services</b>	108.2	-	3.3
04.4.3 Sewerage collection	114.9	-	6.9	11.1.1 Restaurants & cafes	108.1	-	3.3
<b>04.5 Electricity, gas and other fuels</b>	130.9	0.7	-6.6	11.1.2 Canteens	109.6	0.4	3.7
04.5.1 Electricity	129.0	0.4	-4.6	<b>11.2 Accommodation services</b>	109.0	-	3.0
04.5.2 Gas	133.9	0.5	-12.7	<b>12.1 Personal care</b>	104.9	-0.4	2.5
04.5.3 Liquid fuels	143.4	3.8	47.5	12.1.1 Hairdressing and personal grooming establishments	109.2	0.1	3.4
04.5.4 Solid fuels	123.8	1.1	8.7	12.1.2/3 Appliances and products for personal care	103.4	-0.6	2.2
<b>05.1 Furniture, furnishings and carpets</b>	99.7	-7.7	2.0	<b>12.3 Personal effects (nec)</b>	105.9	-0.8	2.3
05.1.1 Furniture and furnishings	99.3	-8.7	1.6	12.3.1 Jewellery, clocks and watches	109.1	-0.5	3.1
05.1.2 Carpets and other floor coverings	100.6	-4.0	3.2	12.3.2 Other personal effects	100.0	-1.6	0.4
<b>05.2 Household textiles</b>	90.0	-3.6	-1.6	<b>12.4 Social protection</b>	114.5	0.7	4.9
<b>05.3 Household appliances, fitting and repairs</b>	96.7	-2.5	3.5	<b>12.5 Insurance</b>	108.6	1.0	3.9
05.3.1/2 Major appliances and small electric goods	95.5	-3.1	3.4	12.5.2 House contents insurance	106.8	1.8	3.5
05.3.3 Repair of household appliances	106.8	2.6	4.3	12.5.3 Health insurance	118.9	1.2	6.2
<b>05.4 Glassware, tableware and household utensils</b>	99.3	-2.0	2.1	12.5.4 Transport insurance	105.3	0.5	3.0
<b>05.5 Tools and equipment for house and garden</b>	102.6	0.9	0.6	<b>12.6 Financial services (nec)</b>	101.7	-0.7	-3.2
<b>05.6 Goods and services for routine maintenance</b>	108.9	0.4	2.2	12.6.2 Other financial services (nec)	101.7	-0.7	-3.2
05.6.1 Non-durable household goods	105.0	-0.3	0.4	<b>12.7 Other services (nec)</b>	114.3	1.4	4.7
05.6.2 Domestic services and household services	112.4	1.1	3.8				
<b>06.1 Medical products, appliances and equipment</b>	101.1	-	0.9				
06.1.1 Pharmaceutical products	101.7	-0.1	0.3				
06.1.2/3 Other medical and therapeutic equipment	100.8	0.1	1.5				

Key: - zero or negligible .. not available (nec) not elsewhere covered

Source: National Statistics

### 3 CPI: Detailed figures by divisions, groups and classes

	Weights	Index (2005=100)						Percentage change over 12 months					
		2008	2007 Aug	2007 Sep	2007 Oct	2007 Nov	2007 Dec	2008 Jan	2007 Aug	2007 Sep	2007 Oct	2007 Nov	2007 Dec
<b>CPI (overall index)</b>	1 000	104.7	104.8	105.3	105.6	106.2	105.5	1.8	1.8	2.1	2.1	2.1	2.2
01 Food and non-alcoholic beverages	109	106.1	107.4	109.1	110.1	111.1	110.8	3.0	3.7	4.7	4.8	5.4	6.1
02 Alcoholic beverages and tobacco	42	107.0	107.1	106.8	106.4	105.7	106.9	3.1	3.2	2.7	2.9	2.7	2.2
03 Clothing and footwear	63	91.1	92.5	92.5	92.9	92.2	87.5	-3.5	-4.0	-4.3	-4.4	-3.9	-4.9
04 Housing, water, electricity, gas and other fuels	115	114.0	114.0	114.3	114.6	114.7	115.4	2.8	2.3	1.4	0.8	0.2	0.4
05 Furniture, household equipment and maintenance	67	100.3	102.1	100.8	101.6	104.2	100.0	1.2	1.5	1.8	1.7	0.9	1.7
06 Health	22	106.8	107.1	107.5	107.3	107.6	108.1	3.3	3.4	3.2	3.1	3.3	3.1
07 Transport	152	108.6	105.7	106.6	107.0	108.7	108.6	2.6	2.7	5.1	5.8	5.8	6.4
08 Communication	23	97.2	96.6	96.2	96.3	96.2	95.8	-2.0	-3.0	-4.2	-4.0	-3.8	-3.2
09 Recreation and culture	152	97.5	97.6	97.7	97.6	98.0	97.0	-0.9	-1.0	-0.9	-1.1	-1.3	-1.4
10 Education	19	117.8	122.9	133.2	133.2	133.2	133.2	14.0	13.9	13.2	13.2	13.2	13.2
11 Restaurants and hotels	137	107.4	107.6	107.9	108.0	108.3	108.3	3.6	3.7	3.5	3.4	3.4	3.3
12 Miscellaneous goods and services	99	105.6	105.8	106.4	106.6	106.8	106.8	1.1	1.0	1.3	1.6	1.9	1.5
<b>All goods</b>	547	101.9	102.5	102.8	103.5	104.1	102.8	0.1	0.4	1.0	1.1	1.1	1.3
<b>All services</b>	453	108.3	107.7	108.4	108.2	108.9	108.8	3.8	3.4	3.4	3.2	3.3	3.3
<b>01.1 Food</b>	95	105.7	107.2	109.2	110.4	111.5	111.2	2.8	3.8	5.1	5.1	5.9	6.6
01.1.1 Bread and cereals	16	104.7	106.1	107.2	109.6	111.8	111.2	2.7	3.6	4.6	6.1	7.5	7.8
01.1.2 Meat	21	102.9	102.0	104.8	105.0	105.9	105.4	-0.3	-0.7	1.3	1.3	1.5	1.9
01.1.3 Fish	5	116.7	117.2	119.6	119.7	118.0	119.8	5.2	5.2	5.2	6.0	2.7	5.3
01.1.4 Milk, cheese and eggs	14	106.2	112.9	114.4	117.4	118.9	118.6	3.3	10.0	11.3	13.9	15.0	15.4
01.1.5 Oils and fats	2	105.1	118.1	119.7	123.9	124.7	125.3	-3.0	10.4	11.2	14.3	15.1	15.6
01.1.6 Fruit	9	98.6	102.3	108.5	109.3	107.6	104.2	-1.2	-0.3	4.0	1.3	0.4	3.8
01.1.7 Vegetables including potatoes and tubers	15	111.3	110.4	111.0	111.6	113.7	114.1	10.4	7.8	7.6	4.2	6.8	6.4
01.1.8 Sugar, jam, syrups, chocolate and confectionery	11	107.7	107.9	108.1	109.2	110.8	111.6	2.6	3.0	3.4	4.4	6.0	6.3
01.1.9 Food products (nec)	2	100.0	101.1	101.1	101.5	101.7	102.0	0.8	1.9	0.6	1.8	1.7	2.7
<b>01.2 Non-alcoholic beverages</b>	14	109.0	108.9	108.7	108.2	108.2	107.8	4.5	2.9	2.3	2.4	1.9	2.7
01.2.1 Coffee, tea and cocoa	3	108.9	110.0	108.5	109.4	107.8	106.6	0.5	0.1	-1.4	0.9	-2.1	0.1
01.2.2 Mineral waters, soft drinks and juices	11	108.9	108.4	108.6	107.7	108.2	108.0	5.7	3.7	3.4	2.8	3.1	3.5
<b>02.1 Alcoholic beverages</b>	18	102.1	102.1	101.3	100.5	99.2	100.8	0.9	1.1	-0.1	0.4	0.2	0.6
02.1.1 Spirits	5	102.1	103.2	101.3	99.5	97.9	101.3	2.2	2.9	0.2	1.2	1.1	2.6
02.1.2 Wine	9	102.1	102.1	102.5	101.8	100.8	102.1	-0.4	0.2	0.7	0.5	0.9	0.6
02.1.3 Beer	4	101.5	100.4	98.1	98.3	97.0	96.9	2.2	1.0	-2.2	-0.8	-2.5	-2.1
<b>02.2 Tobacco</b>	24	110.7	110.8	110.8	110.7	110.6	111.3	4.7	4.7	4.7	4.6	4.4	3.4
<b>03.1 Clothing</b>	55	90.6	92.2	92.1	92.7	92.0	87.2	-3.9	-4.3	-4.7	-4.8	-4.3	-5.0
03.1.2 Garments	51	89.9	91.5	91.4	92.0	91.3	86.3	-4.2	-4.6	-5.0	-5.1	-4.6	-5.3
03.1.3 Other clothing and clothing accessories	3	97.9	99.2	99.3	100.2	100.3	97.0	-1.3	-1.8	-2.1	-2.2	-2.0	-2.8
03.1.4 Cleaning, repair and hire of clothing	1	108.8	109.0	109.1	109.5	108.5	109.7	3.6	3.4	3.2	3.4	2.3	3.1
<b>03.2 Footwear including repairs</b>	8	94.2	94.5	94.8	94.6	93.6	89.6	-0.6	-2.1	-1.8	-2.1	-1.1	-3.8
<b>04.1 Actual rentals for housing</b>	51	107.0	107.0	107.5	107.6	107.6	108.1	2.9	3.0	3.3	3.3	3.1	3.3
<b>04.3 Regular maintenance and repair of the dwelling</b>	18	106.6	106.9	107.2	107.5	108.1	109.4	4.5	4.3	4.7	4.6	4.4	4.8
04.3.1 Materials for maintenance and repair	10	104.6	104.9	105.0	105.2	106.0	107.3	4.4	4.3	4.7	4.6	4.3	5.2
04.3.2 Services for maintenance and repair	8	109.6	109.8	110.5	110.8	111.1	112.4	4.5	4.4	4.6	4.7	4.7	4.3
<b>04.4 Water supply and misc. services for the dwelling</b>	11	115.3	115.3	115.3	115.3	115.3	115.3	6.5	6.5	6.5	6.5	6.5	6.5
04.4.1 Water supply	5	115.7	115.7	115.7	115.7	115.7	115.7	6.2	6.2	6.2	6.2	6.2	6.2
04.4.3 Sewerage collection	6	114.9	114.9	114.9	114.9	114.9	114.9	6.9	6.9	6.9	6.9	6.9	6.9
<b>04.5 Electricity, gas and other fuels</b>	35	129.4	129.2	129.2	129.9	130.0	130.9	0.5	-1.0	-4.0	-5.6	-7.0	-6.6
04.5.1 Electricity	17	128.8	128.6	128.5	128.5	128.5	129.0	2.5	1.2	-1.5	-3.3	-4.5	-4.6
04.5.2 Gas	15	134.6	133.6	133.1	133.2	133.2	133.9	-0.7	-3.7	-8.5	-11.3	-12.9	-12.7
04.5.3 Liquid fuels	2	110.0	116.7	121.0	137.3	138.1	143.4	-8.5	2.5	15.8	37.6	32.1	47.5
04.5.4 Solid fuels	1	113.1	114.4	117.7	119.9	122.4	123.8	7.0	7.0	4.7	5.5	7.6	8.7
<b>05.1 Furniture, furnishings and carpets</b>	28	100.3	103.7	101.4	102.5	108.0	99.7	1.0	2.1	2.1	1.8	-0.2	2.0
05.1.1 Furniture and furnishings	22	100.0	104.1	101.3	103.4	108.9	99.3	1.1	2.1	2.5	2.4	-0.8	1.6
05.1.2 Carpets and other floor coverings	6	101.4	102.2	101.7	99.1	104.7	100.6	0.1	2.0	0.7	-0.8	1.8	3.2
<b>05.2 Household textiles</b>	8	92.7	93.7	91.6	92.7	93.4	90.0	-2.2	-1.5	-2.4	-3.1	-2.5	-1.6
<b>05.3 Household appliances, fitting and repairs</b>	9	95.4	97.4	96.8	98.7	99.1	96.7	-1.4	-2.2	1.8	3.8	4.3	3.5
05.3.1/2 Major appliances and small electric goods	8	94.4	96.7	96.0	98.0	98.5	95.5	-1.9	-2.7	1.8	4.0	4.6	3.4
05.3.3 Repair of household appliances	1	103.2	103.6	103.7	104.0	104.1	106.8	2.2	2.3	2.3	2.3	2.3	4.3
<b>05.4 Glassware, tableware and household utensils</b>	7	99.3	99.9	100.5	100.5	101.3	99.3	1.7	1.1	1.7	0.7	1.4	2.1
<b>05.5 Tools and equipment for house and garden</b>	5	102.2	101.9	101.7	101.0	101.7	102.6	1.5	0.4	-0.2	-0.7	-0.2	0.6
<b>05.6 Goods and services for routine maintenance</b>	10	108.0	108.1	108.0	108.4	108.5	108.9	3.4	3.5	2.6	2.9	2.8	2.2
05.6.1 Non-durable household goods	5	105.3	105.2	104.6	105.1	105.3	105.0	1.5	1.6	0.6	0.6	0.7	0.4
05.6.2 Domestic services and household services	5	110.3	110.6	110.9	111.1	111.2	112.4	5.0	5.1	4.4	4.9	4.5	3.8
<b>06.1 Medical products, appliances and equipment</b>	10	100.5	100.8	101.0	100.6	101.1	101.1	1.0	1.0	1.0	0.9	1.2	0.9
06.1.1 Pharmaceutical products	5	101.1	101.6	102.0	101.1	101.8	101.7	0.6	0.5	0.9	0.4	0.5	0.3
06.1.2/3 Other medical and therapeutic equipment	5	100.2	100.3	100.4	100.3	100.7	100.8	1.5	1.5	1.2	1.4	2.0	1.5

Key: - zero or negligible .. not available (nec) not elsewhere covered

Source: National Statistics

# 3 CPI: Detailed figures by divisions, groups and classes

continued

	Weights	Index (2005=100)						Percentage change over 12 months					
		2008	2007 Aug	2007 Sep	2007 Oct	2007 Nov	2007 Dec	2008 Jan	2007 Aug	2007 Sep	2007 Oct	2007 Nov	2007 Dec
<b>06.2 Out-patient services</b>	4	109.0	109.4	109.6	109.5	109.7	110.2	3.5	3.8	3.7	3.3	3.4	3.1
06.2.1/3 Medical services & paramedical services	2	106.3	106.6	107.0	106.7	107.1	107.7	2.6	2.7	2.7	2.2	2.8	2.8
06.2.2 Dental services	2	112.2	112.6	112.5	112.8	112.6	113.1	4.8	5.2	5.0	4.8	4.3	3.6
<b>06.3 Hospital services</b>	8	114.0	114.2	115.0	115.0	115.1	116.3	5.7	5.9	5.5	5.4	5.5	5.7
<b>07.1 Purchase of vehicles</b>	48	99.1	98.9	98.9	99.0	98.6	98.6	-0.3	-0.5	-0.5	-0.4	-0.8	-1.1
07.1.1A New cars	26	102.6	102.6	102.8	102.9	102.8	102.7	1.5	1.5	1.6	1.4	1.4	1.2
07.1.1B Second-hand cars	19	93.3	92.9	92.6	92.9	92.0	92.2	-3.4	-3.6	-3.7	-3.0	-3.6	-4.3
07.1.2/3 Motorcycles and bicycles	3	100.0	98.6	98.5	98.1	97.9	97.7	1.0	-0.8	-0.8	-0.9	-1.9	-0.9
<b>07.2 Operation of personal transport equipment</b>	72	110.3	109.9	111.6	113.9	115.1	116.6	1.2	3.9	8.1	10.3	10.1	11.7
07.2.1 Spare parts and accessories	5	103.8	104.1	103.7	103.8	103.7	105.1	0.7	0.8	0.5	0.4	0.4	1.8
07.2.2 Fuels and lubricants	38	109.6	108.8	111.8	116.1	118.3	119.8	-2.3	3.3	12.1	17.0	16.5	19.3
07.2.3 Maintenance and repairs	23	112.3	112.3	112.7	112.9	113.2	114.9	5.4	5.0	4.6	3.9	3.9	4.9
07.2.4 Other services	6	110.0	110.1	110.7	111.0	111.0	111.6	5.2	5.2	5.7	5.7	5.4	3.9
<b>07.3 Transport services</b>	32	120.3	107.4	108.2	104.2	110.7	107.0	9.9	4.9	7.0	5.1	5.9	5.9
07.3.1 Passenger transport by railway	8	110.1	110.0	109.6	109.6	109.6	113.5	4.3	6.1	5.8	4.8	5.3	5.2
07.3.2 Passenger transport by road	14	108.3	108.4	108.2	108.4	108.8	110.3	6.4	5.8	5.0	4.7	4.8	4.2
07.3.3 Passenger transport by air	8	129.1	92.8	96.9	84.0	106.4	85.7	9.1	0.5	7.0	0.8	2.6	5.1
07.3.4 Passenger transport by sea and inland waterway	2	162.6	121.5	118.9	111.6	113.2	113.2	25.9	-2.0	10.3	13.3	9.3	15.1
<b>08.1 Postal services</b>	1	121.5	121.5	121.5	121.5	121.5	121.5	12.6	6.3	6.3	6.3	6.3	6.3
<b>08.2/3 Telephone and telefax equipment and services</b>	22	96.1	95.6	95.1	95.2	95.1	94.7	-2.6	-3.4	-4.6	-4.5	-4.2	-3.7
<b>09.1 Audio-visual equipment and related products</b>	27	77.7	76.8	75.8	75.4	75.7	72.8	-10.6	-12.3	-12.5	-13.5	-13.9	-15.5
09.1.1 Reception and reproduction of sound and pictures	6	74.5	73.5	72.6	72.5	72.2	69.0	-11.1	-13.3	-13.7	-14.2	-14.4	-17.0
09.1.2 Photographic, cinematographic and optical equipment	4	54.9	53.7	54.2	50.9	48.9	49.0	-24.7	-28.2	-27.4	-30.4	-31.8	-26.0
09.1.3 Data processing equipment	5	67.3	64.7	64.1	62.9	62.7	60.6	-22.8	-24.7	-21.7	-23.9	-24.6	-26.2
09.1.4 Recording media	11	95.6	96.1	93.9	95.3	97.7	92.2	1.8	1.5	-0.8	-1.0	-1.7	-6.0
09.1.5 Repair of audio-visual equipment & related products	1	108.3	108.5	108.8	108.8	109.1	109.7	3.4	3.7	3.8	3.8	4.0	3.2
<b>09.2 Other major durables for recreation &amp; culture</b>	9	100.7	100.8	101.1	101.7	101.7	101.9	-0.1	-0.1	0.1	0.9	0.9	1.4
09.2.1/2 Major durables for in/outdoor recreation	9	100.7	100.8	101.1	101.7	101.7	101.9	-0.1	-0.1	0.1	0.9	0.9	1.4
<b>09.3 Other recreational items, gardens and pets</b>	38	96.6	97.3	97.5	97.6	98.2	97.5	-1.3	0.3	0.2	0.6	0.7	0.1
09.3.1 Games, toys and hobbies	22	92.9	93.6	93.7	93.3	94.0	93.4	-2.8	-0.4	-0.8	-0.6	-0.5	-1.6
09.3.2 Equipment for sport and open-air recreation	4	98.4	98.6	98.5	99.1	98.3	94.6	-0.6	-0.1	0.0	0.9	0.3	-3.4
09.3.3 Gardens, plants and flowers	5	99.7	100.1	100.3	100.4	101.7	102.3	1.1	1.2	2.0	0.7	1.2	2.1
09.3.4/5 Pets, related products and services	7	105.1	106.4	106.7	108.5	109.2	109.4	1.7	2.1	2.2	3.9	4.4	5.6
<b>09.4 Recreational and cultural services</b>	32	109.4	110.0	110.7	110.7	110.8	110.0	4.8	3.9	3.8	4.0	3.6	4.0
09.4.1 Recreational and sporting services	11	109.2	112.6	113.3	113.3	113.3	113.0	4.2	5.0	5.7	5.6	5.6	5.2
09.4.2 Cultural services	21	109.5	108.8	109.5	109.6	109.7	108.7	5.0	3.3	3.0	3.2	2.7	3.4
<b>09.5 Books, newspapers and stationery</b>	17	106.1	106.8	107.0	106.4	106.8	107.2	2.5	2.1	2.8	1.7	1.3	4.8
09.5.1 Books	5	108.3	109.7	109.1	106.2	106.3	106.2	5.1	5.7	6.3	2.3	0.5	10.1
09.5.2 Newspapers and periodicals	7	110.0	110.6	111.5	111.9	112.8	113.6	3.2	2.0	3.1	3.0	3.7	4.6
09.5.3/4 Misc. printed matter, stationery, drawing materials	5	98.1	98.0	98.3	98.7	98.9	99.2	-1.9	-2.1	-1.8	-1.5	-1.7	-0.3
<b>09.6 Package holidays</b>	29	100.4	100.4	100.7	100.8	101.1	101.0	0.9	1.3	1.4	1.1	1.4	0.9
<b>10.0 Education</b>	19	117.8	122.9	133.2	133.2	133.2	133.2	14.0	13.9	13.2	13.2	13.2	13.2
<b>11.1 Catering services</b>	118	107.2	107.4	107.7	107.9	108.2	108.2	3.7	3.7	3.6	3.4	3.4	3.3
11.1.1 Restaurants & cafes	106	107.0	107.2	107.5	107.7	108.1	108.1	3.4	3.5	3.4	3.3	3.4	3.3
11.1.2 Canteens	12	108.3	108.8	109.0	109.2	109.1	109.6	5.5	5.7	5.4	4.1	4.0	3.7
<b>11.2 Accommodation services</b>	19	108.5	109.0	109.4	109.1	108.9	109.0	3.2	3.3	3.0	3.4	3.3	3.0
<b>12.1 Personal care</b>	30	104.1	103.9	105.4	105.5	105.4	104.9	1.5	1.2	2.5	2.8	3.1	2.5
12.1.1 Hairdressing and personal grooming establishments	8	107.7	108.1	108.4	108.9	109.1	109.2	3.5	3.8	3.7	3.9	3.7	3.4
12.1.2/3 Appliances and products for personal care	22	102.8	102.5	104.3	104.3	104.0	103.4	0.9	0.3	2.1	2.4	2.9	2.2
<b>12.3 Personal effects (nec)</b>	10	105.4	106.2	106.0	106.7	106.7	105.9	1.5	1.7	1.6	2.3	2.4	2.3
12.3.1 Jewellery, clocks and watches	7	108.1	108.8	108.9	109.6	109.6	109.1	1.9	2.0	2.0	2.6	3.0	3.1
12.3.2 Other personal effects	3	100.8	102.0	100.9	101.8	101.7	100.0	0.7	1.2	0.5	1.6	1.1	0.4
<b>12.4 Social protection</b>	12	112.1	112.6	113.0	113.5	113.7	114.5	5.7	5.4	5.4	5.4	5.3	4.9
<b>12.5 Insurance</b>	8	105.9	106.1	106.5	106.8	107.5	108.6	3.2	3.6	3.9	3.2	4.4	3.9
12.5.2 House contents insurance	2	102.8	103.0	102.1	103.7	104.9	106.8	0.2	0.5	-1.2	0.8	2.4	3.5
12.5.3 Health insurance	2	116.3	116.3	117.5	117.5	117.5	118.9	6.9	6.9	6.8	6.8	6.8	6.2
12.5.4 Transport insurance	4	103.3	103.5	104.2	104.1	104.7	105.3	2.9	3.5	5.0	2.7	4.2	3.0
<b>12.6 Financial services (nec)</b>	28	101.9	102.1	102.0	101.8	102.4	101.7	-3.0	-3.0	-3.5	-3.0	-2.5	-3.2
12.6.2 Other financial services (nec)	28	101.9	102.1	102.0	101.8	102.4	101.7	-3.0	-3.0	-3.5	-3.0	-2.5	-3.2
<b>12.7 Other services (nec)</b>	11	110.1	110.4	112.0	112.4	112.6	114.3	3.1	3.0	3.7	3.8	3.7	4.7

Key: - zero or negligible .. not available (nec) not elsewhere covered

Source: National Statistics

# 4 CPI: Detailed figures by division<sup>1</sup>

	Food and non-alcoholic beverages	Alcoholic beverages and tobacco	Clothing and footwear	Housing, water, electricity, gas & other fuels	Furniture, household equipment & routine maintenance	Health <sup>2</sup>	Transport	Communication	Recreation and culture	Education <sup>2</sup>	Restaurants and hotels	Miscellaneous goods and services <sup>2</sup>	CPI (overall index)
COICOP Division	01	02	03	04	05	06	07	08	09	10	11	12	
<b>Weights</b>													
2008	CHZR 109	CHZS 42	CHZT 63	CHZU 115	CHZV 67	CHZW 22	CHZX 152	CHZY 23	CHZZ 152	CJUU 19	CJUV 137	CJUW 99	CHZQ 1 000
<b>Monthly indices (2005=100)</b>													
	D7BU	D7BV	D7BW	D7BX	D7BY	D7BZ	D7C2	D7C3	D7C4	D7C5	D7C6	D7C7	D7BT
2006 Jan	100.4	101.0	96.0	103.3	97.8	101.0	101.2	100.9	98.6	103.3	101.5	102.0	100.5
Feb	101.0	100.8	95.9	103.6	98.5	101.1	101.4	101.0	99.4	103.3	101.9	102.1	100.9
Mar	100.4	101.1	96.5	104.5	100.3	101.0	101.4	100.9	98.9	103.3	102.2	102.4	101.1
Apr	100.2	102.3	96.5	107.3	98.5	102.2	102.9	100.9	99.1	103.3	102.5	103.3	101.7
May	101.7	102.5	97.2	108.8	99.3	102.6	103.5	99.7	98.9	103.3	103.0	103.4	102.2
Jun	102.4	103.6	96.7	109.7	100.2	102.5	103.5	100.0	98.7	103.3	103.1	103.9	102.5
Jul	102.6	103.4	92.2	110.5	98.1	103.0	105.5	99.8	98.4	103.3	103.5	104.0	102.5
Aug	103.0	103.8	94.4	110.9	99.1	103.4	105.8	99.2	98.4	103.3	103.6	104.5	102.9
Sep	103.6	103.7	96.4	111.5	100.6	103.6	102.9	99.6	98.6	107.9	103.8	104.7	103.0
Oct	104.2	103.9	96.6	112.7	99.0	104.2	101.5	100.4	98.6	117.8	104.2	105.0	103.2
Nov	105.1	103.4	97.2	113.7	100.0	104.1	101.1	100.3	98.7	117.8	104.5	105.0	103.4
Dec	105.4	103.0	96.0	114.5	103.3	104.2	102.8	99.9	99.2	117.8	104.7	104.9	104.0
2007 Jan	104.4	104.5	92.0	114.9	98.3	104.8	102.1	99.0	98.3	117.8	104.9	105.1	103.2
Feb	105.4	105.1	91.9	115.1	99.6	104.9	102.8	98.1	98.4	117.8	105.2	105.8	103.7
Mar	106.0	105.6	92.8	115.0	102.9	104.8	103.1	98.1	98.2	117.8	105.7	106.2	104.2
Apr	106.2	107.0	93.7	115.7	100.7	105.5	104.5	97.2	98.3	117.8	106.3	105.8	104.5
May	106.7	106.8	93.7	115.0	101.8	105.8	106.1	96.6	98.0	117.8	106.6	105.7	104.8
Jun	107.3	107.1	93.6	114.5	104.0	106.1	106.8	96.1	97.6	117.8	106.9	105.8	105.0
Jul	105.5	106.9	89.8	114.3	99.7	106.6	108.0	94.8	97.0	117.8	107.2	106.1	104.4
Aug	106.1	107.0	91.1	114.0	100.3	106.8	108.6	97.2	97.5	117.8	107.4	105.6	104.7
Sep	107.4	107.1	92.5	114.0	102.1	107.1	105.7	96.6	97.6	122.9	107.6	105.8	104.8
Oct	109.1	106.8	92.5	114.3	100.8	107.5	106.6	96.2	97.7	133.2	107.9	106.4	105.3
Nov	110.1	106.4	92.9	114.6	101.6	107.3	107.0	96.3	97.6	133.2	108.0	106.6	105.6
Dec	111.1	105.7	92.2	114.7	104.2	107.6	108.7	96.2	98.0	133.2	108.3	106.8	106.2
2008 Jan	110.8	106.9	87.5	115.4	100.0	108.1	108.6	95.8	97.0	133.2	108.3	106.8	105.5
<b>Percentage change on a year earlier</b>													
	D7G8	D7G9	D7GA	D7GB	D7GC	D7GD	D7GE	D7GF	D7GG	D7GH	D7GI	D7GJ	D7G7
2006 Jan	1.2	2.3	-4.7	6.3	-0.8	2.3	5.1	0.5	-2.1	4.7	3.4	3.5	1.9
Feb	1.1	1.6	-4.7	6.4	-0.5	2.3	4.2	0.4	-0.8	4.7	3.5	3.6	2.0
Mar	-0.4	2.5	-4.7	7.0	-0.4	2.1	3.5	0.5	-1.4	4.7	3.6	3.7	1.8
Apr	0.3	2.5	-4.4	7.7	-0.8	2.7	4.4	0.3	-1.6	4.7	3.0	4.0	2.0
May	1.1	2.2	-3.7	9.0	-0.8	2.9	4.0	-0.4	-1.6	4.7	3.2	4.1	2.2
Jun	1.8	3.3	-3.9	9.8	-0.1	2.7	3.9	-0.3	-1.6	4.7	3.2	4.4	2.5
Jul	3.2	2.8	-4.5	10.0	-1.3	2.4	3.3	0.3	-1.4	4.7	3.2	3.6	2.4
Aug	3.4	3.3	-3.9	10.5	-0.5	2.6	2.4	-0.7	-0.9	4.7	3.0	3.9	2.5
Sep	4.0	3.4	-3.5	10.7	0.3	2.8	0.6	-0.2	-1.0	7.1	2.9	3.9	2.4
Oct	4.7	3.2	-3.3	10.8	-0.4	3.1	-0.5	0.9	-1.1	14.0	3.0	3.8	2.4
Nov	5.0	2.7	-3.2	11.1	-0.5	3.1	0.8	0.7	-0.7	14.0	3.2	3.5	2.7
Dec	4.6	2.7	-4.1	11.4	0.6	3.9	2.1	0.5	-0.3	14.0	3.2	3.3	3.0
2007 Jan	3.9	3.5	-4.1	11.2	0.5	3.8	0.9	-1.8	-0.3	14.0	3.3	3.1	2.7
Feb	4.4	4.2	-4.2	11.1	1.2	3.7	1.4	-2.8	-1.0	14.0	3.3	3.6	2.8
Mar	5.6	4.4	-3.9	10.1	2.7	3.7	1.6	-2.8	-0.7	14.0	3.4	3.7	3.1
Apr	6.0	4.5	-2.8	7.9	2.2	3.2	1.5	-3.7	-0.8	14.0	3.8	2.4	2.8
May	5.0	4.2	-3.6	5.7	2.5	3.1	2.5	-3.2	-0.8	14.0	3.5	2.2	2.5
Jun	4.8	3.4	-3.2	4.3	3.8	3.4	3.2	-3.9	-1.1	14.0	3.7	1.8	2.4
Jul	2.8	3.4	-2.6	3.5	1.6	3.4	2.4	-5.0	-1.4	14.0	3.6	2.0	1.9
Aug	3.0	3.1	-3.5	2.8	1.2	3.3	2.6	-2.0	-0.9	14.0	3.6	1.1	1.8
Sep	3.7	3.2	-4.0	2.3	1.5	3.4	2.7	-3.0	-1.0	13.9	3.7	1.0	1.8
Oct	4.7	2.7	-4.3	1.4	1.8	3.2	5.1	-4.2	-0.9	13.2	3.5	1.3	2.1
Nov	4.8	2.9	-4.4	0.8	1.7	3.1	5.8	-4.0	-1.1	13.2	3.4	1.6	2.1
Dec	5.4	2.7	-3.9	0.2	0.9	3.3	5.8	-3.8	-1.3	13.2	3.4	1.9	2.1
2008 Jan	6.1	2.2	-4.9	0.4	1.7	3.1	6.4	-3.2	-1.4	13.2	3.3	1.5	2.2

Key: - zero or negligible

<sup>1</sup> Inflation rates prior to 1997 and index levels prior to 1996 are estimated. Further details are given in *Economic Trends No. 541 December 1998*. These details are also available on the National Statistics website: [www.statistics.gov.uk/cpi/article.asp?ID=31](http://www.statistics.gov.uk/cpi/article.asp?ID=31)

<sup>2</sup> The coverage of these categories was extended in January 2000; further extensions to coverage came into effect in January 2001 for health and miscellaneous goods and services; the coverage of miscellaneous goods and services was further extended with effect from January 2002 (details are given in a series of *Economic Trends* articles available on the National Statistics website: [www.statistics.gov.uk/cpi](http://www.statistics.gov.uk/cpi))

Source: National Statistics

# 5 CPI: Detailed goods and services breakdown<sup>1</sup>

	Weights	Index (2005=100)						Percentage change over 12 months						Percentage change over 1 month
		2008	2007	2007	2007	2007	2007	2007	2007	2007	2007	2007	2008	2008
			Aug	Sep	Oct	Nov	Dec	Jan	Aug	Sep	Oct	Nov	Dec	Jan
<b>CPI (overall index)</b>	1 000	104.7	104.8	105.3	105.6	106.2	105.5	1.8	1.8	2.1	2.1	2.1	2.2	-0.7
<b>All goods</b>	547	101.9	102.5	102.8	103.5	104.1	102.8	0.1	0.4	1.0	1.1	1.1	1.3	-1.2
<b>Food, alcoholic beverages &amp; tobacco</b>	151	106.4	107.3	108.4	109.0	109.5	109.6	3.0	3.6	4.1	4.2	4.6	5.0	0.1
Processed food & non-alcoholic beverages	59	106.5	108.8	109.5	111.1	112.4	112.2	3.0	4.9	5.4	6.7	7.6	8.0	-0.1
Non-processed food	50	105.7	105.8	108.6	109.0	109.5	109.0	3.0	2.3	4.0	2.6	3.0	3.9	-0.5
Seasonal food	29	107.9	108.8	111.6	112.2	112.4	111.9	5.7	4.7	6.1	3.6	4.1	5.5	-0.5
Meat	21	102.9	102.0	104.8	105.0	105.9	105.4	-0.3	-0.7	1.3	1.3	1.5	1.9	-0.4
Alcoholic beverages & tobacco	42	107.0	107.1	106.8	106.4	105.7	106.9	3.1	3.2	2.7	2.9	2.7	2.2	1.1
<b>Industrial goods</b>	396	100.3	100.8	100.9	101.5	102.1	100.4	-1.0	-0.7	-0.2	0.0	-0.2	-0.1	-1.7
Energy	73	119.5	119.0	120.7	123.5	124.8	126.0	-0.5	1.5	3.9	5.3	4.4	5.8	1.0
Electricity, gas & miscellaneous energy	33	131.0	130.6	130.4	130.5	130.6	131.2	1.3	-0.8	-4.6	-6.8	-8.1	-8.1	0.5
Liquid fuels, vehicle fuels & lubricants	40	109.6	109.0	112.1	116.7	118.9	120.5	-2.6	3.2	12.2	17.6	17.0	20.1	1.4
Non-energy industrial goods	323	96.8	97.4	97.2	97.5	98.0	95.7	-1.1	-1.2	-1.1	-1.2	-1.3	-1.4	-2.3
Clothing & footwear goods	62	90.8	92.2	92.2	92.7	92.0	87.2	-3.6	-4.2	-4.4	-4.5	-4.0	-5.0	-5.2
Housing goods	76	100.9	102.6	101.4	102.2	104.6	100.9	1.6	1.9	2.3	2.1	1.3	2.3	-3.5
Household goods	61	99.2	101.2	99.8	100.7	103.5	98.8	0.8	1.1	1.5	1.3	0.4	1.5	-4.6
Water supply; materials for maintenance & repair	15	108.1	108.3	108.3	108.5	109.0	109.9	5.0	4.9	5.2	5.2	4.9	5.5	0.8
Medical products, appliances & equipment	10	100.5	100.8	101.0	100.6	101.1	101.1	1.0	1.0	1.0	0.9	1.2	0.9	-
Vehicles, spare parts & accessories	53	99.6	99.4	99.4	99.5	99.1	99.3	-0.2	-0.4	-0.4	-0.3	-0.6	-0.8	0.2
Recreational goods	90	92.6	92.6	92.4	92.3	92.7	91.5	-3.5	-3.5	-3.4	-3.7	-3.9	-4.0	-1.4
Audio-visual goods	26	76.7	75.7	74.7	74.3	74.6	71.6	-11.1	-12.9	-13.1	-14.1	-14.6	-16.2	-4.0
Other recreational goods	64	99.7	100.3	100.5	100.5	101.0	100.7	-0.1	0.8	0.9	0.9	0.9	1.5	-0.3
Miscellaneous goods	32	103.7	103.7	104.9	105.2	105.0	104.3	1.1	0.8	2.0	2.4	2.7	2.3	-0.7
<b>All services</b>	453	108.3	107.7	108.4	108.2	108.9	108.8	3.8	3.4	3.4	3.2	3.3	3.3	-0.1
<b>Housing services</b>	73	108.0	108.0	108.4	108.6	108.7	109.3	3.5	3.5	3.7	3.7	3.6	3.7	0.6
Actual rentals for housing	51	107.0	107.0	107.5	107.6	107.6	108.1	2.9	3.0	3.3	3.3	3.1	3.3	0.5
Primary housing services	16	110.6	110.7	111.0	111.3	111.6	112.5	4.8	4.8	4.6	5.0	5.2	5.1	0.8
Other housing services	6	109.3	109.6	109.8	110.1	110.1	111.6	4.6	4.7	4.1	4.5	4.2	3.9	1.3
<b>Travel &amp; transport services</b>	65	115.5	109.2	109.7	107.9	111.3	110.1	7.6	4.9	5.9	4.6	5.0	5.1	-1.0
Services for personal transport equipment	29	111.9	111.9	112.3	112.5	112.8	114.2	5.4	5.0	4.8	4.3	4.2	4.7	1.3
Transport services	32	120.3	107.4	108.2	104.2	110.7	107.0	9.9	4.9	7.0	5.1	5.9	5.9	-3.3
Transport insurance	4	103.3	103.5	104.2	104.1	104.7	105.3	2.9	3.5	5.0	2.7	4.2	3.0	0.5
<b>Communication</b>	23	97.2	96.6	96.2	96.3	96.2	95.8	-2.0	-3.0	-4.2	-4.0	-3.8	-3.2	-0.4
<b>Recreational &amp; personal services</b>	208	106.7	107.0	107.4	107.5	107.7	107.6	3.4	3.4	3.3	3.2	3.2	3.0	-0.1
Package holidays & accommodation	48	103.5	103.8	104.1	104.0	104.1	104.1	1.8	2.1	2.0	2.0	2.1	1.7	-
Other recreational & personal services	160	107.7	107.9	108.3	108.5	108.8	108.7	3.8	3.8	3.7	3.5	3.5	3.4	-0.1
Catering services	118	107.2	107.4	107.7	107.9	108.2	108.2	3.7	3.7	3.6	3.4	3.4	3.3	-
Non-catering recreational & personal services	42	109.1	109.5	110.2	110.3	110.4	109.9	4.4	3.8	3.8	3.9	3.6	3.8	-0.5
<b>Miscellaneous &amp; other services</b>	84	109.6	110.9	113.3	113.3	113.6	113.8	3.9	4.0	3.8	4.0	4.1	4.0	0.2
Miscellaneous services	53	106.5	106.7	107.2	107.2	107.6	107.8	0.6	0.5	0.4	0.7	0.9	0.6	0.2
Medical services	12	112.3	112.6	113.2	113.2	113.3	114.3	5.0	5.1	4.9	4.7	4.7	4.8	0.8
Education	19	117.8	122.9	133.2	133.2	133.2	133.2	14.0	13.9	13.2	13.2	13.2	13.2	-
<b>Special aggregates</b>														
Durables	115	95.0	95.6	94.9	95.2	96.2	93.9	-2.3	-2.6	-2.1	-2.2	-3.0	-2.7	-2.5
Semi-durables	132	94.3	95.3	94.9	95.2	95.2	92.0	-1.8	-1.6	-2.1	-2.3	-2.1	-2.7	-3.4
Non-durables	76	104.0	104.1	104.9	105.1	105.4	105.6	1.8	1.6	2.3	2.4	2.7	2.9	0.1
Seasonal food	29	107.9	108.8	111.6	112.2	112.4	111.9	5.7	4.7	6.1	3.6	4.1	5.5	-0.5
Non-seasonal food	66	104.8	106.6	108.1	109.7	111.1	110.9	1.6	3.4	4.6	5.8	6.7	7.1	-0.2
Energy, food, alcoholic beverages & tobacco	224	110.3	110.8	112.0	113.3	114.0	114.5	1.8	2.8	4.0	4.6	4.5	5.2	0.4
Energy & unprocessed food	123	113.5	113.3	115.4	117.2	118.2	118.6	0.8	1.8	3.9	4.2	3.8	5.0	0.4
Energy & seasonal food	102	116.1	116.0	118.0	120.1	121.1	121.8	1.1	2.3	4.5	4.8	4.3	5.7	0.5
Tobacco	24	110.7	110.8	110.8	110.7	110.6	111.3	4.7	4.7	4.7	4.6	4.4	3.4	0.7
Housing, water, electricity, gas & other fuels	115	114.0	114.0	114.3	114.6	114.7	115.4	2.8	2.3	1.4	0.8	0.2	0.4	0.6
Education, health & social protection <sup>2</sup>	53	111.5	113.3	116.9	116.9	117.1	117.5	7.2	7.2	7.0	7.0	7.0	6.9	0.4
<i>All items excluding</i>														
Energy	927	103.8	103.9	104.3	104.4	105.0	104.1	2.0	1.8	2.0	1.8	1.9	1.9	-0.8
Energy, food, alcoholic beverages & tobacco	776	103.3	103.2	103.5	103.6	104.1	103.1	1.8	1.5	1.5	1.4	1.4	1.3	-1.0
Energy & unprocessed food	877	103.7	103.8	104.1	104.2	104.7	103.9	1.9	1.8	1.8	1.8	1.8	1.8	-0.8
Seasonal food	971	104.7	104.7	105.2	105.4	106.0	105.3	1.7	1.7	2.0	2.1	2.0	2.1	-0.7
Energy & seasonal food	898	103.6	103.7	104.1	104.2	104.7	103.9	1.8	1.7	1.8	1.8	1.8	1.8	-0.8
Tobacco	976	104.6	104.7	105.2	105.5	106.1	105.4	1.7	1.7	2.0	2.0	2.0	2.2	-0.7
Alcoholic beverages & tobacco	958	104.6	104.7	105.3	105.6	106.2	105.4	1.7	1.7	2.1	2.1	2.1	2.2	-0.8
Liquid fuels, vehicle fuels & lubricants	960	104.5	104.6	105.1	105.2	105.7	104.9	1.9	1.7	1.7	1.5	1.5	1.5	-0.8
Housing, water, electricity, gas & other fuels	885	103.6	103.7	104.3	104.5	105.2	104.3	1.6	1.7	2.2	2.3	2.3	2.4	-0.8
Education, health & social protection	947	104.4	104.4	104.7	105.0	105.6	104.9	1.5	1.5	1.8	1.8	1.8	1.9	-0.7

Key: - zero or negligible

<sup>2</sup> The coverage of this special aggregate has changed extensively since January 2000, when Social protection was first included and extensions to the Education and Health divisions also took effect. Health was further extended with effect from January 2001. Details are given in a series of Economic Trends articles available on the National Statistics website: [www.statistics.gov.uk/cpi](http://www.statistics.gov.uk/cpi)

<sup>1</sup> For further information on the composition of the indices shown, see 'The Consumer Prices Index: Goods and Services Indices and Special Aggregates', which can be downloaded from: [www.statistics.gov.uk/cpi/article.asp?id=1060](http://www.statistics.gov.uk/cpi/article.asp?id=1060)

# 6 CPI goods and services: the latest three years

Percentage change over 12 months

	Goods components					Services components					All services
	Food & non-alcoholic beverages	Alcoholic beverages & tobacco	Energy <sup>1</sup>	Non-energy industrial goods <sup>2</sup>	All goods	Housing services <sup>3</sup>	Travel & transport services <sup>3</sup>	Recreational & personal services <sup>3</sup>	Communication	Miscellaneous & other services <sup>3</sup>	
Weights	CHZR	CHZS	A9F3	A9ER	ICVH	A9FG	A9FJ	A9FL	CHZY	A9FQ	ICVI
2008	109	42	73	323	547	73	65	208	23	84	453
Monthly	D7G8	D7G9	DKL5	DKK3	D7NM	DKN2	DKN5	DKN7	D7GF	DKO4	D7NN
2005 Jan	0.4	2.5	9.0	-2.2	-0.2	3.5	5.3	3.2	-2.3	5.5	3.7
Feb	0.8	2.9	9.6	-2.6	-0.2	3.5	5.8	3.3	-2.7	5.6	3.8
Mar	1.7	2.2	10.1	-2.2	0.2	3.6	6.8	3.2	-2.9	5.5	3.9
Apr	1.0	2.0	11.5	-2.2	0.1	4.3	4.9	3.4	-3.2	6.5	4.0
May	1.4	2.3	8.3	-2.2	-0.1	4.3	6.3	3.4	-3.6	6.6	4.2
Jun	2.2	2.3	8.7	-2.1	0.2	4.2	6.0	3.1	-2.9	6.8	4.1
Jul	1.7	2.2	11.2	-1.9	0.5	4.4	6.9	3.2	-2.5	7.7	4.5
Aug	2.2	1.8	12.4	-2.1	0.6	4.4	7.5	3.1	-2.1	7.7	4.6
Sep	2.0	1.4	15.4	-2.2	0.7	4.4	6.3	3.2	-1.2	7.5	4.5
Oct	1.5	1.9	13.9	-2.1	0.6	4.0	7.2	3.3	-1.6	6.6	4.4
Nov	1.7	2.5	11.1	-2.0	0.4	3.9	5.8	3.1	-1.2	6.6	4.1
Dec	1.7	2.5	10.2	-2.1	0.3	4.0	3.4	3.1	-1.0	6.6	3.8
2006 Jan	1.2	2.3	12.8	-2.3	0.3	3.9	6.1	2.9	0.5	5.6	3.9
Feb	1.1	1.6	12.5	-1.7	0.6	3.9	4.8	2.9	0.4	5.6	3.7
Mar	-0.4	2.5	12.2	-1.9	0.2	3.9	4.4	2.9	0.5	5.7	3.7
Apr	0.3	2.5	14.4	-2.2	0.5	3.3	6.5	2.7	0.3	5.7	3.8
May	1.1	2.2	19.3	-1.9	1.3	3.3	2.8	2.9	-0.4	5.6	3.3
Jun	1.8	3.3	19.8	-1.7	1.7	3.4	3.2	2.9	-0.3	5.6	3.4
Jul	3.2	2.8	19.4	-2.0	1.8	3.4	2.4	2.9	0.3	4.9	3.2
Aug	3.4	3.3	17.9	-1.3	2.2	3.4	1.6	2.8	-0.7	4.7	2.9
Sep	4.0	3.4	11.6	-1.0	1.8	3.3	3.0	2.8	-0.2	5.3	3.2
Oct	4.7	3.2	9.8	-1.3	1.5	3.4	2.5	3.0	0.9	6.7	3.6
Nov	5.0	2.7	11.7	-1.1	1.8	3.5	3.7	3.1	0.7	6.4	3.7
Dec	4.6	2.7	14.9	-0.8	2.3	3.5	4.1	3.1	0.5	6.4	3.8
2007 Jan	3.9	3.5	12.8	-0.9	2.0	3.8	3.1	3.2	-1.8	6.1	3.6
Feb	4.4	4.2	11.8	-1.0	2.0	3.7	5.0	3.2	-2.8	6.1	3.8
Mar	5.6	4.4	11.6	-0.5	2.5	3.7	4.2	3.3	-2.8	6.1	3.7
Apr	6.0	4.5	7.9	-0.3	2.3	3.8	3.8	3.3	-3.7	4.5	3.3
May	5.0	4.2	4.4	-0.4	1.6	3.8	6.4	3.1	-3.2	4.4	3.6
Jun	4.8	3.4	3.3	-0.4	1.4	3.7	6.8	3.3	-3.9	4.4	3.7
Jul	2.8	3.4	0.9	-0.8	0.5	3.6	6.3	3.2	-5.0	4.4	3.5
Aug	3.0	3.1	-0.5	-1.1	0.1	3.5	7.6	3.4	-2.0	3.9	3.8
Sep	3.7	3.2	1.5	-1.2	0.4	3.5	4.9	3.4	-3.0	4.0	3.4
Oct	4.7	2.7	3.9	-1.1	1.0	3.7	5.9	3.3	-4.2	3.8	3.4
Nov	4.8	2.9	5.3	-1.2	1.1	3.7	4.6	3.2	-4.0	4.0	3.2
Dec	5.4	2.7	4.4	-1.3	1.1	3.6	5.0	3.2	-3.8	4.1	3.3
2008 Jan	6.1	2.2	5.8	-1.4	1.3	3.7	5.1	3.0	-3.2	4.0	3.3

Key: - zero or negligible

<sup>3</sup> For further information on all of these services components, see 'The Consumer Prices Index: Goods and Services Indices and Special Aggregates', which can be downloaded from: [www.statistics.gov.uk/cci/article.asp?id=1060](http://www.statistics.gov.uk/cci/article.asp?id=1060)

<sup>1</sup> Comprises 'Electricity, gas and other fuels' (group 04.5) and 'Fuels and lubricants' (class 07.2.2).

<sup>2</sup> Comprises all other goods elements of the CPI. For further information, see 'The Consumer Prices Index: Goods and Services Indices and Special Aggregates', which can be downloaded from: [www.statistics.gov.uk/cci/article.asp?id=1060](http://www.statistics.gov.uk/cci/article.asp?id=1060)

Source: National Statistics

# 7 HICP<sup>1</sup> - International comparisons: EU countries

Percentage change over 12 months

	Austria	Belgium	Bulgaria	Cyprus	Czech Republic	Denmark	Estonia	Finland	France	Germany	Greece	Hungary	Ireland	Italy	Latvia
	D7SK	D7SL	GHY8	D7RO	D7RP	D7SM	D7RQ	D7SN	D7SO	D7SP	D7SQ	D7RR	D7SS	D7ST	D7RS
2005	2.1	2.5	6.0	2.0	1.6	1.7	4.1	0.8	1.9	1.9	3.5	3.5	2.2	2.2	6.9
2006	1.7	2.3	7.4	2.2	2.0	1.9	4.4	1.3	1.9	1.8	3.3	4.0	2.7	2.2	6.6
2007	..	..	..	..	..	..	..	..	..	..	..	..	..	..	..
2006 Jan	1.5	2.8	7.6	2.0	2.4	2.0	4.7	1.2	2.3	2.1	3.0	2.5	2.5	2.2	7.6
Feb	1.5	2.8	9.4	2.3	2.4	2.1	4.5	1.3	2.0	2.1	3.1	2.3	2.7	2.2	7.0
Mar	1.3	2.2	9.1	2.6	2.4	1.8	4.0	1.2	1.7	1.9	3.3	2.4	2.8	2.2	6.6
Apr	2.1	2.6	8.5	2.5	2.3	1.8	4.3	1.5	2.0	2.3	3.5	2.4	2.7	2.3	6.1
May	2.1	2.8	9.0	2.5	2.8	2.1	4.6	1.7	2.4	2.1	3.3	2.9	3.0	2.3	7.1
Jun	1.9	2.5	8.4	2.6	2.3	2.1	4.4	1.5	2.2	2.0	3.4	2.9	2.9	2.4	6.3
Jul	2.0	2.4	7.8	2.8	2.4	2.0	4.5	1.4	2.2	2.1	3.9	3.2	2.9	2.3	6.9
Aug	2.1	2.3	7.0	2.7	2.6	1.9	5.0	1.3	2.1	1.8	3.4	4.7	3.2	2.3	6.8
Sep	1.3	1.9	5.4	2.2	2.2	1.5	3.8	0.8	1.5	1.0	3.1	5.9	2.2	2.4	5.9
Oct	1.3	1.7	5.2	1.7	0.8	1.4	3.8	0.9	1.2	1.1	3.1	6.3	2.2	1.9	5.6
Nov	1.6	2.0	5.9	1.3	1.0	1.8	4.7	1.3	1.6	1.5	3.2	6.4	2.4	2.0	6.3
Dec	1.6	2.1	6.1	1.5	1.5	1.7	5.1	1.2	1.7	1.4	3.2	6.6	3.0	2.1	6.8
2007 Jan	1.7	1.7	6.8	1.4	1.4	1.8	5.0	1.3	1.4	1.8	3.0	8.4	2.9	1.9	7.1
Feb	1.7	1.8	4.6	1.2	1.7	1.9	4.6	1.2	1.2	1.9	3.0	9.0	2.6	2.1	7.2
Mar	1.9	1.8	4.4	1.4	2.1	1.9	5.6	1.6	1.2	2.0	2.8	9.0	2.9	2.1	8.5
Apr	1.8	1.8	4.4	1.6	2.7	1.7	5.6	1.5	1.3	2.0	2.6	8.7	2.9	1.8	8.8
May	1.9	1.3	4.5	1.9	2.4	1.7	5.9	1.3	1.2	2.0	2.6	8.4	2.7	1.9	7.8
Jun	1.9	1.3	5.3	1.7	2.6	1.3	6.0	1.4	1.3	2.0	2.6	8.5	2.8	1.9	8.9
Jul	2.0	1.3	6.8	2.3	2.5	1.1	6.5	1.6	1.2	2.0	2.7	8.3	2.7	1.7	9.5
Aug	1.7	1.2	9.3	2.2	2.6	0.9	6.1	1.3	1.3	2.0	2.7	7.1	2.3	1.7	10.2
Sep	2.1	1.4	11.0	2.3	2.8	1.2	7.5	1.7	1.6	2.7	2.9	6.4	2.9	1.7	11.5
Oct	2.9	2.2	10.6	2.7	4.0	1.8	8.7	1.8	2.1	2.7	3.0	6.9	3.0	2.3	13.2
Nov	3.2	2.9	11.4	3.2	5.1	2.5	9.3	2.2	2.6	3.3	3.9	7.2	3.5	2.6	13.7
Dec	3.5*	3.1	11.6	3.7	5.5	2.4	9.7	1.9	2.8	3.1	3.9	7.4	..	2.8	14.0
2008 Jan	..	..	..	..	..	..	..	..	..	..	..	..	..	..	..

	Lithuania	Luxembourg	Malta	Netherlands	Poland	Portugal	Romania	Slovakia	Slovenia	Spain	Sweden	United Kingdom <sup>1</sup>	EICP <sup>2</sup> EU 25 average <sup>3</sup>	EICP <sup>2</sup> EU 27 average <sup>3</sup>	Monetary Union Area average <sup>4</sup>
	D7RT	D7SU	D7RU	D7SV	D7RV	D7SX	GHY7	D7RW	D7RX	D7SY	D7SZ	D7G7	D7RY	GJ2E	D7SR
2005	2.7	3.8	2.5	1.5	2.2	2.1	9.1	2.8	2.5	3.4	0.8	2.1	2.2	..	2.2
2006	3.8	3.0	2.6	1.7	1.3	3.0	6.6	4.3	2.5	3.6	1.5	2.3	2.2	..	2.2
2007	..	..	..	..	..	..	..	..	..	..	..	2.3	..	..	..
2006 Jan	3.5	4.1	2.4	1.8	0.9	2.7	9.0	4.1	2.6	4.2	1.1	1.9	2.3	..	2.4
Feb	3.4	3.9	2.3	1.4	0.9	3.0	8.6	4.3	2.3	4.1	1.1	2.0	2.2	..	2.3
Mar	3.1	3.7	2.9	1.4	0.9	3.8	8.5	4.3	2.0	3.9	1.5	1.8	2.1	..	2.2
Apr	3.4	3.5	3.5	1.8	1.2	3.7	7.0	4.4	2.8	3.9	1.8	2.0	2.3	..	2.5
May	3.6	3.6	3.5	1.8	1.5	3.7	7.3	4.8	3.4	4.1	1.9	2.2	2.4	..	2.5
Jun	3.7	3.9	3.3	1.8	1.5	3.5	7.2	4.5	3.0	4.0	1.9	2.5	2.4	..	2.5
Jul	4.4	3.4	3.6	1.7	1.4	3.0	6.2	5.0	1.9	4.0	1.8	2.4	2.4	..	2.4
Aug	4.3	3.1	3.0	1.9	1.7	2.7	6.1	5.0	3.1	3.8	1.6	2.5	2.3	..	2.3
Sep	3.3	2.0	3.1	1.5	1.4	3.0	5.5	4.5	2.5	2.9	1.2	2.4	1.9	..	1.7
Oct	3.7	0.6	1.7	1.3	1.1	2.6	4.8	3.1	1.5	2.6	1.2	2.4	1.8	..	1.6
Nov	4.4	1.8	0.9	1.6	1.3	2.4	4.7	3.7	2.4	2.7	1.5	2.7	2.1	..	1.9
Dec	4.5	2.3	0.8	1.7	1.4	2.5	4.9	3.7	3.0	2.7	1.4	3.0	2.1	..	1.9
2007 Jan	4.0	2.3	1.2	1.2	1.6	2.6	4.1	2.2	2.8	2.4	1.6	2.7	..	2.1	1.8
Feb	4.4	1.8	0.8	1.4	1.9	2.3	3.9	2.0	2.3	2.5	1.7	2.8	..	2.1	1.8
Mar	4.8	2.4	0.5	1.9	2.4	2.4	3.7	2.1	2.6	2.5	1.6	3.1	..	2.3	1.9
Apr	4.9	2.5	-1.1	1.9	2.2	2.8	3.8	2.0	2.9	2.5	1.6	2.8	..	2.2	1.9
May	5.0	2.3	-1.0	2.0	2.3	2.4	3.9	1.5	3.1	2.4	1.2	2.5	..	2.1	1.9
Jun	5.0	2.3	-0.6	1.8	2.6	2.4	3.9	1.5	3.8	2.5	1.3	2.4	..	2.1	1.9
Jul	5.1	2.0	-0.2	1.4	2.5	2.3	4.1	1.2	4.0	2.3	1.4	1.9	..	2.0	1.8
Aug	5.6	1.9	0.6	1.1	2.1	1.9	5.0	1.2	3.4	2.2	1.2	1.8	..	1.9	1.7
Sep	7.1	2.5	0.9	1.3	2.7	2.0	6.1	1.7	3.6	2.7	1.6	1.8	..	2.2	2.1
Oct	7.6	3.6	1.6	1.6	3.1	2.5	6.9	2.4	5.1	3.6	1.9	2.1	..	2.7	2.6
Nov	7.9	4.0	2.9	1.8	3.7	2.8	6.8	2.3	5.7	4.1	2.4	2.1	..	3.1	3.1
Dec	8.2	4.3	3.1	1.6*	4.2	2.7	6.7	2.5	5.7	4.3	2.5	2.1	..	3.2*	3.1*
2008 Jan	..	..	..	..	..	..	..	..	..	..	..	2.2	..	..	..

Key: - zero or negligible .. Not available \* Provisional

† Date of earliest revision † Estimated

1 Published as the CPI in the UK.

2 The EICP (European Index of Consumer Prices) is the official EU aggregate. It covers 15 member states until April 2004, 25 member states from May 2004, and 27 members from Jan 2007, the new member states being integrated using a chain index formula.

The EU 25 annual average for 2004 is calculated from the EU 15 average from January to April and the EU 25 average from May to December.

3 The coverage of the European Union was extended to include Cyprus, Czech Republic, Estonia, Hungary, Latvia, Lithuania, Malta, Poland, Slovakia and Slovenia from 1 May 2004 and Bulgaria and Romania from 1 Jan 2007.

4 The coverage of the Monetary Union Area index was extended to include Greece with effect from Jan 2001.

Sources: National Statistics; Eurostat

	Weights	Index (January 1987=100)						Percentage change over 12 months						Percentage change over 1 month
		2007	2007	2007	2007	2007	2007	2007	2007	2007	2007	2007	2007	2008
		Aug	Sep	Oct	Nov	Dec	Jan	Aug	Sep	Oct	Nov	Dec	Jan	Jan
<b>ALL ITEMS</b>	1 000	207.3	208.0	208.9	209.7	210.9	209.8	4.1	3.9	4.2	4.3	4.0	4.1	-0.5
Food and catering	152	183.5	185.2	187.3	188.8	190.2	190.2	3.3	4.0	4.6	4.8	5.3	5.7	-
Alcohol and tobacco	95	257.9	258.2	257.7	257.3	256.9	258.0	3.5	3.6	3.2	3.1	3.0	2.7	0.4
Housing and household expenditure	408	249.4	251.3	251.9	253.0	254.8	252.6	7.2	6.5	6.2	6.0	5.0	5.0	-0.9
Personal expenditure	83	132.2	133.7	134.1	134.3	134.0	130.7	0.7	0.5	0.5	0.4	0.8	0.5	-2.5
Travel and leisure	262	185.2	183.7	184.7	185.4	186.8	186.7	1.0	1.4	2.8	3.1	3.2	3.3	-0.1
Consumer durables <sup>1</sup>	109	91.9	93.7	92.8	93.2	94.8	89.8	-1.2	-1.2	-1.0	-1.4	-2.0	-1.4	-5.3
Seasonal food	19	152.5	153.2	158.0	159.0	160.5	159.9	7.3	5.9	8.0	4.8	6.4	7.8	-0.4
Food excluding seasonal	86	164.7	167.0	168.7	170.6	172.1	172.2	2.6	3.9	4.4	5.4	6.0	6.4	0.1
All items excluding seasonal food	981	208.7	209.4	210.2	211.0	212.2	211.1	4.0	3.9	4.2	4.2	4.0	4.0	-0.5
All items excluding food	895	215.0	215.5	216.2	216.9	218.0	216.8	4.2	3.9	4.2	4.2	3.8	3.8	-0.6
All goods	478	156.6	157.7	158.1	159.3	160.4	158.8	0.9	1.5	2.4	2.8	2.8	3.3	-1.0
All services	377	258.8	258.4	259.9	259.9	261.2	261.9	4.0	3.6	3.2	2.7	2.8	2.8	0.3
<b>Other indices</b>														
All items excluding:														
mortgage interest payments (RPIX)	945	200.1	200.8	201.6	202.4	203.5	202.7	2.7	2.8	3.1	3.2	3.1	3.4	-0.4
housing	762	182.9	183.5	184.3	185.1	186.3	185.2	2.0	2.2	2.6	2.6	2.5	2.9	-0.6
mortgage interest payments and indirect taxes (RPIY) <sup>2</sup>		190.9	191.6	192.3	193.2	194.4	193.5	2.6	2.8	3.0	3.0	3.1	3.3	-0.5
mortgage interest payments and council tax	905	197.0	197.7	198.5	199.3	200.5	199.7	2.6	2.8	3.1	3.1	3.1	3.4	-0.4
mortgage interest payments and depreciation <sup>3</sup>	895	193.3	193.8	194.6	195.4	196.6	195.7	2.3	2.4	2.8	2.8	2.8	3.1	-0.5
<b>Food</b>	105	163.0	165.0	167.4	169.1	170.6	170.5	3.4	4.2	5.1	5.3	6.1	6.6	-0.1
Bread	4	174.4	180.3	181.7	189.1	195.9	194.5	5.6	8.1	8.9	11.6	14.9	14.3	-0.7
Cereals	3	147.1	149.1	149.0	152.7	153.2	153.2	2.2	2.9	3.7	5.5	5.1	6.9	-
Biscuits and cakes	6	172.8	172.2	179.4	180.6	183.6	183.4	1.9	1.9	6.2	6.0	7.1	7.0	-0.1
Beef	4	141.2	139.8	139.6	140.1	140.1	141.2	0.8	-1.3	-2.6	-1.6	-1.1	-1.5	0.8
Lamb	2	191.6	186.0	183.3	183.1	186.7	187.3	0.9	-1.9	-3.0	-2.8	-1.9	-1.1	0.3
of which home-killed lamb	1	195.1	189.9	185.8	182.6	188.0	187.0	-0.1	-1.0	-2.0	-4.5	-3.3	-3.3	-0.5
imported lamb	1	184.2	178.4	177.0	179.7	181.4	183.5	1.9	-2.8	-4.0	-1.0	-0.6	1.1	1.2
Pork	1	153.2	160.6	160.2	159.3	162.4	164.2	-3.6	3.2	0.3	2.0	3.6	3.1	1.1
Bacon	2	182.1	176.7	190.0	188.9	191.2	190.7	-1.6	-4.3	1.5	-0.5	0.6	0.5	-0.3
Poultry	3	112.6	110.4	116.9	118.9	119.4	117.6	1.9	3.4	6.7	9.6	8.7	9.9	-1.5
Other meat	6	148.5	148.6	150.4	150.6	152.0	151.3	0.3	0.4	1.7	1.5	1.5	2.0	-0.5
Fish	4	173.7	174.8	178.4	179.0	176.6	180.9	4.1	4.3	5.5	6.0	3.9	6.3	2.4
of which fresh fish	2	191.5	188.9	194.6	193.2	190.4	196.3	7.2	4.6	6.3	6.1	5.4	9.8	3.1
processed fish	2	157.1	161.4	163.2	165.6	163.6	166.4	1.0	4.0	4.7	6.0	2.5	2.7	1.7
Butter	1	169.8	199.8	203.5	230.4	235.2	236.8	-2.3	15.2	17.2	32.6	35.1	36.2	0.7
Oils and fats	1	141.4	154.5	156.2	154.1	153.7	154.1	-2.9	7.8	7.9	5.7	5.5	5.5	0.3
Cheese	3	177.2	182.0	185.2	191.5	196.1	193.6	0.5	3.5	5.4	8.8	11.2	9.7	-1.3
Eggs	1	190.8	197.0	214.0	231.3	233.0	232.8	14.4	17.2	26.2	35.7	30.2	30.3	-0.1
Milk, fresh	5	194.0	217.8	219.2	220.7	220.0	220.3	3.0	15.7	16.0	16.9	16.4	16.6	0.1
Milk products	4	153.8	156.0	156.5	161.5	164.7	165.2	4.3	5.5	6.4	9.3	12.0	13.9	0.3
Tea	1	157.5	160.4	161.6	160.1	156.1	155.4	-2.2	-1.2	-0.6	-0.8	-3.3	-1.2	-0.4
Coffee and other hot drinks	1	125.8	126.1	122.6	125.3	125.4	124.0	2.0	0.9	-2.1	1.4	-0.4	1.3	-1.1
Soft drinks	11	201.1	200.3	200.7	199.5	199.9	200.2	5.3	3.5	3.5	3.0	3.1	3.7	0.2
Sugar and preserves	1	162.0	163.6	164.5	166.8	166.5	167.9	3.3	3.3	3.8	4.3	3.7	4.1	0.8
Sweets and chocolates	10	200.9	201.6	201.3	203.3	206.2	207.2	3.7	4.0	4.1	5.3	6.7	6.7	0.5
Potatoes	5	163.3	162.5	162.5	166.5	167.4	168.7	8.1	7.1	5.0	3.4	3.3	6.1	0.8
of which unprocessed potatoes	2	151.3	153.9	154.0	155.7	163.0	167.7	9.1	8.8	6.7	3.3	7.2	11.3	2.9
potato products	3	164.2	161.0	161.0	166.4	162.8	161.6	8.6	6.6	4.5	3.8	1.2	2.7	-0.7
Vegetables other than potatoes	9	153.1	151.0	152.5	152.7	156.3	157.5	13.4	10.8	9.9	6.0	9.8	7.7	0.8
of which fresh vegetables	7	139.8	137.1	137.6	136.9	140.2	141.1	14.7	12.0	10.9	5.5	9.9	7.0	0.6
processed vegetables	2	188.7	189.8	195.9	200.6	204.9	207.2	9.1	6.7	7.0	7.9	9.8	10.2	1.1
Fruit	7	144.7	149.7	158.9	160.6	158.6	153.3	0.0	-0.3	4.5	1.5	1.0	4.0	-3.3
of which fresh fruit	6	141.4	146.7	157.5	159.3	157.3	151.4	-0.1	-0.5	5.8	1.7	1.3	5.1	-3.8
processed fruit	1	150.1	153.0	150.7	151.6	149.6	148.9	0.1	1.2	-3.1	0.6	-1.1	-2.7	-0.5
Other foods	10	152.4	153.8	154.7	154.5	156.4	156.7	0.7	2.1	1.4	1.8	3.2	3.9	0.2
<b>Catering</b>	47	254.4	255.1	256.3	257.2	258.1	258.6	3.2	3.4	3.4	3.5	3.6	3.6	0.2
Restaurant meals	25	248.2	248.8	250.4	250.8	251.3	251.3	2.9	3.3	3.4	3.3	3.2	2.9	-
Canteen meals	4	314.0	318.2	318.0	319.0	318.4	319.8	5.3	5.5	5.1	4.6	4.5	4.1	0.4
Take-aways and snacks	18	244.1	244.5	245.4	247.0	248.5	249.3	3.2	3.2	3.2	3.7	3.9	4.2	0.3
<b>Alcoholic drink</b>	66	220.5	220.8	220.2	219.8	219.3	220.1	3.0	3.1	2.6	2.5	2.3	2.3	0.4
Beer	34	242.0	242.0	241.1	241.1	241.3	240.6	3.8	3.7	3.0	2.8	2.6	2.5	-0.3
on sales	29	262.9	263.4	263.2	263.1	263.9	263.0	4.1	4.2	3.8	3.5	3.5	3.2	-0.3
off sales	5	151.4	149.6	146.2	146.8	145.1	145.1	2.4	1.0	-1.9	-1.1	-2.2	-1.6	-
Wines and spirits	32	193.1	193.5	193.2	192.5	191.5	193.4	2.2	2.4	2.0	2.2	2.1	2.2	1.0
on sales	18	244.7	245.2	245.2	245.2	245.4	245.6	3.4	3.4	3.2	2.9	2.8	2.7	0.1
off sales	14	159.2	159.6	158.9	157.5	155.5	159.0	0.6	1.1	0.6	1.1	1.2	1.5	2.3

Key: - zero or negligible

Index date for January: 15 January 2008

1 Consumer durables: Furniture, furnishings, electrical appliances and other household equipment, men's, women's and children's outerwear, footwear, audio-visual equipment, CDs and tapes, toys, photographic and sports goods.

2 The taxes excluded are council tax, VAT, duties, vehicle excise duty, insurance tax and air passenger duty. There are no weights available for RPIY.

3 This series has been constructed using the index for all items excluding mortgage interest payments prior to February 1995.

continued

	Weights	Index (January 1987=100)						Percentage change over 12 months						Percentage change over 1 month
		2007	2007					2007	2007					2008
			Aug	Sep	Oct	Nov	Dec		Jan	Aug	Sep	Oct	Nov	
<b>Tobacco</b>	29	363.9	364.2	364.3	364.1	363.6	366.1	4.7	4.7	4.7	4.6	4.5	3.4	0.7
Cigarettes	26	372.0	372.4	372.5	372.3	371.7	374.3	4.7	4.8	4.8	4.7	4.5	3.5	0.7
Other tobacco	3	288.5	288.6	288.8	288.9	288.6	289.9	4.3	4.3	4.3	4.4	4.2	2.8	0.5
<b>Housing</b>	238	337.0	338.4	339.6	340.6	341.5	340.6	11.0	9.9	9.9	9.9	8.8	7.9	-0.3
Rent	53	289.6	289.9	291.2	291.7	291.6	293.1	3.2	3.3	3.7	3.7	3.6	3.8	0.5
Mortgage interest payments	55	406.8	409.5	411.3	413.9	416.5	406.5	30.2	24.9	24.5	24.4	19.8	15.6	-2.4
Depreciation (Jan 1995 = 100)	50	300.3	302.9	304.3	305.5	305.5	306.3	10.0	9.7	9.3	9.3	8.7	8.3	0.3
Council tax and rates	40	292.0	292.0	292.0	292.0	292.0	292.0	4.0	4.0	4.0	4.0	4.0	4.0	-
Water and other charges	12	377.2	377.2	377.2	377.2	377.2	377.2	6.5	6.5	6.5	6.5	6.5	6.5	-
Repairs and maintenance charges	12	330.4	331.1	333.5	334.6	335.4	339.5	5.1	5.0	5.2	5.4	5.2	4.8	1.2
Do-it-yourself materials	9	166.6	167.3	167.3	167.1	168.4	170.8	4.3	3.9	4.1	3.7	3.7	4.9	1.4
Dwelling insurance and ground rent	7	289.2	292.4	291.7	292.1	301.7	309.5	3.3	4.2	4.5	4.3	7.9	9.9	2.6
<b>Fuel and light</b>	39	206.2	206.1	206.3	208.1	208.3	209.7	0.3	-1.0	-3.8	-5.0	-6.5	-5.8	0.7
Coal and solid fuels	1	198.4	200.8	206.5	210.5	214.7	217.3	7.1	7.0	4.7	5.5	7.6	8.8	1.2
Electricity	18	196.2	195.9	195.8	195.8	195.8	196.6	2.6	1.1	-1.5	-3.4	-4.5	-4.6	0.4
Gas	18	213.4	211.8	211.0	211.1	211.2	211.7	-0.8	-3.9	-8.7	-11.6	-13.2	-13.2	0.2
Oil and other fuels	2	262.4	276.3	285.3	319.1	320.4	335.4	-6.3	3.4	14.4	33.0	28.5	42.6	4.7
<b>Household goods</b>	66	148.3	151.7	149.6	151.0	156.0	148.1	1.4	1.9	2.4	2.1	0.9	2.6	-5.1
Furniture	23	168.5	177.0	171.1	175.7	187.0	168.0	3.0	4.5	4.3	4.3	-0.4	3.4	-10.2
Furnishings	11	161.7	163.8	161.9	159.0	168.0	159.7	1.6	3.5	2.4	0.4	3.4	3.7	-4.9
Electrical appliances	8	72.3	73.6	73.1	73.4	72.7	70.6	-5.0	-6.8	-2.1	-1.1	-0.8	-0.8	-2.9
Other household equipment	4	145.6	145.2	145.8	145.2	146.7	144.4	4.0	2.6	3.9	1.9	3.5	3.9	-1.6
Household consumables	13	160.7	161.1	161.4	162.0	162.2	162.2	0.7	0.6	0.8	0.7	0.6	0.4	-
Pet care	7	173.7	175.4	175.8	178.9	179.9	179.9	2.4	2.5	2.6	4.4	4.7	5.6	-
<b>Household services</b>	65	196.2	198.0	201.3	201.8	202.0	202.8	3.5	3.4	2.4	2.9	2.9	3.3	0.4
Postage	1	212.7	212.7	212.7	212.7	212.7	212.7	12.6	6.2	6.2	6.2	6.2	6.2	-
Telephones, telemessages, etc	22	85.8	85.5	85.1	85.2	85.3	84.9	-2.4	-2.6	-4.0	-3.6	-3.3	-3.2	-0.5
Domestic services	14	304.8	305.9	307.9	309.3	309.7	311.9	4.4	4.2	4.4	4.6	4.4	3.9	0.7
Fees and subscriptions	28	292.7	298.9	310.4	311.1	311.4	314.3	7.5	7.6	6.4	7.0	7.0	8.0	0.9
<b>Clothing and footwear</b>	44	92.8	94.5	94.5	94.7	94.0	89.8	-0.9	-1.0	-1.5	-1.7	-1.1	-1.6	-4.5
Men's outerwear	9	94.9	96.1	96.4	96.9	96.8	92.1	0.1	-1.7	-1.1	-1.3	-0.7	-0.4	-4.9
Women's outerwear	15	65.7	67.9	67.3	67.6	66.3	62.3	-3.1	-2.7	-4.7	-4.2	-3.9	-4.4	-6.0
Childrens' outerwear	5	87.8	89.9	91.5	91.7	92.2	88.6	-1.8	1.0	2.0	1.3	1.5	1.4	-3.9
Other clothing	6	149.6	150.9	150.1	150.7	150.6	148.0	0.5	0.3	0.3	-0.3	-0.2	-0.1	-1.7
Footwear	9	110.3	110.7	111.1	110.8	109.9	105.9	1.8	0.4	0.7	0.4	1.5	-0.8	-3.6
<b>Personal goods and services</b>	39	215.2	216.1	217.3	217.4	218.1	217.8	2.5	2.5	2.9	2.9	2.9	2.8	-0.1
Personal articles	11	139.4	140.7	140.2	140.8	141.7	140.4	2.7	2.6	2.4	2.8	2.6	2.9	-0.9
Chemists goods	15	192.1	192.4	194.2	193.4	193.9	193.4	1.0	0.9	1.5	1.2	1.6	1.3	-0.3
Personal services	13	372.4	373.2	376.8	377.8	378.0	380.6	4.2	4.4	4.9	4.9	4.8	4.6	0.7
<b>Motoring expenditure</b>	133	189.4	188.6	190.0	192.5	193.3	194.9	-0.4	1.1	3.5	4.7	4.7	5.1	0.8
Purchase of motor vehicles	53	102.1	101.8	101.4	101.8	100.8	101.1	-3.3	-3.5	-3.6	-3.0	-3.5	-4.2	0.3
Maintenance of motor vehicles	20	311.4	311.8	312.4	313.3	314.3	319.6	5.5	5.2	4.8	4.3	4.3	5.2	1.7
Petrol and oil	36	280.0	276.7	284.2	295.1	301.4	304.8	-2.2	3.0	11.7	16.5	16.4	19.0	1.1
Vehicle tax and insurance	24	297.9	298.5	299.6	299.4	300.7	302.4	5.0	5.4	6.1	4.4	5.4	4.6	0.6
<b>Fares and other travel costs</b>	20	265.8	242.7	244.3	237.0	249.9	242.0	10.7	6.0	7.1	4.8	6.6	5.4	-3.2
Rail fares	5	265.0	264.8	263.3	263.3	263.2	272.0	4.3	6.8	6.3	4.9	5.5	5.7	3.3
Bus and coach fares	4	277.4	277.0	274.5	275.3	277.0	282.7	8.9	7.7	5.9	5.3	5.6	4.7	2.1
Other travel costs	11	246.2	210.7	214.5	203.0	222.5	205.7	12.9	4.7	7.6	4.5	6.9	5.5	-7.6
<b>Leisure goods</b>	41	89.2	89.1	88.9	88.6	89.1	87.9	-2.6	-3.0	-2.5	-3.3	-3.4	-3.4	-1.3
Audio-visual equipment	8	14.5	14.2	14.1	13.9	13.9	13.3	-15.7	-17.4	-16.1	-17.8	-17.8	-20.4	-4.3
CDs and tapes	5	100.5	100.7	98.4	100.4	102.9	98.1	4.3	3.5	1.0	1.2	1.1	-3.2	-4.7
Toys, photographic and sports goods	12	86.8	87.1	87.3	86.7	86.8	86.0	-3.7	-2.9	-2.6	-2.7	-2.9	-3.3	-0.9
Books and newspapers	10	260.8	262.5	263.1	261.5	262.9	264.2	4.7	3.9	4.4	3.3	3.3	6.9	0.5
Gardening products	6	144.8	144.9	145.1	145.1	146.4	147.0	0.6	0.9	1.7	0.6	0.8	1.4	0.4
<b>Leisure services</b>	68	276.1	278.1	279.4	279.7	280.3	280.1	3.3	3.3	3.3	3.3	3.3	3.1	-0.1
Television licences and rentals	11	167.7	167.7	169.7	169.7	169.7	169.0	1.8	1.8	2.2	2.2	2.1	1.7	-0.4
Entertainment and other recreation	16	371.0	379.8	379.5	379.6	380.7	381.1	6.5	5.9	5.0	5.4	5.1	6.0	0.1
Foreign holidays (Jan 1993 = 100)	34	173.1	173.5	174.5	174.8	175.3	175.2	2.2	2.6	2.9	2.6	2.9	2.2	-0.1
UK holidays (Jan 1994 = 100)	7	171.4	171.8	171.9	172.0	172.0	172.2	3.4	3.8	3.4	3.4	3.1	2.8	0.1

Key: - zero or negligible

Source: National Statistics

# 9 RPI goods and services<sup>1</sup>: the latest three years

Percentage change over 12 months

	Goods components				All goods	Services components				All services
	Food	Alcohol & tobacco	Petrol & oil <sup>2</sup>	Other goods <sup>3</sup>		Rent	Utilities <sup>4</sup>	"Shop" services <sup>5</sup>	"Non-shop" services <sup>6</sup>	
<b>Weights</b>										
	CZGZ	CBVW	DOHB	DOHC	DOHD	CZXD	DOHE	DOHF	DOHG	DOHH
2007	105	95	38	240	478	53	76	133	115	377
<b>Monthly</b>										
	CCYY	CZBK	DOGQ	DOGI	DOGD	CZCQ	DOGF	DOGG	DOGH	DOGE
2005 Jan	0.3	2.7	5.2	-2.8	-0.5	3.0	6.4	4.2	2.7	4.0
Feb	0.8	3.0	6.4	-2.9	-0.4	3.1	5.9	4.3	2.3	3.8
Mar	1.4	2.4	8.1	-2.2	0.2	3.1	5.4	4.3	2.6	3.8
Apr	0.8	2.6	11.4	-2.5	0.1	3.6	5.8	4.3	2.7	4.0
May	1.3	2.7	5.5	-2.5	-0.1	3.6	5.7	4.3	3.0	4.1
Jun	2.0	2.7	6.6	-2.3	0.2	3.5	5.8	4.3	2.7	4.0
Jul	1.4	2.7	11.3	-1.7	0.7	3.8	5.8	4.3	2.7	4.0
Aug	1.7	2.5	13.7	-2.0	0.8	3.8	5.9	4.1	2.0	3.7
Sep	1.5	2.5	18.4	-1.9	1.1	3.8	6.5	4.4	2.0	3.9
Oct	1.0	2.7	14.0	-1.7	0.9	3.2	7.4	4.5	2.1	4.1
Nov	1.3	2.9	8.6	-1.4	0.7	3.2	7.7	4.6	1.8	4.1
Dec	1.1	2.9	8.0	-1.3	0.7	3.2	7.3	4.6	0.6	3.7
2006 Jan	0.8	2.8	13.6	-1.4	1.0	3.0	7.2	4.3	1.3	3.8
Feb	0.8	2.5	12.9	-1.1	1.1	3.0	7.4	4.2	1.2	3.8
Mar	-0.5	3.0	10.1	-1.2	0.6	3.0	8.6	4.1	1.7	4.1
Apr	0.2	2.7	9.6	-1.3	0.7	2.8	9.9	4.2	2.3	4.6
May	0.9	2.7	13.8	-0.8	1.4	2.8	11.7	4.1	1.5	4.6
Jun	1.5	3.2	12.4	-0.5	1.6	2.9	12.9	4.1	1.8	5.0
Jul	2.7	3.0	10.7	-0.9	1.5	3.0	13.8	4.1	1.5	5.0
Aug	2.9	3.4	7.6	-0.2	1.8	3.0	13.9	4.0	1.7	5.1
Sep	3.5	3.4	-3.4	0.4	1.2	2.9	14.2	4.0	2.3	5.3
Oct	4.2	3.3	-7.6	-	0.8	2.9	15.1	4.2	3.3	5.8
Nov	4.5	3.2	-4.6	0.1	1.2	3.0	15.0	4.1	3.9	6.0
Dec	4.1	3.2	0.6	0.4	1.8	3.0	15.0	4.1	4.0	6.1
2007 Jan	3.7	3.6	-2.6	-0.3	1.1	3.3	14.2	4.2	4.6	6.1
Feb	4.0	4.0	-4.3	-	1.2	3.2	13.7	4.3	5.4	6.3
Mar	5.1	4.1	-1.7	0.5	2.0	3.2	12.2	4.4	4.8	5.9
Apr	5.6	4.5	-1.7	0.6	2.1	3.1	8.5	4.1	4.2	4.9
May	4.8	4.1	-2.0	0.6	1.9	3.2	5.3	4.1	5.1	4.6
Jun	4.8	3.7	0.3	0.8	2.2	3.3	3.0	4.2	5.0	4.1
Jul	3.1	3.7	-1.8	-0.2	1.2	3.3	1.3	3.9	5.1	3.7
Aug	3.4	3.5	-2.4	-0.5	0.9	3.2	1.3	4.2	5.8	4.0
Sep	4.2	3.6	2.9	-0.6	1.5	3.3	0.3	4.1	5.0	3.6
Oct	5.1	3.2	11.7	-0.5	2.4	3.7	-2.0	4.1	5.1	3.2
Nov	5.3	3.1	17.4	-0.6	2.8	3.7	-3.1	4.2	4.5	2.7
Dec	6.1	3.0	17.0	-0.9	2.8	3.6	-3.7	4.1	5.3	2.8
2008 Jan	6.6	2.7	20.2	-0.6	3.3	3.8	-3.6	4.2	5.0	2.8

**Key:** - zero or negligible

1 All components of the RPI are included in the above breakdown with the exception of mortgage interest payments, council tax and depreciation.

2 Including fuel oil.

3 The 'other goods' category comprises DIY materials, coal & solid fuels, household goods, clothing & footwear, personal articles, chemists goods, purchase of motor vehicles and leisure goods.

4 The 'utilities' category comprises water, electricity, gas, postage, telephone charges and rail fares.

5 The 'shop services' category comprises catering, repairs & maintenance charges, domestic services, personal services, maintenance of motor vehicles, TV licence & rentals and entertainment & recreation charges.

6 The 'non-shop services' category comprises dwelling insurance & ground rent, fees and subscriptions, vehicle tax and insurance, bus & coach fares, other travel costs, foreign holidays and UK holidays.

Source: National Statistics

# 10 A breakdown of the differences between CPI and RPI

Difference between annual rates CPI - RPI		Breakdown of differences (unrounded figures) <sup>1</sup>							
		housing components excluded from CPI				other differences in coverage of goods and services		other differences including weights <sup>3</sup>	
rounded figures		unrounded figures	total	mortgage interest payments	other housing components		formula effect <sup>2</sup>		
D7G2		D7G3	D7G4	D7G5	D7FU	D7FV	D7FW	D7FX	
2003 Jan	-1.6	-1.61	-1.41	-0.19	-1.22	0.24	-0.42	-0.01	
Feb	-1.6	-1.60	-1.41	-0.20	-1.21	0.24	-0.43	-	
Mar	-1.6	-1.59	-1.28	-0.11	-1.17	0.18	-0.43	-0.07	
Apr	-1.7	-1.67	-1.44	-0.11	-1.32	0.12	-0.44	0.08	
May	-1.7	-1.73	-1.39	-0.12	-1.26	0.05	-0.44	0.05	
Jun	-1.8	-1.82	-1.32	-0.12	-1.20	-0.06	-0.46	0.01	
Jul	-1.8	-1.73	-1.24	-0.12	-1.13	-0.24	-0.43	0.19	
Aug	-1.5	-1.56	-1.08	0.01	-1.09	-0.31	-0.41	0.24	
Sep	-1.4	-1.35	-1.06	0.01	-1.07	0.01	-0.44	0.14	
Oct	-1.2	-1.29	-0.99	0.01	-0.99	0.04	-0.44	0.10	
Nov	-1.2	-1.17	-0.99	-0.02	-0.97	0.19	-0.43	0.07	
Dec	-1.5	-1.51	-1.11	-0.20	-0.91	-0.22	-0.42	0.23	
2004 Jan	-1.2	-1.19	-1.07	-0.21	-0.86	0.02	-0.42	0.28	
Feb	-1.2	-1.23	-1.10	-0.21	-0.89	0.05	-0.43	0.26	
Mar	-1.5	-1.47	-1.47	-0.48	-0.99	0.07	-0.41	0.34	
Apr	-1.4	-1.36	-1.32	-0.50	-0.82	0.08	-0.43	0.30	
May	-1.3	-1.30	-1.36	-0.50	-0.86	0.13	-0.44	0.38	
Jun	-1.4	-1.46	-1.59	-0.69	-0.90	0.14	-0.43	0.42	
Jul	-1.6	-1.66	-1.82	-0.88	-0.94	0.15	-0.42	0.43	
Aug	-1.9	-1.89	-1.96	-1.03	-0.93	0.18	-0.47	0.36	
Sep	-2.0	-1.97	-2.13	-1.18	-0.95	0.20	-0.45	0.42	
Oct	-2.1	-2.07	-2.17	-1.19	-0.99	0.22	-0.46	0.34	
Nov	-1.9	-1.98	-2.11	-1.19	-0.92	0.24	-0.47	0.36	
Dec	-1.8	-1.84	-1.91	-1.00	-0.91	0.24	-0.49	0.32	
2005 Jan	-1.6	-1.55	-1.94	-1.03	-0.92	0.23	-0.48	0.65	
Feb	-1.5	-1.50	-1.92	-1.03	-0.89	0.23	-0.51	0.69	
Mar	-1.3	-1.32	-1.64	-0.86	-0.79	0.22	-0.53	0.62	
Apr	-1.3	-1.22	-1.54	-0.86	-0.68	0.25	-0.52	0.59	
May	-1.0	-1.07	-1.43	-0.85	-0.58	0.27	-0.50	0.60	
Jun	-0.9	-0.87	-1.18	-0.67	-0.51	0.29	-0.52	0.54	
Jul	-0.6	-0.57	-0.89	-0.48	-0.40	0.31	-0.53	0.55	
Aug	-0.4	-0.37	-0.84	-0.48	-0.36	0.33	-0.49	0.64	
Sep	-0.2	-0.20	-0.43	-0.17	-0.27	0.30	-0.52	0.45	
Oct	-0.2	-0.17	-0.37	-0.17	-0.20	0.30	-0.52	0.42	
Nov	-0.3	-0.29	-0.36	-0.16	-0.21	0.27	-0.52	0.32	
Dec	-0.3	-0.30	-0.35	-0.16	-0.19	0.28	-0.51	0.29	
2006 Jan	-0.5	-0.45	-0.29	-0.15	-0.14	0.30	-0.48	0.02	
Feb	-0.4	-0.39	-0.32	-0.15	-0.17	0.30	-0.51	0.14	
Mar	-0.6	-0.51	-0.36	-0.16	-0.20	0.32	-0.55	0.08	
Apr	-0.6	-0.52	-0.33	-0.14	-0.19	0.32	-0.51	-0.01	
May	-0.8	-0.72	-0.32	-0.11	-0.20	0.32	-0.54	-0.19	
Jun	-0.8	-0.75	-0.26	-0.09	-0.17	0.31	-0.52	-0.27	
Jul	-0.9	-0.86	-0.25	-0.09	-0.16	0.28	-0.54	-0.35	
Aug	-0.9	-0.95	-0.25	-0.08	-0.17	0.24	-0.54	-0.39	
Sep	-1.2	-1.22	-0.71	-0.48	-0.23	0.22	-0.56	-0.17	
Oct	-1.3	-1.23	-0.74	-0.49	-0.25	0.24	-0.55	-0.17	
Nov	-1.2	-1.20	-0.73	-0.48	-0.24	0.24	-0.55	-0.16	
Dec	-1.4	-1.46	-0.91	-0.68	-0.24	0.23	-0.56	-0.22	
2007 Jan	-1.5	-1.53	-1.01	-0.72	-0.29	0.23	-0.59	-0.16	
Feb	-1.8	-1.78	-1.21	-0.91	-0.30	0.19	-0.55	-0.21	
Mar	-1.7	-1.75	-1.21	-0.90	-0.31	0.26	-0.57	-0.24	
Apr	-1.7	-1.77	-1.21	-0.91	-0.30	0.21	-0.60	-0.17	
May	-1.8	-1.79	-1.28	-0.94	-0.33	0.19	-0.59	-0.11	
Jun	-2.0	-2.04	-1.49	-1.13	-0.36	0.21	-0.64	-0.12	
Jul	-1.9	-2.00	-1.65	-1.17	-0.47	0.23	-0.54	-0.05	
Aug	-2.3	-2.29	-1.87	-1.38	-0.49	0.24	-0.57	-0.10	
Sep	-2.1	-2.21	-1.62	-1.15	-0.46	0.28	-0.60	-0.27	
Oct	-2.1	-2.15	-1.54	-1.12	-0.41	0.28	-0.60	-0.30	
Nov	-2.2	-2.20	-1.52	-1.12	-0.40	0.29	-0.59	-0.38	
Dec	-1.9	-1.95	-1.30	-0.91	-0.39	0.31	-0.55	-0.41	
2008 Jan	-1.9	-1.87	-1.07	-0.67	-0.39	0.36	-0.59	-0.58	

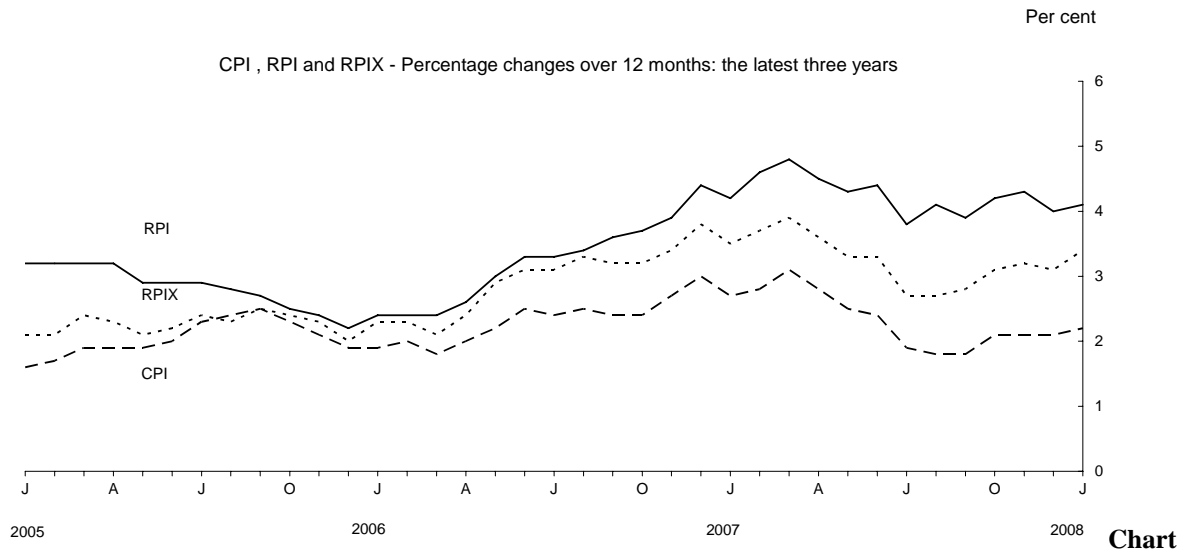
1 The differences due to housing, coverage and formula effect are all calculated independently and are not additive.

Source: National Statistics

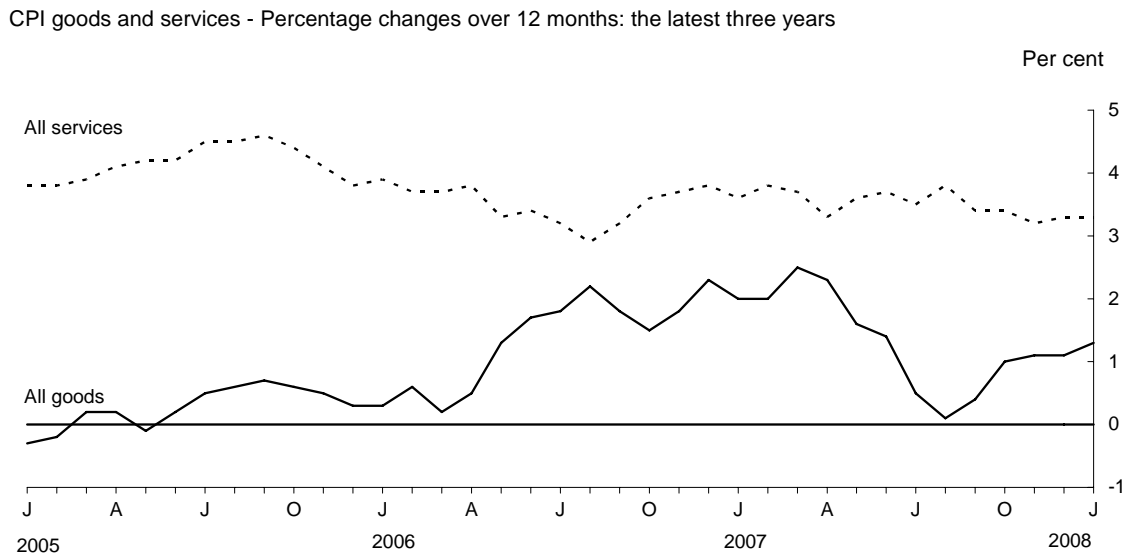
2 Difference due to use of different formulae to aggregate prices at the most basic level.

3 This difference is derived as a residual.

**Chart for Table 1 – January 2008**  
**CPI RPI and Other Related Indices**



**Chart for Table 6 – January 2008**  
**CPI Goods and Services**



**Chart for Table 9 – January 2008**  
**RPI Goods and Services**

