

15 January 2008

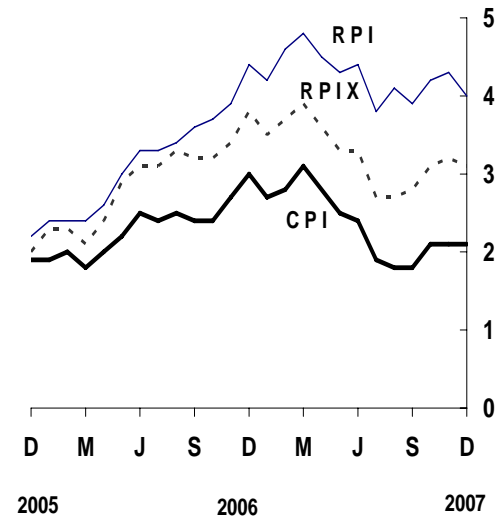
Coverage
United Kingdom
Theme
The Economy

Consumer price indices December 2007

In the year to December, the consumer prices index (CPI) rose by 2.1 per cent, unchanged from November.

In the year to December, the all items retail prices index (RPI) rose by 4.0 per cent, down from 4.3 per cent in November.

Over the same period, the all items RPI excluding mortgage interest payments index (RPIX) rose by 3.1 per cent, down from 3.2 per cent in November.



Issued by
National Statistics
1 Drummond Gate
London SW1V 2QQ

Telephone
Press Office 020 7533 5725
Public Enquiries 0845 601 3034
CPI/RPI Enquiries 01633 456900
CPI/RPI recorded
message 01633 456961
E-mail cpi@ons.gov.uk

Statistician
Rob Pike 01633 455375
rob.pike@ons.gov.uk

Internet
www.statistics.gov.uk

Next publication date
12 February 2008

	Consumer prices index (CPI)		All items retail prices index (RPI)		All items RPI excluding mortgage interest payments (RPIX)	
	Index (2005 =100)	Per cent change over 12 months	Index (Jan 1987 =100)	Per cent change over 12 months	Index (Jan 1987 =100)	Per cent change over 12 months
2007 July	104.4	1.9	206.1	3.8	199.4	2.7
Aug	104.7	1.8	207.3	4.1	200.1	2.7
Sept	104.8	1.8	208.0	3.9	200.8	2.8
Oct	105.3	2.1	208.9	4.2	201.6	3.1
Nov	105.6	2.1	209.7	4.3	202.4	3.2
Dec	106.2	2.1	210.9	4.0	203.5	3.1

Main contributions to the change in the 12-month rate¹

CPI

There was a large downward contribution to change in the CPI annual rate from housing and household services with both gas and electricity bills increasing by less than they did in the same period last year. Last year's price increases for gas and electricity were due to the continued phasing in of increased tariffs.

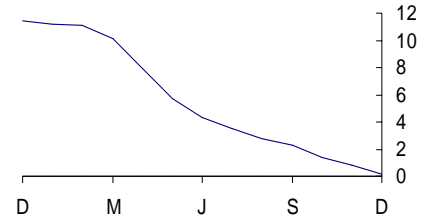
There was a further large downward contribution from furniture, household equipment and maintenance, due to furniture and furnishings. The price of kitchen units fell, reflecting discounting on some lines, whereas prices rose last year. Also, prices increased by less than last year across a range of other furniture, particularly for leather settees.

The largest upward contribution to the change in the CPI annual rate was from food and non-alcoholic beverages. The largest contribution came from vegetables where prices increased this year compared with a fall in prices last year. The upward effect particularly came from cauliflowers, tomatoes, onions and cabbages. Smaller upward contributions came from bread and cereals, mainly due to changes in the price of bread, biscuits and pizzas, and sugar, jam, confectionery and chocolate.

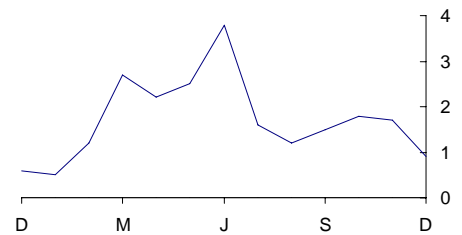
There was also a large upward contribution from clothing and footwear. This was mainly due to greater discounting of clothing last year than this year across a range of men's and women's clothing. The largest effect came from women's dresses.

There was a small upward contribution from miscellaneous goods and services with prices rising this year and falling last year. The largest effect came from financial services where there was an increase in mortgage arrangement fees.

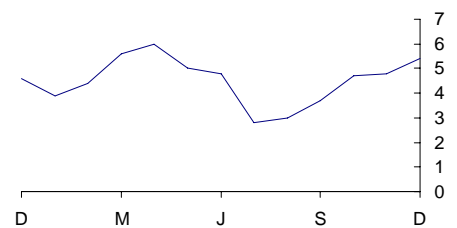
Housing and household services
CPI percentage changes over 12 months



Furniture and household goods
CPI percentage changes over 12 months



Food and non-alcoholic beverages
CPI percentage changes over 12 months



¹ The CPI and RPI use different classification systems. Background Note 12 shows how, for each of the two indices, the main categories contributing to changes in the 12-month rate relate to each other

RPI

The largest downward contribution to the change in the RPI annual rate was from housing. The effect came mainly from mortgage interest payments where there was a smaller increase this year than last year. There was also a small downward effect from house depreciation. These were partly offset by an upward contribution from building insurance.

A further large downward contribution came from household goods. This was entirely due to the price of furniture increasing by less than a year ago. There was a partially offsetting effect from furnishing prices which rose by more than they did last year.

There was also a large downward contribution from fuel and light. As with CPI the effect came mainly from gas and electricity prices which were little changed this year compared with larger increases last year, from the phasing in of increased tariffs.

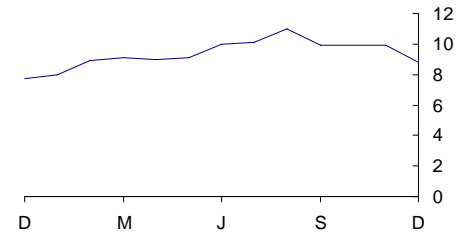
The largest upward contribution to change in the RPI annual rate came from food, where prices rose by more than last year. As with the CPI the largest increase was for fresh vegetables.

There was also a large upward contribution from fares and other travel, reflecting air fares which increased more than last year. There were similar contributions from domestic, European and long-haul flights.

There was a small upward contribution from clothing and footwear. As with the CPI, clothing and footwear prices decreased by less than last year. This effect is seen in men's outerwear, women's outerwear and footwear.

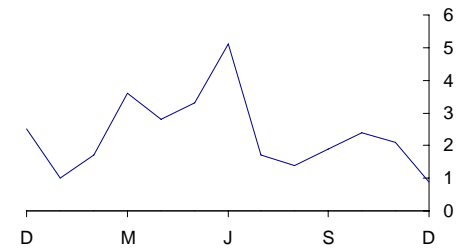
Housing

RPI percentage changes over 12 months



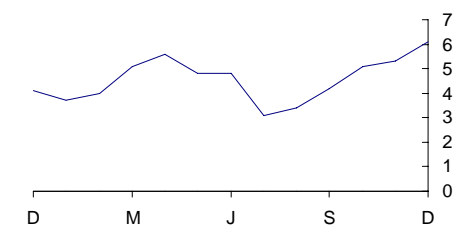
Household goods

RPI percentage changes over 12 months

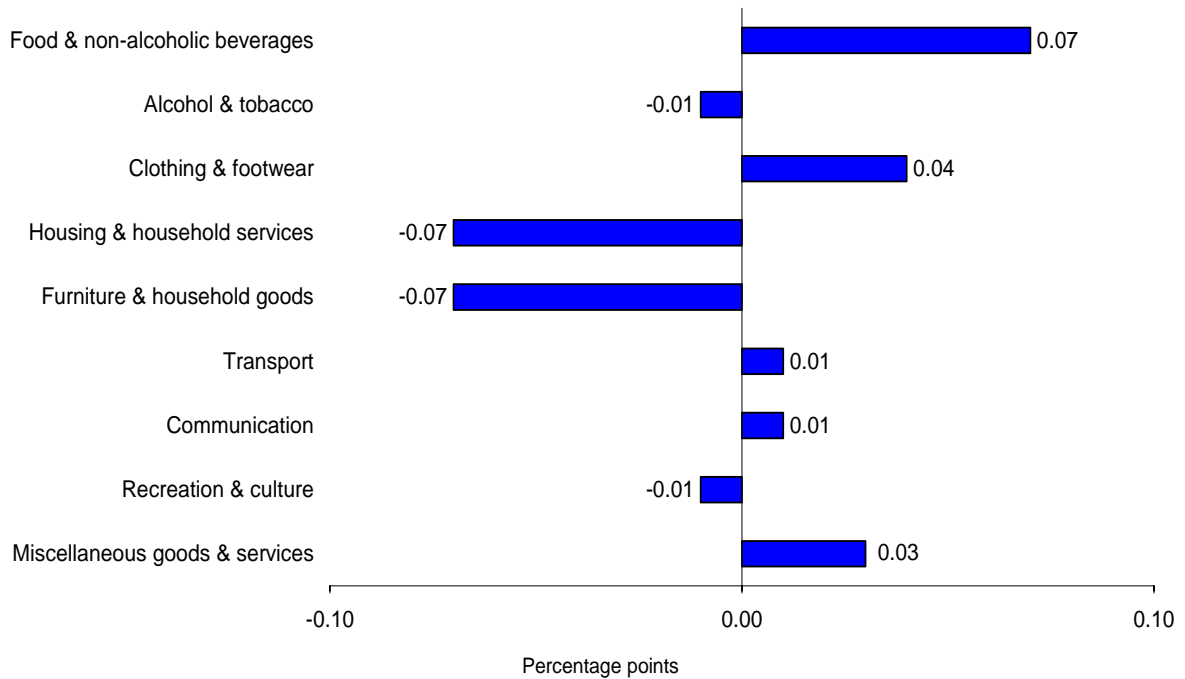


Food

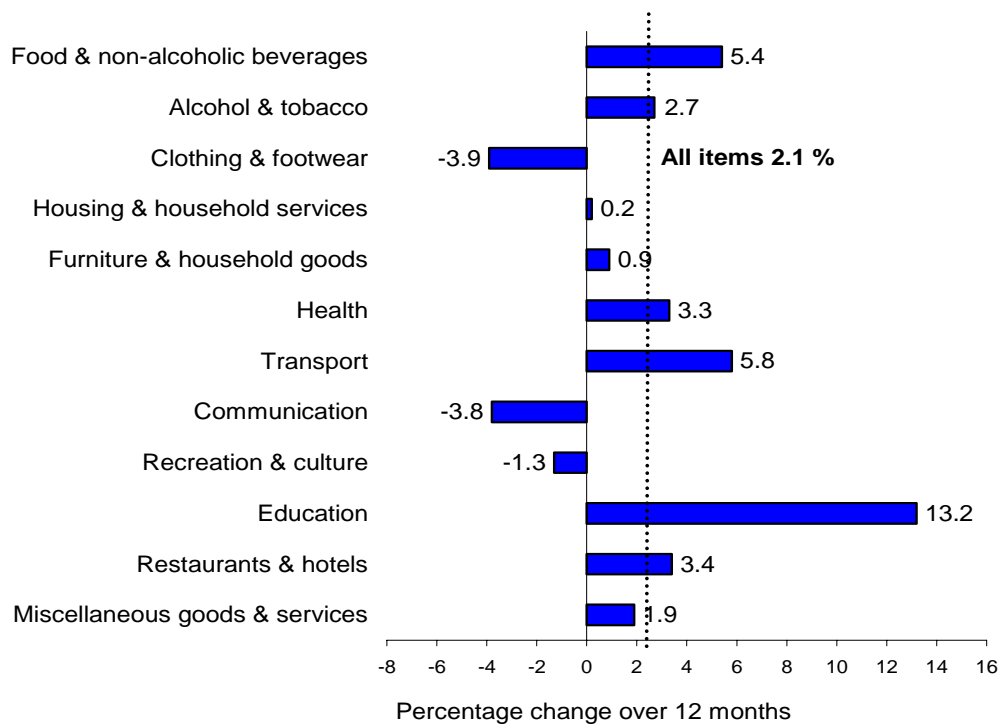
RPI percentage changes over 12 months



CPI main contributions¹ to the change in the all items 12-month rate between November 2007 and December 2007 (unchanged)

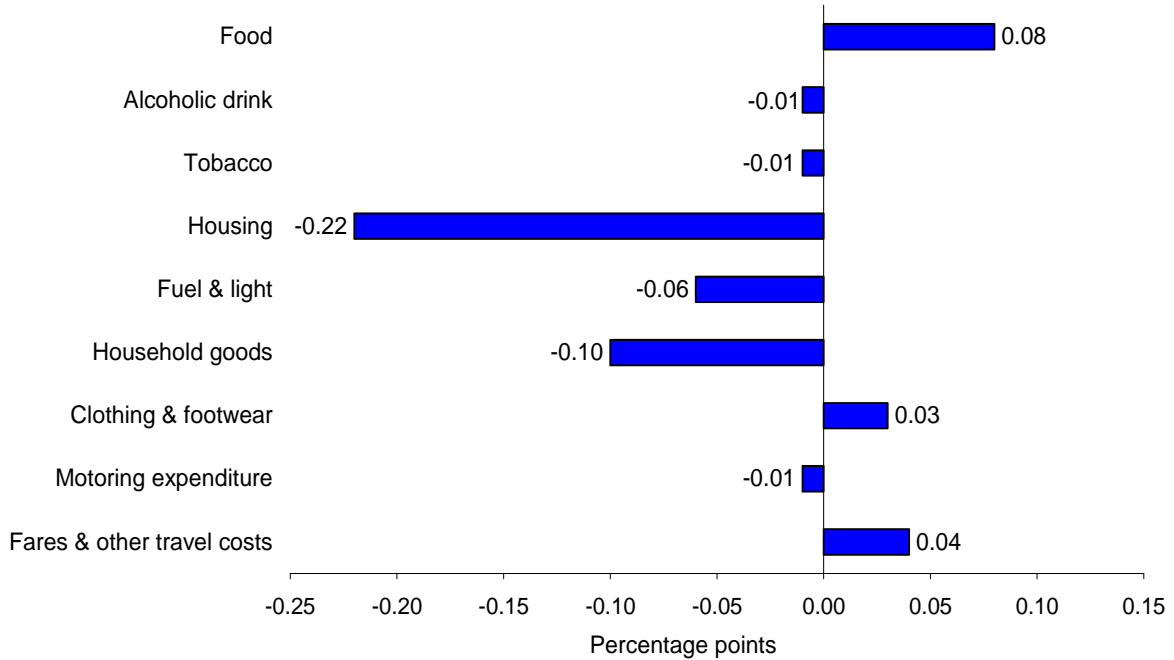


CPI comparison of the 12-month percentage changes

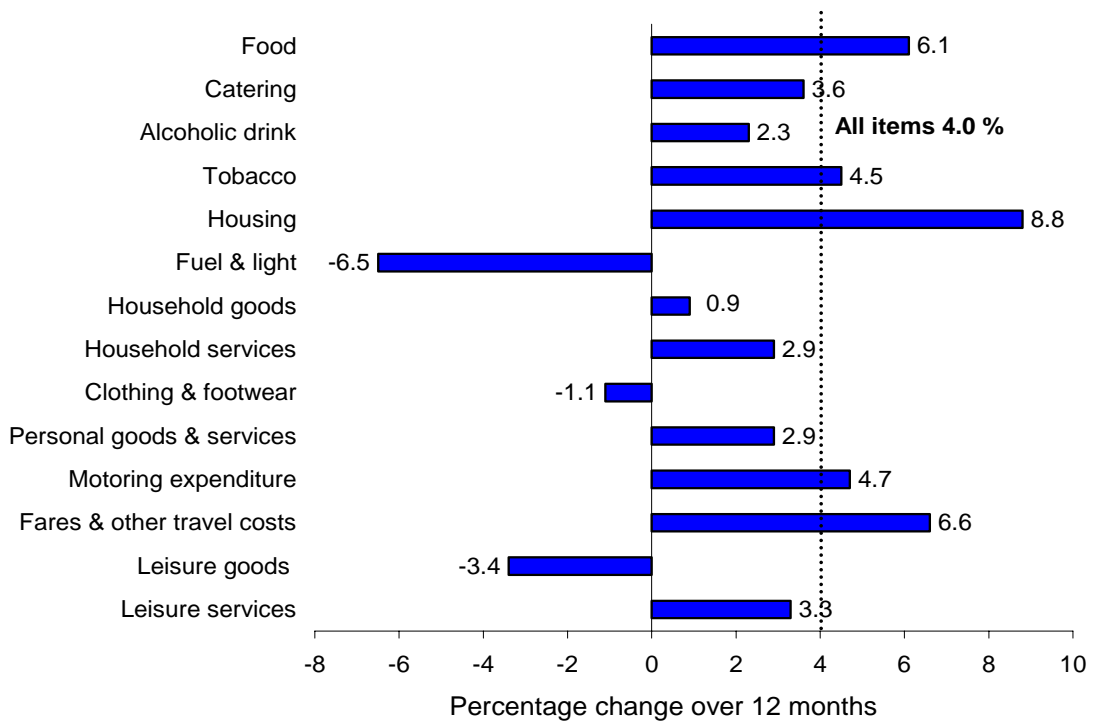


¹ Individual contributions to the change in the 12-month rate may not sum to the total due to rounding

RPI main contributions¹ to the change in the all items 12-month rate between November 2007 and December 2007 (-0.3 percentage points)



RPI comparison of 12-month percentage changes



¹ Individual contributions to the change in the 12-month rate may not sum to the total due to rounding.

BACKGROUND NOTES

New next month

- 1 In line with usual practice, the January 2008 index will include updates to the published CPI weights.

Relevance

- 2 The consumer prices index (CPI) is the main United Kingdom domestic measure of consumer price inflation for macroeconomic purposes. It forms the basis for the Government's inflation target that the Bank of England's Monetary Policy Committee (MPC) is required to achieve.
- 3 Internationally, the CPI is known as the Harmonised Index of Consumer Prices (HICP). HICPs are calculated in each Member State of the European Union, according to rules specified in a series of European Regulations developed by Eurostat in conjunction with the EU Member States. HICPs are used to compare inflation rates across the European Union. Since January 1999 it has also been used by the European Central Bank (ECB) as the measure of price stability across the euro area.
- 4 The retail prices index (RPI) is the most long-standing general purpose measure of inflation in the United Kingdom and is available from June 1947. It is used for a variety of purposes by both government and external users including the indexation of various incomes and prices and the uprating of pensions, benefits and index-linked gilts.

Methodology

- 5 The CPI and the RPI are compiled using the same underlying price data, based on a large and representative selection of around 650 individual goods and services for which price movements are measured in around 150 randomly selected areas throughout the UK. Around 120,000 separate price quotations are used every month to compile the indices. The outlets in which the prices are collected are selected randomly. Expenditure weights are held constant for one year at a time.
- 6 The selection of goods and services that are priced to compile the CPI and RPI is reviewed annually. The contents of the 2007 basket are described in an article published on the National Statistics website at:
<http://www.statistics.gov.uk/cci/article.asp?ID=1746>
The expenditure weights used to compile the indices are also updated each year. Additional details of the updated CPI and RPI weights for 2007 are available from the National Statistics website in an article entitled Consumer Prices Index and Retail Prices Index: Updating Weights for 2007
<http://www.statistics.gov.uk/cci/article.asp?id=1779>
- 7 Rates of change for the CPI are calculated from unrounded index levels, rather than on the published indices, which are rounded to one decimal place. The use of unrounded indices increases the accuracy of the calculation. The unrounded index levels are available on request. By contrast, rates of change for the RPI are calculated from the published rounded indices.

Reliability

- 8 Once the RPI indices are published they are never revised. CPI indices are revisable although past revisions have been minimal with the exception of those arising from re-referencing of the CPI to 2005=100, which took place with the publication of the January 2006 indices.

Comparability

- 9 The CPI's coverage of goods and services was extended in stages in the areas of health, education, childcare and insurance, with effect from the January 2000, 2001, and 2002 indices. In 2000, there was also a change to the population basis for the weights which was broadened from private households to include expenditure by foreign visitors and residents of institutional households. Further details can be found in a series of articles:
http://www.statistics.gov.uk/about/methodology_by_theme/cpi
- 10 The official CPI series starts in 1996 but estimates for earlier periods are available back to 1988. These estimates are broadly consistent with data from 1996 but should be treated with some caution. The following article provides more detail:
<http://www.statistics.gov.uk/cci/article.asp?ID=31&Pos=4&ColRank=1&Rank=1>
- 11 RPI data are available back to 1947 but have been re-referenced on several occasions since then, generally accompanied by changes to the coverage and/or structure of the detailed sub-components. Details of these changes are given in Appendices 1 and 2 of the CPI Technical Manual:
<http://www.statistics.gov.uk/statbase/Product.asp?vlnk=2328&More=N>

Coherence

- 12 The CPI and RPI both measure the average change from month to month in the prices of consumer goods and services purchased in the UK. However, they differ in both coverage and methodology. A detailed description of these differences is given in an article entitled "The New Inflation Target: the Statistical Perspective":
www.statistics.gov.uk/StatBase/Product.asp?vlnk=10913. The differences are summarised below:
- In the CPI, the geometric mean is used to combine the individual prices into elementary indices at the most basic level whereas the RPI uses arithmetic means.
 - The CPI excludes a number of RPI series mainly relating to housing costs (for example, council tax), and in particular to owner occupiers' housing costs (including mortgage interest payments, house depreciation and buildings insurance). In addition, the CPI excludes the annual road fund licence and, from 2006, TV licences which are classified as taxes in the UK National Accounts, and Trades Union subscriptions which by convention are not part of household expenditure.
 - The CPI includes series for university accommodation fees, foreign students' university tuition fees, and unit trust and stockbrokers' charges, none of which are included in the RPI.

- The CPI is categorised according to the international classification system, COICOP (Classification Of Individual CONsumption by Purpose). The way in which this maps to the RPI groupings is shown in the following table:

COICOP Divisions	RPI Groups
01 Food & non-alcoholic beverages	Food
02 Alcohol & tobacco	Alcoholic drink (off sales) Tobacco
03 Clothing & footwear	Clothing & footwear
04 Housing & household services	Housing (exc. Mortgage interest payments, depreciation, council tax & building insurance) Fuel & light
05 Furniture & household goods	Household goods Domestic services
06 Health	Personal goods & services (health-related items)
07 Transport	Motoring expenditure Fares & other travel costs
08 Communication	Household services (exc. domestic services & fees and subscriptions)
09 Recreation & culture	Leisure goods Leisure services
10 Education	Fees & subscriptions (education-related items)
11 Restaurants & hotels	Catering Alcoholic drink (on sales)
12 Miscellaneous goods & services	Personal goods & services (non health-related items) Fees & subscriptions (non education-related items)

- The index for the purchase of new cars in the CPI is quality adjusted and based on actual published prices for new cars. New car prices in the RPI are imputed from movements in second hand car prices.
- The CPI weights are based on expenditure by all private households, foreign visitors to the UK and residents of institutional households. In the RPI, weights are based on expenditure by private households only, excluding the highest income households and pensioner households mainly dependent on state benefits.
- In the construction of the CPI weights, amounts paid out in insurance claims are distributed among the COICOP headings according to the nature of the claims' expenditure, with the residual (the service charge) being allocated to the relevant insurance heading. For the RPI weights, total expenditure (that is, gross of claims paid out) is assigned to the relevant insurance heading.

- 13 A breakdown of the difference between the CPI and RPI annual rates of inflation is shown in Table 10 of the CPI First Release.

Accessibility

- 14 This release includes the December 2007 data, collected on 11 December. Future publication dates are 12 February, 18 March, 15 April, 13 May, 17 June and 15 July. The European Commission (Eurostat) will release figures for the harmonised index of consumer prices (HICP) for the month of December 2007 for EU member states excluding the UK, together with an EU average, on 15 January 2008. Further information on HICP for the European Union, Eurozone and other EU Member States is available from Eurostat's HICP web page: http://epp.eurostat.ec.europa.eu/pls/portal/url/page/PGP_DS_HICP

Further information

- 15 A more detailed quality report for this First Release is available at: <http://www.statistics.gov.uk/CCI/article.asp?ID=1585>
- 16 A full description of how the CPI and RPI are compiled is given in the Consumer Price Indices Technical Manual 2007 edition: <http://www.statistics.gov.uk/statbase/Product.asp?vlnk=2328>

General

- 17 Details of the policy governing the release of new data are available from the press office. Also available is a list of the names of those given pre-publication access to contents of this release.
- 18 In line with Consumer Price Indices Pre-Release arrangements, an advance estimate of the CPI was provided to the Governor of the Bank of England 3½ working days ahead of publication. The Governor shared this information with the MPC and officials present at the MPC policy meeting, on Thursday 10 January.
- 19 Complete runs of series in this release are available to download free of charge at: <http://www.statistics.gov.uk/timeseries> . Alternatively, for low-cost tailored data call Online Services on 020 7533 5675 or email: tailored@statistics.gov.uk
- 20 **National Statistics** are produced to high professional standards set out in the National Statistics Code of Practice. They undergo regular quality assurance reviews to ensure that they meet customer needs. They are produced free from any political interference. © Crown Copyright 2008

1 CPI, RPI and other selected indices: the latest three years

	Consumer prices index (CPI) ¹		Consumer prices index excluding indirect taxes (CPIY) ³		Consumer prices index at constant tax rates (CPI-CT)		All items retail prices index (RPI)		All items RPI excluding			
	Index (2005=100)	Percentage change over 12 months	Index (2005=100)	Percentage change over 12 months	Index (2005=100)	Percentage change over 12 months	Index (Jan 13, 1987=100)	Percentage change over 12 months	mortgage interest payments (RPIX)		mortgage interest payments and indirect taxes (RPIY) ²	
		Index (Jan 13, 1987=100)		Percentage change over 12 months		Index (Jan 13, 1987=100)		Percentage change over 12 months	Index (Jan 13, 1987=100)	Percentage change over 12 months		
	D7BT	D7G7	EL2Q	EL2S	EAC7	EAD6	CHAW	CZBH	CHMK	CDKQ	CBZW	CBZX
2004 Dec	99.1	1.7	99.1	1.7	99.2	1.6	189.9	3.5	186.4	2.5	177.9	2.5
2005 Jan	98.6	1.6	98.5	1.7	98.6	1.5	188.9	3.2	185.2	2.1	176.7	2.0
Feb	98.8	1.7	98.8	1.7	98.9	1.6	189.6	3.2	185.9	2.1	177.4	2.0
Mar	99.3	1.9	99.3	2.0	99.3	1.8	190.5	3.2	186.8	2.4	178.3	2.3
Apr	99.7	1.9	99.6	2.0	99.6	1.9	191.6	3.2	187.8	2.3	179.0	2.3
May	100.0	1.9	100.0	2.0	100.0	1.8	192.0	2.9	188.2	2.1	179.4	2.2
Jun	100.0	2.0	100.0	2.2	100.0	1.9	192.2	2.9	188.3	2.2	179.5	2.2
Jul	100.1	2.3	100.1	2.5	100.1	2.3	192.2	2.9	188.3	2.4	179.5	2.5
Aug	100.4	2.4	100.5	2.6	100.4	2.3	192.6	2.8	188.6	2.3	179.8	2.3
Sep	100.6	2.5	100.6	2.6	100.6	2.4	193.1	2.7	189.3	2.5	180.5	2.5
Oct	100.7	2.3	100.8	2.5	100.7	2.3	193.3	2.5	189.5	2.4	180.7	2.3
Nov	100.7	2.1	100.8	2.3	100.7	2.1	193.6	2.4	189.7	2.3	180.9	2.3
Dec	101.0	1.9	101.1	2.1	101.0	1.8	194.1	2.2	190.2	2.0	181.5	2.0
2006 Jan	100.5	1.9	100.6	2.1	100.5	1.9	193.4	2.4	189.4	2.3	180.7	2.3
Feb	100.9	2.0	100.9	2.1	100.8	2.0	194.2	2.4	190.1	2.3	181.4	2.3
Mar	101.1	1.8	101.1	1.9	101.1	1.7	195.0	2.4	190.8	2.1	182.2	2.2
Apr	101.7	2.0	101.7	2.1	101.6	2.0	196.5	2.6	192.3	2.4	183.2	2.3
May	102.2	2.2	102.3	2.3	102.1	2.2	197.7	3.0	193.6	2.9	184.5	2.8
Jun	102.5	2.5	102.6	2.6	102.4	2.4	198.5	3.3	194.2	3.1	185.2	3.2
Jul	102.5	2.4	102.6	2.4	102.4	2.3	198.5	3.3	194.2	3.1	185.2	3.2
Aug	102.9	2.5	103.0	2.6	102.8	2.4	199.2	3.4	194.9	3.3	186.0	3.4
Sep	103.0	2.4	103.2	2.6	102.9	2.3	200.1	3.6	195.3	3.2	186.4	3.3
Oct	103.2	2.4	103.5	2.7	103.1	2.3	200.4	3.7	195.5	3.2	186.7	3.3
Nov	103.4	2.7	103.8	3.0	103.4	2.6	201.1	3.9	196.2	3.4	187.5	3.6
Dec	104.0	3.0	104.3	3.2	103.9	2.9	202.7	4.4	197.4	3.8	188.6	3.9
2007 Jan	103.2	2.7	103.5	2.9	103.1	2.6	201.6	4.2	196.1	3.5	187.3	3.7
Feb	103.7	2.8	103.9	2.9	103.5	2.6	203.1	4.6	197.1	3.7	188.4	3.9
Mar	104.2	3.1	104.3	3.1	103.9	2.9	204.4	4.8	198.3	3.9	189.5	4.0
Apr	104.5	2.8	104.6	2.9	104.2	2.6	205.4	4.5	199.3	3.6	190.0	3.7
May	104.8	2.5	105.0	2.6	104.5	2.3	206.2	4.3	200.0	3.3	190.7	3.4
Jun	105.0	2.4	105.2	2.5	104.7	2.2	207.3	4.4	200.7	3.3	191.4	3.3
Jul	104.4	1.9	104.6	2.0	104.1	1.7	206.1	3.8	199.4	2.7	190.1	2.6
Aug	104.7	1.8	105.0	1.9	104.5	1.6	207.3	4.1	200.1	2.7	190.9	2.6
Sep	104.8	1.8	105.0	1.7	104.5	1.6	208.0	3.9	200.8	2.8	191.6	2.8
Oct	105.3	2.1	105.5	1.9	104.9	1.8	208.9	4.2	201.6	3.1	192.3	3.0
Nov	105.6	2.1	105.8	1.9	105.2	1.8	209.7	4.3	202.4	3.2	193.2	3.0
Dec	106.2	2.1	106.4	2.0	105.8	1.9	210.9	4.0	203.5	3.1	194.4	3.1

1 Inflation rates prior to 1997 and index levels prior to 1996 are estimated. Further details are given in *Economic Trends No. 541 December 1998*. These details are also available on the National Statistics website: www.statistics.gov.uk/cci/article.asp?ID=31

2 The taxes excluded are council tax, VAT, duties, vehicle excise duty, insurance tax and air passenger duty.

3 The taxes excluded are VAT, duties, insurance premium tax, air passenger duty, stamp duty on share transactions.

Source: National Statistics

2 CPI: Detailed figures for 11 December 2007

	Percentage change over				Percentage change over		
	Index (2005=100)	1 mth	12 mths		Index (2005=100)	1 mth	12 mths
CPI (overall index)	106.2	0.6	2.1				
01 Food and non-alcoholic beverages	111.1	0.9	5.4	06.2 Out-patient services	109.7	0.2	3.4
02 Alcoholic beverages and tobacco	105.7	-0.6	2.7	06.2.1/3 Medical services & paramedical services	107.1	0.4	2.8
03 Clothing and footwear	92.2	-0.8	-3.9	06.2.2 Dental services	112.6	-0.1	4.3
04 Housing, water, electricity, gas and other fuels	114.7	0.1	0.2	06.3 Hospital services	115.1	0.1	5.5
05 Furniture, household equipment and maintenance	104.2	2.5	0.9	07.1 Purchase of vehicles	98.6	-0.4	-0.8
06 Health	107.6	0.3	3.3	07.1.1A New cars	102.8	-	1.4
07 Transport	108.7	1.7	5.8	07.1.1B Second-hand cars	92.0	-1.0	-3.6
08 Communication	96.2	-0.1	-3.8	07.1.2/3 Motorcycles and bicycles	97.9	-0.2	-1.9
09 Recreation and culture	98.0	0.4	-1.3	07.2 Operation of personal transport equipment	115.1	1.1	10.1
10 Education	133.2	-	13.2	07.2.1 Spare parts and accessories	103.7	-0.1	0.4
11 Restaurants and hotels	108.3	0.2	3.4	07.2.2 Fuels and lubricants	118.3	1.9	16.5
12 Miscellaneous goods and services	106.8	0.2	1.9	07.2.3 Maintenance and repairs	113.2	0.3	3.9
All goods	104.1	0.5	1.1	07.2.4 Other services	111.0	-	5.4
All services	108.9	0.6	3.3	07.3 Transport services	110.7	6.3	5.9
01.1 Food	111.5	1.0	5.9	07.3.1 Passenger transport by railway	109.6	-	5.3
01.1.1 Bread and cereals	111.8	2.0	7.5	07.3.2 Passenger transport by road	108.8	0.3	4.8
01.1.2 Meat	105.9	0.8	1.5	07.3.3 Passenger transport by air	106.4	26.6	2.6
01.1.3 Fish	118.0	-1.4	2.7	07.3.4 Passenger transport by sea and inland waterway	113.2	1.5	9.3
01.1.4 Milk, cheese and eggs	118.9	1.3	15.0	08.1 Postal services	121.5	-	6.3
01.1.5 Oils and fats	124.7	0.6	15.1	08.2/3 Telephone and telefax equipment and services	95.1	-0.1	-4.2
01.1.6 Fruit	107.6	-1.5	0.4	09.1 Audio-visual equipment and related products	75.7	0.4	-13.9
01.1.7 Vegetables including potatoes and tubers	113.7	1.9	6.8	09.1.1 Reception and reproduction of sound and pictures	72.2	-0.4	-14.4
01.1.8 Sugar, jam, syrups, chocolate and confectionery	110.8	1.5	6.0	09.1.2 Photographic, cinematographic and optical equipment	48.9	-3.9	-31.8
01.1.9 Food products (nec)	101.7	0.2	1.7	09.1.3 Data processing equipment	62.7	-0.3	-24.6
01.2 Non-alcoholic beverages	108.2	-	1.9	09.1.4 Recording media	97.7	2.5	-1.7
01.2.1 Coffee, tea and cocoa	107.8	-1.4	-2.1	09.1.5 Repair of audio-visual equipment & related products	109.1	0.3	4.0
01.2.2 Mineral waters, soft drinks and juices	108.2	0.4	3.1	09.2 Oth. major durables for recreation & culture	101.7	-	0.9
02.1 Alcoholic beverages	99.2	-1.2	0.2	09.2.1/2 Major durables for in/outdoor recreation	101.7	-	0.9
02.1.1 Spirits	97.9	-1.6	1.1	09.3 Other recreational items, gardens and pets	98.2	0.6	0.7
02.1.2 Wine	100.8	-1.0	0.9	09.3.1 Games, toys and hobbies	94.0	0.8	-0.5
02.1.3 Beer	97.0	-1.3	-2.5	09.3.2 Equipment for sport and open-air recreation	98.3	-0.8	0.3
02.2 Tobacco	110.6	-0.1	4.4	09.3.3 Gardens, plants and flowers	101.7	1.3	1.2
03.1 Clothing	92.0	-0.7	-4.3	09.3.4/5 Pets, related products and services	109.2	0.6	4.4
03.1.2 Garments	91.3	-0.8	-4.6	09.4 Recreational and cultural services	110.8	0.1	3.6
03.1.3 Other clothing and clothing accessories	100.3	-	-2.0	09.4.1 Recreational and sporting services	113.3	0.1	5.6
03.1.4 Cleaning, repair and hire of clothing	108.5	-0.9	2.3	09.4.2 Cultural services	109.7	0.1	2.7
03.2 Footwear including repairs	93.6	-1.0	-1.1	09.5 Books, newspapers and stationery	106.8	0.4	1.3
04.1 Actual rentals for housing	107.6	-	3.1	09.5.1 Books	106.3	0.1	0.5
04.3 Regular maintenance and repair of the dwelling	108.1	0.5	4.4	09.5.2 Newspapers and periodicals	112.8	0.7	3.7
04.3.1 Materials for maintenance and repair	106.0	0.8	4.3	09.5.3/4 Misc. printed matter, stationery, drawing materials	98.9	0.2	-1.7
04.3.2 Services for maintenance and repair	111.1	0.2	4.7	09.6 Package holidays	101.1	0.3	1.4
04.4 Water supply and misc. services for the dwelling	115.3	-	6.5	10.0 Education	133.2	-	13.2
04.4.1 Water supply	115.7	-	6.2	11.1 Catering services	108.2	0.3	3.4
04.4.3 Sewerage collection	114.9	-	6.9	11.1.1 Restaurants & cafes	108.1	0.4	3.4
04.5 Electricity, gas and other fuels	130.0	0.1	-7.0	11.1.2 Canteens	109.1	-0.1	4.0
04.5.1 Electricity	128.5	-	-4.5	11.2 Accommodation services	108.9	-0.2	3.3
04.5.2 Gas	133.2	0.1	-12.9	12.1 Personal care	105.4	-0.2	3.1
04.5.3 Liquid fuels	138.1	0.5	32.1	12.1.1 Hairdressing and personal grooming establishments	109.1	0.1	3.7
04.5.4 Solid fuels	122.4	2.0	7.6	12.1.2/3 Appliances and products for personal care	104.0	-0.3	2.9
05.1 Furniture, furnishings and carpets	108.0	5.4	-0.2	12.3 Personal effects (nec)	106.7	-	2.4
05.1.1 Furniture and furnishings	108.9	5.3	-0.8	12.3.1 Jewellery, clocks and watches	109.6	-	3.0
05.1.2 Carpets and other floor coverings	104.7	5.7	1.8	12.3.2 Other personal effects	101.7	-0.1	1.1
05.2 Household textiles	93.4	0.7	-2.5	12.4 Social protection	113.7	0.2	5.3
05.3 Household appliances, fitting and repairs	99.1	0.5	4.3	12.5 Insurance	107.5	0.6	4.4
05.3.1/2 Major appliances and small electric goods	98.5	0.5	4.6	12.5.2 House contents insurance	104.9	1.1	2.4
05.3.3 Repair of household appliances	104.1	0.1	2.3	12.5.3 Health insurance	117.5	-	6.8
05.4 Glassware, tableware and household utensils	101.3	0.8	1.4	12.5.4 Transport insurance	104.7	0.6	4.2
05.5 Tools and equipment for house and garden	101.7	0.7	-0.2	12.6 Financial services (nec)	102.4	0.6	-2.5
05.6 Goods and services for routine maintenance	108.5	0.1	2.8	12.6.2 Other financial services (nec)	102.4	0.6	-2.5
05.6.1 Non-durable household goods	105.3	0.2	0.7	12.7 Other services (nec)	112.6	0.2	3.7
05.6.2 Domestic services and household services	111.2	-	4.5				
06.1 Medical products, appliances and equipment	101.1	0.5	1.2				
06.1.1 Pharmaceutical products	101.8	0.7	0.5				
06.1.2/3 Other medical and therapeutic equipment	100.7	0.3	2.0				

Key: - zero or negligible .. not available (nec) not elsewhere covered

Source: National Statistics

3 CPI: Detailed figures by divisions, groups and classes

	Weights	Index (2005=100)						Percentage change over 12 months					
		2007	2007 Jul	2007 Aug	2007 Sep	2007 Oct	2007 Nov	2007 Dec	2007 Jul	2007 Aug	2007 Sep	2007 Oct	2007 Nov
CPI (overall index)	1 000	104.4	104.7	104.8	105.3	105.6	106.2	1.9	1.8	1.8	2.1	2.1	2.1
01 Food and non-alcoholic beverages	103	105.5	106.1	107.4	109.1	110.1	111.1	2.8	3.0	3.7	4.7	4.8	5.4
02 Alcoholic beverages and tobacco	43	106.9	107.0	107.1	106.8	106.4	105.7	3.4	3.1	3.2	2.7	2.9	2.7
03 Clothing and footwear	62	89.8	91.1	92.5	92.5	92.9	92.2	-2.6	-3.5	-4.0	-4.3	-4.4	-3.9
04 Housing, water, electricity, gas and other fuels	115	114.3	114.0	114.0	114.3	114.6	114.7	3.5	2.8	2.3	1.4	0.8	0.2
05 Furniture, household equipment and maintenance	68	99.7	100.3	102.1	100.8	101.6	104.2	1.6	1.2	1.5	1.8	1.7	0.9
06 Health	24	106.6	106.8	107.1	107.5	107.3	107.6	3.4	3.3	3.4	3.2	3.1	3.3
07 Transport	152	108.0	108.6	105.7	106.6	107.0	108.7	2.4	2.6	2.7	5.1	5.8	5.8
08 Communication	24	94.8	97.2	96.6	96.2	96.3	96.2	-5.0	-2.0	-3.0	-4.2	-4.0	-3.8
09 Recreation and culture	153	97.0	97.5	97.6	97.7	97.6	98.0	-1.4	-0.9	-1.0	-0.9	-1.1	-1.3
10 Education	18	117.8	117.8	122.9	133.2	133.2	133.2	14.0	14.0	13.9	13.2	13.2	13.2
11 Restaurants and hotels	138	107.2	107.4	107.6	107.9	108.0	108.3	3.6	3.6	3.7	3.5	3.4	3.4
12 Miscellaneous goods and services	100	106.1	105.6	105.8	106.4	106.6	106.8	2.0	1.1	1.0	1.3	1.6	1.9
All goods	547	101.6	101.9	102.5	102.8	103.5	104.1	0.5	0.1	0.4	1.0	1.1	1.1
All services	453	107.8	108.3	107.7	108.4	108.2	108.9	3.5	3.8	3.4	3.4	3.2	3.3
01.1 Food	90	105.0	105.7	107.2	109.2	110.4	111.5	2.5	2.8	3.8	5.1	5.1	5.9
01.1.1 Bread and cereals	15	104.6	104.7	106.1	107.2	109.6	111.8	3.0	2.7	3.6	4.6	6.1	7.5
01.1.2 Meat	21	102.6	102.9	102.0	104.8	105.0	105.9	-0.2	-0.3	-0.7	1.3	1.3	1.5
01.1.3 Fish	4	115.8	116.7	117.2	119.6	119.7	118.0	6.3	5.2	5.2	5.2	6.0	2.7
01.1.4 Milk, cheese and eggs	12	105.5	106.2	112.9	114.4	117.4	118.9	3.2	3.3	10.0	11.3	13.9	15.0
01.1.5 Oils and fats	2	106.0	105.1	118.1	119.7	123.9	124.7	-1.3	-3.0	10.4	11.2	14.3	15.1
01.1.6 Fruit	9	96.5	98.6	102.3	108.5	109.3	107.6	-1.0	-1.2	-0.3	4.0	1.3	0.4
01.1.7 Vegetables including potatoes and tubers	14	110.1	111.3	110.4	111.0	111.6	113.7	7.4	10.4	7.8	7.6	4.2	6.8
01.1.8 Sugar, jam, syrups, chocolate and confectionery	11	106.8	107.7	107.9	108.1	109.2	110.8	2.8	2.6	3.0	3.4	4.4	6.0
01.1.9 Food products (nec)	2	100.4	100.0	101.1	101.1	101.5	101.7	1.9	0.8	1.9	0.6	1.8	1.7
01.2 Non-alcoholic beverages	13	109.1	109.0	108.9	108.7	108.2	108.2	5.1	4.5	2.9	2.3	2.4	1.9
01.2.1 Coffee, tea and cocoa	3	109.5	108.9	110.0	108.5	109.4	107.8	5.5	0.5	0.1	-1.4	0.9	-2.1
01.2.2 Mineral waters, soft drinks and juices	10	108.8	108.9	108.4	108.6	107.7	108.2	4.8	5.7	3.7	3.4	2.8	3.1
02.1 Alcoholic beverages	18	101.7	102.1	102.1	101.3	100.5	99.2	1.4	0.9	1.1	-0.1	0.4	0.2
02.1.1 Spirits	5	100.5	102.1	103.2	101.3	99.5	97.9	1.4	2.2	2.9	0.2	1.2	1.1
02.1.2 Wine	9	102.7	102.1	102.1	102.5	101.8	100.8	1.5	-0.4	0.2	0.7	0.5	0.9
02.1.3 Beer	4	100.7	101.5	100.4	98.1	98.3	97.0	1.0	2.2	1.0	-2.2	-0.8	-2.5
02.2 Tobacco	25	110.7	110.7	110.8	110.8	110.7	110.6	4.8	4.7	4.7	4.7	4.6	4.4
03.1 Clothing	54	89.3	90.6	92.2	92.1	92.7	92.0	-2.9	-3.9	-4.3	-4.7	-4.8	-4.3
03.1.2 Garments	50	88.4	89.9	91.5	91.4	92.0	91.3	-3.2	-4.2	-4.6	-5.0	-5.1	-4.6
03.1.3 Other clothing and clothing accessories	3	98.1	97.9	99.2	99.3	100.2	100.3	0.9	-1.3	-1.8	-2.1	-2.2	-2.0
03.1.4 Cleaning, repair and hire of clothing	1	108.7	108.8	109.0	109.1	109.5	108.5	3.9	3.6	3.4	3.2	3.4	2.3
03.2 Footwear including repairs	8	93.5	94.2	94.5	94.8	94.6	93.6	-0.7	-0.6	-2.1	-1.8	-2.1	-1.1
04.1 Actual rentals for housing	49	107.0	107.0	107.0	107.5	107.6	107.6	3.1	2.9	3.0	3.3	3.3	3.1
04.3 Regular maintenance and repair of the dwelling	17	106.5	106.6	106.9	107.2	107.5	108.1	5.0	4.5	4.3	4.7	4.6	4.4
04.3.1 Materials for maintenance and repair	10	104.5	104.6	104.9	105.0	105.2	106.0	5.3	4.4	4.3	4.7	4.6	4.3
04.3.2 Services for maintenance and repair	7	109.3	109.6	109.8	110.5	110.8	111.1	4.5	4.5	4.4	4.6	4.7	4.7
04.4 Water supply and misc. services for the dwelling	10	115.3	115.3	115.3	115.3	115.3	115.3	6.5	6.5	6.5	6.5	6.5	6.5
04.4.1 Water supply	5	115.7	115.7	115.7	115.7	115.7	115.7	6.2	6.2	6.2	6.2	6.2	6.2
04.4.3 Sewerage collection	5	114.9	114.9	114.9	114.9	114.9	114.9	6.9	6.9	6.9	6.9	6.9	6.9
04.5 Electricity, gas and other fuels	39	130.6	129.4	129.2	129.2	129.9	130.0	2.2	0.5	-1.0	-4.0	-5.6	-7.0
04.5.1 Electricity	19	129.4	128.8	128.6	128.5	128.5	128.5	3.9	2.5	1.2	-1.5	-3.3	-4.5
04.5.2 Gas	18	136.5	134.6	133.6	133.1	133.2	133.2	1.9	-0.7	-3.7	-8.5	-11.3	-12.9
04.5.3 Liquid fuels	1	112.3	110.0	116.7	121.0	137.3	138.1	-8.7	-8.5	2.5	15.8	37.6	32.1
04.5.4 Solid fuels	1	113.0	113.1	114.4	117.7	119.9	122.4	7.8	7.0	7.0	4.7	5.5	7.6
05.1 Furniture, furnishings and carpets	28	99.3	100.3	103.7	101.4	102.5	108.0	0.9	1.0	2.1	2.1	1.8	-0.2
05.1.1 Furniture and furnishings	22	99.0	100.0	104.1	101.3	103.4	108.9	0.8	1.1	2.1	2.5	2.4	-0.8
05.1.2 Carpets and other floor coverings	6	100.1	101.4	102.2	101.7	99.1	104.7	0.6	0.1	2.0	0.7	-0.8	1.8
05.2 Household textiles	8	91.0	92.7	93.7	91.6	92.7	93.4	-2.5	-2.2	-1.5	-2.4	-3.1	-2.5
05.3 Household appliances, fitting and repairs	8	96.1	95.4	97.4	96.8	98.7	99.1	0.7	-1.4	-2.2	1.8	3.8	4.3
05.3.1/2 Major appliances and small electric goods	7	95.2	94.4	96.7	96.0	98.0	98.5	0.5	-1.9	-2.7	1.8	4.0	4.6
05.3.3 Repair of household appliances	1	103.1	103.2	103.6	103.7	104.0	104.1	2.1	2.2	2.3	2.3	2.3	2.3
05.4 Glassware, tableware and household utensils	7	99.2	99.3	99.9	100.5	100.5	101.3	3.1	1.7	1.1	1.7	0.7	1.4
05.5 Tools and equipment for house and garden	6	102.2	102.2	101.9	101.7	101.0	101.7	1.9	1.5	0.4	-0.2	-0.7	-0.2
05.6 Goods and services for routine maintenance	11	108.2	108.0	108.1	108.0	108.4	108.5	3.9	3.4	3.5	2.6	2.9	2.8
05.6.1 Non-durable household goods	5	105.9	105.3	105.2	104.6	105.1	105.3	2.5	1.5	1.6	0.6	0.6	0.7
05.6.2 Domestic services and household services	6	110.1	110.3	110.6	110.9	111.1	111.2	5.1	5.0	5.1	4.4	4.9	4.5
06.1 Medical products, appliances and equipment	10	100.2	100.5	100.8	101.0	100.6	101.1	1.3	1.0	1.0	1.0	0.9	1.2
06.1.1 Pharmaceutical products	5	100.5	101.1	101.6	102.0	101.1	101.8	1.4	0.6	0.5	0.9	0.4	0.5
06.1.2/3 Other medical and therapeutic equipment	5	100.2	100.2	100.3	100.4	100.3	100.7	1.4	1.5	1.5	1.2	1.4	2.0

Key: - zero or negligible .. not available (nec) not elsewhere covered

Source: National Statistics

3 CPI: Detailed figures by divisions, groups and classes

continued

	Weights	Index (2005=100)						Percentage change over 12 months					
		2007	2007	2007	2007	2007	2007	2007	2007	2007	2007	2007	2007
			Jul	Aug	Sep	Oct	Nov	Dec	Jul	Aug	Sep	Oct	Nov
06.2 Out-patient services	5	108.7	109.0	109.4	109.6	109.5	109.7	3.7	3.5	3.8	3.7	3.3	3.4
06.2.1/3 Medical services & paramedical services	3	105.9	106.3	106.6	107.0	106.7	107.1	2.5	2.6	2.7	2.7	2.2	2.8
06.2.2 Dental services	2	112.0	112.2	112.6	112.5	112.8	112.6	5.2	4.8	5.2	5.0	4.8	4.3
06.3 Hospital services	9	113.8	114.0	114.2	115.0	115.0	115.1	5.7	5.7	5.9	5.5	5.4	5.5
07.1 Purchase of vehicles	49	99.4	99.1	98.9	98.9	99.0	98.6	-0.1	-0.3	-0.5	-0.5	-0.4	-0.8
07.1.1A New cars	27	102.6	102.6	102.6	102.8	102.9	102.8	1.6	1.5	1.5	1.6	1.4	1.4
07.1.1B Second-hand cars	19	94.0	93.3	92.9	92.6	92.9	92.0	-3.0	-3.4	-3.6	-3.7	-3.0	-3.6
07.1.2/3 Motorcycles and bicycles	3	99.6	100.0	98.6	98.5	98.1	97.9	0.9	1.0	-0.8	-0.8	-0.9	-1.9
07.2 Operation of personal transport equipment	72	110.4	110.3	109.9	111.6	113.9	115.1	1.7	1.2	3.9	8.1	10.3	10.1
07.2.1 Spare parts and accessories	6	103.1	103.8	104.1	103.7	103.8	103.7	-0.2	0.7	0.8	6.1	0.5	0.4
07.2.2 Fuels and lubricants	36	110.2	109.6	108.8	111.8	116.1	118.3	-1.3	-2.3	3.3	12.1	17.0	16.5
07.2.3 Maintenance and repairs	24	111.8	112.3	112.3	112.7	112.9	113.2	5.4	5.4	5.0	4.6	3.9	3.9
07.2.4 Other services	6	109.8	110.0	110.1	110.7	111.0	111.0	5.1	5.2	5.2	5.7	5.7	5.4
07.3 Transport services	31	116.7	120.3	107.4	108.2	104.2	110.7	7.6	9.9	4.9	7.0	5.1	5.9
07.3.1 Passenger transport by railway	8	109.7	110.1	110.0	109.6	109.6	109.6	4.6	4.3	6.1	5.8	4.8	5.3
07.3.2 Passenger transport by road	14	108.0	108.3	108.4	108.2	108.4	108.8	6.5	6.4	5.8	5.0	4.7	4.8
07.3.3 Passenger transport by air	7	120.2	129.1	92.8	96.9	84.0	106.4	3.4	9.1	0.5	7.0	0.8	2.6
07.3.4 Passenger transport by sea and inland waterway	2	149.7	162.6	121.5	118.9	111.6	113.2	17.8	25.9	-2.0	10.3	13.3	9.3
08.1 Postal services	1	121.5	121.5	121.5	121.5	121.5	121.5	12.6	12.6	6.3	6.3	6.3	6.3
08.2/3 Telephone and telefax equipment and services	23	93.6	96.1	95.6	95.1	95.2	95.1	-5.8	-2.6	-3.4	-4.6	-4.5	-4.2
09.1 Audio-visual equipment and related products	29	77.8	77.7	76.8	75.8	75.4	75.7	-12.1	-10.6	-12.3	-12.5	-13.5	-13.9
09.1.1 Reception and reproduction of sound and pictures	6	73.6	74.5	73.5	72.6	72.5	72.2	-13.3	-11.1	-13.3	-13.7	-14.2	-14.4
09.1.2 Photographic, cinematographic and optical equipment	4	55.0	54.9	53.7	54.2	50.9	48.9	-26.7	-24.7	-28.2	-27.4	-30.4	-31.8
09.1.3 Data processing equipment	7	68.4	67.3	64.7	64.1	62.9	62.7	-20.1	-22.8	-24.7	-21.7	-23.9	-24.6
09.1.4 Recording media	11	95.6	95.6	96.1	93.9	95.3	97.7	-1.8	1.8	1.5	-0.8	-1.0	-1.7
09.1.5 Repair of audio-visual equipment & related products	1	107.9	108.3	108.5	108.8	108.8	109.1	3.4	3.4	3.7	3.8	3.8	4.0
09.2 Other major durables for recreation & culture	9	100.7	100.7	100.8	101.1	101.7	101.7	-0.1	-0.1	-0.1	0.1	0.9	0.9
09.2.1/2 Major durables for in/outdoor recreation	9	100.7	100.7	100.8	101.1	101.7	101.7	-0.1	-0.1	-0.1	0.1	0.9	0.9
09.3 Other recreational items, gardens and pets	37	95.7	96.6	97.3	97.5	97.6	98.2	-0.8	-1.3	0.3	0.2	0.6	0.7
09.3.1 Games, toys and hobbies	21	91.0	92.9	93.6	93.7	93.3	94.0	-2.6	-2.8	-0.4	-0.8	-0.6	-0.5
09.3.2 Equipment for sport and open-air recreation	4	98.1	98.4	98.6	98.5	99.1	98.3	1.0	-0.6	-0.1	0.0	0.9	0.3
09.3.3 Gardens, plants and flowers	5	99.7	99.7	100.1	100.3	100.4	101.7	0.8	1.1	1.2	2.0	0.7	1.2
09.3.4/5 Pets, related products and services	7	106.5	105.1	106.4	106.7	108.5	109.2	2.5	1.7	2.1	2.2	3.9	4.4
09.4 Recreational and cultural services	32	108.5	109.4	110.0	110.7	110.7	110.8	3.5	4.8	3.9	3.8	4.0	3.6
09.4.1 Recreational and sporting services	10	109.0	109.2	112.6	113.3	113.3	113.3	4.3	4.2	5.0	5.7	5.6	5.6
09.4.2 Cultural services	22	108.4	109.5	108.8	109.5	109.6	109.7	3.1	5.0	3.3	3.0	3.2	2.7
09.5 Books, newspapers and stationery	17	105.8	106.1	106.8	107.0	106.4	106.8	1.8	2.5	2.1	2.8	1.7	1.3
09.5.1 Books	5	106.6	108.3	109.7	109.1	106.2	106.3	2.7	5.1	5.7	6.3	2.3	0.5
09.5.2 Newspapers and periodicals	7	110.0	110.0	110.6	111.5	111.9	112.8	3.5	3.2	2.0	3.1	3.0	3.7
09.5.3/4 Misc. printed matter, stationery, drawing materials	5	98.7	98.1	98.0	98.3	98.7	98.9	-2.1	-1.9	-2.1	-1.8	-1.5	-1.7
09.6 Package holidays	29	100.1	100.4	100.4	100.7	100.8	101.1	0.8	0.9	1.3	1.4	1.1	1.4
10.0 Education	18	117.8	117.8	122.9	133.2	133.2	133.2	14.0	14.0	13.9	13.2	13.2	13.2
11.1 Catering services	119	107.0	107.2	107.4	107.7	107.9	108.2	3.7	3.7	3.7	3.6	3.4	3.4
11.1.1 Restaurants & cafes	106	106.9	107.0	107.2	107.5	107.7	108.1	3.5	3.4	3.5	3.4	3.3	3.4
11.1.2 Canteens	13	107.8	108.3	108.8	109.0	109.2	109.1	5.1	5.5	5.7	5.4	4.1	4.0
11.2 Accommodation services	19	108.5	108.5	109.0	109.4	109.1	108.9	3.2	3.2	3.3	3.0	3.4	3.3
12.1 Personal care	31	104.6	104.1	103.9	105.4	105.5	105.4	2.9	1.5	1.2	2.5	2.8	3.1
12.1.1 Hairdressing and personal grooming establishments	8	107.7	107.7	108.1	108.4	108.9	109.1	3.7	3.5	3.8	3.7	3.9	3.7
12.1.2/3 Appliances and products for personal care	23	103.5	102.8	102.5	104.3	104.3	104.0	2.7	0.9	0.3	2.1	2.4	2.9
12.3 Personal effects (nec)	10	104.4	105.4	106.2	106.0	106.7	106.7	2.6	1.5	1.7	1.6	2.3	2.4
12.3.1 Jewellery, clocks and watches	7	107.1	108.1	108.8	108.9	109.6	109.6	2.4	1.9	2.0	2.0	2.6	3.0
12.3.2 Other personal effects	3	99.8	100.8	102.0	100.9	101.8	101.7	2.8	0.7	1.2	0.5	1.6	1.1
12.4 Social protection	12	111.8	112.1	112.6	113.0	113.5	113.7	5.6	5.7	5.4	5.4	5.4	5.3
12.5 Insurance	8	105.7	105.9	106.1	106.5	106.8	107.5	2.3	3.2	3.6	3.9	3.2	4.4
12.5.2 House contents insurance	2	102.3	102.8	103.0	102.1	103.7	104.9	0.0	0.2	0.5	-1.2	0.8	2.4
12.5.3 Health insurance	2	116.3	116.3	116.3	117.5	117.5	117.5	6.9	6.9	6.9	6.8	6.8	6.8
12.5.4 Transport insurance	4	103.1	103.3	103.5	104.2	104.1	104.7	1.3	2.9	3.5	5.0	2.7	4.2
12.6 Financial services (nec)	28	103.7	101.9	102.1	102.0	101.8	102.4	-1.4	-3.0	-3.0	-3.5	-3.0	-2.5
12.6.2 Other financial services (nec)	28	103.7	101.9	102.1	102.0	101.8	102.4	-1.4	-3.0	-3.0	-3.5	-3.0	-2.5
12.7 Other services (nec)	11	109.6	110.1	110.4	112.0	112.4	112.6	2.9	3.1	3.0	3.7	3.8	3.7

Key: - zero or negligible .. not available (nec) not elsewhere covered

Source: National Statistics

4 CPI: Detailed figures by division¹

	Food and non-alcoholic beverages	Alcoholic beverages and tobacco	Clothing and footwear	Housing, water, electricity, gas & other fuels	Furniture, household equipment & routine maintenance	Health ²	Transport	Communication	Recreation and culture	Education ²	Restaurants and hotels	Miscellaneous goods and services ²	CPI (overall index)
COICOP Division	01	02	03	04	05	06	07	08	09	10	11	12	
Weights													
2007	CHZR 103	CHZS 43	CHZT 62	CHZU 115	CHZV 68	CHZW 24	CHZX 152	CHZY 24	CHZZ 153	CJUU 18	CJUV 138	CJUW 100	CHZQ 1 000
Monthly indices (2005=100)													
2005 Dec	D7BU 100.7	D7BV 100.2	D7BW 100.1	D7BX 102.8	D7BY 102.8	D7BZ 100.3	D7C2 100.7	D7C3 99.4	D7C4 99.5	D7C5 103.3	D7C6 101.4	D7C7 101.5	D7BT 101.0
2006 Jan	100.4	101.0	96.0	103.3	97.8	101.0	101.2	100.9	98.6	103.3	101.5	102.0	100.5
Feb	101.0	100.8	95.9	103.6	98.5	101.1	101.4	101.0	99.4	103.3	101.9	102.1	100.9
Mar	100.4	101.1	96.5	104.5	100.3	101.0	101.4	100.9	98.9	103.3	102.2	102.4	101.1
Apr	100.2	102.3	96.5	107.3	98.5	102.2	102.9	100.9	99.1	103.3	102.5	103.3	101.7
May	101.7	102.5	97.2	108.8	99.3	102.6	103.5	99.7	98.9	103.3	103.0	103.4	102.2
Jun	102.4	103.6	96.7	109.7	100.2	102.5	103.5	100.0	98.7	103.3	103.1	103.9	102.5
Jul	102.6	103.4	92.2	110.5	98.1	103.0	105.5	99.8	98.4	103.3	103.5	104.0	102.5
Aug	103.0	103.8	94.4	110.9	99.1	103.4	105.8	99.2	98.4	103.3	103.6	104.5	102.9
Sep	103.6	103.7	96.4	111.5	100.6	103.6	102.9	99.6	98.6	107.9	103.8	104.7	103.0
Oct	104.2	103.9	96.6	112.7	99.0	104.2	101.5	100.4	98.6	117.8	104.2	105.0	103.2
Nov	105.1	103.4	97.2	113.7	100.0	104.1	101.1	100.3	98.7	117.8	104.5	105.0	103.4
Dec	105.4	103.0	96.0	114.5	103.3	104.2	102.8	99.9	99.2	117.8	104.7	104.9	104.0
2007 Jan	104.4	104.5	92.0	114.9	98.3	104.8	102.1	99.0	98.3	117.8	104.9	105.1	103.2
Feb	105.4	105.1	91.9	115.1	99.6	104.9	102.8	98.1	98.4	117.8	105.2	105.8	103.7
Mar	106.0	105.6	92.8	115.0	102.9	104.8	103.1	98.1	98.2	117.8	105.7	106.2	104.2
Apr	106.2	107.0	93.7	115.7	100.7	105.5	104.5	97.2	98.3	117.8	106.3	105.8	104.5
May	106.7	106.8	93.7	115.0	101.8	105.8	106.1	96.6	98.0	117.8	106.6	105.7	104.8
Jun	107.3	107.1	93.6	114.5	104.0	106.1	106.8	96.1	97.6	117.8	106.9	105.8	105.0
Jul	105.5	106.9	89.8	114.3	99.7	106.6	108.0	94.8	97.0	117.8	107.2	106.1	104.4
Aug	106.1	107.0	91.1	114.0	100.3	106.8	108.6	97.2	97.5	117.8	107.4	105.6	104.7
Sep	107.4	107.1	92.5	114.0	102.1	107.1	105.7	96.6	97.6	122.9	107.6	105.8	104.8
Oct	109.1	106.8	92.5	114.3	100.8	107.5	106.6	96.2	97.7	133.2	107.9	106.4	105.3
Nov	110.1	106.4	92.9	114.6	101.6	107.3	107.0	96.3	97.6	133.2	108.0	106.6	105.6
Dec	111.1	105.7	92.2	114.7	104.2	107.6	108.7	96.2	98.0	133.2	108.3	106.8	106.2
Percentage change on a year earlier													
2005 Dec	D7G8 1.7	D7G9 2.5	D7GA -4.2	D7GB 6.4	D7GC -	D7GD 2.4	D7GE 2.8	D7GF -1.0	D7GG -1.7	D7GH 4.7	D7GI 3.5	D7GJ 4.2	D7G7 1.9
2006 Jan	1.2	2.3	-4.7	6.3	-0.8	2.3	5.1	0.5	-2.1	4.7	3.4	3.5	1.9
Feb	1.1	1.6	-4.7	6.4	-0.5	2.3	4.2	0.4	-0.8	4.7	3.5	3.6	2.0
Mar	-0.4	2.5	-4.7	7.0	-0.4	2.1	3.5	0.5	-1.4	4.7	3.6	3.7	1.8
Apr	0.3	2.5	-4.4	7.7	-0.8	2.7	4.4	0.3	-1.6	4.7	3.0	4.0	2.0
May	1.1	2.2	-3.7	9.0	-0.8	2.9	4.0	-0.4	-1.6	4.7	3.2	4.1	2.2
Jun	1.8	3.3	-3.9	9.8	-0.1	2.7	3.9	-0.3	-1.6	4.7	3.2	4.4	2.5
Jul	3.2	2.8	-4.5	10.0	-1.3	2.4	3.3	0.3	-1.4	4.7	3.2	3.6	2.4
Aug	3.4	3.3	-3.9	10.5	-0.5	2.6	2.4	-0.7	-0.9	4.7	3.0	3.9	2.5
Sep	4.0	3.4	-3.5	10.7	0.3	2.8	0.6	-0.2	-1.0	7.1	2.9	3.9	2.4
Oct	4.7	3.2	-3.3	10.8	-0.4	3.1	-0.5	0.9	-1.1	14.0	3.0	3.8	2.4
Nov	5.0	2.7	-3.2	11.1	-0.5	3.1	0.8	0.7	-0.7	14.0	3.2	3.5	2.7
Dec	4.6	2.7	-4.1	11.4	0.6	3.9	2.1	0.5	-0.3	14.0	3.2	3.3	3.0
2007 Jan	3.9	3.5	-4.1	11.2	0.5	3.8	0.9	-1.8	-0.3	14.0	3.3	3.1	2.7
Feb	4.4	4.2	-4.2	11.1	1.2	3.7	1.4	-2.8	-1.0	14.0	3.3	3.6	2.8
Mar	5.6	4.4	-3.9	10.1	2.7	3.7	1.6	-2.8	-0.7	14.0	3.4	3.7	3.1
Apr	6.0	4.5	-2.8	7.9	2.2	3.2	1.5	-3.7	-0.8	14.0	3.8	2.4	2.8
May	5.0	4.2	-3.6	5.7	2.5	3.1	2.5	-3.2	-0.8	14.0	3.5	2.2	2.5
Jun	4.8	3.4	-3.2	4.3	3.8	3.4	3.2	-3.9	-1.1	14.0	3.7	1.8	2.4
Jul	2.8	3.4	-2.6	3.5	1.6	3.4	2.4	-5.0	-1.4	14.0	3.6	2.0	1.9
Aug	3.0	3.1	-3.5	2.8	1.2	3.3	2.6	-2.0	-0.9	14.0	3.6	1.1	1.8
Sep	3.7	3.2	-4.0	2.3	1.5	3.4	2.7	-3.0	-1.0	13.9	3.7	1.0	1.8
Oct	4.7	2.7	-4.3	1.4	1.8	3.2	5.1	-4.2	-0.9	13.2	3.5	1.3	2.1
Nov	4.8	2.9	-4.4	0.8	1.7	3.1	5.8	-4.0	-1.1	13.2	3.4	1.6	2.1
Dec	5.4	2.7	-3.9	0.2	0.9	3.3	5.8	-3.8	-1.3	13.2	3.4	1.9	2.1

Key: - zero or negligible

¹ Inflation rates prior to 1997 and index levels prior to 1996 are estimated. Further details are given in *Economic Trends No. 541 December 1998*. These details are also available on the National Statistics website: www.statistics.gov.uk/cpi/article.asp?ID=31

² The coverage of these categories was extended in January 2000; further extensions to coverage came into effect in January 2001 for health and miscellaneous goods and services; the coverage of miscellaneous goods and services was further extended with effect from January 2002 (details are given in a series of Economic Trends articles available on the National Statistics website: www.statistics.gov.uk/cpi)

Source: National Statistics

5 CPI: Detailed goods and services breakdown¹

	Weights	Index (2005=100)						Percentage change over 12 months						Percentage change over 1 month
		2007	2007	2007	2007	2007	2007	2007	2007	2007	2007	2007	2007	2007
		Jul	Aug	Sep	Oct	Nov	Dec	Jul	Aug	Sep	Oct	Nov	Dec	Dec
CPI (overall index)	1 000	104.4	104.7	104.8	105.3	105.6	106.2	1.9	1.8	1.8	2.1	2.1	2.1	0.6
All goods	547	101.6	101.9	102.5	102.8	103.5	104.1	0.5	0.1	0.4	1.0	1.1	1.1	0.5
Food, alcoholic beverages & tobacco	146	105.9	106.4	107.3	108.4	109.0	109.5	3.0	3.0	3.6	4.1	4.2	4.6	0.4
Processed food & non-alcoholic beverages	55	106.2	106.5	108.8	109.5	111.1	112.4	3.3	3.0	4.9	5.4	6.7	7.6	1.2
Non-processed food	48	104.7	105.7	105.8	108.6	109.0	109.5	2.3	3.0	2.3	4.0	2.6	3.0	0.5
Seasonal food	27	106.4	107.9	108.8	111.6	112.2	112.4	4.3	5.7	4.7	6.1	3.6	4.1	0.2
Meat	21	102.6	102.9	102.0	104.8	105.0	105.9	-0.2	-0.3	-0.7	1.3	1.3	1.5	0.8
Alcoholic beverages & tobacco	43	106.9	107.0	107.1	106.8	106.4	105.7	3.4	3.1	3.2	2.7	2.9	2.7	-0.6
Industrial goods	401	100.1	100.3	100.8	100.9	101.5	102.1	-0.4	-1.0	-0.7	-0.2	0.0	-0.2	0.6
Energy	75	120.4	119.5	119.0	120.7	123.5	124.8	0.9	-0.5	1.5	3.9	5.3	4.4	1.0
Electricity, gas & miscellaneous energy	38	132.2	131.0	130.6	130.4	130.5	130.6	3.2	1.3	-0.8	-4.6	-6.8	-8.1	0.1
Liquid fuels, vehicle fuels & lubricants	37	110.3	109.6	109.0	112.1	116.7	118.9	-1.6	-2.6	3.2	12.2	17.6	17.0	1.8
Non-energy industrial goods	326	96.3	96.8	97.4	97.2	97.5	98.0	-0.8	-1.1	-1.2	-1.1	-1.2	-1.3	0.5
Clothing & footwear goods	61	89.5	90.8	92.2	92.2	92.7	92.0	-2.7	-3.6	-4.2	-4.4	-4.5	-4.0	-0.8
Housing goods	76	100.4	100.9	102.6	101.4	102.2	104.6	2.1	1.6	1.9	2.3	2.1	1.3	2.4
Household goods	61	98.7	99.2	101.2	99.8	100.7	103.5	1.2	0.8	1.1	1.5	1.3	0.4	2.8
Water supply; materials for maintenance & repair	15	108.0	108.1	108.3	108.3	108.5	109.0	5.7	5.0	4.9	5.2	5.2	4.9	0.5
Medical products, appliances & equipment	10	100.2	100.5	100.8	101.0	100.6	101.1	1.3	1.0	1.0	1.0	0.9	1.2	0.5
Vehicles, spare parts & accessories	55	99.8	99.6	99.4	99.4	99.5	99.1	-0.1	-0.2	-0.4	-0.4	-0.3	-0.6	-0.4
Recreational goods	91	92.2	92.6	92.6	92.4	92.3	92.7	-3.9	-3.5	-3.5	-3.4	-3.7	-3.9	0.5
Audio-visual goods	28	76.8	76.7	75.7	74.7	74.3	74.6	-12.7	-11.1	-12.9	-13.1	-14.1	-14.6	0.4
Other recreational goods	63	99.0	99.7	100.3	100.5	100.5	101.0	0.0	-0.1	0.8	0.9	0.9	0.9	0.5
Miscellaneous goods	33	103.9	103.7	103.7	104.9	105.2	105.0	2.7	1.1	0.8	2.0	2.4	2.7	-0.2
All services	453	107.8	108.3	107.7	108.4	108.2	108.9	3.5	3.8	3.4	3.4	3.2	3.3	0.6
Housing services	70	107.9	108.0	108.0	108.4	108.6	108.7	3.6	3.5	3.5	3.7	3.7	3.6	0.1
Actual rentals for housing	49	107.0	107.0	107.0	107.5	107.6	107.6	3.1	2.9	3.0	3.3	3.3	3.1	-
Primary housing services	14	110.4	110.6	110.7	111.0	111.3	111.6	4.8	4.8	4.8	4.6	5.0	5.2	0.3
Other housing services	7	109.0	109.3	109.6	109.8	110.1	110.1	4.7	4.6	4.7	4.1	4.5	4.2	-
Travel & transport services	65	113.5	115.5	109.2	109.7	107.9	111.3	6.3	7.6	4.9	5.9	4.6	5.0	3.1
Services for personal transport equipment	30	111.4	111.9	111.9	112.3	112.5	112.8	5.3	5.4	5.0	4.8	4.3	4.2	0.2
Transport services	31	116.7	120.3	107.4	108.2	104.2	110.7	7.6	9.9	4.9	7.0	5.1	5.9	6.3
Transport insurance	4	103.1	103.3	103.5	104.2	104.1	104.7	1.3	2.9	3.5	5.0	2.7	4.2	0.6
Communication	24	94.8	97.2	96.6	96.2	96.3	96.2	-5.0	-2.0	-3.0	-4.2	-4.0	-3.8	-0.1
Recreational & personal services	209	106.4	106.7	107.0	107.4	107.5	107.7	3.2	3.4	3.4	3.3	3.2	3.2	0.2
Package holidays & accommodation	48	103.4	103.5	103.8	104.1	104.0	104.1	1.8	1.8	2.1	2.0	2.0	2.1	0.1
Other recreational & personal services	161	107.3	107.7	107.9	108.3	108.5	108.8	3.6	3.8	3.8	3.7	3.5	3.5	0.3
Catering services	119	107.0	107.2	107.4	107.7	107.9	108.2	3.7	3.7	3.7	3.6	3.4	3.4	0.3
Non-catering recreational & personal services	42	108.4	109.1	109.5	110.2	110.3	110.4	3.5	4.4	3.8	3.8	3.9	3.6	0.1
Miscellaneous & other services	85	110.1	109.6	110.9	113.3	113.3	113.6	4.4	3.9	4.0	3.8	4.0	4.1	0.2
Miscellaneous services	53	107.3	106.5	106.7	107.2	107.2	107.6	1.4	0.6	0.5	0.4	0.7	0.9	0.4
Medical services	14	112.2	112.3	112.6	113.2	113.2	113.3	5.0	5.0	5.1	4.9	4.7	4.7	0.1
Education	18	117.8	117.8	122.9	133.2	133.2	133.2	14.0	14.0	13.9	13.2	13.2	13.2	-
Special aggregates														
Durables	117	94.9	95.0	95.6	94.9	95.2	96.2	-2.2	-2.3	-2.6	-2.1	-2.2	-3.0	1.1
Semi-durables	132	93.1	94.3	95.3	94.9	95.2	95.2	-1.5	-1.8	-1.6	-2.1	-2.3	-2.1	-
Non-durables	77	104.4	104.0	104.1	104.9	105.1	105.4	2.7	1.8	1.6	2.3	2.4	2.7	0.3
Seasonal food	27	106.4	107.9	108.8	111.6	112.2	112.4	4.3	5.7	4.7	6.1	3.6	4.1	0.2
Non-seasonal food	63	104.4	104.8	106.6	108.1	109.7	111.1	1.8	1.6	3.4	4.6	5.8	6.7	1.3
Energy, food, alcoholic beverages & tobacco	221	110.2	110.3	110.8	112.0	113.3	114.0	2.3	1.8	2.8	4.0	4.6	4.5	0.6
Energy & unprocessed food	123	113.7	113.5	113.3	115.4	117.2	118.2	1.5	0.8	1.8	3.9	4.2	3.8	0.8
Energy & seasonal food	102	116.3	116.1	116.0	118.0	120.1	121.1	1.8	1.1	2.3	4.5	4.8	4.3	0.8
Tobacco	25	110.7	110.7	110.8	110.8	110.7	110.6	4.8	4.7	4.7	4.7	4.6	4.4	-0.1
Housing, water, electricity, gas & other fuels	115	114.3	114.0	114.0	114.3	114.6	114.7	3.5	2.8	2.3	1.4	0.8	0.2	0.1
Education, health & social protection ²	54	111.3	111.5	113.3	116.9	116.9	117.1	7.3	7.2	7.2	7.0	7.0	7.0	0.2
<i>All items excluding</i>														
Energy	925	103.3	103.8	103.9	104.3	104.4	105.0	1.9	2.0	1.8	2.0	1.8	1.9	0.5
Energy, food, alcoholic beverages & tobacco	779	102.8	103.3	103.2	103.5	103.6	104.1	1.7	1.8	1.5	1.5	1.4	1.4	0.6
Energy & unprocessed food	877	103.2	103.7	103.8	104.1	104.2	104.7	1.9	1.9	1.8	1.8	1.8	1.8	0.5
Seasonal food	973	104.3	104.7	104.7	105.2	105.4	106.0	1.8	1.7	1.7	2.0	2.1	2.0	0.6
Energy & seasonal food	898	103.2	103.6	103.7	104.1	104.2	104.7	1.9	1.8	1.7	1.8	1.8	1.8	0.5
Tobacco	975	104.2	104.6	104.7	105.2	105.5	106.1	1.8	1.7	1.7	2.0	2.0	2.0	0.6
Alcoholic beverages & tobacco	957	104.3	104.6	104.7	105.3	105.6	106.2	1.8	1.7	1.7	2.1	2.1	2.1	0.6
Liquid fuels, vehicle fuels & lubricants	963	104.1	104.5	104.6	105.1	105.2	105.7	2.0	1.9	1.7	1.7	1.5	1.5	0.5
Housing, water, electricity, gas & other fuels	885	103.2	103.6	103.7	104.3	104.5	105.2	1.6	1.6	1.7	2.2	2.3	2.3	0.6
Education, health & social protection	946	104.0	104.4	104.4	104.7	105.0	105.6	1.6	1.5	1.5	1.8	1.8	1.8	0.6

Key: - zero or negligible

2 The coverage of this special aggregate has changed extensively since January 2000, when Social protection was first included and extensions to the Education and Health divisions also took effect. Health was further extended with effect from January 2001. Details are given in a series of Economic Trends articles available on the National Statistics website: www.statistics.gov.uk/cpi

1 For further information on the composition of the indices shown, see 'The Consumer Prices Index: Goods and Services Indices and Special Aggregates', which can be downloaded from: www.statistics.gov.uk/cpi/article.asp?id=1060

6 CPI goods and services: the latest three years

Percentage change over 12 months

	Goods components				All goods	Services components					All services
	Food & non-alcoholic beverages	Alcoholic beverages & tobacco	Energy ¹	Non-energy industrial goods ²		Housing services ³	Travel & transport services ³	Recreational & personal services ³	Communication	Miscellaneous & other services ³	
Weights	CHZR	CHZS	A9F3	A9ER	ICVH	A9FG	A9FJ	A9FL	CHZY	A9FQ	ICVI
2007	103	43	75	326	547	70	65	209	24	85	453
Monthly	D7G8	D7G9	DKL5	DKK3	D7NM	DKN2	DKN5	DKN7	D7GF	DKO4	D7NN
2004 Dec	-0.1	2.1	10.6	-2.0	-0.1	3.5	6.3	3.0	-2.2	5.0	3.7
2005 Jan	0.4	2.5	9.0	-2.2	-0.2	3.5	5.3	3.2	-2.3	5.5	3.7
Feb	0.8	2.9	9.6	-2.6	-0.2	3.5	5.8	3.3	-2.7	5.6	3.8
Mar	1.7	2.2	10.1	-2.2	0.2	3.6	6.8	3.2	-2.9	5.5	3.9
Apr	1.0	2.0	11.5	-2.2	0.1	4.3	4.9	3.4	-3.2	6.5	4.0
May	1.4	2.3	8.3	-2.2	-0.1	4.3	6.3	3.4	-3.6	6.6	4.2
Jun	2.2	2.3	8.7	-2.1	0.2	4.2	6.0	3.1	-2.9	6.8	4.1
Jul	1.7	2.2	11.2	-1.9	0.5	4.4	6.9	3.2	-2.5	7.7	4.5
Aug	2.2	1.8	12.4	-2.1	0.6	4.4	7.5	3.1	-2.1	7.7	4.6
Sep	2.0	1.4	15.4	-2.2	0.7	4.4	6.3	3.2	-1.2	7.5	4.5
Oct	1.5	1.9	13.9	-2.1	0.6	4.0	7.2	3.3	-1.6	6.6	4.4
Nov	1.7	2.5	11.1	-2.0	0.4	3.9	5.8	3.1	-1.2	6.6	4.1
Dec	1.7	2.5	10.2	-2.1	0.3	4.0	3.4	3.1	-1.0	6.6	3.8
2006 Jan	1.2	2.3	12.8	-2.3	0.3	3.9	6.1	2.9	0.5	5.6	3.9
Feb	1.1	1.6	12.5	-1.7	0.6	3.9	4.8	2.9	0.4	5.6	3.7
Mar	-0.4	2.5	12.2	-1.9	0.2	3.9	4.4	2.9	0.5	5.7	3.7
Apr	0.3	2.5	14.4	-2.2	0.5	3.3	6.5	2.7	0.3	5.7	3.8
May	1.1	2.2	19.3	-1.9	1.3	3.3	2.8	2.9	-0.4	5.6	3.3
Jun	1.8	3.3	19.8	-1.7	1.7	3.4	3.2	2.9	-0.3	5.6	3.4
Jul	3.2	2.8	19.4	-2.0	1.8	3.4	2.4	2.9	0.3	4.9	3.2
Aug	3.4	3.3	17.9	-1.3	2.2	3.4	1.6	2.8	-0.7	4.7	2.9
Sep	4.0	3.4	11.6	-1.0	1.8	3.3	3.0	2.8	-0.2	5.3	3.2
Oct	4.7	3.2	9.8	-1.3	1.5	3.4	2.5	3.0	0.9	6.7	3.6
Nov	5.0	2.7	11.7	-1.1	1.8	3.5	3.7	3.1	0.7	6.4	3.7
Dec	4.6	2.7	14.9	-0.8	2.3	3.5	4.1	3.1	0.5	6.4	3.8
2007 Jan	3.9	3.5	12.8	-0.9	2.0	3.8	3.1	3.2	-1.8	6.1	3.6
Feb	4.4	4.2	11.8	-1.0	2.0	3.7	5.0	3.2	-2.8	6.1	3.8
Mar	5.6	4.4	11.6	-0.5	2.5	3.7	4.2	3.3	-2.8	6.1	3.7
Apr	6.0	4.5	7.9	-0.3	2.3	3.8	3.8	3.3	-3.7	4.5	3.3
May	5.0	4.2	4.4	-0.4	1.6	3.8	6.4	3.1	-3.2	4.4	3.6
Jun	4.8	3.4	3.3	-0.4	1.4	3.7	6.8	3.3	-3.9	4.4	3.7
Jul	2.8	3.4	0.9	-0.8	0.5	3.6	6.3	3.2	-5.0	4.4	3.5
Aug	3.0	3.1	-0.5	-1.1	0.1	3.5	7.6	3.4	-2.0	3.9	3.8
Sep	3.7	3.2	1.5	-1.2	0.4	3.5	4.9	3.4	-3.0	4.0	3.4
Oct	4.7	2.7	3.9	-1.1	1.0	3.7	5.9	3.3	-4.2	3.8	3.4
Nov	4.8	2.9	5.3	-1.2	1.1	3.7	4.6	3.2	-4.0	4.0	3.2
Dec	5.4	2.7	4.4	-1.3	1.1	3.6	5.0	3.2	-3.8	4.1	3.3

Key: - zero or negligible

³ For further information on all of these services components, see 'The Consumer Prices Index: Goods and Services Indices and Special Aggregates', which can be downloaded from: www.statistics.gov.uk/cci/article.asp?id=1060

¹ Comprises 'Electricity, gas and other fuels' (group 04.5) and 'Fuels and lubricants' (class 07.2.2).

² Comprises all other goods elements of the CPI. For further information, see 'The Consumer Prices Index: Goods and Services Indices and Special Aggregates', which can be downloaded from: www.statistics.gov.uk/cci/article.asp?id=1060

Source: National Statistics

7 HICP¹ - International comparisons: EU countries

Percentage change over 12 months

	Austria	Belgium	Bulgaria	Cyprus	Czech Republic	Denmark	Estonia	Finland	France	Germany	Greece	Hungary	Ireland	Italy	Latvia
	D7SK	D7SL	GHY8	D7RO	D7RP	D7SM	D7RQ	D7SN	D7SO	D7SP	D7SQ	D7RR	D7SS	D7ST	D7RS
2005	2.1	2.5	6.0	2.0	1.6	1.7	4.1	0.8	1.9	1.9	3.5	3.5	2.2	2.2	6.9
2006	1.7	2.3	7.4	2.2	2.0	1.9	4.4	1.3	1.9	1.8	3.3	4.0	2.7	2.2	6.6
2007
2005 Dec	1.6	2.8	7.4	1.4	1.9	2.2	3.6	1.1	1.8	2.1	3.5	3.3	1.9	2.1	7.1
2006 Jan	1.5	2.8	7.6	2.0	2.4	2.0	4.7	1.2	2.3	2.1	3.0	2.5	2.5	2.2	7.6
Feb	1.5	2.8	9.4	2.3	2.4	2.1	4.5	1.3	2.0	2.1	3.1	2.3	2.7	2.2	7.0
Mar	1.3	2.2	9.1	2.6	2.4	1.8	4.0	1.2	1.7	1.9	3.3	2.4	2.8	2.2	6.6
Apr	2.1	2.6	8.5	2.5	2.3	1.8	4.3	1.5	2.0	2.3	3.5	2.4	2.7	2.3	6.1
May	2.1	2.8	9.0	2.5	2.8	2.1	4.6	1.7	2.4	2.1	3.3	2.9	3.0	2.3	7.1
Jun	1.9	2.5	8.4	2.6	2.3	2.1	4.4	1.5	2.2	2.0	3.4	2.9	2.9	2.4	6.3
Jul	2.0	2.4	7.8	2.8	2.4	2.0	4.5	1.4	2.2	2.1	3.9	3.2	2.9	2.3	6.9
Aug	2.1	2.3	7.0	2.7	2.6	1.9	5.0	1.3	2.1	1.8	3.4	4.7	3.2	2.3	6.8
Sep	1.3	1.9	5.4	2.2	2.2	1.5	3.8	0.8	1.5	1.0	3.1	5.9	2.2	2.4	5.9
Oct	1.3	1.7	5.2	1.7	0.8	1.4	3.8	0.9	1.2	1.1	3.1	6.3	2.2	1.9	5.6
Nov	1.6	2.0	5.9	1.3	1.0	1.8	4.7	1.3	1.6	1.5	3.2	6.4	2.4	2.0	6.3
Dec	1.6	2.1	6.1	1.5	1.5	1.7	5.1	1.2	1.7	1.4	3.2	6.6	3.0	2.1	6.8
2007 Jan	1.7	1.7	6.8	1.4	1.4	1.8	5.0	1.3	1.4	1.8	3.0	8.4	2.9	1.9	7.1
Feb	1.7	1.8	4.6	1.2	1.7	1.9	4.6	1.2	1.2	1.9	3.0	9.0	2.6	2.1	7.2
Mar	1.9	1.8	4.4	1.4	2.1	1.9	5.6	1.6	1.2	2.0	2.8	9.0	2.9	2.1	8.5
Apr	1.8	1.8	4.4	1.6	2.7	1.7	5.6	1.5	1.3	2.0	2.6	8.7	2.9	1.8	8.8
May	1.9	1.3	4.5	1.9	2.4	1.7	5.9	1.3	1.2	2.0	2.6	8.4	2.7	1.9	7.8
Jun	1.9	1.3	5.3	1.7	2.6	1.3	6.0	1.4	1.3	2.0	2.6	8.5	2.8	1.9	8.9
Jul	2.0	1.3	6.8	2.3	2.5	1.1	6.5	1.6	1.2	2.0	2.7	8.3	2.7	1.7	9.5
Aug	1.7	1.2	9.3	2.2	2.6	0.9	6.1	1.3	1.3	2.0	2.7	7.1	2.3	1.7	10.2
Sep	2.1	1.4	11.0	2.3	2.8	1.2	7.5	1.7	1.6	2.7	2.9	6.4	2.9	1.7	11.5
Oct	2.9	2.2	10.6	2.7	4.0	1.8	8.7	1.8	2.1	2.7	3.0	6.9	3.0	2.3	13.2
Nov	3.2*	2.9	11.4	3.2	5.1	2.5	9.3	2.1	2.6	3.3	3.9	7.2	3.5	2.6	13.7
Dec

	Lithuania	Luxembourg	Malta	Netherlands	Poland	Portugal	Romania	Slovakia	Slovenia	Spain	Sweden	United Kingdom ¹	EICP ² EU 25 average ³	EICP ² EU 27 average ³	Monetary Union Area average ⁴
	D7RT	D7SU	D7RU	D7SV	D7RV	D7SX	GHY7	D7RW	D7RX	D7SY	D7SZ	D7G7	D7RY	GJ2E	D7SR
2005	2.7	3.8	2.5	1.5	2.2	2.1	9.1	2.8	2.5	3.4	0.8	2.1	2.2	..	2.2
2006	3.8	3.0	2.6	1.7	1.3	3.0	6.6	4.3	2.5	3.6	1.5	2.3	2.2	..	2.2
2007	2.3
2005 Dec	3.0	3.4	3.4	2.0	0.8	2.5	8.7	3.9	2.4	3.7	1.3	1.9	2.1	..	2.2
2006 Jan	3.5	4.1	2.4	1.8	0.9	2.7	9.0	4.1	2.6	4.2	1.1	1.9	2.3	..	2.4
Feb	3.4	3.9	2.3	1.4	0.9	3.0	8.6	4.3	2.3	4.1	1.1	2.0	2.2	..	2.3
Mar	3.1	3.7	2.9	1.4	0.9	3.8	8.5	4.3	2.0	3.9	1.5	1.8	2.1	..	2.2
Apr	3.4	3.5	3.5	1.8	1.2	3.7	7.0	4.4	2.8	3.9	1.8	2.0	2.3	..	2.5
May	3.6	3.6	3.5	1.8	1.5	3.7	7.3	4.8	3.4	4.1	1.9	2.2	2.4	..	2.5
Jun	3.7	3.9	3.3	1.8	1.5	3.5	7.2	4.5	3.0	4.0	1.9	2.5	2.4	..	2.5
Jul	4.4	3.4	3.6	1.7	1.4	3.0	6.2	5.0	1.9	4.0	1.8	2.4	2.4	..	2.4
Aug	4.3	3.1	3.0	1.9	1.7	2.7	6.1	5.0	3.1	3.8	1.6	2.5	2.3	..	2.3
Sep	3.3	2.0	3.1	1.5	1.4	3.0	5.5	4.5	2.5	2.9	1.2	2.4	1.9	..	1.7
Oct	3.7	0.6	1.7	1.3	1.1	2.6	4.8	3.1	1.5	2.6	1.2	2.4	1.8	..	1.6
Nov	4.4	1.8	0.9	1.6	1.3	2.4	4.7	3.7	2.4	2.7	1.5	2.7	2.1	..	1.9
Dec	4.5	2.3	0.8	1.7	1.4	2.5	4.9	3.7	3.0	2.7	1.4	3.0	2.1	..	1.9
2007 Jan	4.0	2.3	1.2	1.2	1.6	2.6	4.1	2.2	2.8	2.4	1.6	2.7	..	2.1	1.8
Feb	4.4	1.8	0.8	1.4	1.9	2.3	3.9	2.0	2.3	2.5	1.7	2.8	..	2.1	1.8
Mar	4.8	2.4	0.5	1.9	2.4	2.4	3.7	2.1	2.6	2.5	1.6	3.1	..	2.3	1.9
Apr	4.9	2.5	-1.1	1.9	2.2	2.8	3.8	2.0	2.9	2.5	1.6	2.8	..	2.2	1.9
May	5.0	2.3	-1.0	2.0	2.3	2.4	3.9	1.5	3.1	2.4	1.2	2.5	..	2.1	1.9
Jun	5.0	2.3	-0.6	1.8	2.6	2.4	3.9	1.5	3.8	2.5	1.3	2.4	..	2.1	1.9
Jul	5.1	2.0	-0.2	1.4	2.5	2.3	4.1	1.2	4.0	2.3	1.4	1.9	..	2.0	1.8
Aug	5.6	1.9	0.6	1.1	2.1	1.9	5.0	1.2	3.4	2.2	1.2	1.8	..	1.9	1.7
Sep	7.1	2.5	0.9	1.3	2.7	2.0	6.1	1.7	3.6	2.7	1.6	1.8	..	2.2	2.1
Oct	7.6	3.6	1.6	1.6	3.1	2.5	6.9	2.4	5.1	3.6	1.9	2.1	..	2.7	2.6
Nov	7.9	4.0	2.9	1.8*	3.7	2.8	6.8	2.3	5.7	4.1	2.4	2.1	..	3.1*	3.1*
Dec	2.1

Key: - zero or negligible .. Not available * Provisional

† Date of earliest revision † Estimated

1 Published as the CPI in the UK.

2 The EICP (European Index of Consumer Prices) is the official EU aggregate. It covers 15 member states until April 2004, 25 member states from May 2004, and 27 members from Jan 2007, the new member states being integrated using a chain index formula.

The EU 25 annual average for 2004 is calculated from the EU 15 average from January to April and the EU 25 average from May to December.

3 The coverage of the European Union was extended to include Cyprus, Czech Republic, Estonia, Hungary, Latvia, Lithuania, Malta, Poland, Slovakia and Slovenia from 1 May 2004 and Bulgaria and Romania from 1 Jan 2007.

4 The coverage of the Monetary Union Area index was extended to include Greece with effect from Jan 2001.

Sources: National Statistics; Eurostat

	Weights	Index (January 1987=100)						Percentage change over 12 months						Percentage change over 1 month
		2007											2007 Dec	
			2007 Jul	2007 Aug	2007 Sep	2007 Oct	2007 Nov	2007 Dec	2007 Jul	2007 Aug	2007 Sep	2007 Oct		2007 Nov
ALL ITEMS	1 000	206.1	207.3	208.0	208.9	209.7	210.9	3.8	4.1	3.9	4.2	4.3	4.0	0.6
Food and catering	152	182.7	183.5	185.2	187.3	188.8	190.2	3.2	3.3	4.0	4.6	4.8	5.3	0.7
Alcohol and tobacco	95	257.6	257.9	258.2	257.7	257.3	256.9	3.7	3.5	3.6	3.2	3.1	3.0	-0.2
Housing and household expenditure	408	247.2	249.4	251.3	251.9	253.0	254.8	6.8	7.2	6.5	6.2	6.0	5.0	0.7
Personal expenditure	83	131.2	132.2	133.7	134.1	134.3	134.0	1.4	0.7	0.5	0.5	0.4	0.8	-0.2
Travel and leisure	262	184.7	185.2	183.7	184.7	185.4	186.8	0.8	1.0	1.4	2.8	3.1	3.2	0.8
Consumer durables ¹	109	91.0	91.9	93.7	92.8	93.2	94.8	-0.9	-1.2	-1.2	-1.0	-1.4	-2.0	1.7
Seasonal food	19	149.1	152.5	153.2	158.0	159.0	160.5	4.5	7.3	5.9	8.0	4.8	6.4	0.9
Food excluding seasonal	86	164.5	164.7	167.0	168.7	170.6	172.1	2.9	2.6	3.9	4.4	5.4	6.0	0.9
All items excluding seasonal food	981	207.6	208.7	209.4	210.2	211.0	212.2	3.9	4.0	3.9	4.2	4.2	4.0	0.6
All items excluding food	895	213.7	215.0	215.5	216.2	216.9	218.0	3.9	4.2	3.9	4.2	4.2	3.8	0.5
All goods	478	156.2	156.6	157.7	158.1	159.3	160.4	1.2	0.9	1.5	2.4	2.8	2.8	0.7
All services	377	257.8	258.8	258.4	259.9	259.9	261.2	3.7	4.0	3.6	3.2	2.7	2.8	0.5
Other indices														
All items excluding:														
mortgage interest payments (RPIX)	945	199.4	200.1	200.8	201.6	202.4	203.5	2.7	2.7	2.8	3.1	3.2	3.1	0.5
housing	762	182.2	182.9	183.5	184.3	185.1	186.3	2.0	2.0	2.2	2.6	2.6	2.5	0.6
mortgage interest payments and indirect taxes (RPIY) ²		190.1	190.9	191.6	192.3	193.2	194.4	2.6	2.6	2.8	3.0	3.0	3.1	0.6
mortgage interest payments and council tax	905	196.2	197.0	197.7	198.5	199.3	200.5	2.6	2.6	2.8	3.1	3.1	3.1	0.6
mortgage interest payments and depreciation ³	895	192.7	193.3	193.8	194.6	195.4	196.6	2.3	2.3	2.4	2.8	2.8	2.8	0.6
Food	105	162.2	163.0	165.0	167.4	169.1	170.6	3.1	3.4	4.2	5.1	5.3	6.1	0.9
Bread	4	174.3	174.4	180.3	181.7	189.1	195.9	6.5	5.6	8.1	8.9	11.6	14.9	3.6
Cereals	3	146.0	147.1	149.1	149.0	152.7	153.2	1.2	2.2	2.9	3.7	5.5	5.1	0.3
Biscuits and cakes	6	172.9	172.8	172.2	179.4	180.6	183.6	2.4	1.9	1.9	6.2	6.0	7.1	1.7
Beef	4	141.4	141.2	139.8	139.6	140.1	140.1	-0.5	0.8	-1.3	-2.6	-1.6	-1.1	-
Lamb	2	191.0	191.6	186.0	183.3	183.1	186.7	0.5	0.9	-1.9	-3.0	-2.8	-1.9	2.0
of which home-killed lamb	1	195.9	195.1	189.9	185.8	182.6	188.0	1.2	-0.1	-1.0	-2.0	-4.5	-3.3	3.0
imported lamb	1	182.2	184.2	178.4	177.0	179.7	181.4	-0.2	1.9	-2.8	-4.0	-1.0	-0.6	0.9
Pork	1	153.3	153.2	160.6	160.2	159.3	162.4	-4.1	-3.6	3.2	0.3	2.0	3.6	1.9
Bacon	2	181.9	182.1	176.7	190.0	188.9	191.2	-0.7	-1.6	-4.3	1.5	-0.5	0.6	1.2
Poultry	3	111.0	112.6	110.4	116.9	118.9	119.4	-0.4	1.9	3.4	6.7	9.6	8.7	0.4
Other meat	6	148.5	148.5	148.6	150.4	150.6	152.0	1.4	0.3	0.4	1.7	1.5	1.5	0.9
Fish	4	173.7	173.7	174.8	178.4	179.0	176.6	5.4	4.1	4.3	5.5	6.0	3.9	-1.3
of which fresh fish	2	187.0	191.5	188.9	194.6	193.2	190.4	5.8	7.2	4.6	6.3	6.1	5.4	-1.4
processed fish	2	161.1	157.1	161.4	163.2	165.6	163.6	5.2	1.0	4.0	4.7	6.0	2.5	-1.2
Butter	1	171.2	169.8	199.8	203.5	230.4	235.2	0.9	-2.3	15.2	17.2	32.6	35.1	2.1
Oils and fats	1	142.5	141.4	154.5	156.2	154.1	153.7	-1.7	-2.9	7.8	7.9	5.7	5.5	-0.3
Cheese	3	176.6	177.2	182.0	185.2	191.5	196.1	0.9	0.5	3.5	5.4	8.8	11.2	2.4
Eggs	1	181.6	190.8	197.0	214.0	231.3	233.0	11.9	14.4	17.2	26.2	35.7	30.2	0.7
Milk, fresh	5	193.7	194.0	217.8	219.2	220.7	220.0	3.1	3.0	15.7	16.0	16.9	16.4	-0.3
Milk products	4	152.8	153.8	156.0	156.5	161.5	164.7	3.8	4.3	5.5	6.4	9.3	12.0	2.0
Tea	1	161.8	157.5	160.4	161.6	160.1	156.1	2.5	-2.2	-1.2	-0.6	-0.8	-3.3	-2.5
Coffee and other hot drinks	1	124.5	125.8	126.1	122.6	125.3	125.4	7.2	2.0	0.9	-2.1	1.4	-0.4	0.1
Soft drinks	11	201.2	201.1	200.3	200.7	199.5	199.9	4.7	5.3	3.5	3.5	3.0	3.1	0.2
Sugar and preserves	1	163.1	162.0	163.6	164.5	166.8	166.5	4.3	3.3	3.3	3.8	4.3	3.7	-0.2
Sweets and chocolates	10	198.9	200.9	201.6	201.3	203.3	206.2	3.5	3.7	4.0	4.1	5.3	6.7	1.4
Potatoes	5	162.7	163.3	162.5	162.5	166.5	167.4	5.9	8.1	7.1	5.0	3.4	3.3	0.5
of which unprocessed potatoes	2	152.7	151.3	153.9	154.0	155.7	163.0	2.2	9.1	8.8	6.7	3.3	7.2	4.7
potato products	3	162.1	164.2	161.0	161.0	166.4	162.8	7.4	8.6	6.6	4.5	3.8	1.2	-2.2
Vegetables other than potatoes	9	149.9	153.1	151.0	152.5	152.7	156.3	9.0	13.4	10.8	9.9	6.0	9.8	2.4
of which fresh vegetables	7	135.9	139.8	137.1	137.6	136.9	140.2	8.4	14.7	12.0	10.9	5.5	9.9	2.4
processed vegetables	2	189.8	188.7	189.8	195.9	200.6	204.9	10.9	9.1	6.7	7.0	7.9	9.8	2.1
Fruit	7	141.9	144.7	149.7	158.9	160.6	158.6	-0.3	0.0	-0.3	4.5	1.5	1.0	-1.2
of which fresh fruit	6	137.8	141.4	146.7	157.5	159.3	157.3	-0.6	-0.1	-0.5	5.8	1.7	1.3	-1.3
processed fruit	1	152.7	150.1	153.0	150.7	151.6	149.6	1.3	0.1	1.2	-3.1	0.6	-1.1	-1.3
Other foods	10	152.8	152.4	153.8	154.7	154.5	156.4	1.9	0.7	2.1	1.4	1.8	3.2	1.2
Catering	47	253.9	254.4	255.1	256.3	257.2	258.1	3.3	3.2	3.4	3.4	3.5	3.6	0.3
Restaurant meals	25	247.9	248.2	248.8	250.4	250.8	251.3	3.0	2.9	3.3	3.4	3.3	3.2	0.2
Canteen meals	4	312.9	314.0	318.2	318.0	319.0	318.4	4.8	5.3	5.5	5.1	4.6	4.5	-0.2
Take-aways and snacks	18	243.6	244.1	244.5	245.4	247.0	248.5	3.3	3.2	3.2	3.2	3.7	3.9	0.6
Alcoholic drink	66	220.2	220.5	220.8	220.2	219.8	219.3	3.3	3.0	3.1	2.6	2.5	2.3	-0.2
Beer	34	241.8	242.0	242.0	241.1	241.1	241.3	3.9	3.8	3.7	3.0	2.8	2.6	0.1
on sales	29	262.9	262.9	263.4	263.2	263.1	263.9	4.3	4.1	4.2	3.8	3.5	3.5	0.3
off sales	5	150.4	151.4	149.6	146.2	146.8	145.1	1.8	2.4	1.0	-1.9	-1.1	-2.2	-1.2
Wines and spirits	32	192.6	193.1	193.5	193.2	192.5	191.5	2.6	2.2	2.4	2.0	2.2	2.1	-0.5
on sales	18	244.3	244.7	245.2	245.2	245.2	245.4	3.6	3.4	3.4	3.2	2.9	2.8	0.1
off sales	14	158.6	159.2	159.6	158.9	157.5	155.5	1.4	0.6	1.1	0.6	1.1	1.2	-1.3

Key: - zero or negligible

Index date for December: 11 December 2007

1 Consumer durables: Furniture, furnishings, electrical appliances and other household equipment, men's, women's and children's outerwear, footwear, audio-visual equipment, CDs and tapes, toys, photographic and sports goods.

2 The taxes excluded are council tax, VAT, duties, vehicle excise duty, insurance tax and air passenger duty. There are no weights available for RPIY.

3 This series has been constructed using the index for all items excluding mortgage interest payments prior to February 1995.

continued

	Weights	Index (January 1987=100)						Percentage change over 12 months						Percentage change over 1 month
		2007	2007		2007		2007	2007	2007	2007	2007	2007	2007	2007
			Jul	Aug	Sep	Oct								
Tobacco	29	363.8	363.9	364.2	364.3	364.1	363.6	4.8	4.7	4.7	4.7	4.6	4.5	-0.1
Cigarettes	26	371.9	372.0	372.4	372.5	372.3	371.7	4.8	4.7	4.8	4.8	4.7	4.5	-0.2
Other tobacco	3	288.5	288.5	288.6	288.8	288.9	288.6	4.3	4.3	4.3	4.3	4.4	4.2	-0.1
Housing	238	332.7	337.0	338.4	339.6	340.6	341.5	10.1	11.0	9.9	9.9	9.9	8.8	0.3
Rent	53	289.8	289.6	289.9	291.2	291.7	291.6	3.3	3.2	3.3	3.7	3.7	3.6	-
Mortgage interest payments	55	391.3	406.8	409.5	411.3	413.9	416.5	26.2	30.2	24.9	24.5	24.4	19.8	0.6
Depreciation (Jan 1995 = 100)	50	296.8	300.3	302.9	304.3	305.5	305.5	10.0	10.0	9.7	9.3	9.3	8.7	-
Council tax and rates	40	292.0	292.0	292.0	292.0	292.0	292.0	4.0	4.0	4.0	4.0	4.0	4.0	-
Water and other charges	12	377.2	377.2	377.2	377.2	377.2	377.2	6.5	6.5	6.5	6.5	6.5	6.5	-
Repairs and maintenance charges	12	329.6	330.4	331.1	333.5	334.6	335.4	5.2	5.1	5.0	5.2	5.4	5.2	0.2
Do-it-yourself materials	9	166.5	166.6	167.3	167.3	167.1	168.4	5.1	4.3	3.9	4.1	3.7	3.7	0.8
Dwelling insurance and ground rent	7	282.7	289.2	292.4	291.7	292.1	301.7	1.5	3.3	4.2	4.5	4.3	7.9	3.3
Fuel and light	39	208.2	206.2	206.1	206.3	208.1	208.3	2.0	0.3	-1.0	-3.8	-5.0	-6.5	0.1
Coal and solid fuels	1	198.2	198.4	200.8	206.5	210.5	214.7	7.9	7.1	7.0	4.7	5.5	7.6	2.0
Electricity	18	197.2	196.2	195.9	195.8	195.8	195.8	3.8	2.6	1.1	-1.5	-3.4	-4.5	-
Gas	18	216.5	213.4	211.8	211.0	211.1	211.2	1.8	-0.8	-3.9	-8.7	-11.6	-13.2	-
Oil and other fuels	2	267.1	262.4	276.3	285.3	319.1	320.4	-6.4	-6.3	3.4	14.4	33.0	28.5	0.4
Household goods	66	147.7	148.3	151.7	149.6	151.0	156.0	1.7	1.4	1.9	2.4	2.1	0.9	3.3
Furniture	23	166.8	168.5	177.0	171.1	175.7	187.0	2.7	3.0	4.5	4.3	4.3	-0.4	6.4
Furnishings	11	159.0	161.7	163.8	161.9	159.0	168.0	2.0	1.6	3.5	2.4	0.4	3.4	5.7
Electrical appliances	8	72.7	72.3	73.6	73.1	73.4	72.7	-3.8	-5.0	-6.8	-2.1	-1.1	-0.8	-1.0
Other household equipment	4	143.9	145.6	145.2	145.8	145.2	146.7	4.7	4.0	2.6	3.9	1.9	3.5	1.0
Household consumables	13	162.1	160.7	161.1	161.4	162.0	162.2	1.4	0.7	0.6	0.8	0.7	0.6	0.1
Pet care	7	175.2	173.7	175.4	175.8	178.9	179.9	2.8	2.4	2.5	2.6	4.4	4.7	0.6
Household services	65	194.4	196.2	198.0	201.3	201.8	202.0	2.6	3.5	3.4	2.4	2.9	2.9	0.1
Postage	1	212.7	212.7	212.7	212.7	212.7	212.7	12.6	12.6	6.2	6.2	6.2	6.2	-
Telephones, telemessages, etc	22	83.8	85.8	85.5	85.1	85.2	85.3	-5.3	-2.4	-2.6	-4.0	-3.6	-3.3	0.1
Domestic services	14	303.8	304.8	305.9	307.9	309.3	309.7	4.4	4.4	4.2	4.4	4.6	4.4	0.1
Fees and subscriptions	28	292.2	292.7	298.9	310.4	311.1	311.4	7.7	7.5	7.6	6.4	7.0	7.0	0.1
Clothing and footwear	44	91.6	92.8	94.5	94.5	94.7	94.0	0.1	-0.9	-1.0	-1.5	-1.7	-1.1	-0.7
Men's outerwear	9	93.8	94.9	96.1	96.4	96.9	96.8	0.3	0.1	-1.7	-1.1	-1.3	-0.7	-0.1
Women's outerwear	15	64.1	65.7	67.9	67.3	67.6	66.3	-1.7	-3.1	-2.7	-4.7	-4.2	-3.9	-1.9
Childrens' outerwear	5	87.9	87.8	89.9	91.5	91.7	92.2	-0.1	-1.8	1.0	2.0	1.3	1.5	0.5
Other clothing	6	148.2	149.6	150.9	150.1	150.7	150.6	1.4	0.5	0.3	0.3	-0.3	-0.2	-0.1
Footwear	9	109.4	110.3	110.7	111.1	110.8	109.9	1.8	1.8	0.4	0.7	0.4	1.5	-0.8
Personal goods and services	39	214.8	215.2	216.1	217.3	217.4	218.1	3.0	2.5	2.5	2.9	2.9	2.9	0.3
Personal articles	11	138.6	139.4	140.7	140.2	140.8	141.7	3.4	2.7	2.6	2.4	2.8	2.6	0.6
Chemists goods	15	192.2	192.1	192.4	194.2	193.4	193.9	1.5	1.0	0.9	1.5	1.2	1.6	0.3
Personal services	13	372.1	372.4	373.2	376.8	377.8	378.0	4.3	4.2	4.4	4.9	4.9	4.8	0.1
Motoring expenditure	133	189.9	189.4	188.6	190.0	192.5	193.3	-0.3	-0.4	1.1	3.5	4.7	4.7	0.4
Purchase of motor vehicles	53	102.9	102.1	101.8	101.4	101.8	100.8	-3.0	-3.3	-3.5	-3.6	-3.0	-3.5	-1.0
Maintenance of motor vehicles	20	309.8	311.4	311.8	312.4	313.3	314.3	5.2	5.5	5.2	4.8	4.3	4.3	0.3
Petrol and oil	36	280.6	280.0	276.7	284.2	295.1	301.4	-1.4	-2.2	3.0	11.7	16.5	16.4	2.1
Vehicle tax and insurance	24	297.5	297.9	298.5	299.6	299.4	300.7	3.7	5.0	5.4	6.1	4.4	5.4	0.4
Fares and other travel costs	20	259.2	265.8	242.7	244.3	237.0	249.9	8.7	10.7	6.0	7.1	4.8	6.6	5.4
Rail fares	5	263.6	265.0	264.8	263.3	263.3	263.2	4.7	4.3	6.8	6.3	4.9	5.5	-
Bus and coach fares	4	276.3	277.4	277.0	274.5	275.3	277.0	8.8	8.9	7.7	5.9	5.3	5.6	0.6
Other travel costs	11	236.9	246.2	210.7	214.5	203.0	222.5	9.6	12.9	4.7	7.6	4.5	6.9	9.6
Leisure goods	41	88.7	89.2	89.1	88.9	88.6	89.1	-3.1	-2.6	-3.0	-2.5	-3.3	-3.4	0.6
Audio-visual equipment	8	14.5	14.5	14.2	14.1	13.9	13.9	-15.2	-15.7	-17.4	-16.1	-17.8	-17.8	-
CDs and tapes	5	100.3	100.5	100.7	98.4	100.4	102.9	1.0	4.3	3.5	1.0	1.2	1.1	2.5
Toys, photographic and sports goods	12	85.7	86.8	87.1	87.3	86.7	86.8	-3.8	-3.7	-2.9	-2.6	-2.7	-2.9	0.1
Books and newspapers	10	259.0	260.8	262.5	263.1	261.5	262.9	3.8	4.7	3.9	4.4	3.3	3.3	0.5
Gardening products	6	144.8	144.8	144.9	145.1	145.1	146.4	0.5	0.6	0.9	1.7	0.6	0.8	0.9
Leisure services	68	274.9	276.1	278.1	279.4	279.7	280.3	2.8	3.3	3.3	3.3	3.3	3.3	0.2
Television licences and rentals	11	167.7	167.7	167.7	169.7	169.7	169.7	1.8	1.8	1.8	2.2	2.2	2.1	-
Entertainment and other recreation	16	367.2	371.0	379.8	379.5	379.6	380.7	4.5	6.5	5.9	5.0	5.4	5.1	0.3
Foreign holidays (Jan 1993 = 100)	34	172.6	173.1	173.5	174.5	174.8	175.3	2.3	2.2	2.6	2.9	2.6	2.9	0.3
UK holidays (Jan 1994 = 100)	7	170.5	171.4	171.8	171.9	172.0	172.0	3.4	3.4	3.8	3.4	3.4	3.1	-

Key: - zero or negligible

Source: National Statistics

9 RPI goods and services¹: the latest three years

Percentage change over 12 months

	Goods components					Services components				
	Food	Alcohol & tobacco	Petrol & oil ²	Other goods ³	All goods	Rent	Utilities ⁴	"Shop" services ⁵	"Non-shop" services ⁶	All services
Weights										
2007	CZGZ 105	CBVW 95	DOHB 38	DOHC 240	DOHD 478	CZXD 53	DOHE 76	DOHF 133	DOHG 115	DOHH 377
Monthly										
2004 Dec	CCYY -0.1	CZBK 2.4	DOGQ 9.1	DOGI -2.0	DOGD 0.1	CZCQ 2.8	DOGF 5.8	DOGG 4.1	DOGH 3.7	DOGE 4.1
2005 Jan	0.3	2.7	5.2	-2.8	-0.5	3.0	6.4	4.2	2.7	4.0
Feb	0.8	3.0	6.4	-2.9	-0.4	3.1	5.9	4.3	2.3	3.8
Mar	1.4	2.4	8.1	-2.2	0.2	3.1	5.4	4.3	2.6	3.8
Apr	0.8	2.6	11.4	-2.5	0.1	3.6	5.8	4.3	2.7	4.0
May	1.3	2.7	5.5	-2.5	-0.1	3.6	5.7	4.3	3.0	4.1
Jun	2.0	2.7	6.6	-2.3	0.2	3.5	5.8	4.3	2.7	4.0
Jul	1.4	2.7	11.3	-1.7	0.7	3.8	5.8	4.3	2.7	4.0
Aug	1.7	2.5	13.7	-2.0	0.8	3.8	5.9	4.1	2.0	3.7
Sep	1.5	2.5	18.4	-1.9	1.1	3.8	6.5	4.4	2.0	3.9
Oct	1.0	2.7	14.0	-1.7	0.9	3.2	7.4	4.5	2.1	4.1
Nov	1.3	2.9	8.6	-1.4	0.7	3.2	7.7	4.6	1.8	4.1
Dec	1.1	2.9	8.0	-1.3	0.7	3.2	7.3	4.6	0.6	3.7
2006 Jan	0.8	2.8	13.6	-1.4	1.0	3.0	7.2	4.3	1.3	3.8
Feb	0.8	2.5	12.9	-1.1	1.1	3.0	7.4	4.2	1.2	3.8
Mar	-0.5	3.0	10.1	-1.2	0.6	3.0	8.6	4.1	1.7	4.1
Apr	0.2	2.7	9.6	-1.3	0.7	2.8	9.9	4.2	2.3	4.6
May	0.9	2.7	13.8	-0.8	1.4	2.8	11.7	4.1	1.5	4.6
Jun	1.5	3.2	12.4	-0.5	1.6	2.9	12.9	4.1	1.8	5.0
Jul	2.7	3.0	10.7	-0.9	1.5	3.0	13.8	4.1	1.5	5.0
Aug	2.9	3.4	7.6	-0.2	1.8	3.0	13.9	4.0	1.7	5.1
Sep	3.5	3.4	-3.4	0.4	1.2	2.9	14.2	4.0	2.3	5.3
Oct	4.2	3.3	-7.6	-	0.8	2.9	15.1	4.2	3.3	5.8
Nov	4.5	3.2	-4.6	0.1	1.2	3.0	15.0	4.1	3.9	6.0
Dec	4.1	3.2	0.6	0.4	1.8	3.0	15.0	4.1	4.0	6.1
2007 Jan	3.7	3.6	-2.6	-0.3	1.1	3.3	14.2	4.2	4.6	6.1
Feb	4.0	4.0	-4.3	-	1.2	3.2	13.7	4.3	5.4	6.3
Mar	5.1	4.1	-1.7	0.5	2.0	3.2	12.2	4.4	4.8	5.9
Apr	5.6	4.5	-1.7	0.6	2.1	3.1	8.5	4.1	4.2	4.9
May	4.8	4.1	-2.0	0.6	1.9	3.2	5.3	4.1	5.1	4.6
Jun	4.8	3.7	0.3	0.8	2.2	3.3	3.0	4.2	5.0	4.1
Jul	3.1	3.7	-1.8	-0.2	1.2	3.3	1.3	3.9	5.1	3.7
Aug	3.4	3.5	-2.4	-0.5	0.9	3.2	1.3	4.2	5.8	4.0
Sep	4.2	3.6	2.9	-0.6	1.5	3.3	0.3	4.1	5.0	3.6
Oct	5.1	3.2	11.7	-0.5	2.4	3.7	-2.0	4.1	5.1	3.2
Nov	5.3	3.1	17.4	-0.6	2.8	3.7	-3.1	4.2	4.5	2.7
Dec	6.1	3.0	17.0	-0.9	2.8	3.6	-3.7	4.1	5.3	2.8

Key: - zero or negligible

1 All components of the RPI are included in the above breakdown with the exception of mortgage interest payments, council tax and depreciation.

2 Including fuel oil.

3 The 'other goods' category comprises DIY materials, coal & solid fuels, household goods, clothing & footwear, personal articles, chemists goods, purchase of motor vehicles and leisure goods.

4 The 'utilities' category comprises water, electricity, gas, postage, telephone charges and rail fares.

5 The 'shop services' category comprises catering, repairs & maintenance charges, domestic services, personal services, maintenance of motor vehicles, TV licence & rentals and entertainment & recreation charges.

6 The 'non-shop services' category comprises dwelling insurance & ground rent, fees and subscriptions, vehicle tax and insurance, bus & coach fares, other travel costs, foreign holidays and UK holidays.

Source: National Statistics

10 A breakdown of the differences between CPI and RPI

	Difference between annual rates CPI - RPI		Breakdown of differences (unrounded figures) ¹						
	rounded figures	unrounded figures	housing components excluded from CPI			other housing components	other differences in coverage of goods and services	formula effect ²	other differences including weights ³
			total	mortgage interest payments					
	D7G2	D7G3	D7G4	D7G5	D7FU	D7FV	D7FW	D7FX	
2002 Dec	-1.2	-1.27	-1.33	-0.18	-1.15	0.40	-0.47	0.12	
2003 Jan	-1.6	-1.61	-1.41	-0.19	-1.22	0.24	-0.42	-0.01	
Feb	-1.6	-1.60	-1.41	-0.20	-1.21	0.24	-0.43	-	
Mar	-1.6	-1.59	-1.28	-0.11	-1.17	0.18	-0.43	-0.07	
Apr	-1.7	-1.67	-1.44	-0.11	-1.32	0.12	-0.44	0.08	
May	-1.7	-1.73	-1.39	-0.12	-1.26	0.05	-0.44	0.05	
Jun	-1.8	-1.82	-1.32	-0.12	-1.20	-0.06	-0.46	0.01	
Jul	-1.8	-1.73	-1.24	-0.12	-1.13	-0.24	-0.43	0.19	
Aug	-1.5	-1.56	-1.08	0.01	-1.09	-0.31	-0.41	0.24	
Sep	-1.4	-1.35	-1.06	0.01	-1.07	0.01	-0.44	0.14	
Oct	-1.2	-1.29	-0.99	0.01	-0.99	0.04	-0.44	0.10	
Nov	-1.2	-1.17	-0.99	-0.02	-0.97	0.19	-0.43	0.07	
Dec	-1.5	-1.51	-1.11	-0.20	-0.91	-0.22	-0.42	0.23	
2004 Jan	-1.2	-1.19	-1.07	-0.21	-0.86	0.02	-0.42	0.28	
Feb	-1.2	-1.23	-1.10	-0.21	-0.89	0.05	-0.43	0.26	
Mar	-1.5	-1.47	-1.47	-0.48	-0.99	0.07	-0.41	0.34	
Apr	-1.4	-1.36	-1.32	-0.50	-0.82	0.08	-0.43	0.30	
May	-1.3	-1.30	-1.36	-0.50	-0.86	0.13	-0.44	0.38	
Jun	-1.4	-1.46	-1.59	-0.69	-0.90	0.14	-0.43	0.42	
Jul	-1.6	-1.66	-1.82	-0.88	-0.94	0.15	-0.42	0.43	
Aug	-1.9	-1.89	-1.96	-1.03	-0.93	0.18	-0.47	0.36	
Sep	-2.0	-1.97	-2.13	-1.18	-0.95	0.20	-0.45	0.42	
Oct	-2.1	-2.07	-2.17	-1.19	-0.99	0.22	-0.46	0.34	
Nov	-1.9	-1.98	-2.11	-1.19	-0.92	0.24	-0.47	0.36	
Dec	-1.8	-1.84	-1.91	-1.00	-0.91	0.24	-0.49	0.32	
2005 Jan	-1.6	-1.55	-1.94	-1.03	-0.92	0.23	-0.48	0.65	
Feb	-1.5	-1.50	-1.92	-1.03	-0.89	0.23	-0.51	0.69	
Mar	-1.3	-1.32	-1.64	-0.86	-0.79	0.22	-0.53	0.62	
Apr	-1.3	-1.22	-1.54	-0.86	-0.68	0.25	-0.52	0.59	
May	-1.0	-1.07	-1.43	-0.85	-0.58	0.27	-0.50	0.60	
Jun	-0.9	-0.87	-1.18	-0.67	-0.51	0.29	-0.52	0.54	
Jul	-0.6	-0.57	-0.89	-0.48	-0.40	0.31	-0.53	0.55	
Aug	-0.4	-0.37	-0.84	-0.48	-0.36	0.33	-0.49	0.64	
Sep	-0.2	-0.20	-0.43	-0.17	-0.27	0.30	-0.52	0.45	
Oct	-0.2	-0.17	-0.37	-0.17	-0.20	0.30	-0.52	0.42	
Nov	-0.3	-0.29	-0.36	-0.16	-0.21	0.27	-0.52	0.32	
Dec	-0.3	-0.30	-0.35	-0.16	-0.19	0.28	-0.51	0.29	
2006 Jan	-0.5	-0.45	-0.29	-0.15	-0.14	0.30	-0.48	0.02	
Feb	-0.4	-0.39	-0.32	-0.15	-0.17	0.30	-0.51	0.14	
Mar	-0.6	-0.51	-0.36	-0.16	-0.20	0.32	-0.55	0.08	
Apr	-0.6	-0.52	-0.33	-0.14	-0.19	0.32	-0.51	-0.01	
May	-0.8	-0.72	-0.32	-0.11	-0.20	0.32	-0.54	-0.19	
Jun	-0.8	-0.75	-0.26	-0.09	-0.17	0.31	-0.52	-0.27	
Jul	-0.9	-0.86	-0.25	-0.09	-0.16	0.28	-0.54	-0.35	
Aug	-0.9	-0.95	-0.25	-0.08	-0.17	0.24	-0.54	-0.39	
Sep	-1.2	-1.22	-0.71	-0.48	-0.23	0.22	-0.56	-0.17	
Oct	-1.3	-1.23	-0.74	-0.49	-0.25	0.24	-0.55	-0.17	
Nov	-1.2	-1.20	-0.73	-0.48	-0.24	0.24	-0.55	-0.16	
Dec	-1.4	-1.46	-0.91	-0.68	-0.24	0.23	-0.56	-0.22	
2007 Jan	-1.5	-1.53	-1.01	-0.72	-0.29	0.23	-0.59	-0.16	
Feb	-1.8	-1.78	-1.21	-0.91	-0.30	0.19	-0.55	-0.21	
Mar	-1.7	-1.75	-1.21	-0.90	-0.31	0.26	-0.57	-0.24	
Apr	-1.7	-1.77	-1.21	-0.91	-0.30	0.21	-0.60	-0.17	
May	-1.8	-1.79	-1.28	-0.94	-0.33	0.19	-0.59	-0.11	
Jun	-2.0	-2.04	-1.49	-1.13	-0.36	0.21	-0.64	-0.12	
Jul	-1.9	-2.00	-1.65	-1.17	-0.47	0.23	-0.54	-0.05	
Aug	-2.3	-2.29	-1.87	-1.38	-0.49	0.24	-0.57	-0.10	
Sep	-2.1	-2.21	-1.62	-1.15	-0.46	0.28	-0.60	-0.27	
Oct	-2.1	-2.15	-1.54	-1.12	-0.41	0.28	-0.60	-0.30	
Nov	-2.2	-2.20	-1.52	-1.12	-0.40	0.29	-0.59	-0.38	
Dec	-1.9	-1.95	-1.30	-0.91	-0.39	0.31	-0.55	-0.41	

1 The differences due to housing, coverage and formula effect are all calculated independently and are not additive.

Source: National Statistics

2 Difference due to use of different formulae to aggregate prices at the most basic level.

3 This difference is derived as a residual.

Chart for Table 1 – December 2007
CPI RPI and Other Related Indices

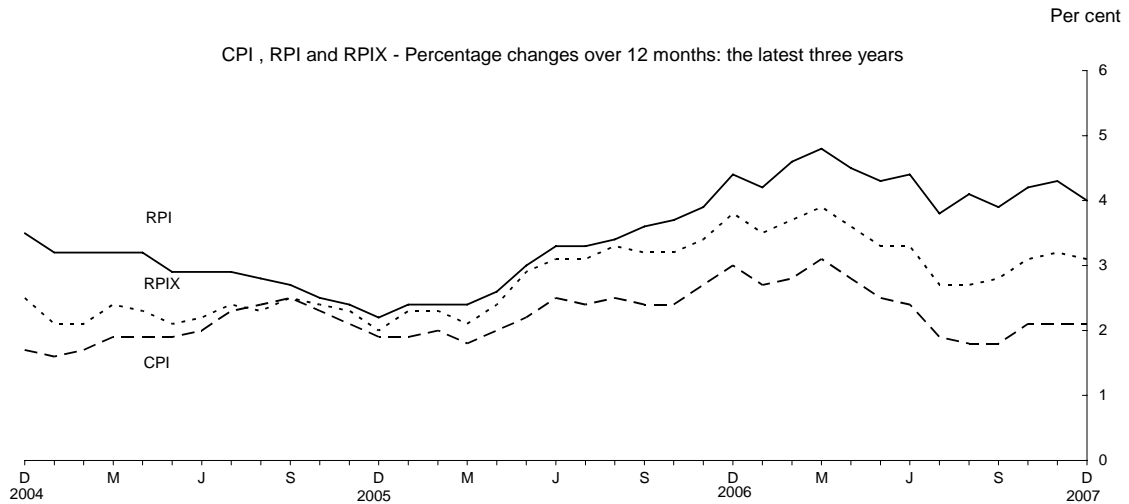


Chart for Table 6 – December 2007
CPI Goods and Services

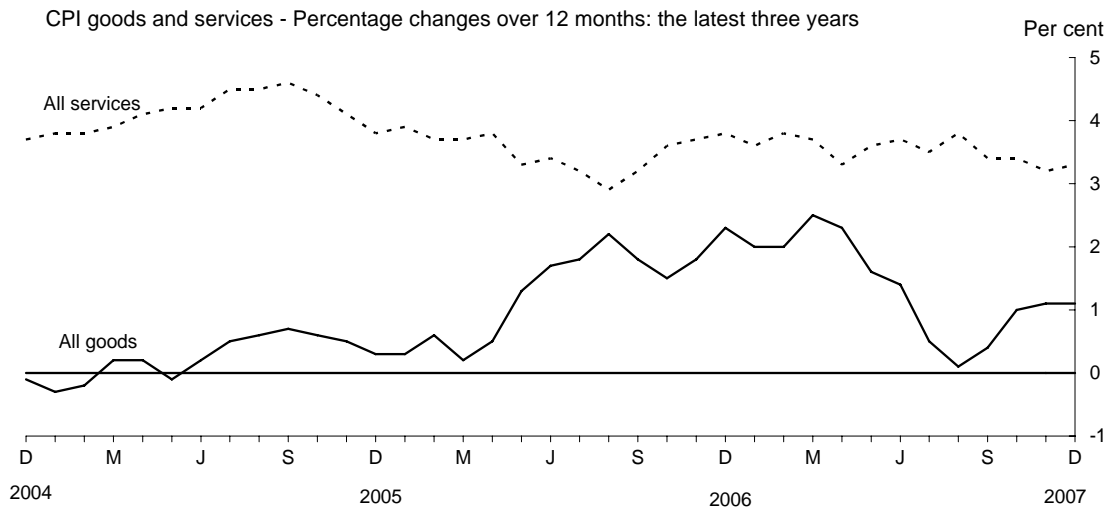


Chart for Table 9 – December 2007
RPI Goods and Services

