

## Business investment

### Provisional results – 3<sup>rd</sup> quarter 2009



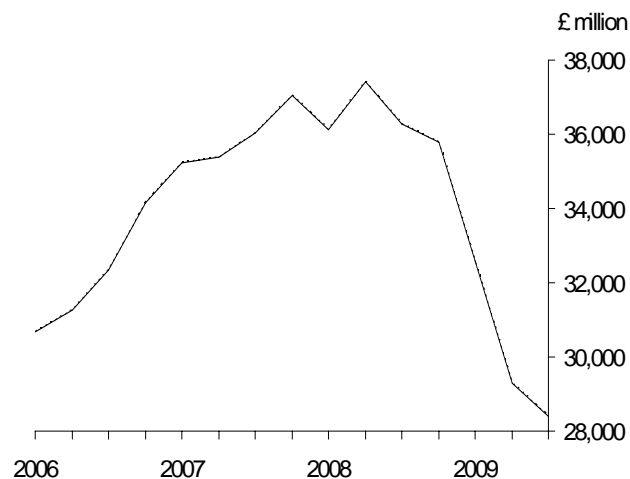
**Date:** 24 November 2009

**Coverage:** United Kingdom **Theme:** The Economy

Business investment, measured in chain volume terms seasonally adjusted (CVMSA), for the third quarter of 2009 is estimated to have fallen by 3.0 per cent from the previous quarter and is 21.7 per cent lower than the third quarter of 2008. The third quarter of 2009 figure is £28,393 million.

The provisional estimate of business investment (CVMSA) by private and public sector manufacturing for the third quarter is estimated to have fallen by 9.5 per cent since the previous quarter and by 28.9 per cent since the third quarter of 2008. The third quarter of 2009 figure is £2,581 million.

**Business investment levels**  
Chained volume measures, reference year 2005 seasonally adjusted



### Business Investment

	Total manufacturing	Non-manufacturing			Public corporations	Business investment
		Other production	Construction	Services		
<i>Chained volume measures, reference year 2005 seasonally adjusted: £ million</i>						
2006 Q4	3,516	3,515	885	25,319	931	34,166
2007 Q1	3,728	3,487	883	26,243	885	35,226
Q2	3,605	3,762	830	26,244	931	35,372
Q3	3,576	4,104	921	26,464	958	36,023
Q4	3,772	4,351	895	27,001	1,024	37,043
2008 Q1	3,473	3,984	918	26,767	993	36,135
Q2	3,631	4,348	834	27,573	1,034	37,419
Q3	3,632	4,306	720	26,558	1,059	36,275
Q4	3,570	4,189	560	26,395	1,073	35,788
2009 Q1	3,404	4,028	506	23,529	1,132	32,598
Q2	2,853	4,624	484	20,273	1,045	29,278
Q3	2,581	4,538	481	19,825	968	28,393

Within private sector non-manufacturing, the provisional estimate of business investment (CVMSA) in services shows that the third quarter of 2009 fell by 2.2 per cent, while other production fell by 1.9 per cent and construction fell by 0.6 per cent since the previous quarter. Compared with the third quarter of 2008, services are estimated to have fallen by 25.4 per cent, while construction fell by 33.2 per cent and other production is estimated to have risen by 5.4 per cent. The latest quarterly figures are £4,538 million for other production, £481 million for construction and £19,825 million for services.

The provisional estimate of business investment (CVMSA) by non-manufacturing public corporations is estimated to have fallen by 7.4 per cent since the previous quarter and a fall by 8.6 per cent since the third quarter of 2008. The third quarter figure is £968 million.

More detailed figures, including estimates of business investment at current prices and measured in chain volume terms for seasonally and non-seasonally adjusted are shown in Tables 1 to 7.

### **Investment in computer software and hardware**

The Office for National Statistics collects information on computer software acquisitions and computer hardware acquisitions and disposals separately from other capital equipment. These data, first collected separately at the beginning of 2001, are presented below. Only the private sector is covered and the estimates are based on the information reported to us in the quarterly capital expenditure inquiry.

This data is collected in recognition of the increasing importance of this category of investment and to meet the national and international user interest in this area. ONS does not seasonally adjust these data, or measure them in chained volume terms, as the short length of time series might affect the quality of such outputs.

The methodological improvements for own account software that have been incorporated in this release do not extend to hardware and purchased software.

As a result, these separate estimates for software and hardware will continue to be published within this release.

## Acquisition of computer software

Includes all expenditure on computer software to be used for more than one year. This includes the purchase or development of large databases and license payments for the use of software.

Software produced for own use should be valued at production cost and included only if its useful life is at least one year. **If software and hardware are purchased together and the components cannot be separated, then the purchase is recorded as hardware.**

**Computer software investment (acquisition) by industry<sup>1</sup>**  
£ million

	Non-manufacturing						Total private sector computer software investment
	Private sector					Total	
	Private sector manufacturing	Other production	Construction	Distribution services	Other services		
Current prices not seasonally adjusted							
2007	653	319	111	1017	4,214	5,661	6,314
2008	645	305	98	969	4,493	5,865	6,510
2006 Q4	185	100	53	205	1,131	1,489	1,674
2007 Q1	135	67	28	327	1,044	1,466	1,601
2007 Q2	143	76	23	231	1,016	1,346	1,489
2007 Q3	179	71	40	224	901	1,236	1,415
2007 Q4	196	105	20	235	1,253	1,613	1,809
2008 Q1	148	78	26	225	1,200	1,529	1,677
2008 Q2	172	51	28	217	1,053	1,349	1,521
2008 Q3	144	79	25	236	1,111	1,451	1,595
2008 Q4	198	93	20	265	1,141	1,519	1,717
2009 Q1	144	87	16	316	956	1,375	1,519
2009 Q2	122	82	15	193	823	1,113	1,235
2009 Q3 <sup>2</sup>	120	122	23	188	811	1,144	1,264

1. Data summarised in the table refers only to private sector data as collected through the quarterly capital expenditure inquiry.
2. Provisional figures.

## Acquisition of computer hardware

Includes the purchase of software purchased as part of a package with associated hardware.

### Computer hardware investment (acquisition less disposal) by industry<sup>1</sup>

£ million

	Non-manufacturing						Total private sector computer hardware investment
	Private sector manufacturing	Private sector					
		Other production	Construction	Distribution services	Other services	Total	
Current prices not seasonally adjusted							
2007	585	159	181	1,105	4,582	6,027	6,612
2008	542	288	137	993	4,628	6,046	6,588
2006 Q4	152	63	45	270	1,239	1,617	1,769
2007 Q1	131	37	49	313	1,338	1,737	1,868
2007 Q2	139	20	46	238	980	1,284	1,423
2007 Q3	158	46	47	262	1,104	1,459	1,617
2007 Q4	157	56	39	292	1,160	1,547	1,704
2008 Q1	130	52	39	279	1,195	1,565	1,695
2008 Q2	136	67	32	226	997	1,322	1,458
2008 Q3	128	86	32	234	1,196	1,548	1,676
2008 Q4	148	83	35	240	1,284	1,642	1,790
2009 Q1	85	63	22	309	1,087	1,481	1,566
2009 Q2	91	41	41	193	625	900	991
2009 Q3 <sup>2</sup>	73	80	12	216	870	1,178	1,251

1. Data summarised in the table refers only to private sector data as collected through the quarterly capital expenditure inquiry.

2. Provisional figures.

The tables summarise the data collected. It is important to note that these are early data. Data from longer period will be required before the quality can be fully assessed and the implications of these data can be judged.

The provisional estimate of the total computer software investment by the private sector, at current prices not seasonally adjusted (CPNSA), for the third quarter of 2009 is £1,264 million. The provisional estimate of total computer hardware acquisitions less disposals by the private sector, at current prices not seasonally adjusted (CPNSA), for the third quarter of 2009 is £1,251 million. The estimates suggest that for the third quarter of 2009 about 8¼ per cent of private sector business investment was on computer software and hardware – about 4½ per cent on software and 4¼ per cent on hardware. Investment in computer software and hardware in the manufacturing sector is about 7 per cent of total investment, and about 10½ per cent of total investment in the service sector.

## Background Notes

1. Industries are sampled on the basis of the Standard Industrial Classification 2003 (SIC 03). The sectors cover the following divisions:

Other			
Production	-	divisions	01 to 14 & 40 to 41
Manufacturing	-	divisions	15 to 37
Construction			
Services (Distribution)	-	division	45
Services (Other)	-	divisions	50 to 52
	-	divisions	55 to 93

2. The reference year for all chained volume measures is 2005.
3. The figures cover acquisitions less disposals of vehicles and of other capital equipment together with expenditure on leased assets and new building work. Spending on land and existing buildings is excluded.
4. The private sector estimates exclude expenditure on dwellings.

## Revisions

5. In line with the revision policy used for national accounts this month, this publication includes no revisions.
6. In April 2005 nuclear reactors were transferred from British Nuclear Fuels plc (BNFL) to the Nuclear Decommissioning Authority (NDA). BNFL is classified as a public corporation in National Accounts and the NDA as a central government body. The capital formation estimates in this release reflect this transfer from the public corporations manufacturing category. A more detailed explanation about the transfer can be found in the December 2006 Business Investment Release. This can be found at:  
<http://www.statistics.gov.uk/StatBase/Product.asp?vlnk=171&Pos=&ColRank=1&Rank=422>
7. Investment in the railway industry by the infrastructure company Network Rail is in the public corporations (non –manufacturing) series for the fourth quarter of 2002 and the first quarter of 2003 and the private sector services for all subsequent

quarters. More information about the classification of this company can be found via this link:

[http://www.statistics.gov.uk/about/Methodology\\_by\\_theme/rail\\_network/default.asp](http://www.statistics.gov.uk/about/Methodology_by_theme/rail_network/default.asp)

8. One indication of the reliability of the key indicators can be obtained by monitoring the size of revisions. The tables below record the size and pattern of revisions, which have occurred over the last five years. Please note that these indicators only report summary measures for revisions. The revised data may itself be subject to sampling or other sources of error. A statistical test has been applied to the average revision to find out if it is statistically significant different from zero. An asterisk (\*) shows if the test is significant. Details about this revisions material can be found at:

<http://www.statistics.gov.uk/cci/article.asp?ID=793>

A more detailed analysis of GDP and its components, including GFCF was published on 13 December 2005 within Economic Trends. This material can be found at:

<http://www.statistics.gov.uk/cci/article.asp?ID=1289>

9. Table 1 below shows the revisions between the provisional and revised estimates of growth in total business investment and total manufacturing investment. These are the estimates published towards the end of the second and third months respectively, after the end of the quarter. These are called month 2 and month 3 estimates in the material below. The analysis of revisions between month 2 and month 3 uses estimates published from September 2004 (for 2004q3) to July 2009 (for 2009 q2).

**Table 1: Revisions to month 2 estimates of business investment and total manufacturing investment growth.**

	Growth in latest provisional estimate (per cent)	Revisions between month 2 and month 3 estimates of business investment and total manufacturing investment growth (quarterly, CVMSA)	
		Average over the last five years	Average over the last five years without regard to sign (average absolute revision)
Total business investment	-3.0	0.37	0.83
Total manufacturing	-9.5	*1.63	*2.83

\*Statistical tests produced evidence that the mean revision is significantly different from zero.

Table 2 below shows the revisions between the month 3 estimates of growth in business investment and total manufacturing investment and the equivalent estimates published three years later. The table covers revised estimates of business investment and total manufacturing investment first published from September (for 2001 q3) to July 2006 (for 2006 q2).

**Table 2: Revisions to month 3 estimates of growth in business investment and total manufacturing investment.**

	Growth in latest revised estimate (per cent)	Revisions between the first month 3 publication and estimates three years later.	
		Average over the last five years	Average over the last five years without regard to sign (average absolute revision)
Total business investment growth (quarterly, CVMSA)	-10.2	0.01	2.14
Total manufacturing investment growth (quarterly, CVMSA)	-16.2	0.26	3.80

Statistical tests produced no evidence that the mean revision is significantly different from zero.

Spreadsheets giving revisions triangles (real time databases) of estimates for 1996q1 to 2009q2, and the calculations behind the averages in both tables are available on the National Statistics website at:

<http://www.statistics.gov.uk/Statbase/Product.asp?vlnk=171>

### **Own-account software**

10. A summary of the main findings of the OECD task force on computer software is presented in Ahmad (2003: Measuring investment in software, STI working paper, OECD). ONS's implementation of this method is described by Chamberlin, Clayton and Farooqui (New measures of UK private sector software investment). This article can be found in Economic & Labour Market Review May 2007 edition at <http://www.statistics.gov.uk/StatBase/Product.asp?vInk=14692&Pos=&ColRank=1&Rank=240>

The new methodology is supply-side approach whereby investment in own-account software is measured using the costs of production. This previous method was based on an historic demand-side survey, updated using the assumption about labour input, by sector. It was recognised, however, that these estimates were likely to understate the activity actually taking place

.....

**Next publication:** Friday 18 December 2009

**Issued by:** Office for National Statistics, Government Buildings, Cardiff Road, Newport NP10 8XG

#### **Media contact:**

Tel        **Media Relations Office 0845 6041858**  
             **Emergency on-call 07867 906553**  
E-mail    **press.office@ons.gsi.gov.uk**

#### **Statistical contact:**

Tel        **Bruce Omundsen 01633 456 406**  
E-mail    **bruce.omundsen@ons.gov.uk**

#### **Website:**

[www.ons.gov.uk](http://www.ons.gov.uk)

# 1 Business Investment<sup>2</sup> by Industry

## Chained volume measures

Reference year 2005, £ million<sup>1</sup>

	Manufacturing			Non-manufacturing				Public Corporations	Total	Total Business Investment
	Private <sup>3</sup> Sector	Public <sup>6</sup> Corporations	Total	Private Sector <sup>3</sup>						
				Other <sup>4</sup> Production	Construction	Distribution Services	Other Services			
2005	14 441	15 447	29 888	10 472	3 000	18 834	71 561	4 229	108 096	137 984
2006	14 283	-275	14 008	12 464	3 491	18 474	75 985	4 015	114 429	128 437
2007	14 795	-114	14 681	15 704	3 529	20 679	85 273	3 798	128 983	143 664
2008	14 299	7	14 306	16 827	3 032	18 966	88 327	4 159	131 310	145 617
Not seasonally adjusted										
	INKL	APIA	APIL	IOCQ	KWOC	IOYO	JZKH	APII	APIP	NPEN
2005 Q3	3 647	-73	3 576	2 631	829	4 656	18 413	1 114	27 643	31 219
Q4	4 158	-72	4 087	2 413	793	4 817	18 919	1 073	28 015	32 102
2006 Q1	3 309	-72	3 238	2 956	834	4 591	17 334	1 091	26 806	30 044
Q2	3 209	-19	3 190	2 845	910	4 005	18 266	935	26 961	30 151
Q3	3 538	-64	3 474	3 232	850	4 687	18 911	1 057	28 737	32 211
Q4	4 228	-120	4 106	3 431	897	5 191	21 474	932	31 925	36 031
2007 Q1	3 493	-119	3 374	3 588	834	5 149	20 439	940	30 950	34 324
Q2	3 374	2	3 376	3 663	832	4 646	20 656	887	30 684	34 060
Q3	3 531	1	3 532	4 160	972	4 921	21 460	945	32 458	35 990
Q4	4 396	2	4 399	4 293	891	5 963	22 718	1 026	34 891	39 290
2008 Q1	3 202	2	3 204	4 039	887	4 609	21 880	1 056	32 471	35 674
Q2	3 282	1	3 284	4 267	826	4 140	21 912	977	32 122	35 406
Q3	3 558	2	3 560	4 374	769	4 869	21 496	1 045	32 552	36 112
Q4	4 257	2	4 258	4 147	550	5 348	23 039	1 081	34 165	38 425
2009 Q1	3 177	2	3 179	4 037	496	4 192	19 022	1 210	28 956	32 135
Q2	2 521	1	2 522	4 559	479	3 020	16 089	981	25 128	27 649
Q3 <sup>5</sup>	2 466	1	2 467	4 630	517	3 387	16 171	935	25 639	28 106
Percentage change, latest quarter on previous quarter										
2009 Q3	-2.2	-	-2.2	1.6	7.9	12.2	0.5	-4.7	2.0	1.7
Percentage change, latest quarter on corresponding quarter of previous year										
2009 Q3	-30.7	-50.0	-30.7	5.9	-32.8	-30.4	-24.8	-10.5	-21.2	-22.2
Seasonally adjusted										
	INLN	APIE	APIN	IOCR	KWOE	IOYQ	JZKI	APIK	APIT	NPEL
2005 Q3	3 654	-72	3 584	2 612	810	4 654	18 637	1 146	27 864	31 448
Q4	3 597	-71	3 527	2 500	769	4 462	18 178	1 067	26 984	30 512
2006 Q1	3 633	-63	3 570	2 828	887	4 465	17 897	1 015	27 092	30 662
Q2	3 445	-30	3 415	2 925	909	4 568	18 457	987	27 846	31 260
Q3	3 573	-66	3 507	3 196	810	4 676	19 078	1 082	28 842	32 349
Q4	3 633	-116	3 516	3 515	885	4 765	20 554	931	30 649	34 166
2007 Q1	3 834	-106	3 728	3 487	883	5 080	21 163	885	31 498	35 226
Q2	3 618	-13	3 605	3 762	830	5 297	20 947	931	31 767	35 372
Q3	3 581	-5	3 576	4 104	921	4 893	21 571	958	32 447	36 023
Q4	3 761	10	3 772	4 351	895	5 409	21 592	1 024	33 272	37 043
2008 Q1	3 462	11	3 473	3 984	918	4 541	22 226	993	32 662	36 135
Q2	3 646	-15	3 631	4 348	834	4 841	22 732	1 034	33 788	37 419
Q3	3 627	5	3 632	4 306	720	4 856	21 702	1 059	32 644	36 275
Q4	3 564	6	3 570	4 189	560	4 728	21 667	1 073	32 216	35 788
2009 Q1	3 392	12	3 404	4 028	506	4 165	19 364	1 132	29 194	32 598
Q2	2 869	-16	2 853	4 624	484	3 549	16 724	1 045	26 426	29 278
Q3 <sup>5</sup>	2 580	1	2 581	4 538	481	3 416	16 409	968	25 812	28 393
Percentage change, latest quarter on previous quarter										
2009 Q3	-10.1	-106.2	-9.5	-1.9	-0.6	-3.7	-1.9	-7.4	-2.3	-3.0
Percentage change, latest quarter on corresponding quarter of previous year										
2009 Q3	-28.9	-80.0	-28.9	5.4	-33.2	-29.7	-24.4	-8.6	-20.9	-21.7

1 Estimates are shown to the nearest £ million but should not be regarded as accurate to this degree.

2 All figures are exclusive of expenditure on land and existing buildings.

3 All private sector figures are exclusive of expenditure on dwellings.

4 Includes Agricultural Contractors.

5 Provisional figures

6 2005q2 reflects BNFL transfer from public corporations to central government

Source: Office for National Statistics

# 2 Business Investment<sup>2</sup> by Industry at Current Prices

£ million<sup>1</sup>

	Manufacturing			Non-manufacturing				Public Corporations	Total	Total Business Investment
	Private <sup>3</sup> Sector	Public <sup>6</sup> Corporations	Total	Private Sector <sup>3</sup>						
				Other <sup>4</sup> Production	Construction	Distribution Services	Other Services			
2005	14 441	15 447	29 888	10 472	3 000	18 834	71 561	4 229	108 096	137 984
2006	14 366	-348	14 018	12 517	3 523	18 528	75 445	4 114	114 127	128 145
2007	15 092	-115	14 977	15 884	3 575	20 886	83 753	4 022	128 120	143 097
2008	15 057	7	15 064	17 411	3 138	19 560	87 675	4 471	132 255	147 319
Not seasonally adjusted										
	INJJ	APGG	APGZ	IOCP	KWOD	IOYP	JZKF	APGS	APHR	NPEM
2005 Q3	3 646	-72	3 574	2 639	831	4 659	18 416	1 116	27 661	31 235
Q4	4 172	-70	4 102	2 420	799	4 832	18 833	1 088	27 972	32 074
2006 Q1	3 333	-71	3 262	2 980	843	4 606	17 282	1 107	26 818	30 080
Q2	3 233	-37	3 196	2 846	919	4 018	18 178	952	26 913	30 109
Q3	3 552	-121	3 431	3 243	857	4 699	18 765	1 081	28 645	32 076
Q4	4 248	-119	4 129	3 448	904	5 205	21 220	974	31 751	35 880
2007 Q1	3 522	-120	3 402	3 614	843	5 171	20 095	973	30 696	34 098
Q2	3 409	2	3 411	3 709	844	4 687	20 337	940	30 517	33 928
Q3	3 650	1	3 651	4 213	986	4 985	21 102	1 000	32 286	35 937
Q4	4 511	2	4 513	4 348	902	6 043	22 219	1 109	34 621	39 134
2008 Q1	3 316	2	3 318	4 129	908	4 700	21 628	1 147	32 512	35 830
Q2	3 468	1	3 469	4 379	855	4 269	21 781	1 051	32 335	35 804
Q3	3 758	2	3 760	4 598	798	5 036	21 276	1 118	32 826	36 586
Q4	4 515	2	4 517	4 305	577	5 555	22 990	1 155	34 582	39 099
2009 Q1	3 424	2	3 426	4 191	530	4 451	19 374	1 334	29 880	33 306
Q2	2 796	1	2 797	4 804	521	3 220	16 821	1 073	26 439	29 236
Q3 <sup>5</sup>	2 776	1	2 777	4 872	551	3 601	16 755	1 012	26 791	29 568
Percentage change, latest quarter on previous quarter										
2009 Q3	-0.7	-	-0.7	1.4	5.8	11.8	-0.4	-5.7	1.3	1.1
Percentage change, latest quarter on corresponding quarter of previous year										
2009 Q3	-26.1	-50.0	-26.1	6.0	-31.0	-28.5	-21.2	-9.5	-18.4	-19.2
Seasonally adjusted										
	IOBN	APID	APIF	IOBM	IOYV	IOYW	JZKG	APIJ	APIO	NPEK
2005 Q3	3 652	-64	3 588	2 618	811	4 660	18 633	1 150	27 872	31 460
Q4	3 610	-73	3 537	2 509	777	4 478	18 129	1 076	26 969	30 506
2006 Q1	3 656	-65	3 591	2 852	896	4 477	17 795	1 035	27 055	30 646
Q2	3 465	-48	3 417	2 927	916	4 573	18 360	1 001	27 777	31 194
Q3	3 584	-115	3 469	3 204	816	4 690	18 955	1 108	28 773	32 242
Q4	3 661	-120	3 541	3 534	895	4 788	20 335	970	30 522	34 063
2007 Q1	3 860	-111	3 749	3 514	891	5 095	20 746	918	31 164	34 913
Q2	3 653	-14	3 639	3 812	839	5 333	20 596	983	31 563	35 202
Q3	3 700	5	3 705	4 147	935	4 959	21 286	1 015	32 342	36 047
Q4	3 879	5	3 884	4 411	910	5 499	21 125	1 106	33 051	36 935
2008 Q1	3 591	11	3 602	4 076	938	4 623	21 971	1 074	32 682	36 284
Q2	3 835	-15	3 820	4 460	860	4 986	22 529	1 113	33 948	37 768
Q3	3 834	5	3 839	4 520	749	5 026	21 469	1 139	32 903	36 742
Q4	3 797	6	3 803	4 355	591	4 925	21 706	1 145	32 722	36 525
2009 Q1	3 663	12	3 675	4 184	542	4 413	19 750	1 242	30 131	33 806
Q2	3 168	-16	3 152	4 871	525	3 779	17 405	1 145	27 725	30 877
Q3 <sup>5</sup>	2 901	-	2 901	4 760	515	3 641	17 099	1 049	27 064	29 965
Percentage change, latest quarter on previous quarter										
2009 Q3	-8.4	-100.0	-8.0	-2.3	-1.9	-3.7	-1.8	-8.4	-2.4	-3.0
Percentage change, latest quarter on corresponding quarter of previous year										
2009 Q3	-24.3	-100.0	-24.4	5.3	-31.2	-27.6	-20.4	-7.9	-17.7	-18.4

1 Estimates are shown to the nearest £ million but should not be regarded as accurate to this degree.

2 All figures are exclusive of expenditure on land and existing buildings.

3 All private sector figures are exclusive of expenditure on dwellings.

4 Includes Agricultural Contractors.

5 Provisional figures

6 2005q2 figure reflects BNFL transfer from public corporations to central government

Source: Office for National Statistics

# 3 Private Sector<sup>3</sup> Manufacturing Business Investment<sup>2</sup> by Industry

## Chained volume measures

Reference year 2005, £ million<sup>1</sup>

	Analysis by industry group							Total
	Solid & nuclear fuels, oil refining	Metals & metal goods	Chemicals and man made fibres	Engineering and vehicles	Food, drink and tobacco	Textiles, clothing, leather and footwear	Other manufacturing	
2005	345	1 026	2 955	4 432	1 957	163	3 563	14 441
2006	389	1 112	3 182	4 510	1 909	150	3 032	14 283
2007	267	1 172	3 439	4 606	2 060	177	3 073	14 795
2008	382	1 180	3 102	4 628	1 866	209	2 932	14 299
Not seasonally adjusted								
	INJX	INKA	INJY	INJO	INJT	INJU	JZKL	INKL
2005 Q3	81	248	723	1 119	509	36	931	3 647
Q4	120	341	863	1 249	552	35	998	4 158
2006 Q1	96	260	690	1 103	434	36	690	3 309
Q2	102	294	671	914	478	44	706	3 209
Q3	96	266	781	1 139	459	26	771	3 538
Q4	95	292	1 040	1 354	538	44	865	4 228
2007 Q1	49	308	764	1 157	473	36	706	3 493
Q2	66	228	799	1 006	578	31	666	3 374
Q3	41	289	864	1 033	479	48	777	3 531
Q4	111	347	1 012	1 410	530	62	924	4 396
2008 Q1	82	295	619	996	428	53	729	3 202
Q2	83	289	775	884	486	49	717	3 282
Q3	97	272	792	1 136	456	56	749	3 558
Q4	120	324	916	1 612	496	51	737	4 257
2009 Q1	49	252	674	1 301	337	37	527	3 177
Q2	51	190	580	841	314	33	512	2 521
Q3 <sup>4</sup>	52	160	571	875	309	32	467	2 466
Percentage change, latest quarter on previous quarter								
2009 Q3	2.0	-15.8	-1.6	4.0	-1.6	-3.0	-8.8	-2.2
Percentage change, latest quarter on corresponding quarter of previous year								
2009 Q3	-46.4	-41.2	-27.9	-23.0	-32.2	-42.9	-37.7	-30.7
Seasonally adjusted								
	INKZ	INLC	INLA	INKQ	INKV	INKW	JZKM	INLN
2005 Q3	82	250	728	1 135	504	36	919	3 654
Q4	90	293	724	1 052	510	35	894	3 597
2006 Q1	113	292	778	1 188	481	36	745	3 633
Q2	112	304	740	1 012	477	44	756	3 445
Q3	94	267	790	1 175	458	26	763	3 573
Q4	70	249	874	1 134	493	44	768	3 633
2007 Q1	60	341	866	1 233	528	36	770	3 834
Q2	77	235	872	1 119	570	31	715	3 618
Q3	45	295	863	1 076	479	48	775	3 581
Q4	85	301	838	1 178	483	62	813	3 761
2008 Q1	101	311	690	1 036	476	53	794	3 462
Q2	95	313	866	1 071	483	49	768	3 646
Q3	98	278	791	1 210	464	56	729	3 627
Q4	88	278	755	1 311	443	51	641	3 564
2009 Q1	58	259	756	1 340	375	37	566	3 392
Q2	57	207	651	1 065	313	33	542	2 869
Q3 <sup>4</sup>	52	169	584	973	314	32	455	2 580
Percentage change, latest quarter on previous quarter								
2009 Q3	-8.8	-18.4	-10.3	-8.6	0.3	-3.0	-16.1	-10.1
Percentage change, latest quarter on corresponding quarter of previous year								
2009 Q3	-46.9	-39.2	-26.2	-19.6	-32.3	-42.9	-37.6	-28.9

1 Estimates are shown to the nearest £ million but should not be regarded as accurate to this degree.

2 All figures are exclusive of expenditure on land and existing buildings.

3 All private sector figures are exclusive of expenditure on dwellings.

4 Provisional figures

Source: Office for National Statistics

# 4 Private Sector<sup>3</sup> Manufacturing Business Investment<sup>2</sup> by Industry at Current Prices

£ million<sup>1</sup>

	Analysis by industry group							Total
	Solid & nuclear fuels, oil refining	Metals & metal goods	Chemicals and man made fibres	Engineering and vehicles	Food, drink and tobacco	Textiles, clothing, leather and footwear	Other manufacturing	
2005	345	1 026	2 955	4 432	1 957	163	3 563	14 441
2006	394	1 130	3 184	4 525	1 930	153	3 050	14 366
2007	270	1 192	3 450	4 637	2 239	182	3 122	15 092
2008	401	1 223	3 186	4 752	2 235	213	3 047	15 057
Not seasonally adjusted								
	INIV	INIV	INIW	INIM	INIR	INIS	JZKJ	INJJ
2005 Q3	81	250	720	1 117	511	36	931	3 646
Q4	119	343	864	1 252	558	35	1 001	4 172
2006 Q1	96	264	692	1 111	440	36	694	3 333
Q2	103	298	671	920	484	46	711	3 233
Q3	98	271	780	1 141	464	26	772	3 552
Q4	97	297	1 041	1 353	542	45	873	4 248
2007 Q1	48	314	765	1 167	478	37	713	3 522
Q2	66	231	802	1 015	586	31	678	3 409
Q3	41	293	869	1 043	561	49	794	3 650
Q4	115	354	1 014	1 412	614	65	937	4 511
2008 Q1	83	301	626	1 009	498	54	745	3 316
Q2	87	300	794	907	585	51	744	3 468
Q3	101	282	814	1 171	550	58	782	3 758
Q4	130	340	952	1 665	602	50	776	4 515
2009 Q1	51	271	722	1 350	420	39	571	3 424
Q2	54	205	631	907	399	36	564	2 796
Q3 <sup>4</sup>	56	174	619	942	437	35	513	2 776
Percentage change, latest quarter on previous quarter								
2009 Q3	3.7	-15.1	-1.9	3.9	9.5	-2.8	-9.0	-0.7
Percentage change, latest quarter on corresponding quarter of previous year								
2009 Q3	-44.6	-38.3	-24.0	-19.6	-20.5	-39.7	-34.4	-26.1
Seasonally adjusted								
	IOAZ	IOBC	IOBA	IOAQ	IOAV	IOAW	JZKK	IOBN
2005 Q3	82	251	725	1 132	505	36	921	3 652
Q4	89	295	725	1 055	514	35	897	3 610
2006 Q1	114	296	779	1 195	489	36	747	3 656
Q2	113	310	740	1 012	482	46	762	3 465
Q3	96	271	790	1 176	461	26	764	3 584
Q4	71	253	875	1 142	498	45	777	3 661
2007 Q1	59	347	863	1 243	538	37	773	3 860
Q2	77	239	875	1 124	578	31	729	3 653
Q3	45	299	869	1 085	561	49	792	3 700
Q4	89	307	843	1 185	562	65	828	3 879
2008 Q1	103	317	696	1 051	560	54	810	3 591
Q2	100	324	888	1 096	578	51	798	3 835
Q3	104	289	815	1 246	558	58	764	3 834
Q4	94	293	787	1 359	539	50	675	3 797
2009 Q1	61	278	808	1 392	473	39	612	3 663
Q2	61	224	709	1 147	394	36	597	3 168
Q3 <sup>4</sup>	57	185	636	1 044	443	35	501	2 901
Percentage change, latest quarter on previous quarter								
2009 Q3	-6.6	-17.4	-10.3	-9.0	12.4	-2.8	-16.1	-8.4
Percentage change, latest quarter on corresponding quarter of previous year								
2009 Q3	-45.2	-36.0	-22.0	-16.2	-20.6	-39.7	-34.4	-24.3

1 Estimates are shown to the nearest £ million but should not be regarded as accurate to this degree.

2 All figures are exclusive of expenditure on land and existing buildings.

3 All private sector figures are exclusive of expenditure on dwellings.

4 Provisional figures

Source: Office for National Statistics

# 5 Private Sector<sup>3</sup> Manufacturing Business Investment<sup>2</sup> by Asset

£ million<sup>1</sup>

	Chained volume measures, reference year 2005				Current prices			
	Analysis by asset			Total All manu- facturing	Analysis by asset			Total All manu- facturing
	New Building Work	Vehicles	Other Capital Equipment		New Building Work	Vehicles	Other Capital Equipment	
2005	1 700	583	12 158	14 441	1 700	583	12 158	14 441
2006	1 646	425	12 213	14 283	1 654	429	12 283	14 366
2007	1 941	451	12 402	14 795	1 953	453	12 686	15 092
2008	2 389	536	11 374	14 299	2 393	551	12 113	15 057
Not seasonally adjusted								
	IMGV	IMSG	INDR	INKL	IMDA	IMOL	IMZW	INJJ
2005 Q3	495	122	3 030	3 647	496	123	3 027	3 646
Q4	477	127	3 554	4 158	476	127	3 569	4 172
2006 Q1	402	86	2 821	3 309	402	88	2 843	3 333
Q2	362	91	2 756	3 209	366	92	2 775	3 233
Q3	395	134	3 009	3 538	395	135	3 022	3 552
Q4	487	114	3 627	4 228	491	114	3 643	4 248
2007 Q1	401	120	2 972	3 493	404	120	2 998	3 522
Q2	469	104	2 801	3 374	472	102	2 835	3 409
Q3	453	92	2 986	3 531	455	95	3 100	3 650
Q4	618	135	3 643	4 396	622	136	3 753	4 511
2008 Q1	408	112	2 682	3 202	408	112	2 796	3 316
Q2	444	116	2 722	3 282	444	117	2 907	3 468
Q3	706	163	2 689	3 558	709	169	2 880	3 758
Q4	831	145	3 281	4 257	832	153	3 530	4 515
2009 Q1	840	59	2 278	3 177	836	63	2 525	3 424
Q2	385	49	2 087	2 521	385	57	2 354	2 796
Q3 <sup>4</sup>	325	53	2 088	2 466	325	57	2 394	2 776
Percentage change, latest quarter on previous quarter								
2009 Q3	-15.6	8.2	-	-2.2	-15.6	-	1.7	-0.7
Percentage change, latest quarter on corresponding quarter of previous year								
2009 Q3	-54.0	-67.5	-22.4	-30.7	-54.2	-66.3	-16.9	-26.1
Seasonally adjusted								
	IMKQ	IMWB	INHM	INLN	INSA	INVV	INZQ	IOBN
2005 Q3	482	114	3 058	3 654	489	115	3 048	3 652
Q4	430	121	3 046	3 597	421	122	3 067	3 610
2006 Q1	426	91	3 116	3 633	446	92	3 118	3 656
Q2	394	98	2 953	3 445	387	100	2 978	3 465
Q3	383	129	3 061	3 573	389	129	3 066	3 584
Q4	443	107	3 083	3 633	432	108	3 121	3 661
2007 Q1	420	130	3 284	3 834	447	129	3 284	3 860
Q2	512	112	2 994	3 618	504	111	3 038	3 653
Q3	449	87	3 045	3 581	451	89	3 160	3 700
Q4	560	122	3 079	3 761	551	124	3 204	3 879
2008 Q1	441	123	2 898	3 462	466	124	3 001	3 591
Q2	525	129	2 992	3 646	503	131	3 201	3 835
Q3	719	154	2 754	3 627	713	159	2 962	3 834
Q4	704	130	2 730	3 564	711	137	2 949	3 797
2009 Q1	917	66	2 409	3 392	950	71	2 642	3 663
Q2	484	56	2 329	2 869	451	65	2 652	3 168
Q3 <sup>4</sup>	362	50	2 168	2 580	349	55	2 497	2 901
Percentage change, latest quarter on previous quarter								
2009 Q3	-25.2	-10.7	-6.9	-10.1	-22.6	-15.4	-5.8	-8.4
Percentage change, latest quarter on corresponding quarter of previous year								
2009 Q3	-49.7	-67.5	-21.3	-28.9	-51.1	-65.4	-15.7	-24.3

1 Estimates are shown to the nearest £ million but should not be regarded as accurate to this degree.

2 All figures are exclusive of expenditure on land and existing buildings.

3 All private sector figures are exclusive of expenditure on dwellings.

4 Provisional figures

Source: Office for National Statistics

# 6 Private Sector<sup>3</sup> Non Manufacturing Business Investment<sup>2</sup> by Industry Within Other Production and Other Services

£ million<sup>1</sup>

Chained volume measures, reference year 2005

	Other Production <sup>4</sup>					Other Services							
	Electricity, gas and water	Agriculture and forestry	Fishing	Mining and quarrying	Total	Hotels and restaurants	Financial Intermediation	Transport and communication	Real estate, renting and business	Education	Health and social work	Other services	Total
2005	3 344	2 892	4	4 232	10 472	5 975	8 267	19 983	17 893	2 788	857	15 798	71 561
2006	4 833	2 915	4	4 712	12 464	6 187	8 482	21 497	20 084	2 993	1 051	15 691	75 985
2007	6 884	3 006	4	5 810	15 704	6 943	9 641	22 394	24 951	3 368	1 410	16 566	85 273
2008	8 177	3 363	4	5 283	16 827	7 251	10 272	25 178	22 521	3 752	1 646	17 707	88 327
Not seasonally adjusted													
	INKG	YGPO	YGPP	YGPQ	IOCQ	DBQS	YGNX	YGQG	YGQI	YGQK	YGQL	YGQM	JZKH
2005 Q3	818	735	1	1 077	2 631	1 615	1 863	4 852	4 597	730	202	4 554	18 413
Q4	875	560	1	977	2 413	1 542	2 297	4 981	4 747	717	210	4 425	18 919
2006 Q1	1 190	815	1	950	2 956	1 497	2 059	4 970	4 552	624	199	3 433	17 334
Q2	1 047	709	1	1 088	2 845	1 502	1 826	5 592	4 629	733	268	3 716	18 266
Q3	1 280	695	1	1 256	3 232	1 421	2 158	5 156	5 225	885	268	3 798	18 911
Q4	1 316	696	1	1 418	3 431	1 767	2 439	5 779	5 678	751	316	4 744	21 474
2007 Q1	1 454	791	1	1 342	3 588	1 730	2 488	5 303	5 806	710	315	4 087	20 439
Q2	1 565	740	1	1 357	3 663	1 677	2 055	5 647	6 088	804	266	4 119	20 656
Q3	1 835	757	1	1 567	4 160	1 806	2 195	5 467	6 569	993	383	4 047	21 460
Q4	2 030	718	1	1 544	4 293	1 730	2 903	5 977	6 488	861	446	4 313	22 718
2008 Q1	1 946	933	1	1 158	4 039	1 808	2 371	5 686	6 072	779	417	4 749	21 880
Q2	2 034	840	1	1 392	4 267	1 900	2 629	6 270	5 827	878	410	3 999	21 912
Q3	2 139	896	1	1 338	4 374	1 650	2 308	6 180	5 481	1 123	450	4 305	21 496
Q4	2 058	694	1	1 395	4 147	1 893	2 964	7 042	5 141	972	369	4 654	23 039
2009 Q1	1 992	666	1	1 378	4 037	1 445	2 241	5 622	4 173	1 000	344	4 198	19 022
Q2	2 174	648	1	1 736	4 559	1 329	1 344	5 417	3 549	1 007	352	3 093	16 089
Q3 <sup>5</sup>	2 361	651	1	1 616	4 630	1 027	1 765	5 526	3 119	1 111	341	3 283	16 171
Percentage change, latest quarter on previous quarter													
2009 Q3	8.6	0.5	-	-6.9	1.6	-22.7	31.3	2.0	-12.1	10.3	-3.1	6.1	0.5
Percentage change, latest quarter on corresponding quarter of previous year													
2009 Q3	10.4	-27.3	-	20.8	5.9	-37.8	-23.5	-10.6	-43.1	-1.1	-24.2	-23.7	-24.8
Seasonally adjusted													
	INLI	YHDH	YHDJ	YHDL	IOCR	YGRP	YHAR	YHFU	YHfy	YHGC	YHGE	YHGG	JZKI
2005 Q3	781	751	1	1 079	2 612	1 658	1 953	5 063	4 530	647	196	4 590	18 637
Q4	858	677	1	964	2 500	1 507	2 014	4 897	4 660	698	200	4 202	18 178
2006 Q1	1 159	714	1	954	2 828	1 503	2 238	5 051	4 704	711	200	3 490	17 897
Q2	1 133	698	1	1 093	2 925	1 499	1 833	5 473	4 667	752	292	3 941	18 457
Q3	1 239	697	1	1 259	3 196	1 464	2 276	5 360	5 127	778	258	3 815	19 078
Q4	1 302	806	1	1 406	3 515	1 721	2 135	5 613	5 586	753	301	4 445	20 554
2007 Q1	1 429	708	1	1 349	3 487	1 739	2 689	5 470	5 975	803	321	4 166	21 163
Q2	1 661	738	1	1 362	3 762	1 669	2 086	5 532	6 183	827	296	4 354	20 947
Q3	1 785	748	1	1 570	4 104	1 858	2 332	5 679	6 414	860	372	4 056	21 571
Q4	2 009	812	1	1 529	4 351	1 677	2 534	5 713	6 379	878	421	3 990	21 592
2008 Q1	1 955	858	1	1 170	3 984	1 812	2 326	5 942	6 195	865	426	4 660	22 226
Q2	2 103	852	1	1 392	4 348	1 916	2 888	6 272	5 974	918	443	4 321	22 732
Q3	2 094	876	1	1 336	4 306	1 693	2 483	6 407	5 367	968	433	4 351	21 702
Q4	2 025	777	1	1 385	4 189	1 830	2 575	6 557	4 985	1 001	344	4 375	21 667
2009 Q1	2 018	628	1	1 380	4 028	1 454	2 182	5 924	4 250	1 096	349	4 109	19 364
Q2	2 229	660	1	1 734	4 624	1 344	1 480	5 459	3 648	1 060	380	3 353	16 724
Q3 <sup>5</sup>	2 291	632	1	1 614	4 538	1 099	1 881	5 714	3 072	979	327	3 337	16 409
Percentage change, latest quarter on previous quarter													
2009 Q3	2.8	-4.2	-	-6.9	-1.9	-18.2	27.1	4.7	-15.8	-7.6	-13.9	-0.5	-1.9
Percentage change, latest quarter on corresponding quarter of previous year													
2009 Q3	9.4	-27.9	-	20.8	5.4	-35.1	-24.2	-10.8	-42.8	1.1	-24.5	-23.3	-24.4

1 Estimates are shown to the nearest £ million but should not be regarded as accurate to this degree.

2 All figures are exclusive of expenditure on land and existing buildings.

3 All private sector figures are exclusive of expenditure on dwellings.

4 Includes Agricultural contractors.

5 Provisional figures

Source: Office for National Statistics

# 7 Private Sector<sup>3</sup> Non Manufacturing Business Investment<sup>2</sup> by Industry Within Other Production and Other Services

£ million<sup>1</sup>

	Current prices												
	Other Production <sup>4</sup>					Other Services							
	Electricity, gas and water	Agriculture and forestry	Fishing	Mining and quarrying	Total	Hotels and restaurants	Financial Intermediation	Transport and communication	Real estate, renting and business	Education	Health and social work	Other services	Total
2005	3 344	2 892	4	4 232	10 472	5 975	8 267	19 983	17 893	2 788	857	15 798	71 561
2006	4 810	2 945	4	4 758	12 517	6 198	8 325	21 454	19 871	3 019	1 050	15 528	75 445
2007	6 817	3 135	4	5 928	15 884	7 013	9 279	22 165	24 226	3 421	1 407	16 242	83 753
2008	8 254	3 637	4	5 516	17 411	7 500	9 852	25 240	22 121	3 868	1 671	17 423	87 675
Not seasonally adjusted													
	INJE	YGOH	YGOI	YGOJ	IOCP	DFPP	YGNQ	YGOZ	YGPB	YGPD	YGPE	YGPF	JZKF
2005 Q3	812	742	1	1 084	2 639	1 614	1 872	4 849	4 609	724	203	4 545	18 416
Q4	872	566	1	981	2 420	1 544	2 265	4 955	4 745	709	209	4 406	18 833
2006 Q1	1 205	823	1	951	2 980	1 501	2 036	4 957	4 536	631	199	3 422	17 282
Q2	1 031	715	1	1 099	2 846	1 507	1 792	5 593	4 590	739	268	3 689	18 178
Q3	1 271	702	1	1 269	3 243	1 421	2 118	5 154	5 167	885	267	3 753	18 765
Q4	1 303	705	1	1 439	3 448	1 769	2 379	5 750	5 578	764	316	4 664	21 220
2007 Q1	1 447	805	1	1 361	3 614	1 729	2 399	5 266	5 655	715	313	4 018	20 095
Q2	1 550	775	1	1 383	3 709	1 696	1 991	5 626	5 906	818	266	4 034	20 337
Q3	1 817	794	1	1 601	4 213	1 832	2 121	5 421	6 369	1 005	382	3 972	21 102
Q4	2 003	761	1	1 583	4 348	1 756	2 768	5 852	6 296	883	446	4 218	22 219
2008 Q1	1 940	994	1	1 194	4 129	1 847	2 296	5 620	5 966	812	418	4 669	21 628
Q2	2 035	904	1	1 439	4 379	1 954	2 516	6 304	5 736	913	414	3 944	21 781
Q3	2 216	965	1	1 416	4 598	1 714	2 202	6 185	5 356	1 134	458	4 227	21 276
Q4	2 063	774	1	1 467	4 305	1 985	2 838	7 131	5 063	1 009	381	4 583	22 990
2009 Q1	1 978	757	1	1 455	4 191	1 539	2 211	5 815	4 201	1 039	359	4 210	19 374
Q2	2 213	755	1	1 835	4 804	1 423	1 401	5 787	3 633	1 039	367	3 171	16 821
Q3 <sup>5</sup>	2 402	762	1	1 707	4 872	1 108	1 784	5 852	3 178	1 133	353	3 347	16 755
Percentage change, latest quarter on previous quarter													
2009 Q3	8.5	0.9	-	-7.0	1.4	-22.1	27.3	1.1	-12.5	9.0	-3.8	5.6	-0.4
Percentage change, latest quarter on corresponding quarter of previous year													
2009 Q3	8.4	-21.0	-	20.6	6.0	-35.4	-19.0	-5.4	-40.7	-0.1	-22.9	-20.8	-21.2
Seasonally adjusted													
	IOBI	YHDG	YHDI	YHEA	IOBM	YGRJ	YHAQ	YHFT	YHFX	YHGB	YHGD	YHGF	JZKG
2005 Q3	776	755	1	1 086	2 618	1 666	1 961	5 058	4 537	647	198	4 566	18 633
Q4	858	682	1	968	2 509	1 499	1 983	4 884	4 649	696	201	4 217	18 129
2006 Q1	1 171	724	1	956	2 852	1 509	2 197	5 039	4 695	713	204	3 438	17 795
Q2	1 120	703	1	1 103	2 927	1 504	1 809	5 454	4 632	758	282	3 921	18 360
Q3	1 227	705	1	1 271	3 204	1 474	2 236	5 355	5 083	784	259	3 764	18 955
Q4	1 292	813	1	1 428	3 534	1 711	2 083	5 606	5 461	764	305	4 405	20 335
2007 Q1	1 420	725	1	1 368	3 514	1 739	2 574	5 430	5 834	806	323	4 040	20 746
Q2	1 653	770	1	1 388	3 812	1 687	2 031	5 484	5 994	839	283	4 278	20 596
Q3	1 757	786	1	1 603	4 147	1 899	2 255	5 630	6 264	880	371	3 987	21 286
Q4	1 987	854	1	1 569	4 411	1 688	2 419	5 621	6 134	896	430	3 937	21 125
2008 Q1	1 953	915	1	1 207	4 076	1 853	2 288	5 870	6 059	896	431	4 574	21 971
Q2	2 110	911	1	1 438	4 460	1 969	2 772	6 268	5 881	949	438	4 252	22 529
Q3	2 158	948	1	1 413	4 520	1 761	2 352	6 394	5 263	988	438	4 273	21 469
Q4	2 033	863	1	1 458	4 355	1 917	2 440	6 708	4 918	1 035	364	4 324	21 706
2009 Q1	2 011	714	1	1 458	4 184	1 550	2 202	6 124	4 260	1 130	370	4 114	19 750
Q2	2 274	764	1	1 832	4 871	1 438	1 547	5 788	3 730	1 087	389	3 426	17 405
Q3 <sup>5</sup>	2 312	742	1	1 705	4 760	1 186	1 912	6 052	3 154	1 011	342	3 442	17 099
Percentage change, latest quarter on previous quarter													
2009 Q3	1.7	-2.9	-	-6.9	-2.3	-17.5	23.6	4.6	-15.4	-7.0	-12.1	0.5	-1.8
Percentage change, latest quarter on corresponding quarter of previous year													
2009 Q3	7.1	-21.7	-	20.7	5.3	-32.7	-18.7	-5.3	-40.1	2.3	-21.9	-19.4	-20.4

1 Estimates are shown to the nearest £ million but should not be regarded as accurate to this degree.

2 All figures are exclusive of expenditure on land and existing buildings.

3 All private sector figures are exclusive of expenditure on dwellings.

4 Includes Agricultural contractors.

5 Provisional figures

Source: Office for National Statistics

---

**Next publication:** Friday 18 December 2009

**Issued by:** Office for National Statistics, Government Buildings, Cardiff Road, Newport NP10 8XG

**Media contact:**

Tel        **Media Relations Office 0845 6041858**

**Emergency on-call 07867 906553**

E-mail    **press.office@ons.gsi.gov.uk**

**Statistical contact:**

Tel        **Bruce Omundsen 01633 456 406**

E-mail    **bruce.omundsen@ons.gov.uk**

**Website:**

[www.ons.gov.uk](http://www.ons.gov.uk)